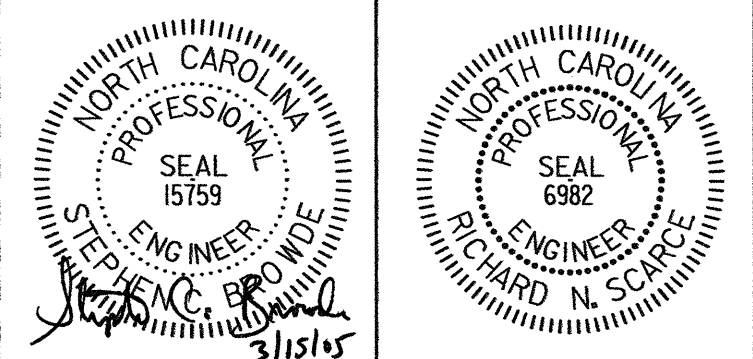


CONST. REV.
R/W REV.

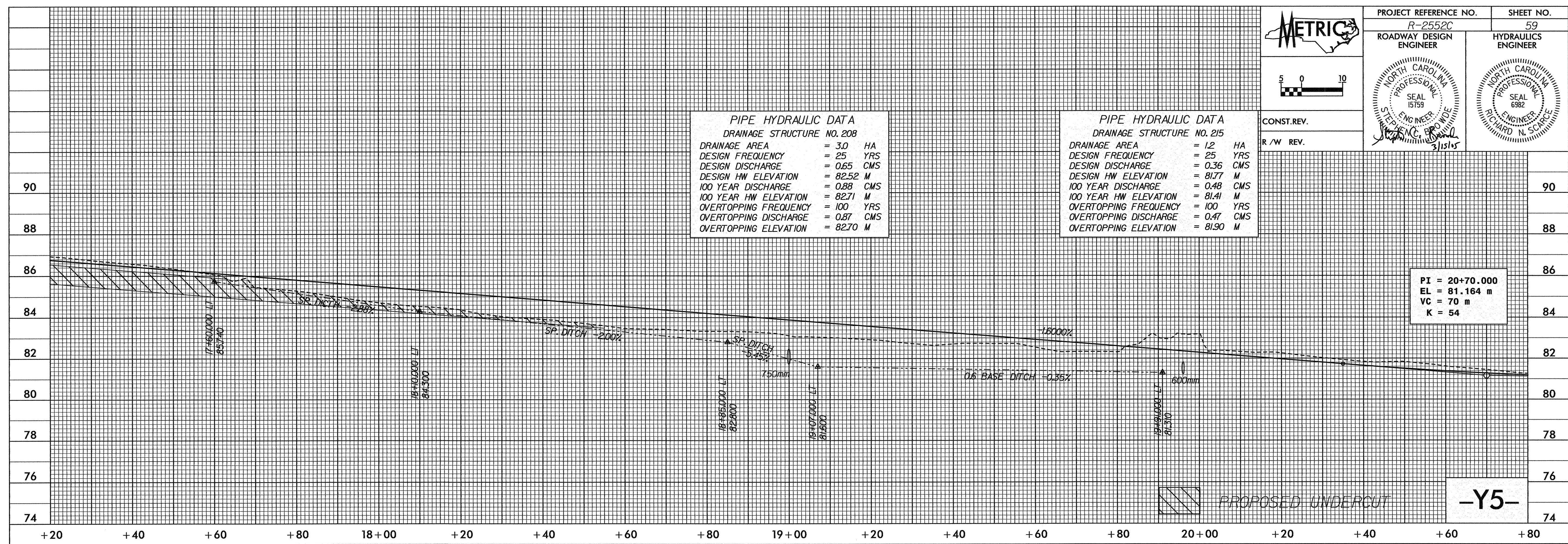


PIPE HYDRAULIC DATA
DRAINAGE STRUCTURE NO. 208

DRAINAGE AREA	= 3.0	HA
DESIGN FREQUENCY	= 25	YRS
DESIGN DISCHARGE	= 0.65	CMS
DESIGN HW ELEVATION	= 82.52	M
100 YEAR DISCHARGE	= 0.88	CMS
100 YEAR HW ELEVATION	= 82.71	M
OVERTOPPING FREQUENCY	= 100	YRS
OVERTOPPING DISCHARGE	= 0.87	CMS
OVERTOPPING ELEVATION	= 82.70	M

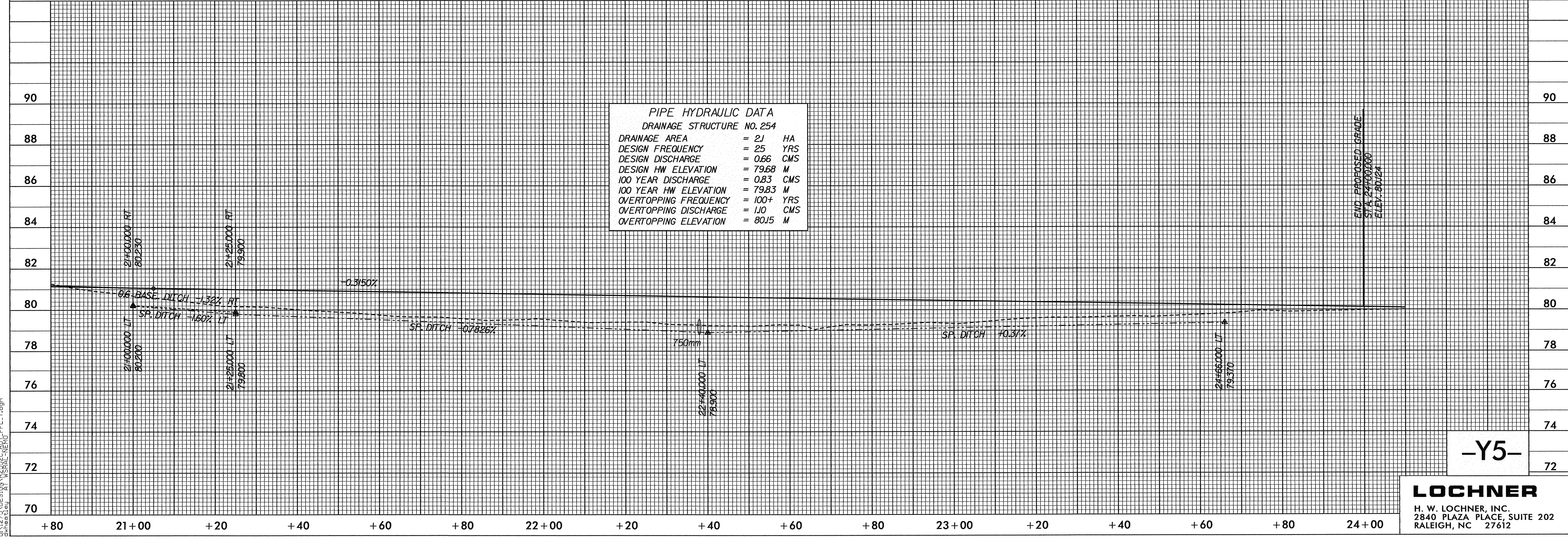
PIPE HYDRAULIC DATA
DRAINAGE STRUCTURE NO. 215

DRAINAGE AREA	= 1.2	HA
DESIGN FREQUENCY	= 25	YRS
DESIGN DISCHARGE	= 0.36	CMS
DESIGN HW ELEVATION	= 81.77	M
100 YEAR DISCHARGE	= 0.48	CMS
100 YEAR HW ELEVATION	= 81.41	M
OVERTOPPING FREQUENCY	= 100	YRS
OVERTOPPING DISCHARGE	= 0.47	CMS
OVERTOPPING ELEVATION	= 81.90	M



PIPE HYDRAULIC DATA
DRAINAGE STRUCTURE NO. 254

DRAINAGE AREA	= 2.1	HA
DESIGN FREQUENCY	= 25	YRS
DESIGN DISCHARGE	= 0.66	CMS
DESIGN HW ELEVATION	= 79.68	M
100 YEAR DISCHARGE	= 0.83	CMS
100 YEAR HW ELEVATION	= 79.83	M
OVERTOPPING FREQUENCY	= 100+	YRS
OVERTOPPING DISCHARGE	= 1.10	CMS
OVERTOPPING ELEVATION	= 80.15	M



IT-MAR-2005 P252
J:\275\DESIGN\2552C\RD\PF_L_Y.dgn
3/15/05