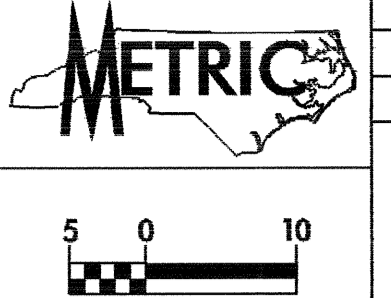


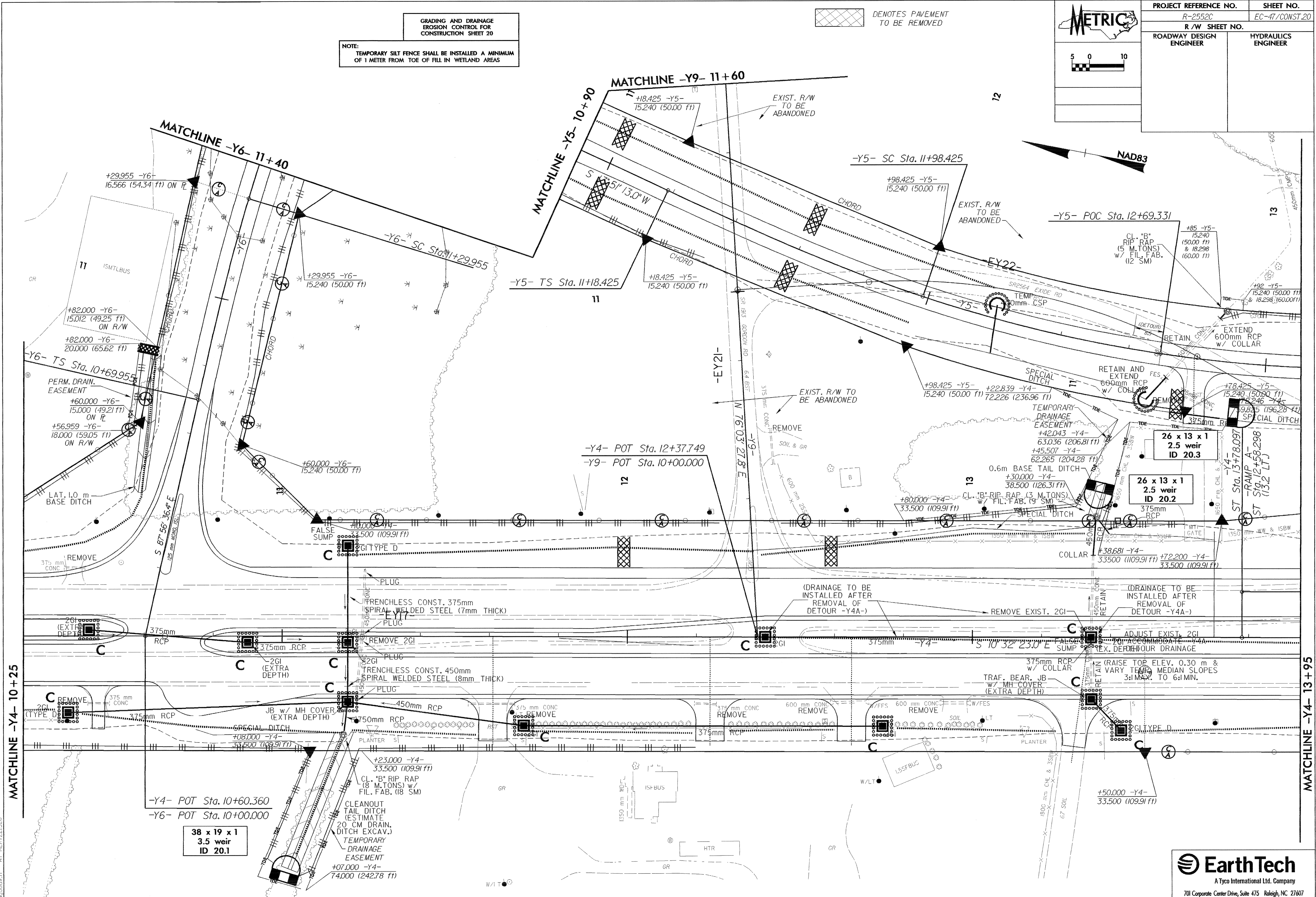
GRADING AND DRAINAGE
EROSION CONTROL FOR
CONSTRUCTION SHEET 20

NOTE:
TEMPORARY SILT FENCE SHALL BE INSTALLED A MINIMUM
OF 1 METER FROM TOE OF FILL IN WETLAND AREAS

 DENOTES PAVEMENT
TO BE REMOVED



PROJECT REFERENCE NO.	R-2552C	SHEET NO.	EC-47/CONST.20
R/W SHEET NO.		ROADWAY DESIGN ENGINEER	HYDRAULICS ENGINEER



6-FEB-2005 09:00
d:\PROJECTS\2552C\2552C.dwg
PROJECT: R-2552C-47/CONST.20.DGN
DRAWN BY: J. [unreadable]