

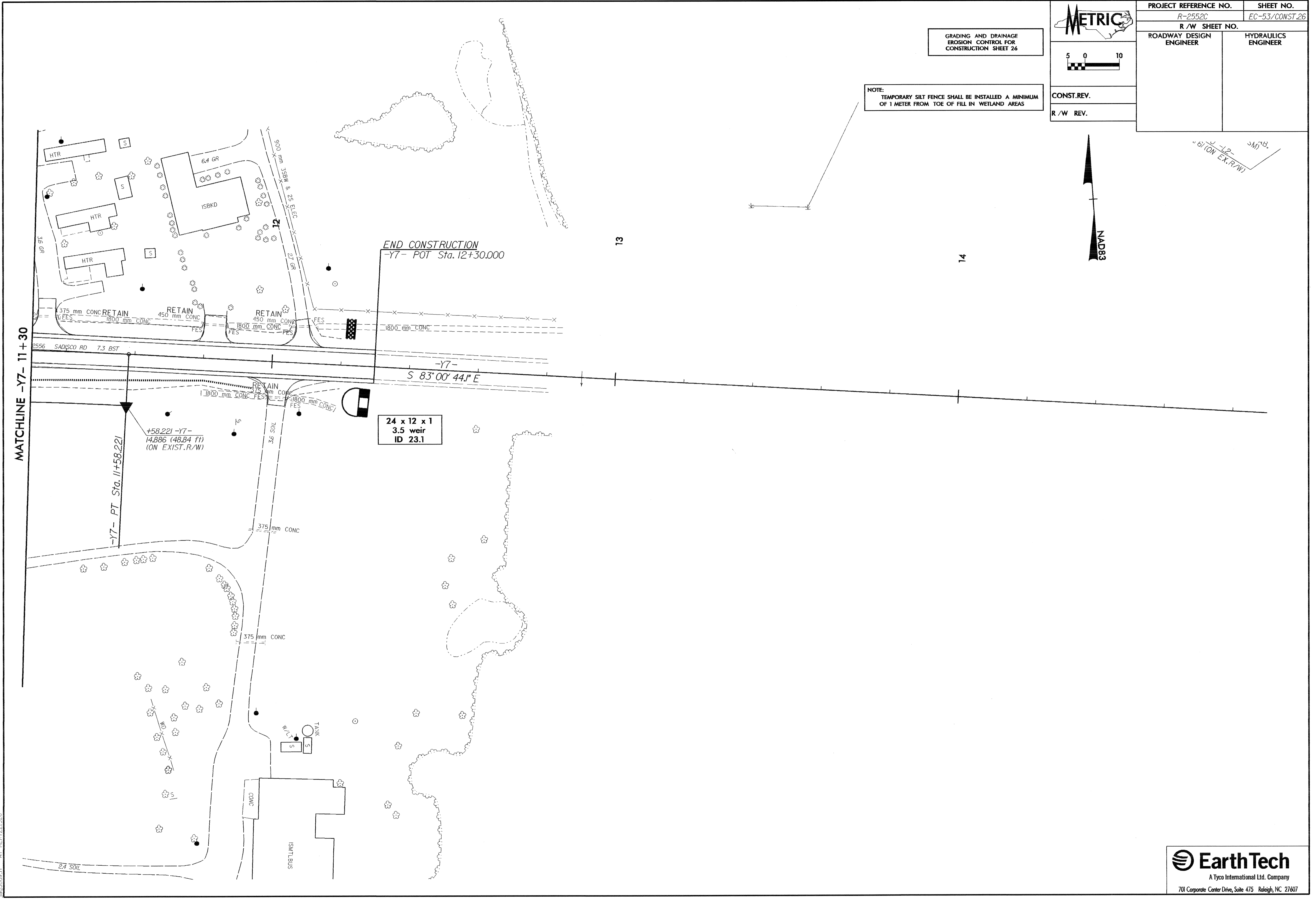
PROJECT REFERENCE NO. R-2552C	SHEET NO. EC-53/CONST.26
R/W SHEET NO.	
ROADWAY DESIGN ENGINEER	HYDRAULICS ENGINEER
CONST. REV.	
R/W REV.	

GRADING AND DRAINAGE
EROSION CONTROL FOR
CONSTRUCTION SHEET 26

NOTE:
TEMPORARY SILT FENCE SHALL BE INSTALLED A MINIMUM
OF 1 METER FROM TOE OF FILL IN WETLAND AREAS



1/2" = 1' (ON EX. R/W)



6-FEB-2005 11:41 AM
 d:\projects\2552c\ec\53\const\26\26.dgn
 User: jk
 Plot: REVISIONS