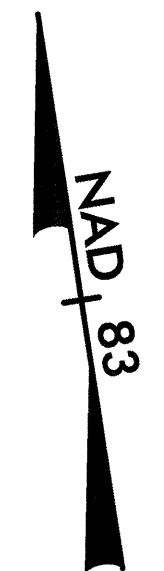


ALL WATER AND SEWER LINES OWNED BY JOHNSTON COUNTY



ESTIMATED 1999/2025 ADT  
SR 1554  
TTST- 1% (CORBETT RD.)  
DUAL- 1% 1.500  
3.200

TTST- 10%  
DUAL- 6%  
27.700  
68.800

NC 70 BYPA  
(CLAYTON BY)

PROP. 110M OF 200MM PVC WATER PIPE,  
SDR 21, 1.38MPA WP  
2 - 200MM 22 1/2° DI BENDS  
2 - 200MM 45° DI BENDS  
CONNECT USING NECESSARY FITTINGS

-Y7-DET PI= 12+40.574 Δ= 26° 27' 40.7" (RT) L= 115.459 T= 58.778 R= 250.000 SE= 0.060	-Y7-DET PI= 14+43.027 Δ= 33° 11' 39.3" (LT) L= 144.837 T= 74.515 R= 250.000 SE= 0.060	-DR-3 PI= 10+50.286 Δ= 53° 23' 32.4" (RT) L= 93.187 T= 50.286 R= 100.000	-Y7- PI= 12+04.373 Δ= 18° 50' 36.6" (RT) L= 174.307 T= 87.948 R= 530.000 SE= 0.060	-Y7- PI= 15+28.255 Δ= 4° 24' 12.3" (LT) L= 134.495 T= 67.281 R= 1,750.000 SE= 0.030
---	---	---	--	---

PROP. 113M OF 250MM HDPE WATER PIPE,  
DR 9, 1.38MPA WP  
BY TRENCHLESS METHOD  
CONNECT USING NECESSARY FITTINGS

SEE PROFILE WL1 SHEET UC-11

PROP. INV. = 91.09  
28.48M LT. OF -L-  
STA. 65+34.23

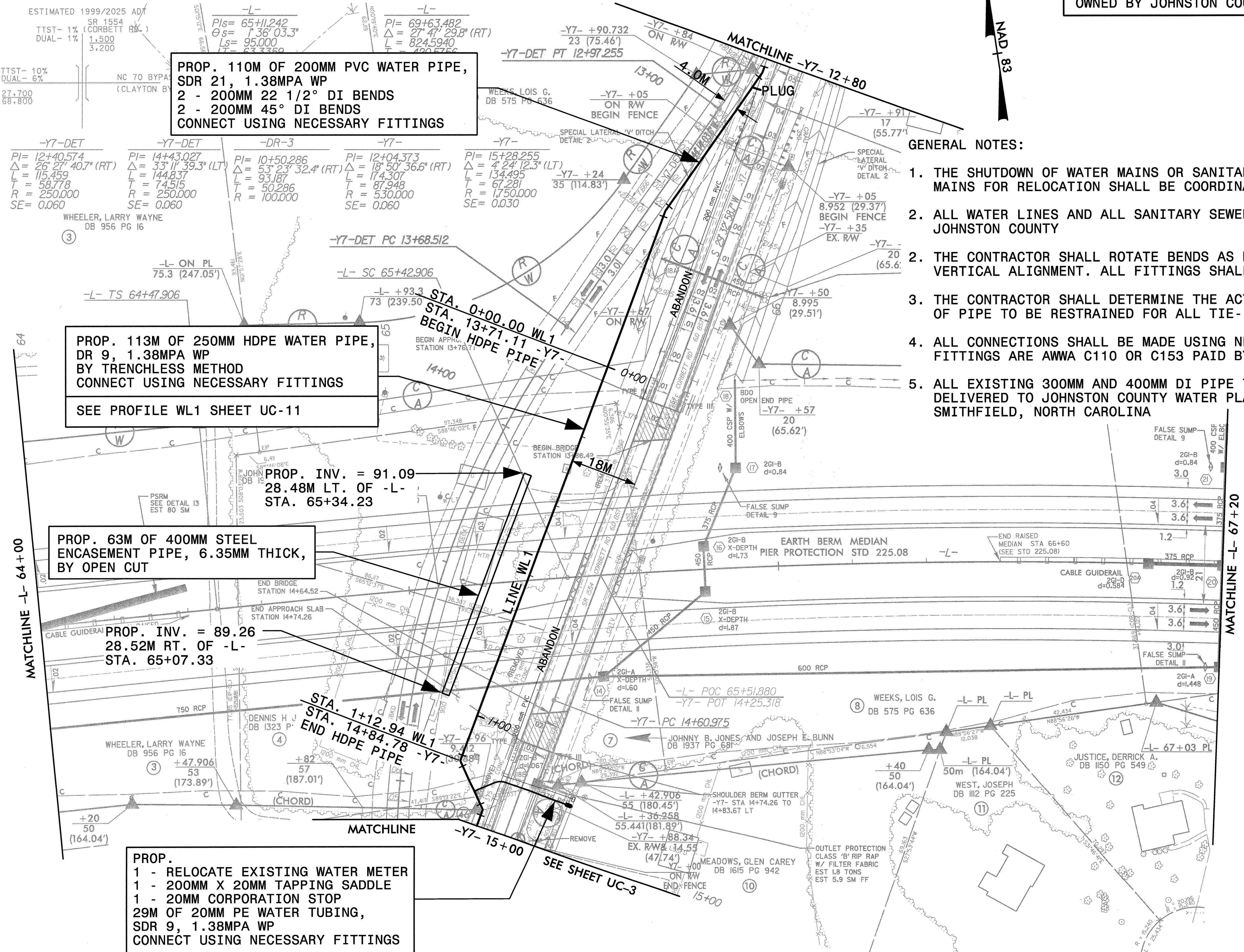
PROP. 63M OF 400MM STEEL  
ENCASEMENT PIPE, 6.35MM THICK,  
BY OPEN CUT

PROP. INV. = 89.26  
28.52M RT. OF -L-  
STA. 65+07.33

PROP.  
1 - RELOCATE EXISTING WATER METER  
1 - 200MM X 20MM TAPPING SADDLE  
1 - 20MM CORPORATION STOP  
29M OF 20MM PE WATER TUBING,  
SDR 9, 1.38MPA WP  
CONNECT USING NECESSARY FITTINGS

GENERAL NOTES:

1. THE SHUTDOWN OF WATER MAINS OR SANITARY SEWER FORCE MAINS FOR RELOCATION SHALL BE COORDINATED WITH JOHNSTON COUNTY.
2. ALL WATER LINES AND ALL SANITARY SEWER FACILITIES ARE OWNED BY JOHNSTON COUNTY
3. THE CONTRACTOR SHALL ROTATE BENDS AS NECESSARY TO PROVIDE FOR VERTICAL ALIGNMENT. ALL FITTINGS SHALL BE MECHANICAL JOINT.
4. ALL CONNECTIONS SHALL BE MADE USING NECESSARY FITTINGS. THESE FITTINGS ARE AWWA C110 OR C153 PAID BY C110 WEIGHT IN KILOGRAMS.
5. ALL EXISTING 300MM AND 400MM DI PIPE TO BE REMOVED SHALL BE DELIVERED TO JOHNSTON COUNTY WATER PLANT, 600 CLEARWATER DRIVE, SMITHFIELD, NORTH CAROLINA



657897.NC-2552B.VP0.NC.V2552BUC2.PSH  
02/17/2005 11:50:58 AM