

**ALL WATER AND SEWER LINES OWNED BY JOHNSTON COUNTY**

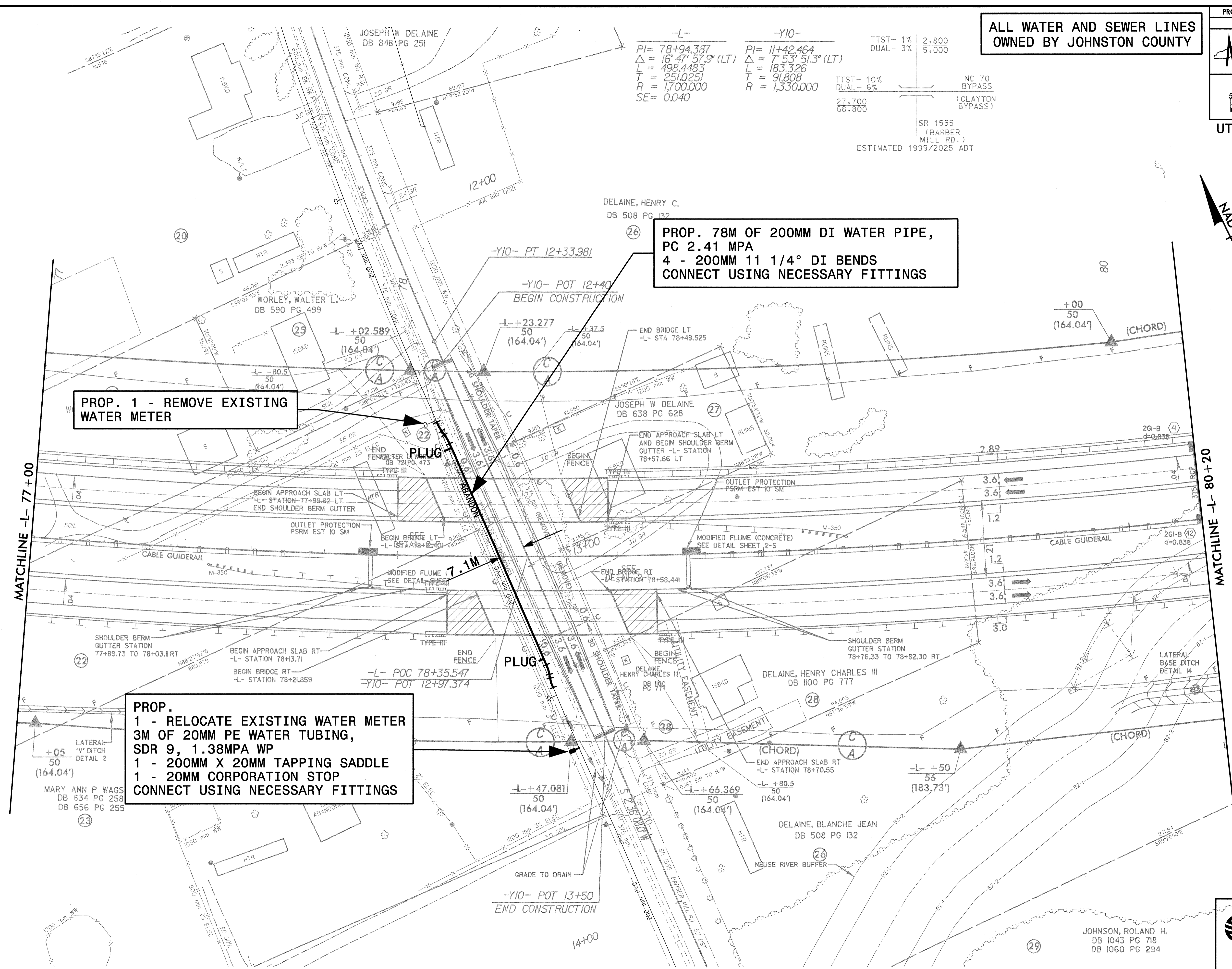
-L-                      -Y10-

PI= 78+94.387                      PI= 11+42.464  
 $\Delta = 16^\circ 47' 57.9''$  (LT)                       $\Delta = 7^\circ 53' 51.3''$  (LT)  
L = 498.4483                      L = 183.326  
T = 251.0251                      T = 91.808  
R = 1,700.000                      R = 1,330.000  
SE = 0.040

TTST- 1%                      2.800  
DUAL- 3%                      5.000

TTST- 10%                      NC 70 BYPASS  
DUAL- 6%                      (CLAYTON BYPASS)

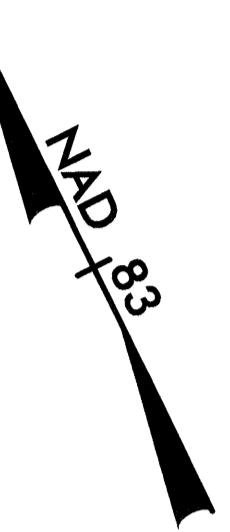
27.700                      SR 1555  
68.800                      (BARBER MILL RD.)  
ESTIMATED 1999/2025 ADT



**PROP. 1 - REMOVE EXISTING WATER METER**

**PROP. 78M OF 200MM DI WATER PIPE, PC 2.41 MPA  
4 - 200MM 11 1/4° DI BENDS  
CONNECT USING NECESSARY FITTINGS**

**PROP. 1 - RELOCATE EXISTING WATER METER  
3M OF 20MM PE WATER TUBING,  
SDR 9, 1.38MPA WP  
1 - 200MM X 20MM TAPPING SADDLE  
1 - 20MM CORPORATION STOP  
CONNECT USING NECESSARY FITTINGS**



G:\7987\NC-2552b\proj\dwg\2552buc4.pst  
 1/28/2005 02:53:48 PM