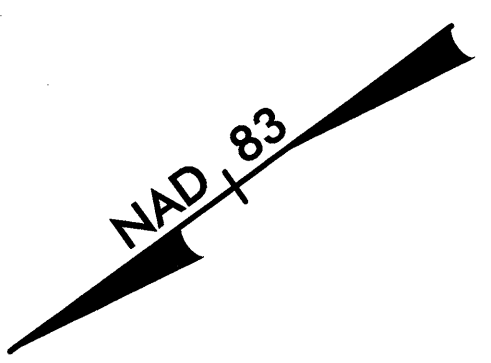
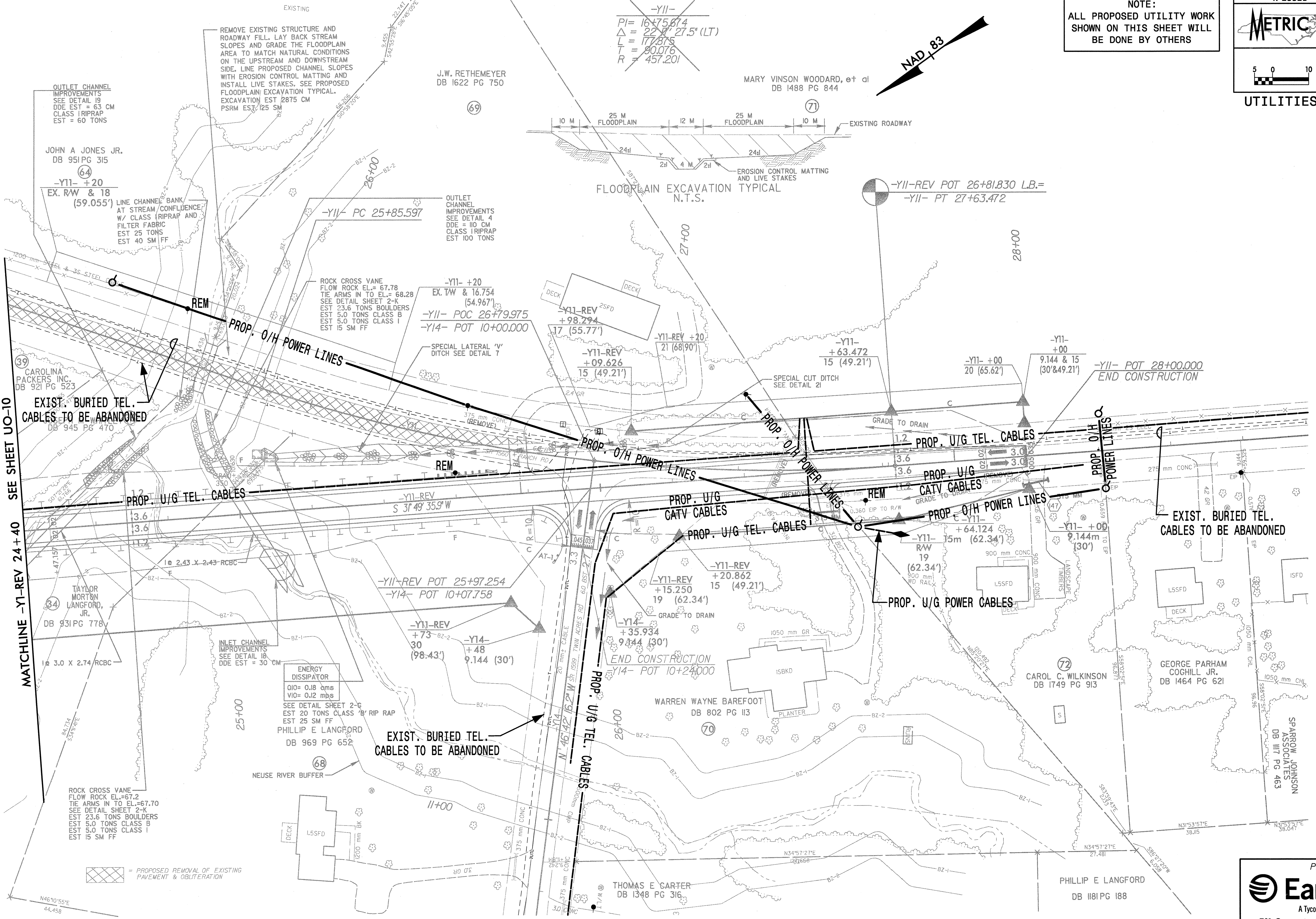


UTILITIES BY OTHERS

NOTE:
ALL PROPOSED UTILITY WORK
SHOWN ON THIS SHEET WILL
BE DONE BY OTHERS



~~-Y11-~~
 $PI = 16.75674$
 $\Delta = 22.4' \ 27.5' \ (LT)$
 $L = 177.875$
 $T = 80.076$
 $R = 457.201$



OUTLET CHANNEL
IMPROVEMENTS
SEE DETAIL 19
DDE EST = 63 CM
CLASS 1 RIPRAP
EST = 60 TONS

JOHN A JONES JR.
DB 951 PG 315

-Y11- +20
EX. R/W & 18
(59.055')

LINE CHANNEL BANK
AT STREAM/CONFLUENCE
W/ CLASS 1 RIPRAP AND
FILTER FABRIC
EST 25 TONS
EST 40 SM FF

REMOVE EXISTING STRUCTURE AND
ROADWAY FILL. LAY BACK STREAM
SLOPES AND GRADE THE FLOODPLAIN
AREA TO MATCH NATURAL CONDITIONS
ON THE UPSTREAM AND DOWNSTREAM
SIDE. LINE PROPOSED CHANNEL SLOPES
WITH EROSION CONTROL MATTING AND
INSTALL LIVE STAKES. SEE PROPOSED
FLOODPLAIN EXCAVATION TYPICAL.
EXCAVATION EST 2875 CM
PSRM EST 125 SM

J.W. RETHEMEYER
DB 1622 PG 750

MARY VINSON WOODARD, et al
DB 1488 PG 844

FLOODPLAIN EXCAVATION TYPICAL
N.T.S.

OUTLET CHANNEL
IMPROVEMENTS
SEE DETAIL 4
DDE = 100 CM
CLASS 1 RIPRAP
EST 100 TONS

ROCK CROSS VANE
FLOW ROCK EL. = 67.78
TIE ARMS IN TO EL. = 68.28
SEE DETAIL SHEET 2-K
EST 23.6 TONS BOULDERS
EST 5.0 TONS CLASS B
EST 5.0 TONS CLASS I
EST 15 SM FF

-Y11- +20
EX. T/W & 16.754
(54.967')
-Y11- POC 26+79.975
-Y14- POT 10+00.000

SPECIAL LATERAL 'V'
DITCH SEE DETAIL 7

DECK
-Y11-REV
+98.294
17 (55.77')

-Y11-REV +20
+09.626
15 (49.21')

-Y11-REV +20
21 (68.90')

-Y11-
+63.472
15 (49.21')

-Y11- +00
20 (65.62')

-Y11- +00
9.144 & 15
(30' & 49.21')

-Y11- POT 28+00.000
END CONSTRUCTION

EXIST. BURIED TEL.
CABLES TO BE ABANDONED
DB 945 PG 470

SEE SHEET UO-10
MATCHLINE -Y1-REV 24+40

PROP. U/G TEL. CABLES

TAYLOR
MORTON
LANGFORD,
JR.
DB 931 PG 778

1 @ 3.0 X 2.74 RCBC

ROCK CROSS VANE
FLOW ROCK EL. = 67.2
TIE ARMS IN TO EL. = 67.70
SEE DETAIL SHEET 2-K
EST 23.6 TONS BOULDERS
EST 5.0 TONS CLASS B
EST 5.0 TONS CLASS I
EST 15 SM FF

INLET CHANNEL
IMPROVEMENTS
SEE DETAIL 18
DDE EST = 30 CM

ENERGY
DISSIPATOR
Q10 = 0.18 cms
V10 = 0.12 mps
SEE DETAIL SHEET 2-G
EST 20 TONS CLASS 1 RIP RAP
EST 25 SM FF
PHILLIP E LANGFORD
DB 969 PG 652

EXIST. BURIED TEL.
CABLES TO BE ABANDONED

-Y11-REV POT 25+97.254
-Y14- POT 10+07.758

-Y11-REV
+73-82-2
30
(98.43')

-Y14-
+48
9.144 (30')

END CONSTRUCTION
-Y14- POT 10+24.000

-Y14-
+35.934
9.144 (30')

-Y11-REV
+20.862
15 (49.21')

-Y11-REV
+15.250
19 (62.34')

-Y11-
+64.124
15m (62.34')

-Y11-
R/W
19
(62.34')

-Y11- +00
9.144m
(30')

EXIST. BURIED TEL.
CABLES TO BE ABANDONED

CAROL C. WILKINSON
DB 1749 PG 913

GEORGE PARHAM
COGHILL JR.
DB 1464 PG 621

SPARROW JOHNSON
ASSOCIATES
DB 117 PG 463

WARREN WAYNE BAREFOOT
DB 802 PG 113

THOMAS E CARTER
DB 1348 PG 316

PHILLIP E LANGFORD
DB 1181 PG 188

PROPOSED REMOVAL OF EXISTING
PAVEMENT & OBLITERATION

Prepared by:
 EarthTech
 A Tyco International Ltd. Company
 701 Corporate Center Drive, Suite 475
 Raleigh, NC 27607
 (919) 854-6200 - (919) 854-6259(fax)

98.7387 (N) - 2552B.dwg | AutoCAD 2000 | 11/15/13 2:48 PM