

UTILITIES BY OTHERS

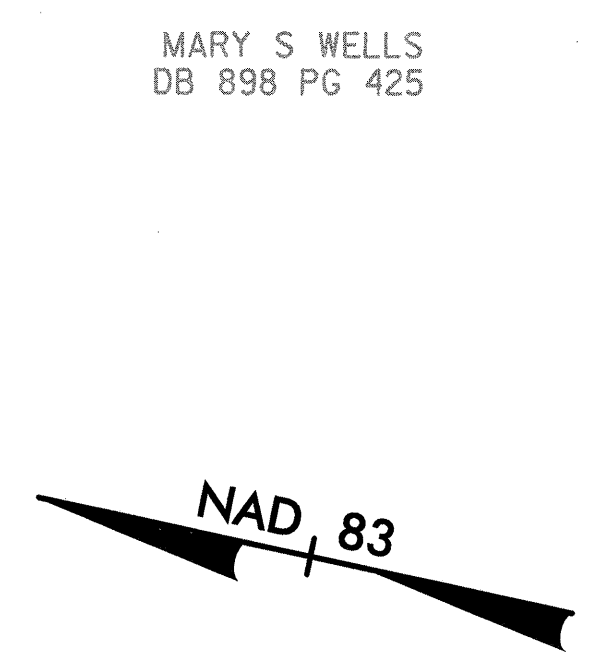
NOTE:  
ALL PROPOSED UTILITY WORK  
SHOWN ON THIS SHEET WILL  
BE DONE BY OTHERS

MATCHLINE -Y11- 15+10.500 SEE SHEET UO-8

MATCHLINE -Y13-REV 10+40 SEE SHEET UO-8

MATCHLINE -Y11- 17+38

-Y13-	-Y13-	-Y11-	-Y13-REV
PI= 12+05.300	PI= 10+77.453	PI= 17+98.868	PI= 10+88.120
Δ = 29° 09' 32.9" (RT)	Δ = 37° 01' 13.4" (LT)	Δ = 67° 39' 00.3" (LT)	Δ = 85° 26' 15.3" (LT)
L = 48.087	L = 84.684	L = 399.470	L = 44.735
T = 24.576	T = 43.879	T = 226.706	T = 27.701
R = 94.488	R = 131.064 (61)	R = 338.329	R = 30.000
			SE= 0.060

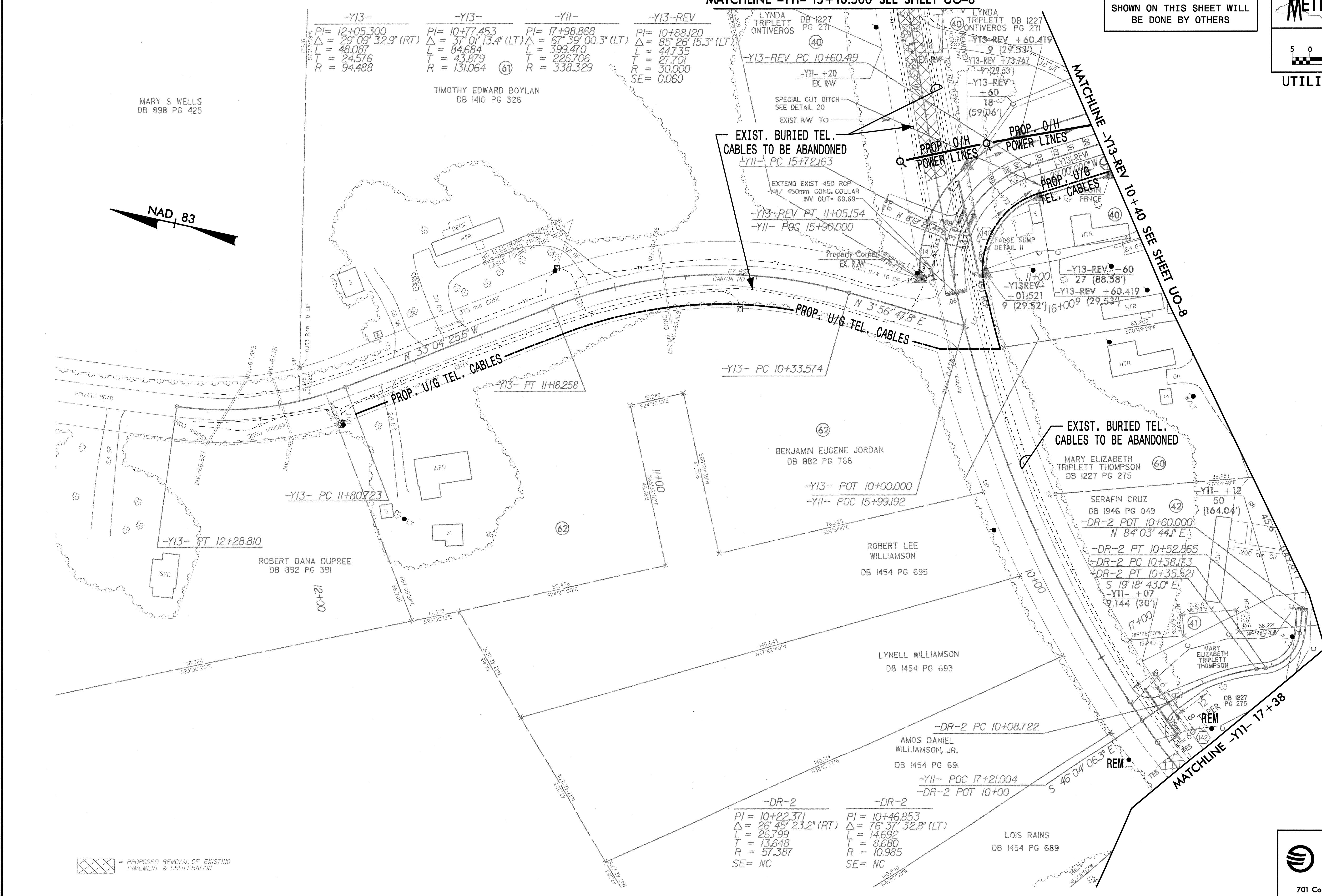


MARY S WELLS  
DB 898 PG 425

TIMOTHY EDWARD BOYLAN  
DB 1410 PG 326

EXIST. BURIED TEL.  
CABLES TO BE ABANDONED  
-Y11- PC 15+72.163

EXIST. BURIED TEL.  
CABLES TO BE ABANDONED



G:\7987\1\2552b\prj\ubov\2552buo12.psf  
 02/04/2005 11:57:30 AM

= PROPOSED REMOVAL OF EXISTING PAVEMENT & OBLITERATION

-DR-2	-DR-2
PI = 10+22.371	PI = 10+46.853
Δ = 26° 45' 23.2" (RT)	Δ = 76° 37' 32.8" (LT)
L = 26.799	L = 14.692
T = 13.648	T = 8.680
R = 57.387	R = 10.985
SE= NC	SE= NC

Prepared by:

A Tyco International Ltd. Company  
 701 Corporate Center Drive, Suite 475  
 Raleigh, NC 27607  
 (919) 854-6200 - (919) 854-6259(fax)