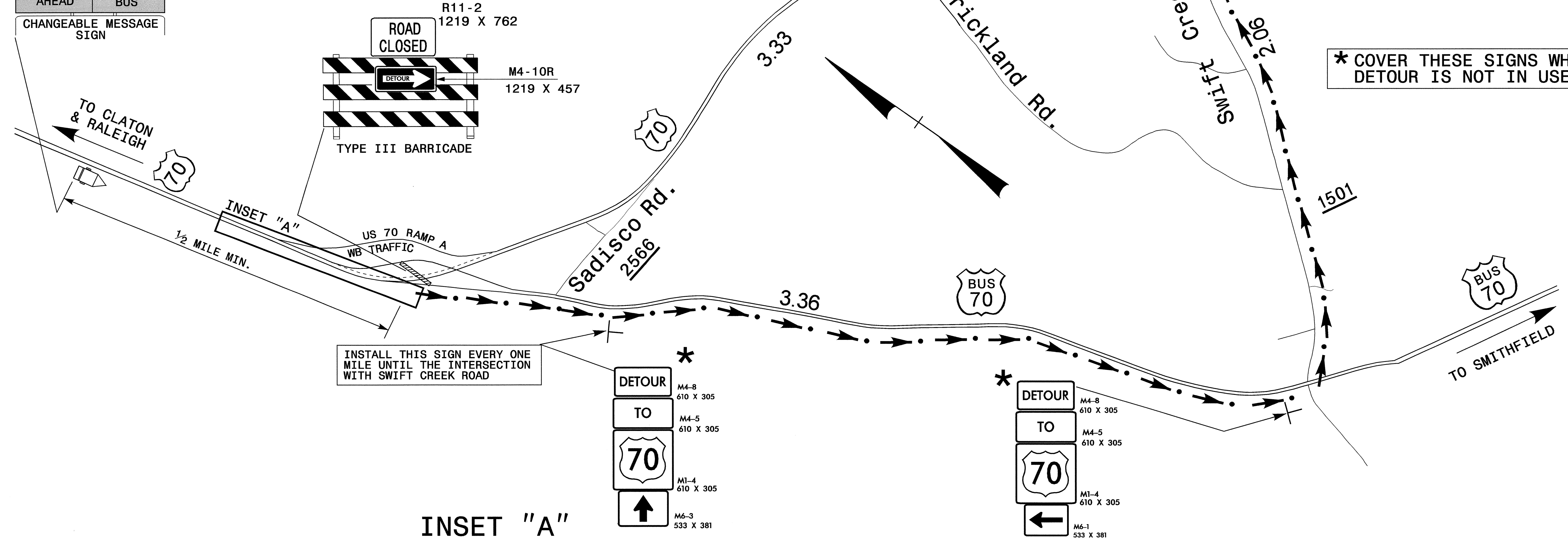


THIS SHEET WILL BE USED TO DETOUR EB US 70 BYPASS TRAFFIC FOR GIRDER INSTALLATION OF DUAL BRIDGES ON -Y4-. THIS SHEET CAN BE USED MONDAY THRU THURSDAY, FROM 11:00 P.M. TO 6:00 A.M.

MESSAGE NO. 1	MESSAGE NO. 2
US 70 CLOSED AHEAD	USE US 70 BUS

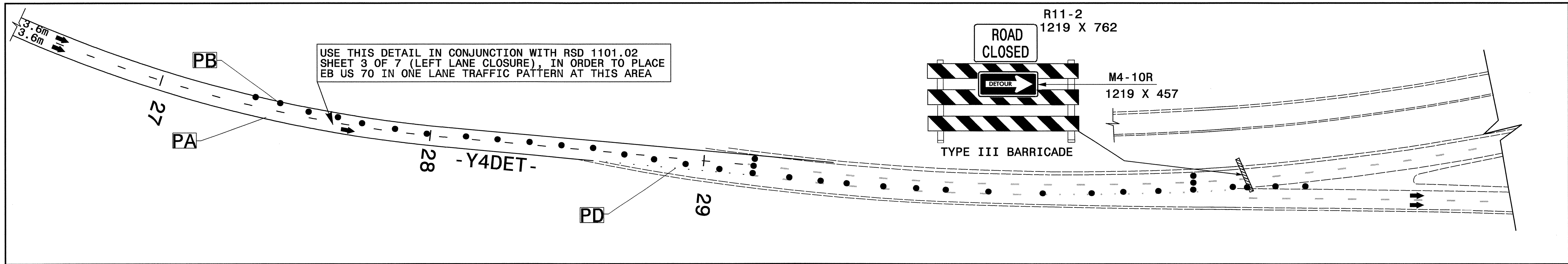
CHANGEABLE MESSAGE SIGN



* COVER THESE SIGNS WHEN DETOUR IS NOT IN USE.

INSTALL THIS SIGN EVERY ONE MILE UNTIL THE INTERSECTION WITH SWIFT CREEK ROAD

INSET "A"



LEGEND

TEMPORARY MARKINGS PLACED IN PREVIOUS PHASES/ EXISTING MARKINGS

APPROVED: *Joseph Hal* DATE: 2/2/05

SEAL

OFFSITE DETOUR MAP AND SIGNS FOR EB US 70

SCALE: NONE		REVISIONS
DATE: JAN. 2005		
DWG. BY: HAL		
DESIGN BY: HAL		
REVIEWED BY: JLP		

I7-FEB-2005 08:10
 \spt\5-cct\501\172552B&C\TCP\AREALV R-2552B&C-TC-BTCP.dgn
 mcdawkins - AT TEL: 252-424-250