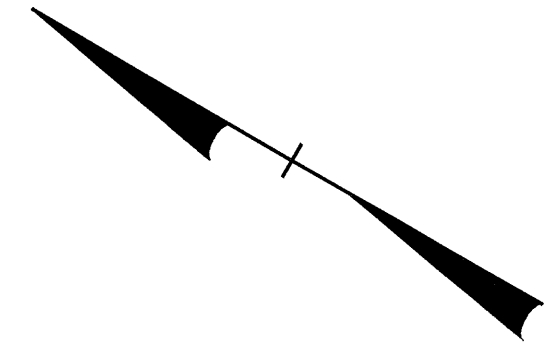
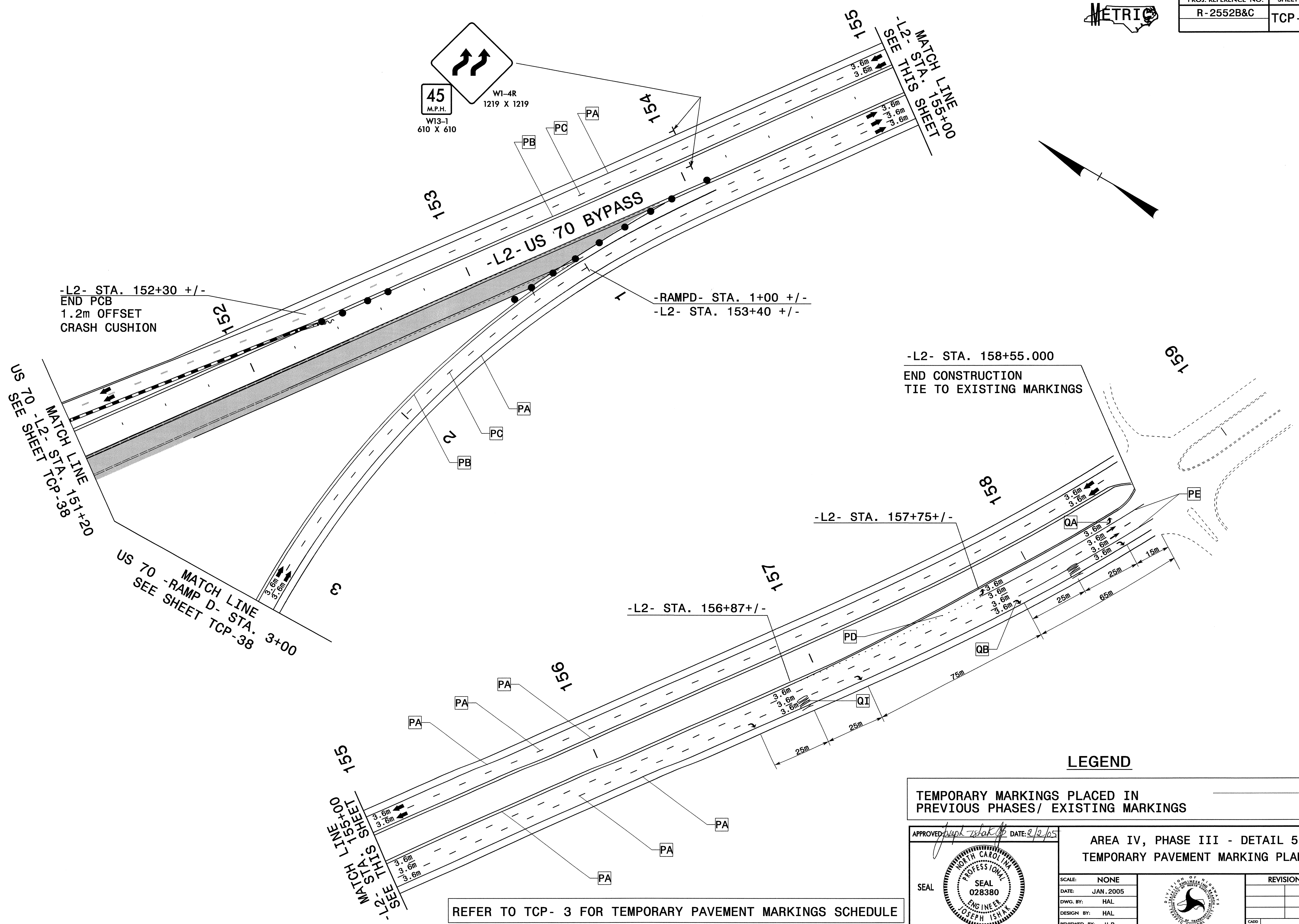




PROJ. REFERENCE NO.	SHEET NO.
R-2552B&C	TCP-40



-L2- STA. 152+30 +/-
END PCB
1.2m OFFSET
CRASH CUSHION

-RAMPD- STA. 1+00 +/-
-L2- STA. 153+40 +/-

-L2- STA. 158+55.000
END CONSTRUCTION
TIE TO EXISTING MARKINGS

US 70 -L2- STA. 151+20
MATCH LINE
SEE SHEET TCP-38

US 70 -RAMP D- STA. 3+00
MATCH LINE
SEE SHEET TCP-38

-L2- STA. 157+75 +/-

-L2- STA. 156+87 +/-

LEGEND

TEMPORARY MARKINGS PLACED IN PREVIOUS PHASES/ EXISTING MARKINGS

APPROVED: *Joseph Ishak* DATE: 2/2/05



AREA IV, PHASE III - DETAIL 5
TEMPORARY PAVEMENT MARKING PLAN

SCALE:	NONE		REVISIONS
DATE:	JAN. 2005		
DWG. BY:	HAL		
DESIGN BY:	HAL		
REVIEWED BY:	JLP		

REFER TO TCP- 3 FOR TEMPORARY PAVEMENT MARKINGS SCHEDULE

01-FEB-2005 07:05
 \NETS-CCF50\N\2552B&C\TCP\AREA\IV R-2552B&C.TC.BTCP.dgn
 palawaridos AT TELC206424