



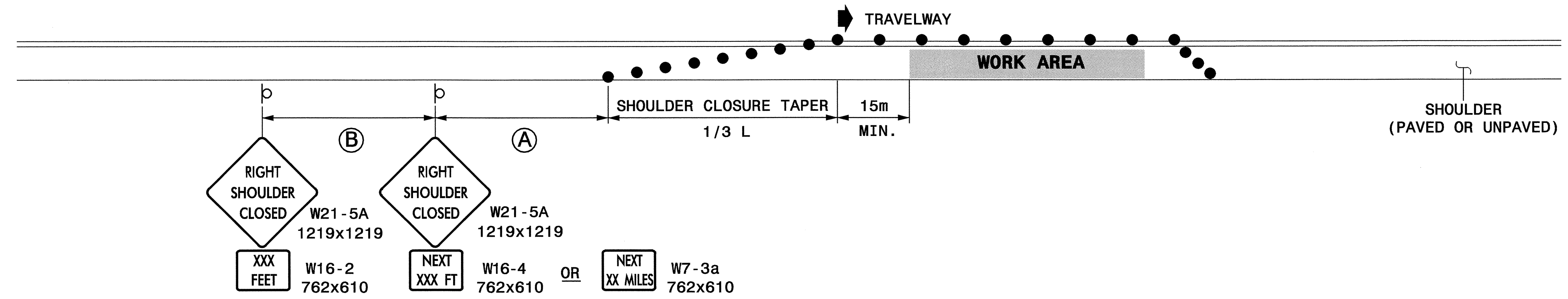
STATE OF NORTH CAROLINA  
DEPT. OF TRANSPORTATION  
DIVISION OF HIGHWAYS  
RALEIGH, N.C.

1-05

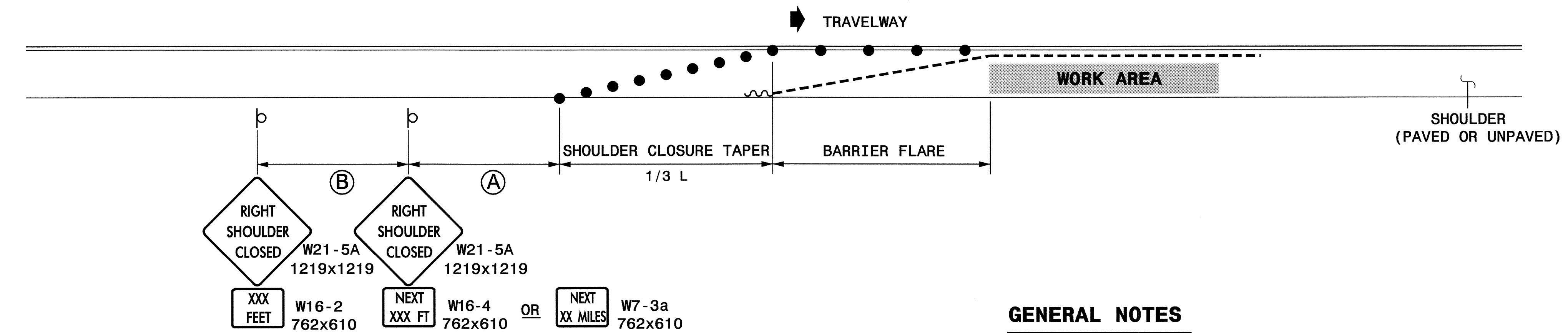
METRIC STANDARD DRAWING FOR  
TEMPORARY SHOULDER CLOSURES

SHEET 1 OF 1  
**1101D04**

### SHOULDER CLOSURES UTILIZING DRUMS



### SHOULDER CLOSURES UTILIZING TEMPORARY BARRIER



#### GENERAL NOTES

- PLACE SHOULDER CLOSURE SIGNS ON THE SAME SIDE AS THE SHOULDER THAT IS CLOSED.
- PLACE DRUMS IN THE SHOULDER TAPER AT THE MAXIMUM SPACING EQUAL IN METERS TO 1/3rd THE POSTED SPEED LIMIT (mph). THE MAXIMUM SPACING OF DRUMS ALONG THE WORK AREA AND BARRIER FLARE IS EQUAL IN METERS TO 2/3rds THE POSTED SPEED LIMIT (mph).
- FLARE THE APPROACH END OF PORTABLE CONCRETE BARRIER BEYOND THE SHOULDER AND USE A CRASH CUSHION FOR PROTECTION IF THE EXPOSED END OF THE BARRIER IS WITHIN THE "CLEAR ZONE".
- USE STATIONARY SIGNS FOR LONG TERM OPERATIONS (LONGER THAN 3 DAYS).
- REFER TO STD. 1101.11 SHEETS 1, 3, & 4, FOR "L" DISTANCE, BARRIER FLARE RATES, AND SIGN SPACING.

#### LEGEND

- TEMPORARY CRASH CUSHION
- PORTABLE CONCRETE BARRIER
- DRUM
- STATIONARY OR PORTABLE SIGN
- DIRECTION OF TRAFFIC FLOW

STATE OF NORTH CAROLINA  
DEPT. OF TRANSPORTATION  
DIVISION OF HIGHWAYS  
RALEIGH, N.C.

1-05

METRIC STANDARD DRAWING FOR  
TEMPORARY SHOULDER CLOSURES

SHEET 1 OF 1  
**1101D04**

APPROVED: *Joseph Ishik* DATE: 2/1/05

REPLACEMENT DETAIL FOR  
RSD 1101.04

SCALE: NONE		REVISIONS
DATE: JAN. 2005		
DWG. BY: HAL		
DESIGN BY: HAL		
REVIEWED BY: JLP		

01-FEB-2005 07:01  
\\nets-cgtsol\NR2552B\TCPA.M.I.II.r-2552b&c-TC-BTop.dgn  
mlawmados AT TETC206r24