

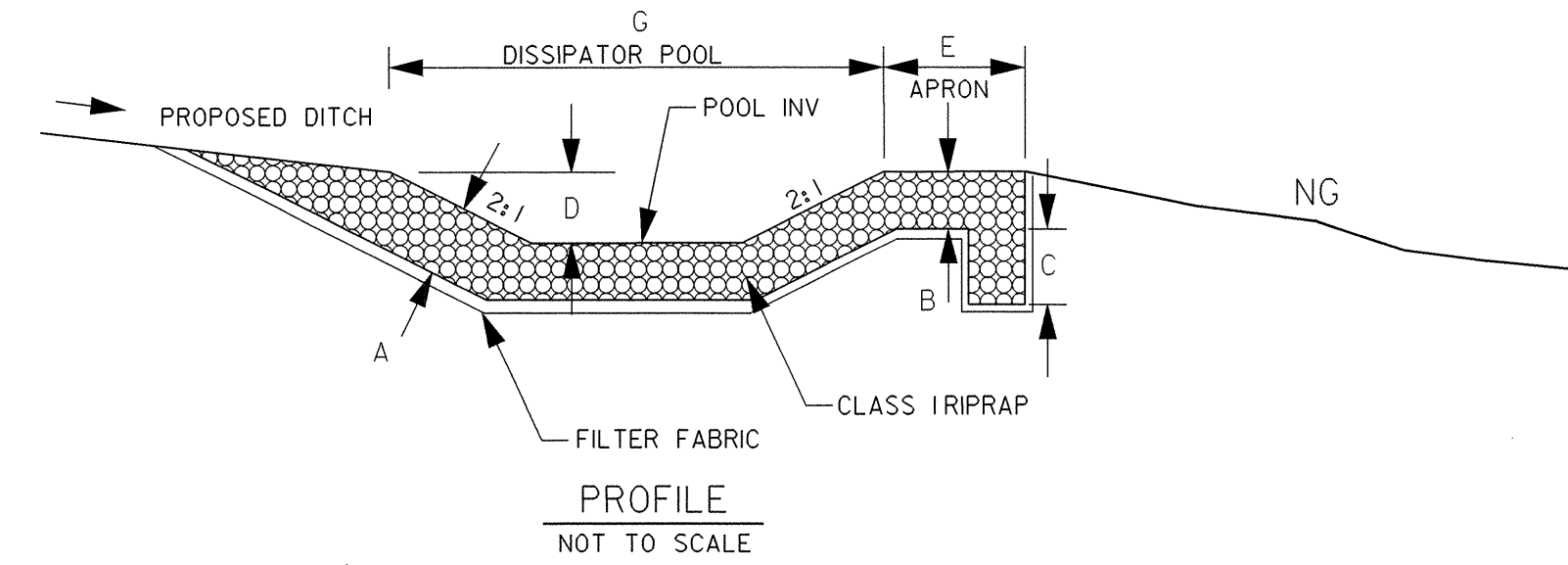
050197

REVISIONS

0
1
2
3
4
5
6
7
8
9
10

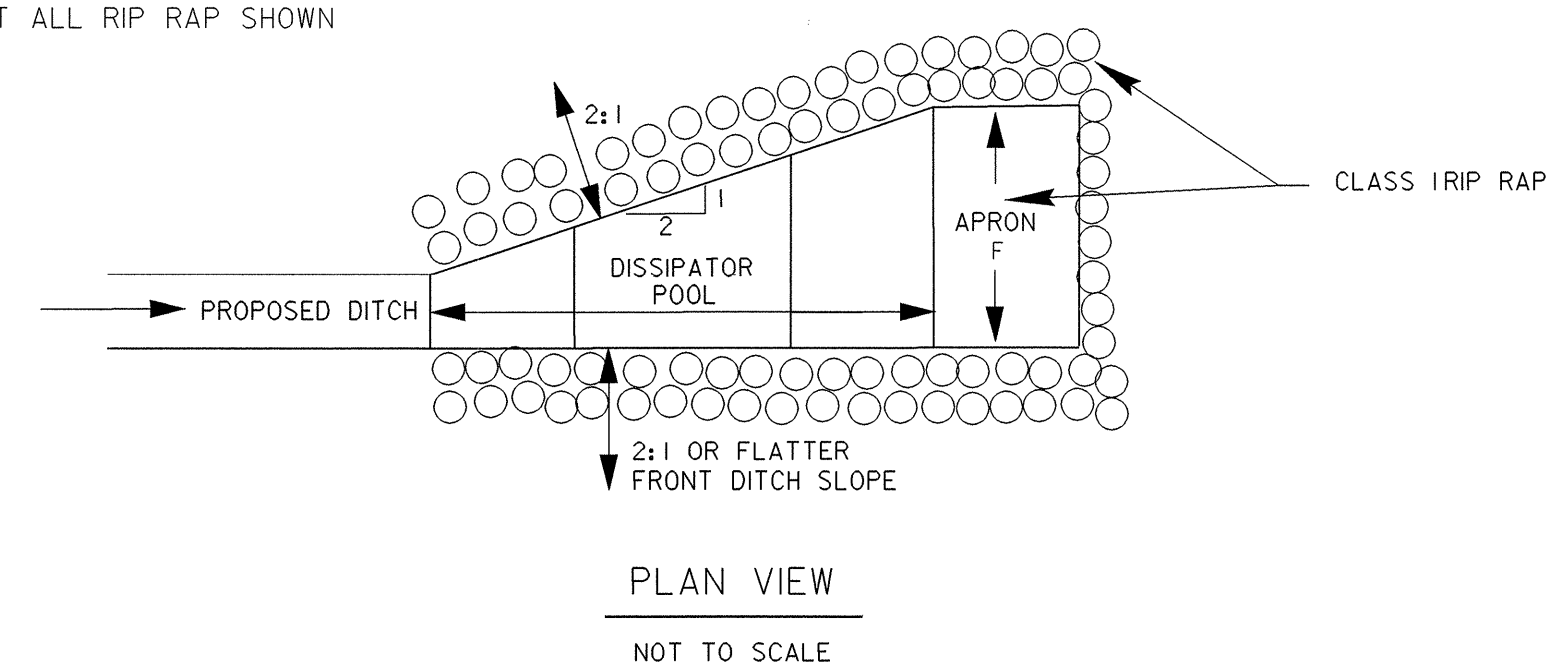
PROJECT REFERENCE NO. R-2552B	SHEET NO. 2-G
R/W SHEET NO.	
ROADWAY DESIGN ENGINEER	HYDRAULICS ENGINEER
CONST. REV.	
R/W REV.	

DETAIL OF RIP-RAPPED DITCH ENERGY DISSIPATOR BASIN



BASIN #	LOCATION
1	Sta 75+55 To 75+65 -L- (R+)
2	Sta 84+20 To 84+33 -L- (L+)
3	Sta 92+40 To 92+48 -L- (L+)
4	Sta 24+27 To 24+34 -YII-REV (L+)
5	Sta 25+05 To 25+13 -YII-REV (L+)

NOT ALL RIP RAP SHOWN

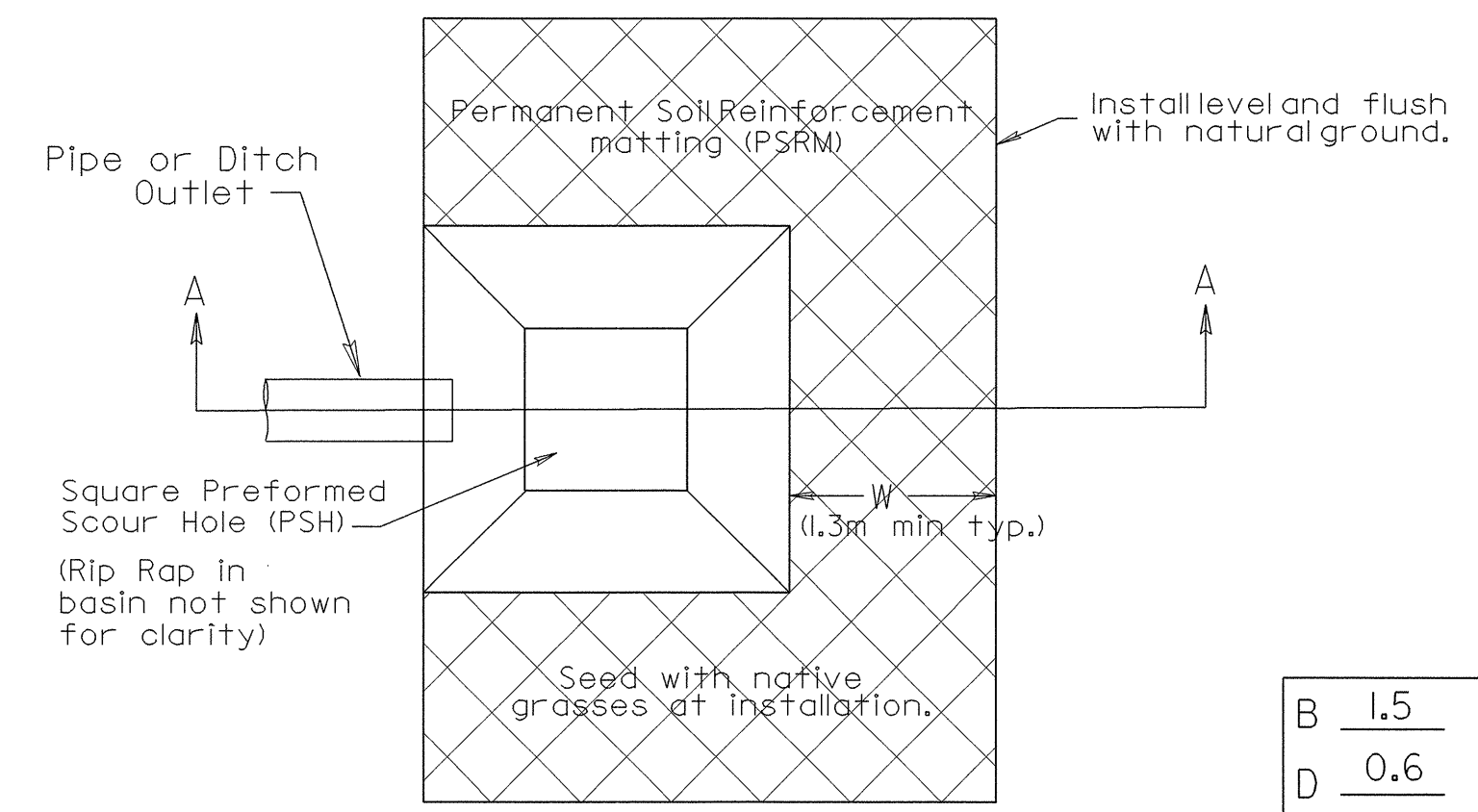


DIM. (m)	RIP RAP BASIN #				
	1	2	3	4	5
A	0.46	0.46	0.46	0.46	0.46
B	0.46	0.46	0.46	0.46	0.46
C	0.46	0.46	0.46	0.46	0.46
D	0.61	0.46	0.46	0.46	0.46
E	3.7	4.0	2.4	2.4	2.4
F	3.8	5.0	2.1	2.4	2.4
G	6.9	8.2	5.2	4.9	4.9
APPROXIMATE ELEVATIONS					
POOL INV	90.55	86.04	74.64	69.04	68.54
APRON	91.6	86.50	75.10	69.50	69.00

ALL DIMENSIONS APPROXIMATE

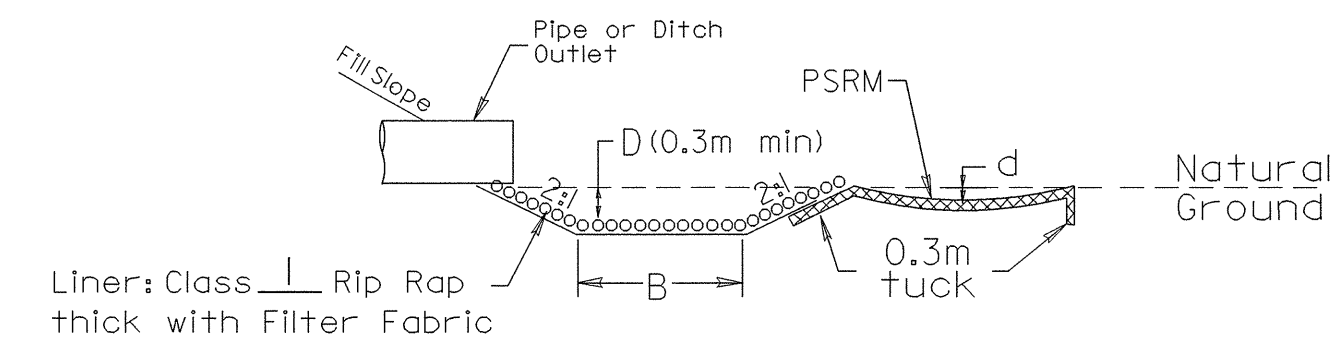
PREFORMED SCOUR HOLE

PLAN VIEW



B	1.5
D	0.6
W	1.3
d	0.15

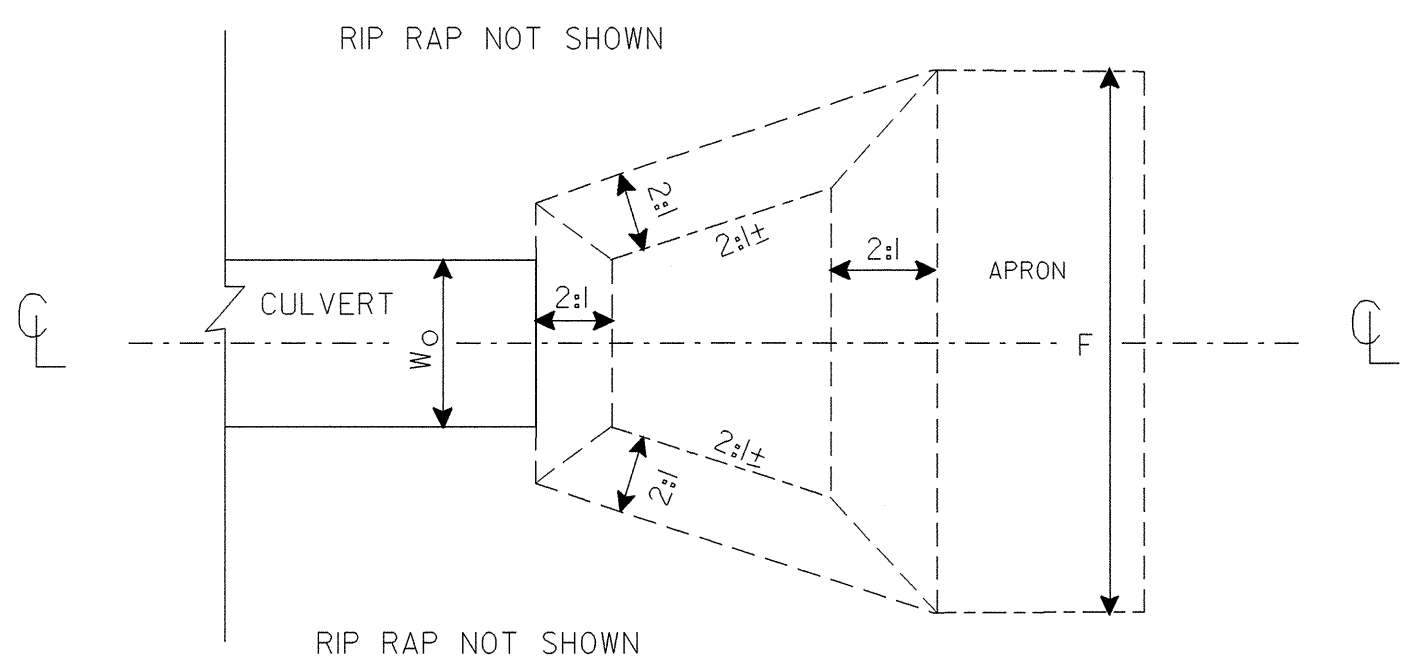
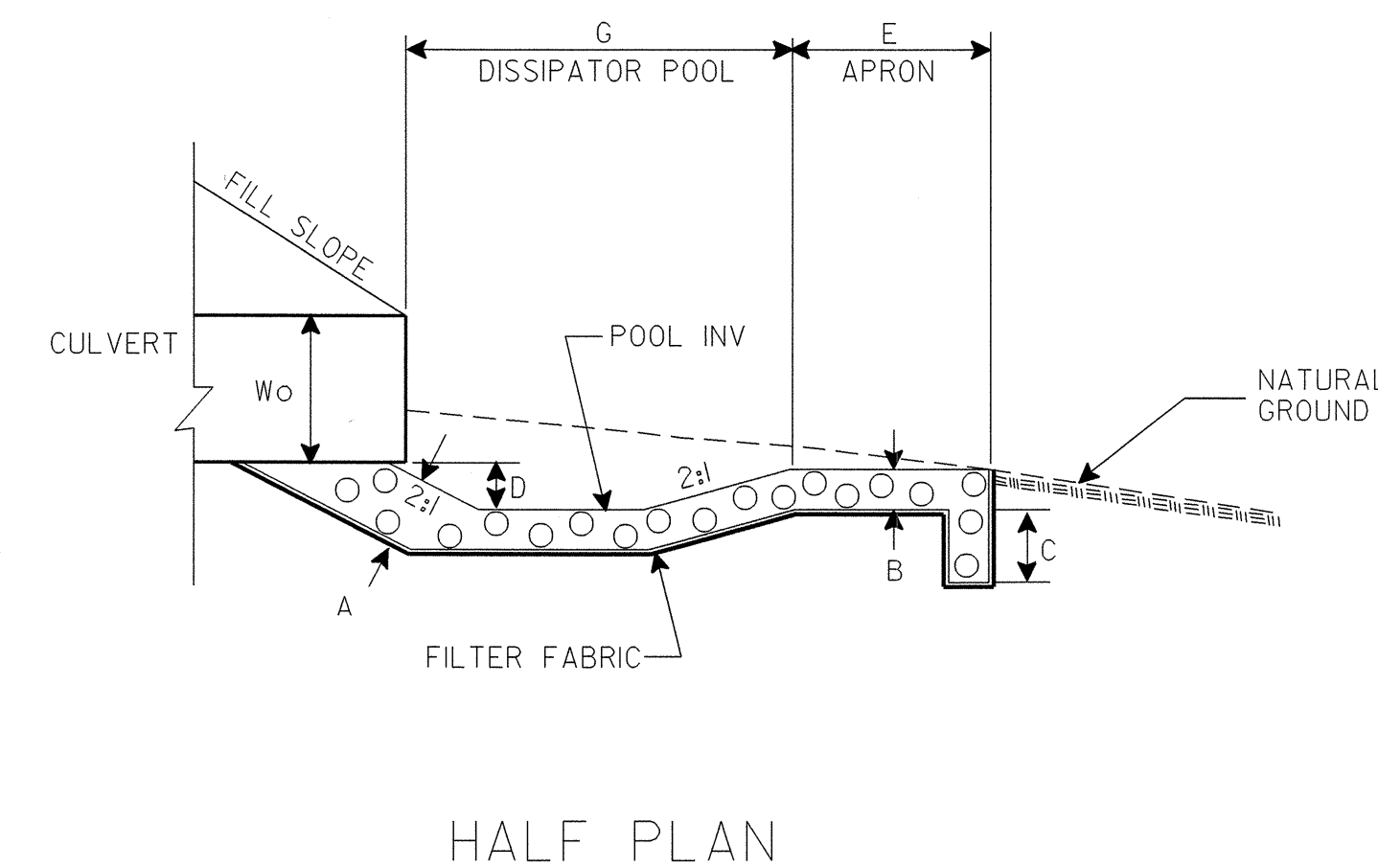
SECTION A-A



BASIN #	LOCATION (AT OUTLET)
1	Sta 71+61 -L- (R+)
2	Sta 72+20 -L- (R+)
3	Sta 73+21 -L- (R+)
4	Sta 74+06 -L- (R+)
5	Sta 76+20 -L- (L+)
6	Sta 81+00 -L- (L+)
7	Sta 87+17 -L- (R+)
8	Sta 88+30 -L- (R+)
9	Sta 92+60 -L- (R+)
10	Sta 14+28 -YII-REV (R+)
11	Sta 14+28 -YII-REV (L+)
12	Sta 14+91 -YII-REV (R+)
13	Sta 15+00 -YII-REV (L+)

DETAIL OF RIP-RAPPED OUTLET ENERGY DISSIPATOR BASIN

SECTION C-C



DIM. (m)	RIP RAP BASIN #	
	1	2
A	0.46	0.61
B	0.46	0.61
C	0.46	0.61
D	0.46	0.49
E	3.0	3.7
F	7.0	10.1
G	6.4	7.6
APPROXIMATE ELEVATIONS		
POOL INV	76.04	68.01
APRON	76.50	68.50

ALL DIMENSIONS APPROXIMATE

BASIN #	LOCATION (AT OUTLET)
1	Sta 93+39 -L- (R+)
2	Sta 4+10 RP-A- (R+)

31-JAN-2005 15:52:59 E:\Emerg\upath
RACruz rd-04o34