

08-APR-2004 11:36  
 W:\Special Details\857701\857701.dgn  
 J:\05212566  
 J:\05212566

STATE OF  
 NORTH CAROLINA  
 DEPT. OF TRANSPORTATION  
 DIVISION OF HIGHWAYS  
 RALEIGH, N.C.

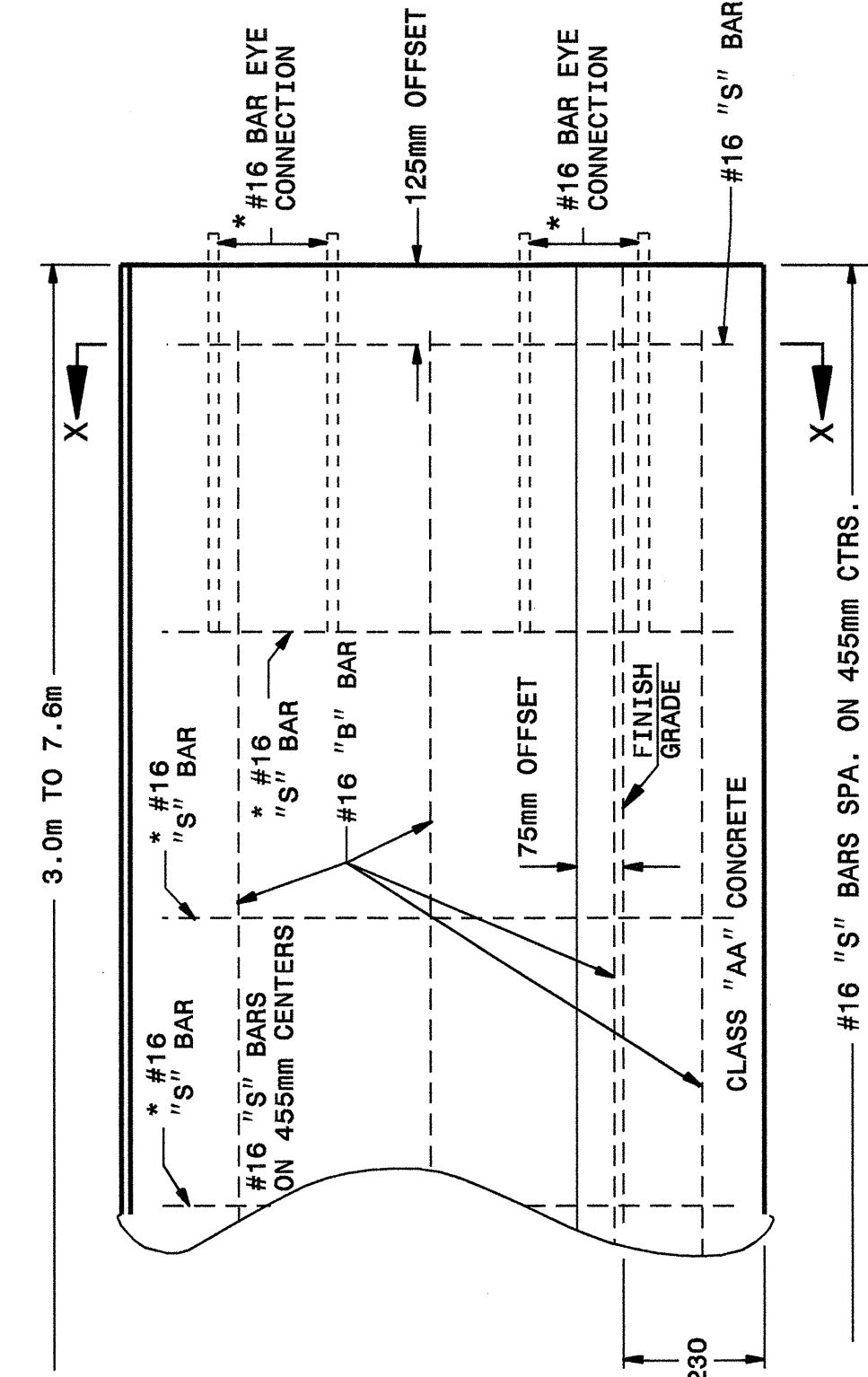
METRIC DETAIL DRAWING FOR  
**PRECAST REINFORCED  
 CONCRETE BARRIER**  
 1.0m SINGLE FACED

SHEET 5 OF 8  
**857D01**

STATE OF  
 NORTH CAROLINA  
 DEPT. OF TRANSPORTATION  
 DIVISION OF HIGHWAYS  
 RALEIGH, N.C.

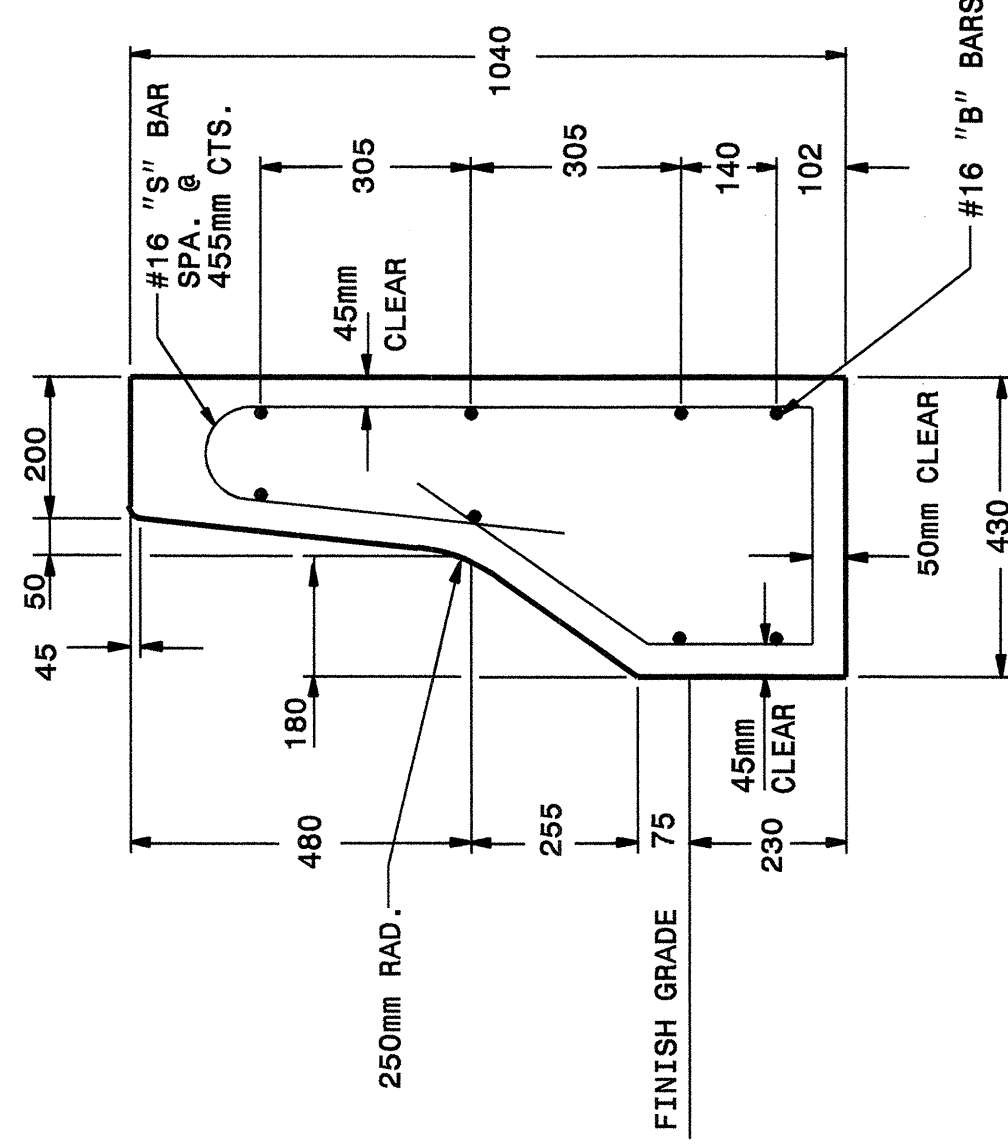
METRIC DETAIL DRAWING FOR  
**PRECAST REINFORCED  
 CONCRETE BARRIER**  
 1.0m SINGLE FACED

SHEET 5 OF 8  
**857D01**

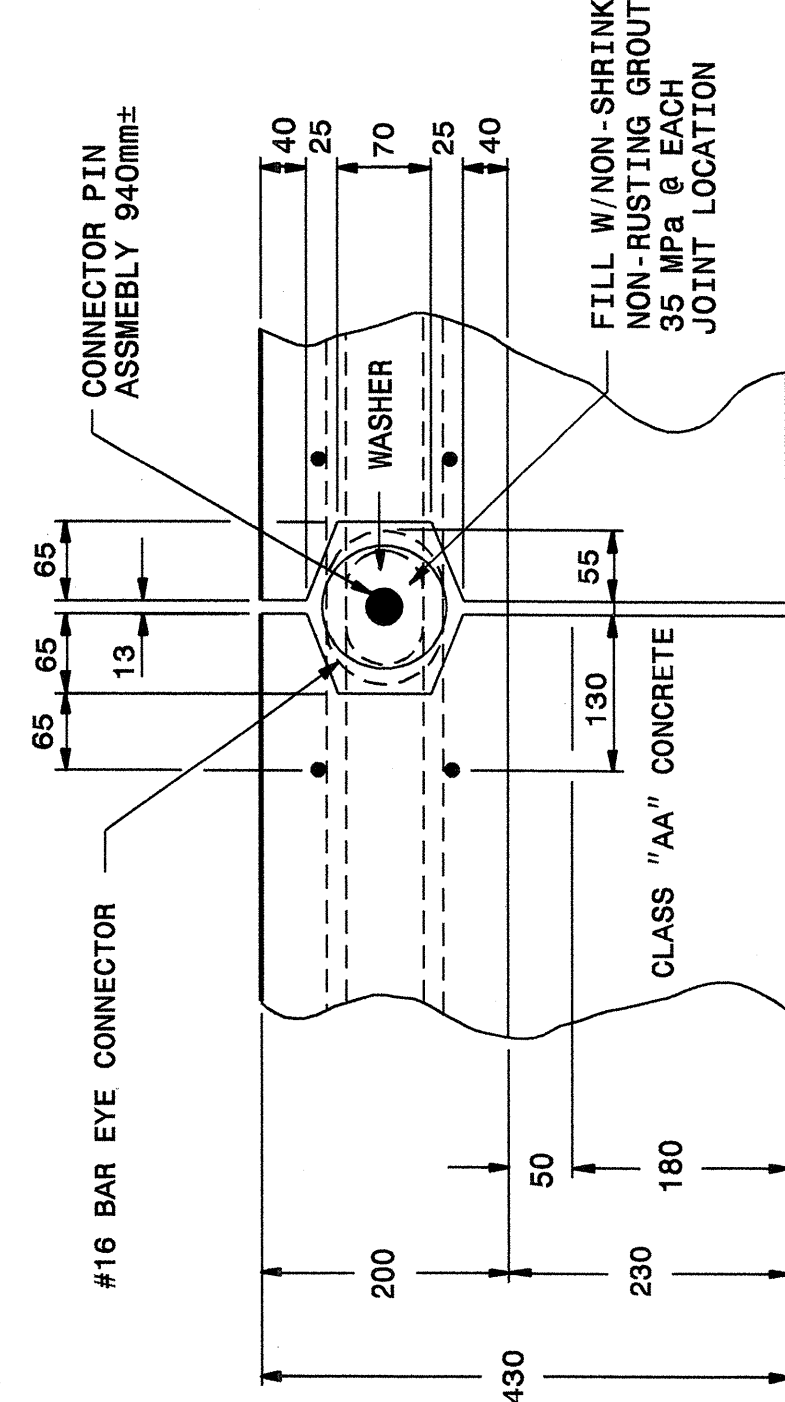


**PART FRONT ELEVATION**

\*SEE SHEET 4  
 FOR DIMENSIONS

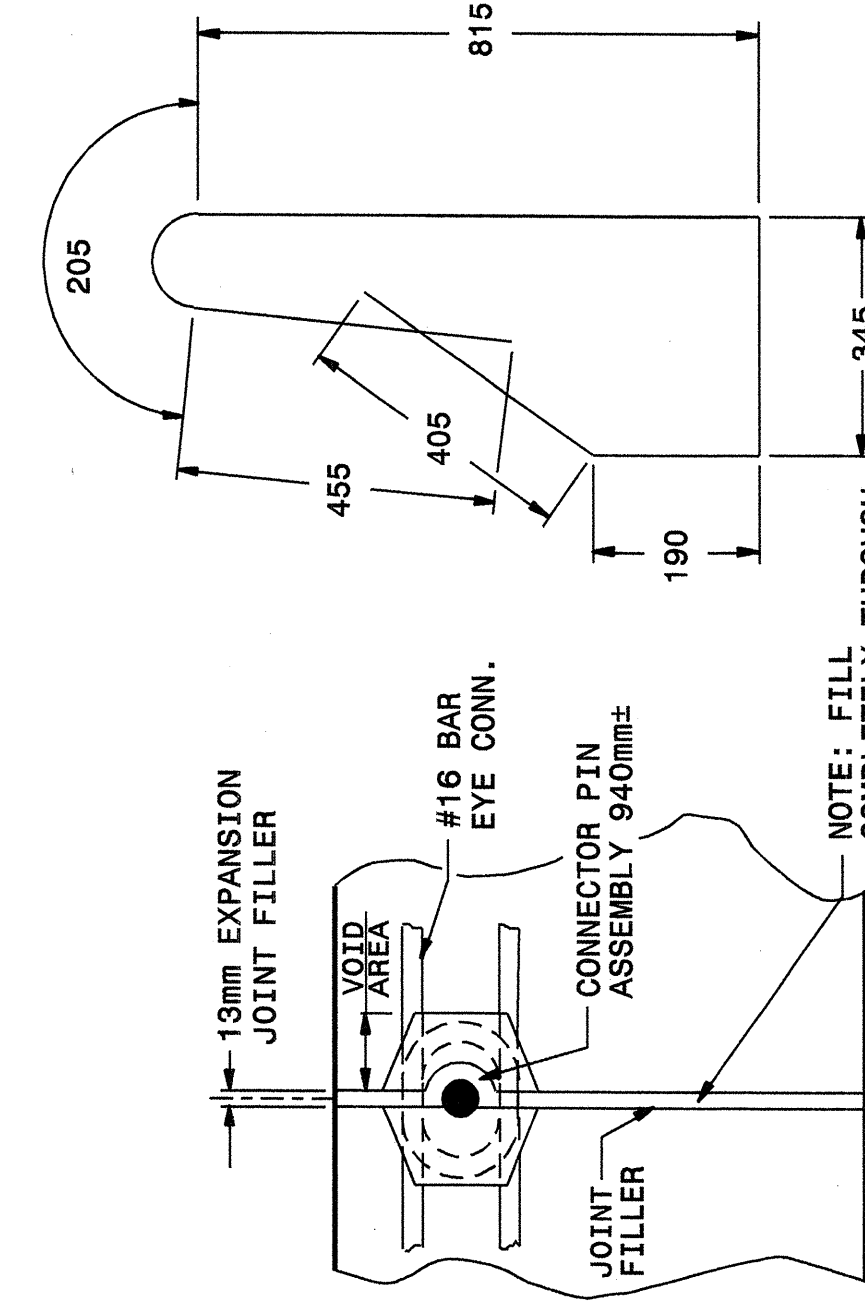


**DETAIL X-X  
 CROSS SECTIONAL VIEW**



**PLAN OF BONDED CONNECTION OF PRECAST UNIT**

**Note:**  
 This drawing is dimensioned in  
 millimeters unless otherwise  
 depicted within the drawing.



**JOINT FILLER DETAIL**

**NOTE:** FILL COMPLETELY THROUGH BARRIER SECTION @ 24.4mm<sup>2</sup> INTERVALS

STATE OF  
 NORTH CAROLINA  
 DEPT. OF TRANSPORTATION  
 DIVISION OF HIGHWAYS  
 RALEIGH, N.C.

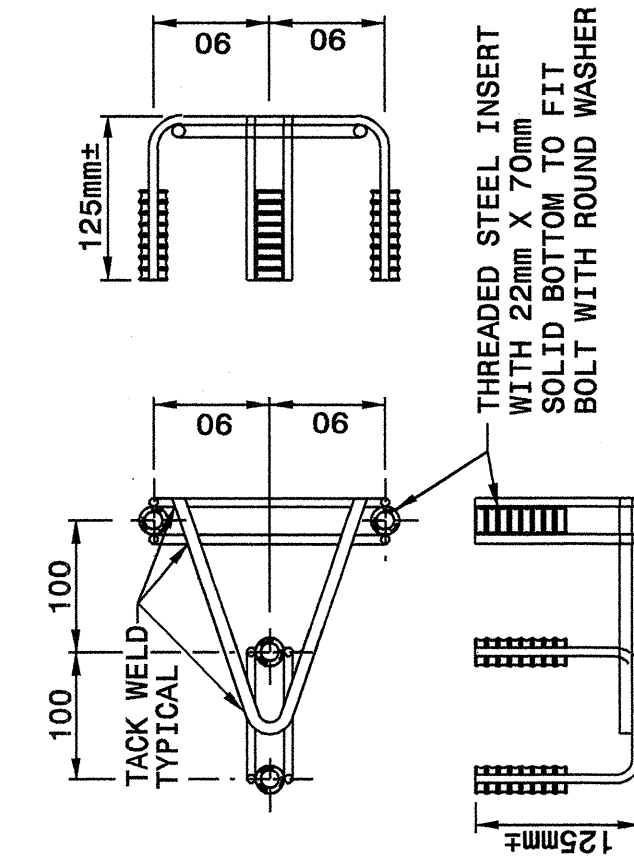
METRIC DETAIL DRAWING FOR  
**PRECAST REINFORCED  
 CONCRETE BARRIER**  
 1.0m SINGLE FACED

SHEET 6 OF 8  
**857D01**

STATE OF  
 NORTH CAROLINA  
 DEPT. OF TRANSPORTATION  
 DIVISION OF HIGHWAYS  
 RALEIGH, N.C.

METRIC DETAIL DRAWING FOR  
**PRECAST REINFORCED  
 CONCRETE BARRIER**  
 1.0m SINGLE FACED

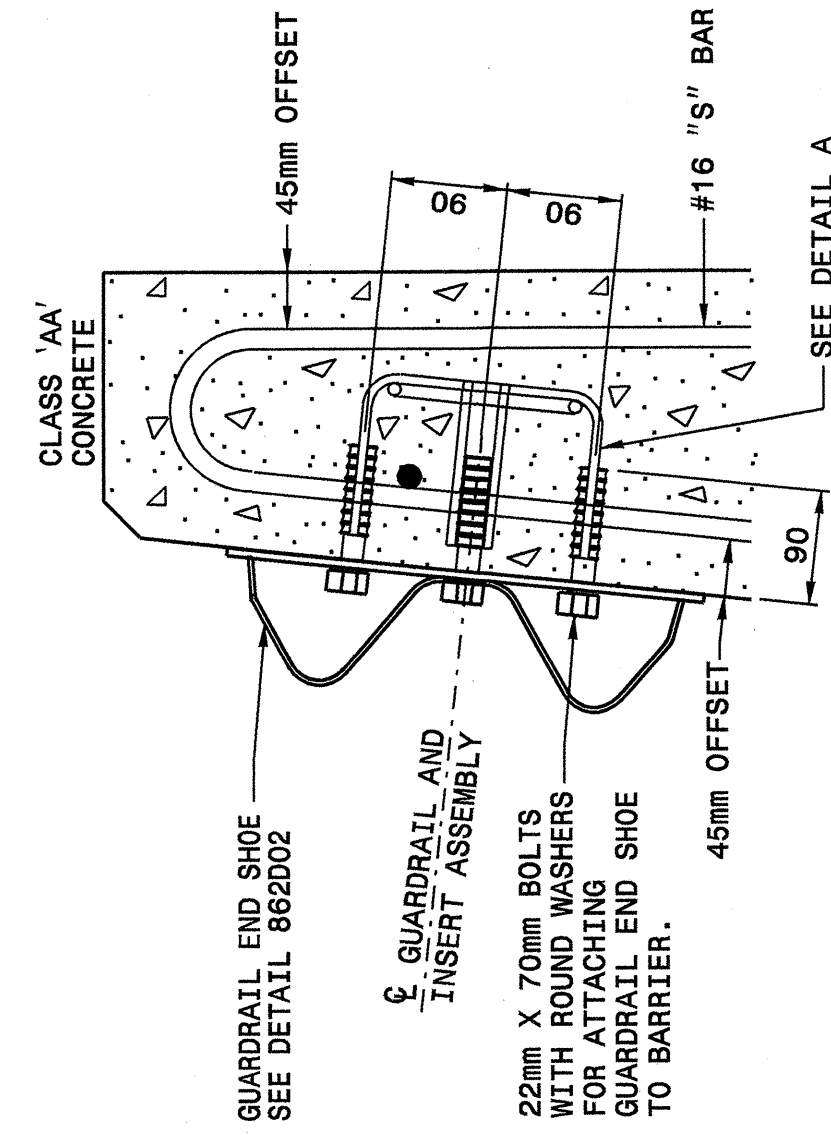
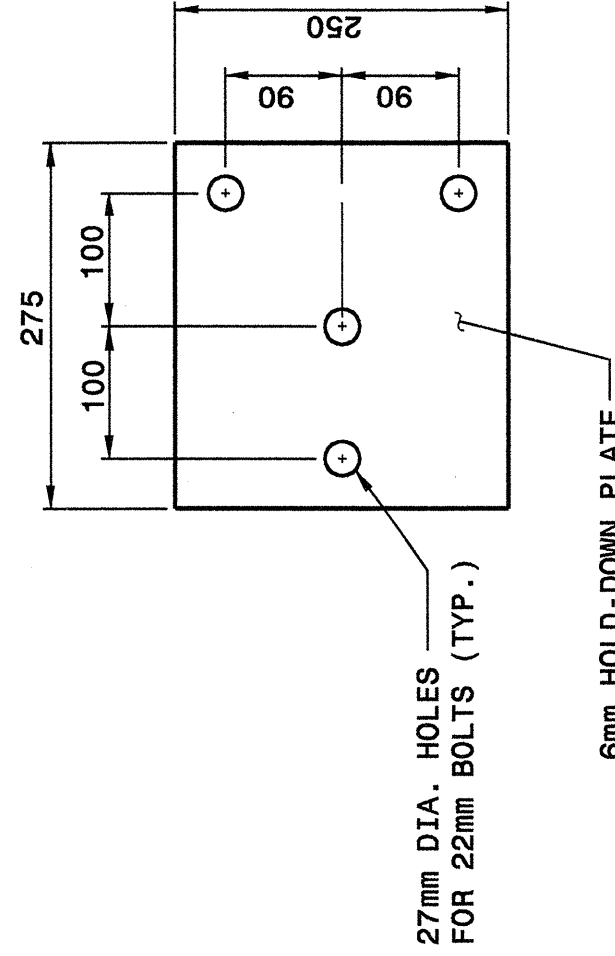
SHEET 6 OF 8  
**857D01**



**DETAIL A  
 4 BOLT INSERT ASSEMBLY**

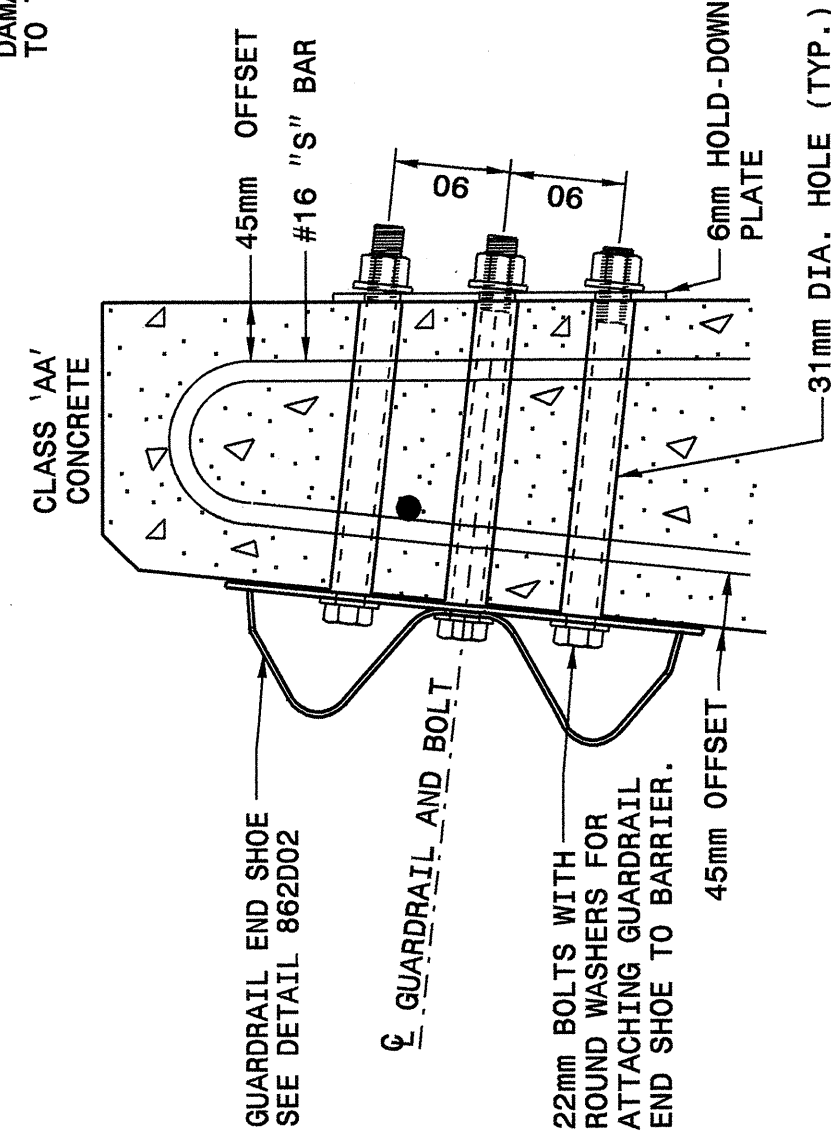
**DETAIL B  
 4 BOLT HOLD DOWN PLATE**

**NOTES FOR 4 BOLT HOLD DOWN PLATE**  
 THE GUARDRAIL ANCHOR ASSEMBLY SHALL CONSIST OF A 6mm HOLD DOWN PLATE AND 4 - 22mm DIA. BOLTS WITH NUTS AND WASHERS.  
 THE HOLD-DOWN PLATE SHALL CONFORM TO AASHTO M270 GRADE 56 AFTER FABRICATION, THE HOLD-DOWN PLATE SHALL BE HOT-DIP GALVANIZED IN ACCORDANCE WITH AASHTO M111.  
 AFTER INSTALLATION, THE EXPOSED THREAD OF THE BOLT SHALL BE BURRED WITH A SHARP POINTED TOOL.  
 THE 31mm DIA. HOLES SHALL BE FORMED OR DRILLED WITH A CORE BIT. ANY TOOLS DAMAGED BY THIS WORK SHALL BE REPAIRED TO THE SATISFACTION OF THE ENGINEER.



**PART SECTION  
 OF BARRIER  
 THRU END SHOE SECTION AND  
 4 BOLT INSERT ASSEMBLY**

**Note:**  
 This drawing is dimensioned in  
 millimeters unless otherwise  
 depicted within the drawing.



**PART SECTION  
 OF BARRIER  
 THRU END SHOE SECTION AND  
 4 BOLT HOLD DOWN PLATE**

**DESIGN SERVICES UNIT  
 STANDARDS AND SPECIAL DESIGN**  
 Office 919-250-4128 FAX 919-250-4119

**SEE PLATE FOR TITLE**

ORIGINAL BY: 2002 STD.857.01 DATE: 4-07-04  
 MODIFIED BY: E.E. WARD DATE: 4-12-04  
 CHECKED BY: C.B. WARD DATE: 4-12-04  
 FILE SPEC.: /usr/stds/02tdetail/metric/85701/857d01m.dgn

