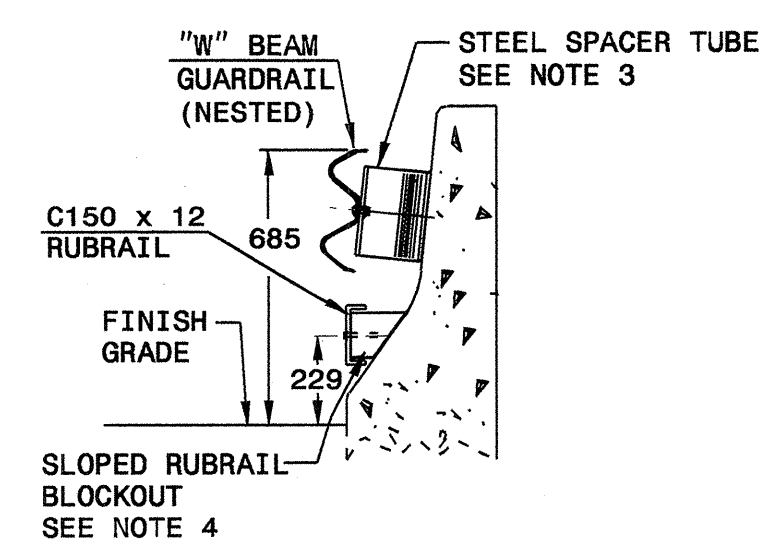
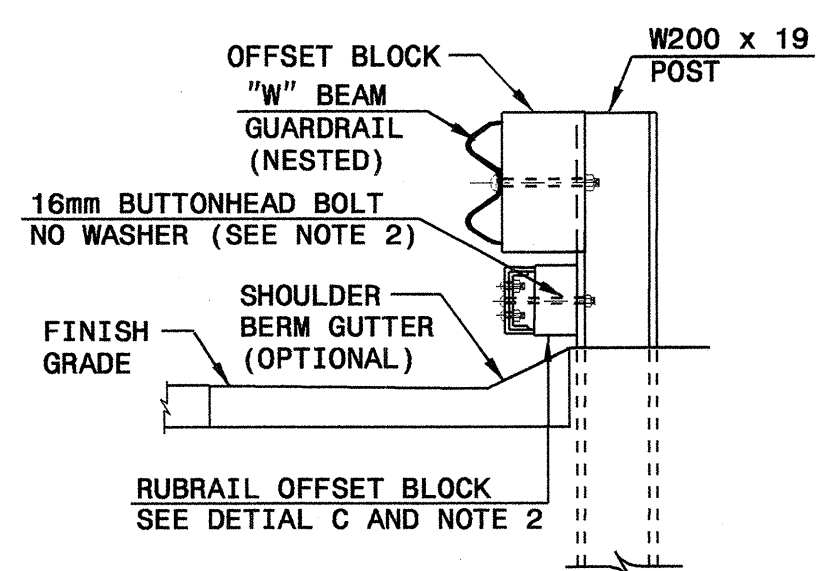


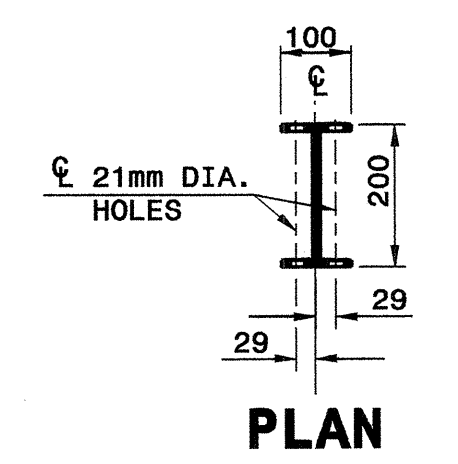
SECTION A-A



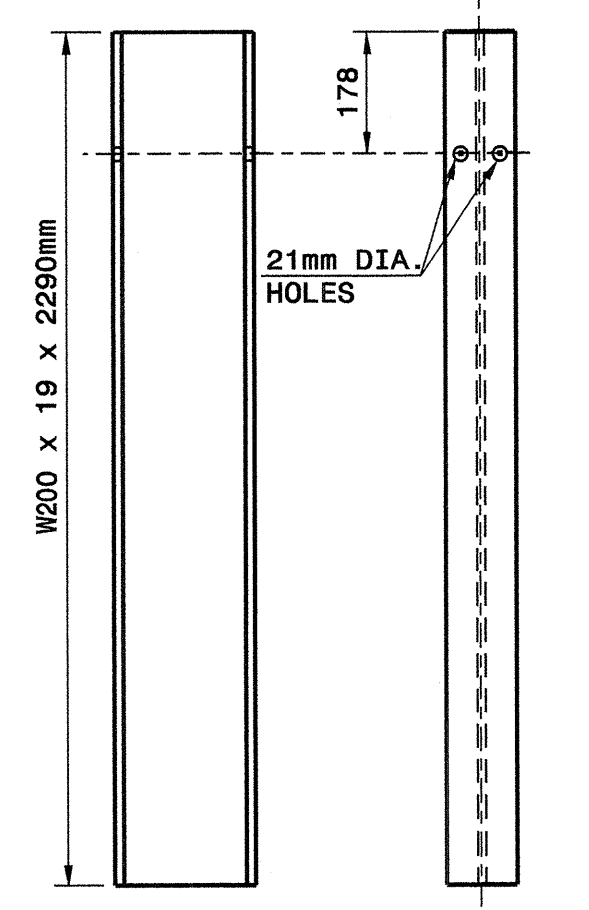
SECTION B-B



SECTION C-C

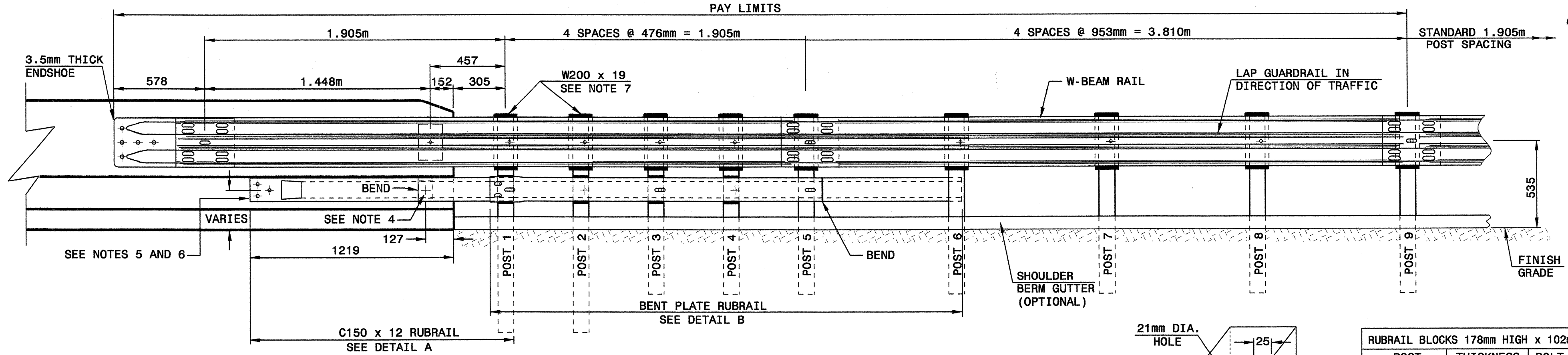


PLAN

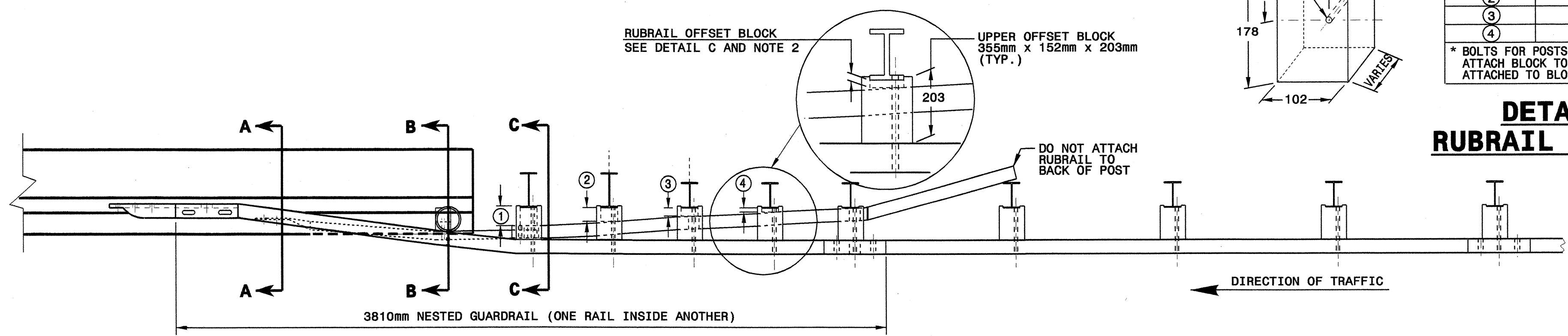


SIDE FRONT
DETAIL F

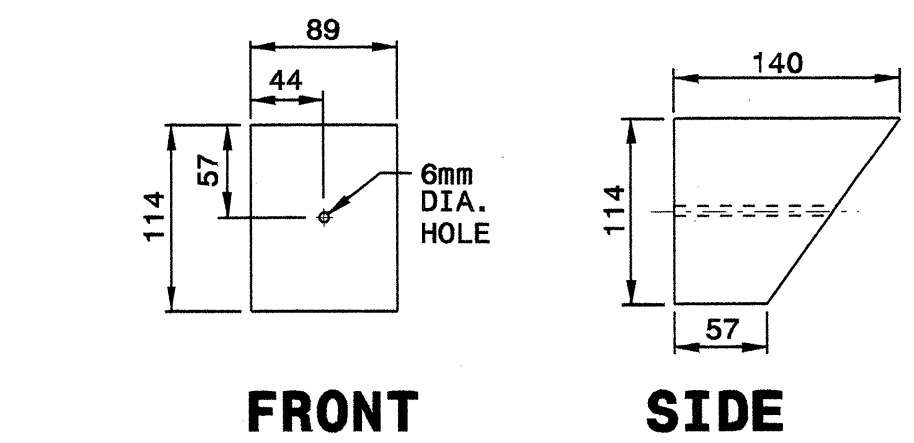
"W200 X 19 X 2290mm STEEL POST



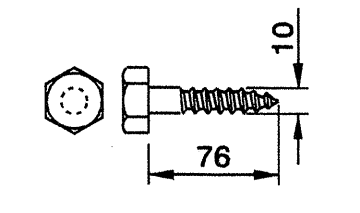
ELEVATION



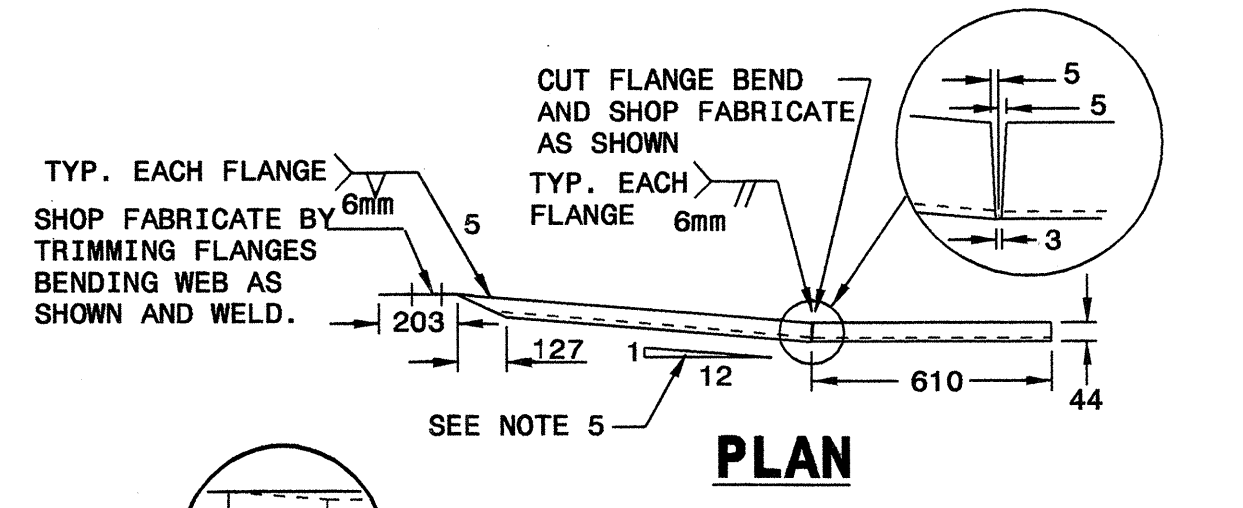
PLAN



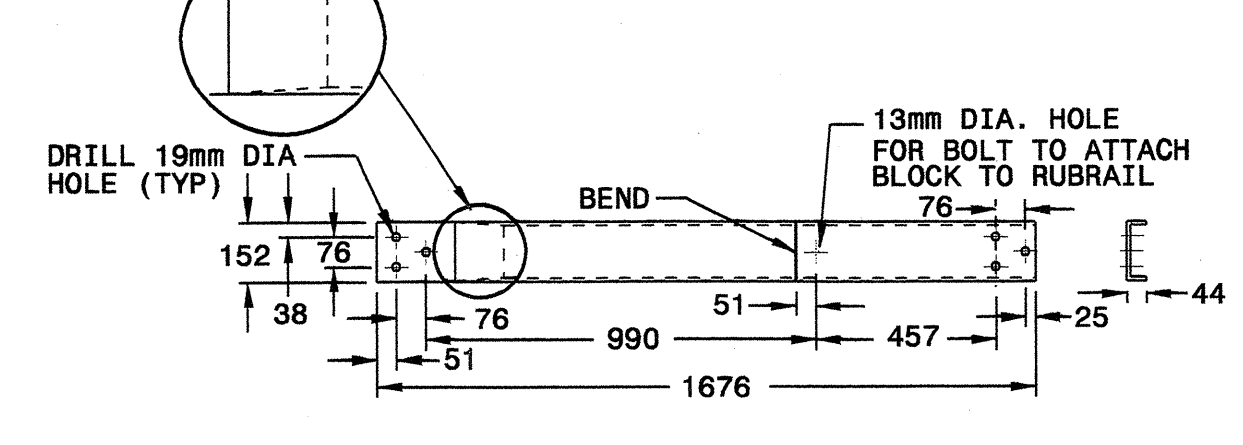
FRONT SIDE
DETAIL D
SLOPED RUBRAIL BLOCKOUT



DETAIL E
LAG BOLT

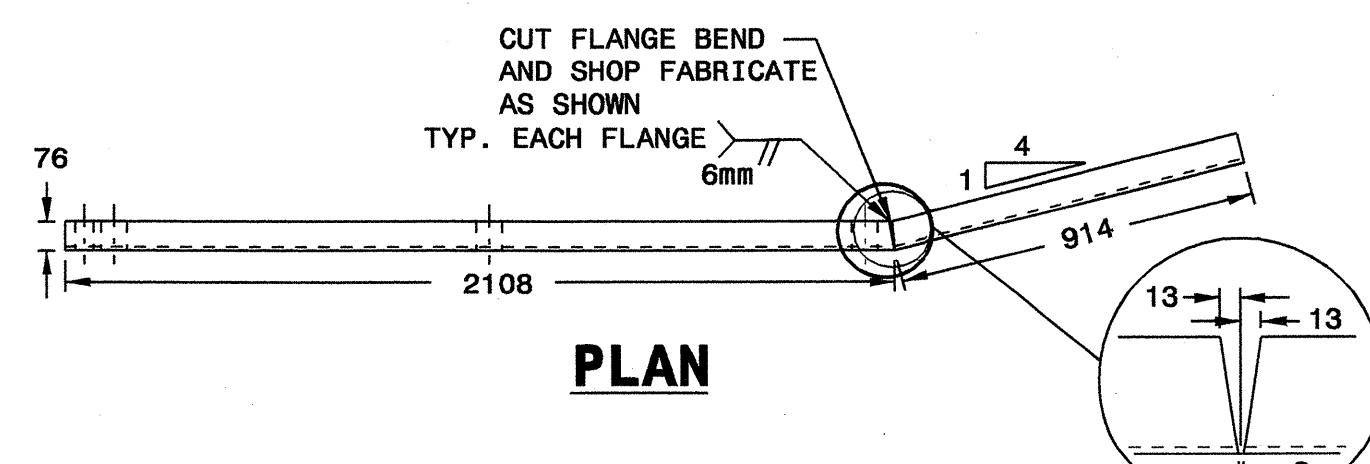


PLAN

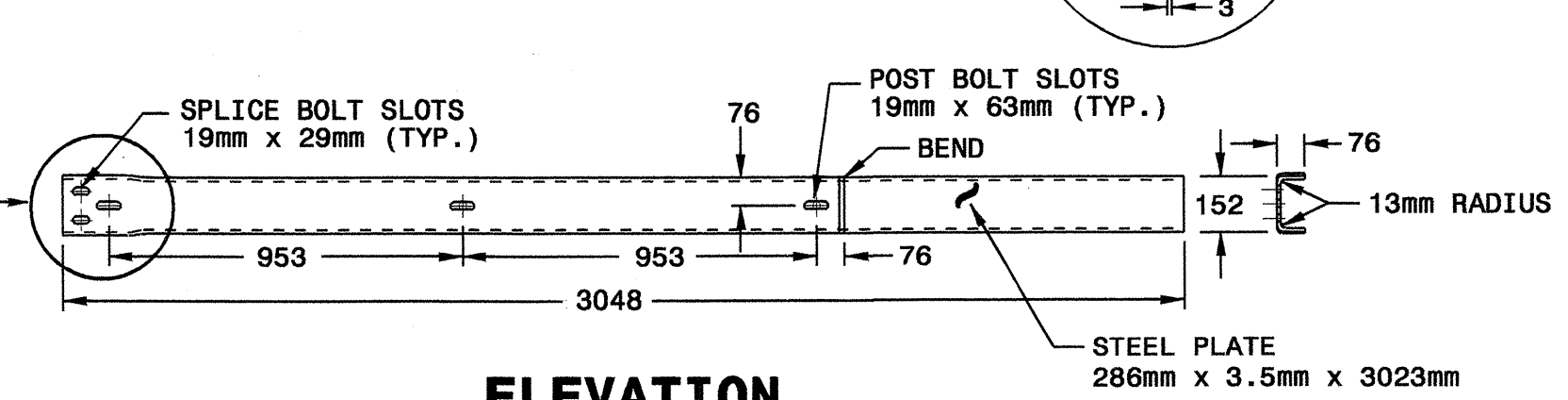


ELEVATION

DETAIL A
C150 X 12 RUBRAIL

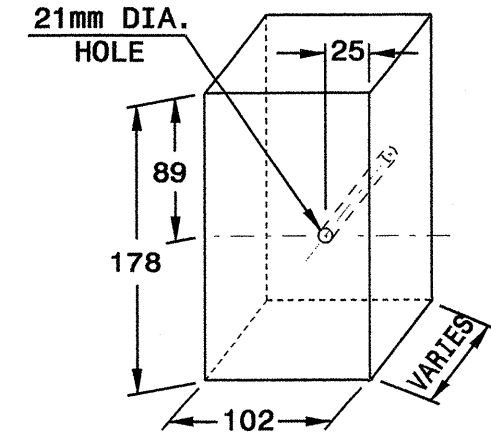


PLAN



ELEVATION

DETAIL B
BENT PLATE RUBRAIL

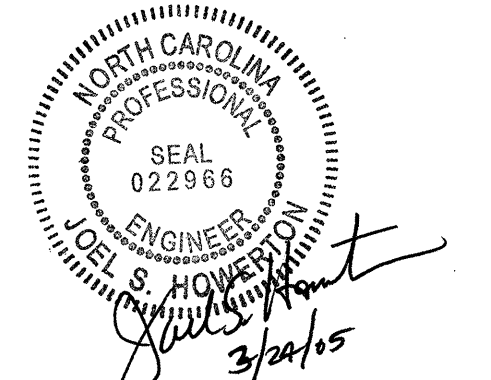


POST	THICKNESS	BOLT LENGTH
①	108	229
②	83	127 *
③	51	152
④	25	76 *

* BOLTS FOR POSTS 2 AND 4 ARE USED TO ATTACH BLOCK TO POST. RUBRAIL NOT ATTACHED TO BLOCK.

DETAIL C
RUBRAIL BLOCKOUT

- GENERAL NOTES:**
- POSTS 1 THROUGH 5 REQUIRE AN ADDITIONAL HOLE TO ATTACH LOWER BLOCKOUTS AND/OR RUBRAIL.
 - RUBRAIL BLOCKOUTS LOCATED ON POSTS 1 THROUGH 4 ARE OFFSET DRILLED AND SECURED WITH 16mm BUTTONHEAD BOLTS (SEE CHART FOR BOLT LENGTHS). SECURE BLOCKS ONLY TO POSTS 2 AND 4. SECURE RUBRAIL AND BLOCKOUTS TO POSTS 1 AND 3. RUBRAIL IS SECURED TO POST 5 WITH A 16mm x 114mm BUTTONHEAD BOLT. RUBRAIL IS FLARED TO BACK OF POST 6 AND NOT SECURED.
 - STEEL SPACER TUBE IS A SCHEDULE 40 GALVANIZED PIPE 152mm INSIDE DIAMETER x 229mm LONG. ATTACH TUBE TO GUARDRAIL ONLY WITH 16mm x 32mm LONG BUTTONHEAD BOLT AND RECTANGULAR PLATE WASHER.
 - SEE DETAIL D FOR SLOPED RUBRAIL BLOCKOUT. BLOCKOUT IS ATTACHED TO RAIL ELEMENT ONLY. USE 10mm x 76mm LAG BOLT WITH FLAT WASHER.
 - SHOP FABRICATE THE C150x12 RUBRAIL END TO BE CONSISTENT WITH THE SLOPE OF THE JERSEY SHAPE AND ATTACH FLUSH WITH THE SLOPED TOE OF THE BARRIER OR BRIDGE RAIL.
 - ANCHORAGE:
 - AT EXISTING BRIDGE RAIL AND NEW OR EXISTING BARRIERS, RUBRAIL SHALL BE ANCHORED USING THREE 16mm x 152mm CHEMICALLY ANCHORED BOLTS WITH WASHERS.
 - AT EXISTING BRIDGE RAIL AND NEW OR EXISTING BARRIERS, THE W-BEAM END SHOE SHALL BE ANCHORED USING A 4 BOLT HOLD-DOWN PLATE AS SHOWN ON DETAIL 857D01 SHEET 6. A 4 BOLT INSERT ASSEMBLY IS ALLOWED ON PRECAST REINFORCED CONCRETE BARRIER (857D01). THE W-BEAM END SHOE SHALL BE INSTALLED BEHIND THE NESTED W-BEAM ELEMENTS.
 - AT NEW BRIDGE RAIL, THE W-BEAM END SHOE AND RUBRAIL SHALL BE ANCHORED AS DETAILED ON THE STRUCTURE PLANS.
 - POSTS 1 AND 2 ARE W200 x 19, 2290mm LONG. ALL OTHER POSTS IN THE ANCHOR UNIT ARE W150 x 13.5.



Note: This drawing is dimensioned in millimeters unless otherwise depicted within the drawing.

DESIGN SERVICES UNIT
STANDARDS AND SPECIAL DESIGN
Office 919-250-4128 FAX 919-250-4119

GUARDRAIL ANCHOR UNIT
TYPE B-77

ORIGINAL BY: CONNDOT DATE: 10-01-00
 MODIFIED BY: E. E. WARD DATE: 04-07-04
 CHECKED BY: C. B. Perry DATE: 4-12-04
 FILE SPEC.:

08-APP-2004-1136
 W:\Spec\04\Det\04\guardrail\Misc_guardrail\NC\HRP350_Approved\B-77_Conndot.dwg
 05/21/2004
 AT 10:52:26 AM