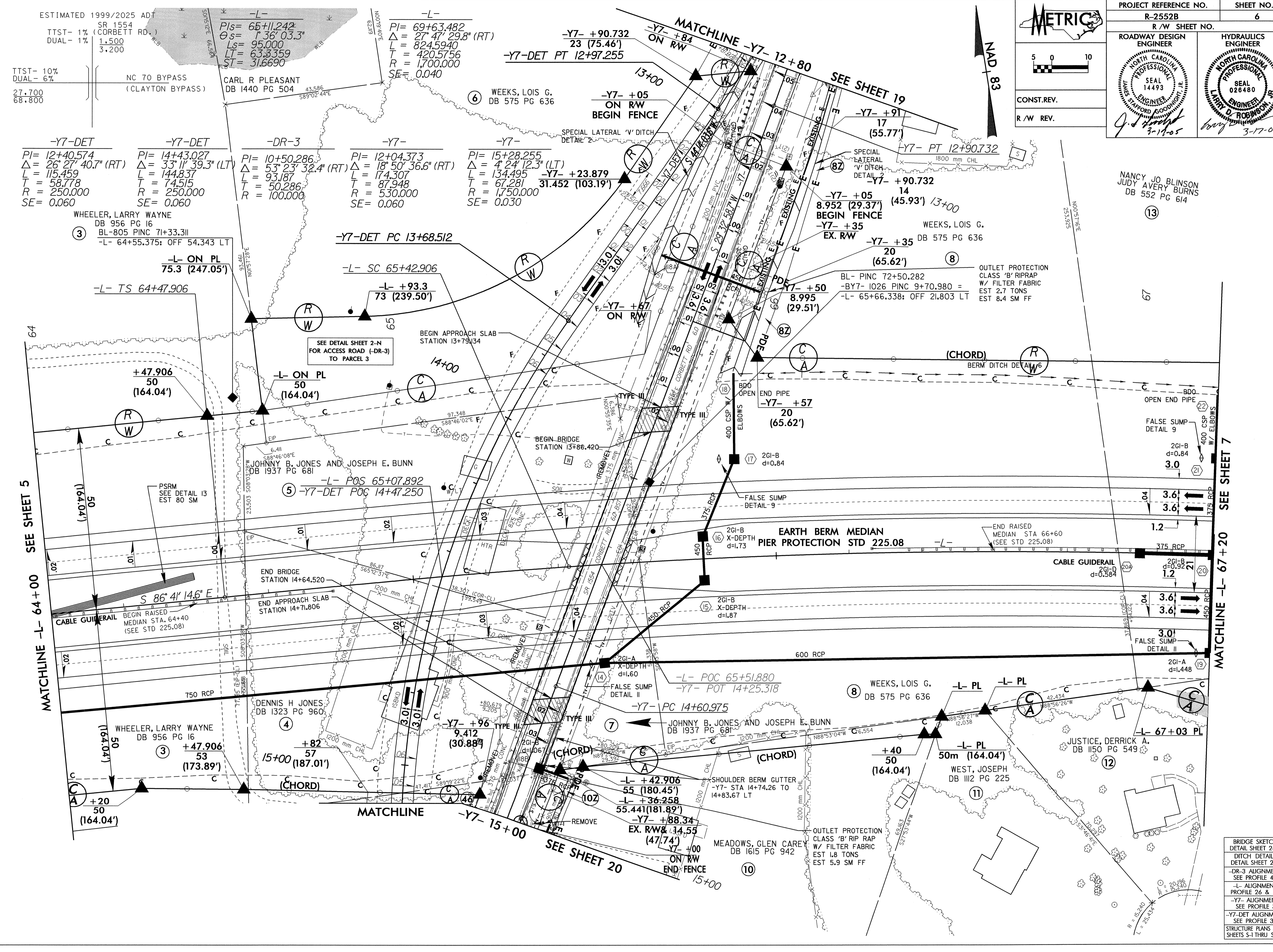


6/10/99
10-MAR-05 10:01 AM AT RD206435.dwg
MBLetchworth



ESTIMATED 1999/2025 ADT
SR 1554
TTST- 1% (CORBETT RD.)
DUAL- 1%
1.500
3.200
TTST- 10%
DUAL- 6%
27.700
68.800

-Y7-DET
PI= 12+40.574
Δ = 26° 27' 40.7" (RT)
L = 115.459
T = 58.778
R = 250.000
SE = 0.060

-Y7-DET
PI= 14+43.027
Δ = 33° 11' 39.3" (LT)
L = 144.837
T = 74.515
R = 250.000
SE = 0.060

-DR-3
PI= 10+50.286
Δ = 53° 23' 32.4" (RT)
L = 93.187
T = 50.286
R = 100.000

-Y7-
PI= 12+04.373
Δ = 18° 50' 36.6" (RT)
L = 174.307
T = 87.948
R = 530.000
SE = 0.060

-Y7-
PI= 15+28.255
Δ = 4° 24' 12.3" (LT)
L = 134.495
T = 67.281
R = 1,750.000
SE = 0.030

-Y7- +90.732
23 (75.46')
-Y7-DET PT 12+97.255

-Y7- +84
ON RW
-Y7- +91
17 (55.77')

-Y7- PT 12+90.732
-Y7- +90.732
14 (45.93') 13+00

-Y7- +05
8.952 (29.37')
-Y7- +35
EX. RW
-Y7- +35
20 (65.62')

-Y7- +50
8.995 (29.51')

-Y7- +57
20 (65.62')

WHEELER, LARRY WAYNE
DB 956 PG 16
BL-805 PINC 7+33.311
-L- 64+55.375; OFF 54.343 LT
-L- ON PL
75.3 (247.05')

-L- TS 64+47.906

-L- SC 65+42.906

-L- +93.3
73 (239.50')

-L- ON PL
50 (164.04')

-L- POS 65+07.892
-Y7-DET POS 14+47.250

-L- POC 65+51.880
-Y7- POT 14+25.318

-Y7- PC 14+60.975

-Y7- +96
9.412 (30.88')

-L- +42.906
55 (180.45')
-L- +36.258
55.441 (181.89')
-Y7- +88.34
EX. RW & 14.55 (47.74')

-L- ON PL
50 (164.04')

-L- POS 65+07.892

-L- ON PL
50 (164.04')

-L- POS 65+07.892

-L- POS 65+07.892

-L- POS 65+07.892

-L- POS 65+07.892

-L- POS 65+07.892

-L- POS 65+07.892

-L- POS 65+07.892

-L- ON PL
50 (164.04')

-L- ON PL
50 (164.04')

-L- ON PL
50 (164.04')

-L- ON PL
50 (164.04')

-L- ON PL
50 (164.04')

-L- ON PL
50 (164.04')

-L- ON PL
50 (164.04')

-L- ON PL
50 (164.04')

-L- ON PL
50 (164.04')

-L- ON PL
50 (164.04')

-L- ON PL
50 (164.04')

-L- ON PL
50 (164.04')

-L- ON PL
50 (164.04')

-L- ON PL
50 (164.04')

-L- ON PL
50 (164.04')

-L- ON PL
50 (164.04')

-L- ON PL
50 (164.04')

-L- ON PL
50 (164.04')

-L- ON PL
50 (164.04')

-L- ON PL
50 (164.04')

-L- ON PL
50 (164.04')

-L- ON PL
50 (164.04')

-L- ON PL
50 (164.04')

-L- ON PL
50 (164.04')

-L- ON PL
50 (164.04')

-L- ON PL
50 (164.04')

-L- ON PL
50 (164.04')

-L- ON PL
50 (164.04')

-L- ON PL
50 (164.04')

-L- ON PL
50 (164.04')

-L- ON PL
50 (164.04')

-L- ON PL
50 (164.04')

-L- ON PL
50 (164.04')

-L- ON PL
50 (164.04')

-L- ON PL
50 (164.04')

-L- ON PL
50 (164.04')

-L- ON PL
50 (164.04')

-L- ON PL
50 (164.04')

-L- ON PL
50 (164.04')

-L- ON PL
50 (164.04')

-L- ON PL
50 (164.04')

-L- ON PL
50 (164.04')

-L- ON PL
50 (164.04')

-L- ON PL
50 (164.04')

-L- ON PL
50 (164.04')

-L- ON PL
50 (164.04')

-L- ON PL
50 (164.04')

-L- ON PL
50 (164.04')

-L- ON PL
50 (164.04')

-L- ON PL
50 (164.04')

-L- ON PL
50 (164.04')

-L- ON PL
50 (164.04')

-L- ON PL
50 (164.04')

-L- ON PL
50 (164.04')

-L- ON PL
50 (164.04')

-L- ON PL
50 (164.04')

-L- ON PL
50 (164.04')

-L- ON PL
50 (164.04')

-L- ON PL
50 (164.04')

-L- ON PL
50 (164.04')

-L- ON PL
50 (164.04')

-L- ON PL
50 (164.04')

-L- ON PL
50 (164.04')

-L- ON PL
50 (164.04')

-L- ON PL
50 (164.04')

-L- ON PL
50 (164.04')

-L- ON PL
50 (164.04')

-L- ON PL
50 (164.04')

-L- ON PL
50 (164.04')

-L- ON PL
50 (164.04')

MATCHLINE -L- 64+00 SEE SHEET 5
MATCHLINE -Y7- 12+80
MATCHLINE -L- 67+20 SEE SHEET 7
MATCHLINE -Y7- 15+00 SEE SHEET 20

METRIC
5 0 10
CONST. REV.
R/W REV.

PROJECT REFERENCE NO. R-2552B
SHEET NO. 6
R/W SHEET NO.

ROADWAY DESIGN ENGINEER
HYDRAULICS ENGINEER

NORTH CAROLINA PROFESSIONAL ENGINEER
SEAL 14493
JAMES STAFFORD BOODEN
3-17-05

NORTH CAROLINA PROFESSIONAL ENGINEER
SEAL 026480
LARRY D. ROBINSON
3-17-05

NANCY JO BLINSON
JUDY AVERY BURNS
DB 552 PG 614

- BRIDGE SKETCH
DETAIL SHEET 2-O
- DITCH DETAILS
DETAIL SHEET 2-F
- DR-3 ALIGNMENT
SEE PROFILE 46
- L- ALIGNMENT
PROFILE 26 & 27
- Y7- ALIGNMENT
SEE PROFILE 36
- Y7-DET ALIGNMENT
SEE PROFILE 37
- STRUCTURE PLANS SEE
SHEETS S-1 THRU S-30