
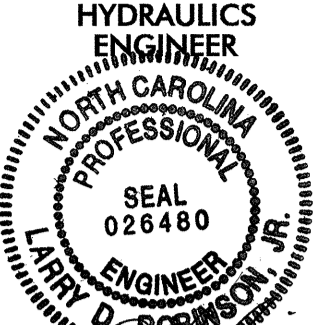
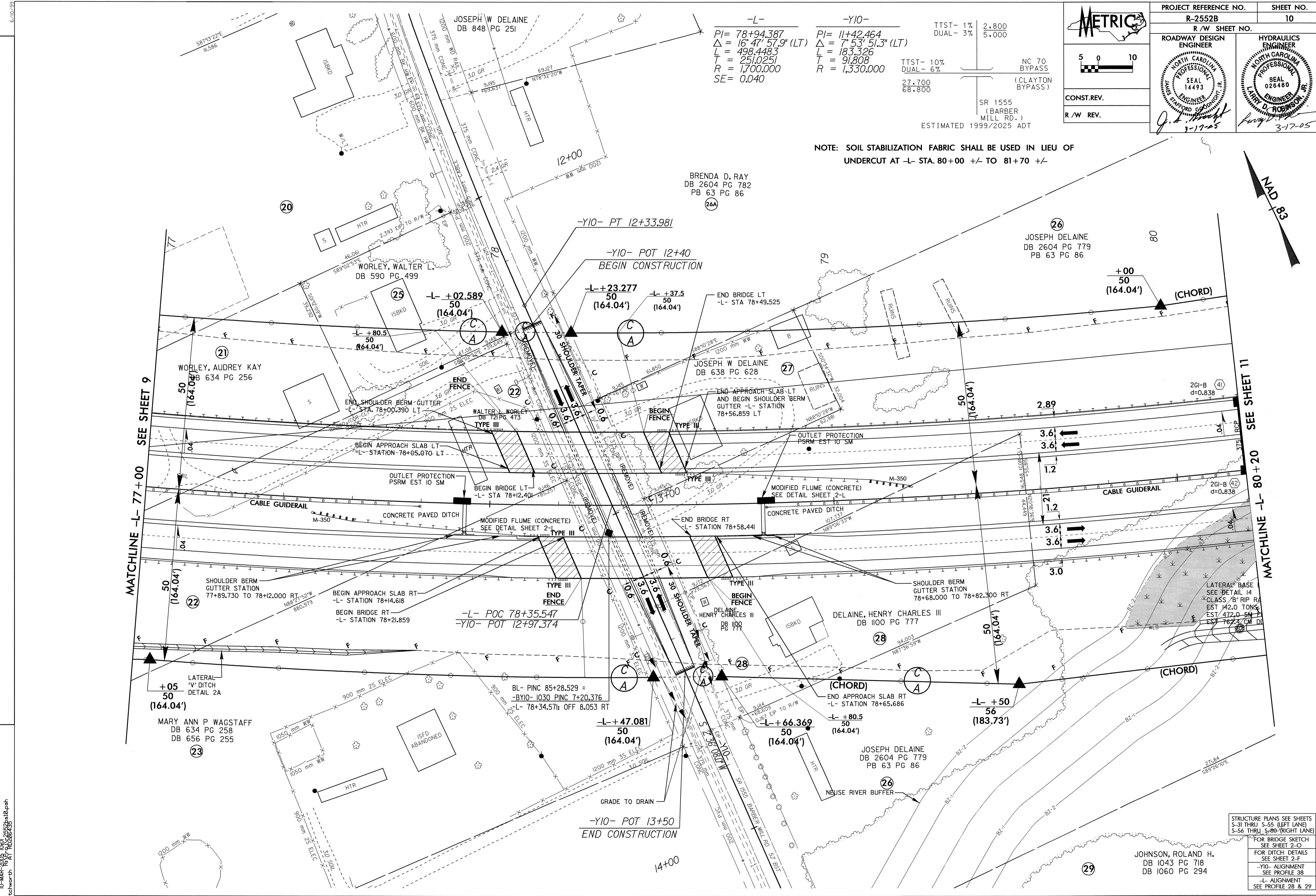
 5 0 10	PROJECT REFERENCE NO. R-2552B	SHEET NO. 10
	R/W SHEET NO.	
CONST. REV.	ROADWAY DESIGN ENGINEER  J. D. Smith 3-17-05	HYDRAULICS ENGINEER  L. D. Robinson 3-17-05
R/W REV.	TTST- 1% DUAL- 3% 2.800 5.000 TTST- 10% DUAL- 6% 27.700 68.800 NC 70 BYPASS (CLAYTON BYPASS) SR 1555 (BARBER MILL RD.) ESTIMATED 1999/2025 ADT	

-L-
 PI= 78+94.387
 Δ = 16° 47' 57.9" (LT)
 L = 498.4483
 T = 251.0251
 R = 1,700.000
 SE = 0.040

-Y10-
 PI= 11+42.464
 Δ = 7° 53' 51.3" (LT)
 L = 183.326
 T = 91.808
 R = 1,330.000

NOTE: SOIL STABILIZATION FABRIC SHALL BE USED IN LIEU OF UNDERCUT AT -L- STA. 80+00 +/- TO 81+70 +/-



REVISIONS

SEE SHEET 11

MATCHLINE -L- 80+20

STRUCTURE PLANS SEE SHEETS S-31 THRU S-55 (LEFT LANE) S-56 THRU S-80 (RIGHT LANE)
 FOR BRIDGE SKETCH SEE SHEET 2-O
 FOR DITCH DETAILS SEE SHEET 2-F
 -Y10- ALIGNMENT SEE PROFILE 3B
 -L- ALIGNMENT SEE PROFILE 2B & 29

JOHNSON, ROLAND H.
 DB 1043 PG 718
 DB 1060 PG 294

10-MAR-2005 10:51 AM R-2552B-10.dwg
 MBLetchworth rd-04occe34