
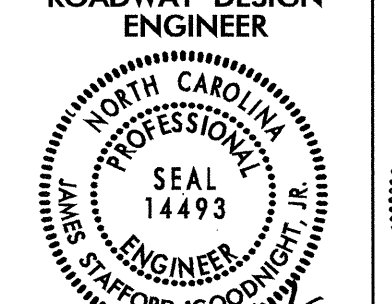
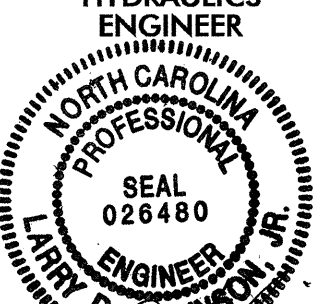


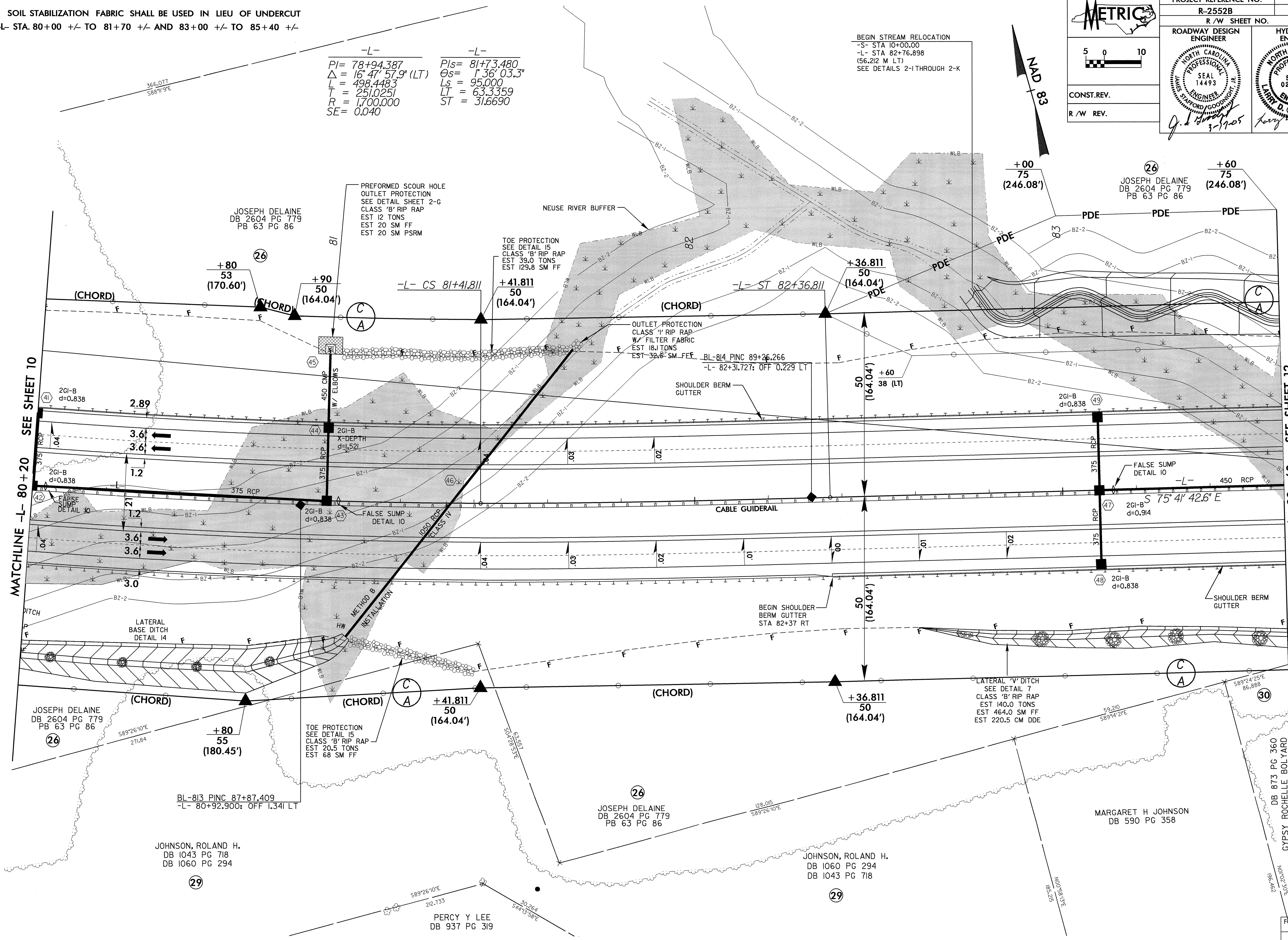
NOTE: SOIL STABILIZATION FABRIC SHALL BE USED IN LIEU OF UNDERCUT
 AT -L- STA. 80+00 +/- TO 81+70 +/- AND 83+00 +/- TO 85+40 +/-

-L-
 $Pi = 78+94.387$
 $\Delta = 16' 47'' 57.9'' (LT)$
 $L = 498.4483$
 $R = 251,0251$
 $SE = 0.040$

-L-
 $Pis = 81+73.480$
 $\Theta s = 1' 36'' 03.3''$
 $Ls = 95.000$
 $LI = 63.3359$
 $ST = 31.6690$

BEGIN STREAM RELOCATION
 -S- STA 10+00.00
 -L- STA 82+76.898
 (56.212 M LT)
 SEE DETAILS 2-I THROUGH 2-K

 5 0 10 CONST. REV. R / W REV.	PROJECT REFERENCE NO. R-2552B	SHEET NO. 11
	ROADWAY DESIGN ENGINEER  SEAL 14493 3-17-05	HYDRAULICS ENGINEER  SEAL 026480 3-17-05



REVISIONS

10-MAR-2005 09:01 2552b11-upsh
 MBLetchworth

FOR DITCH DETAILS
 SEE SHEET 2-F
 -L- ALIGNMENT
 SEE PROFILE 29