

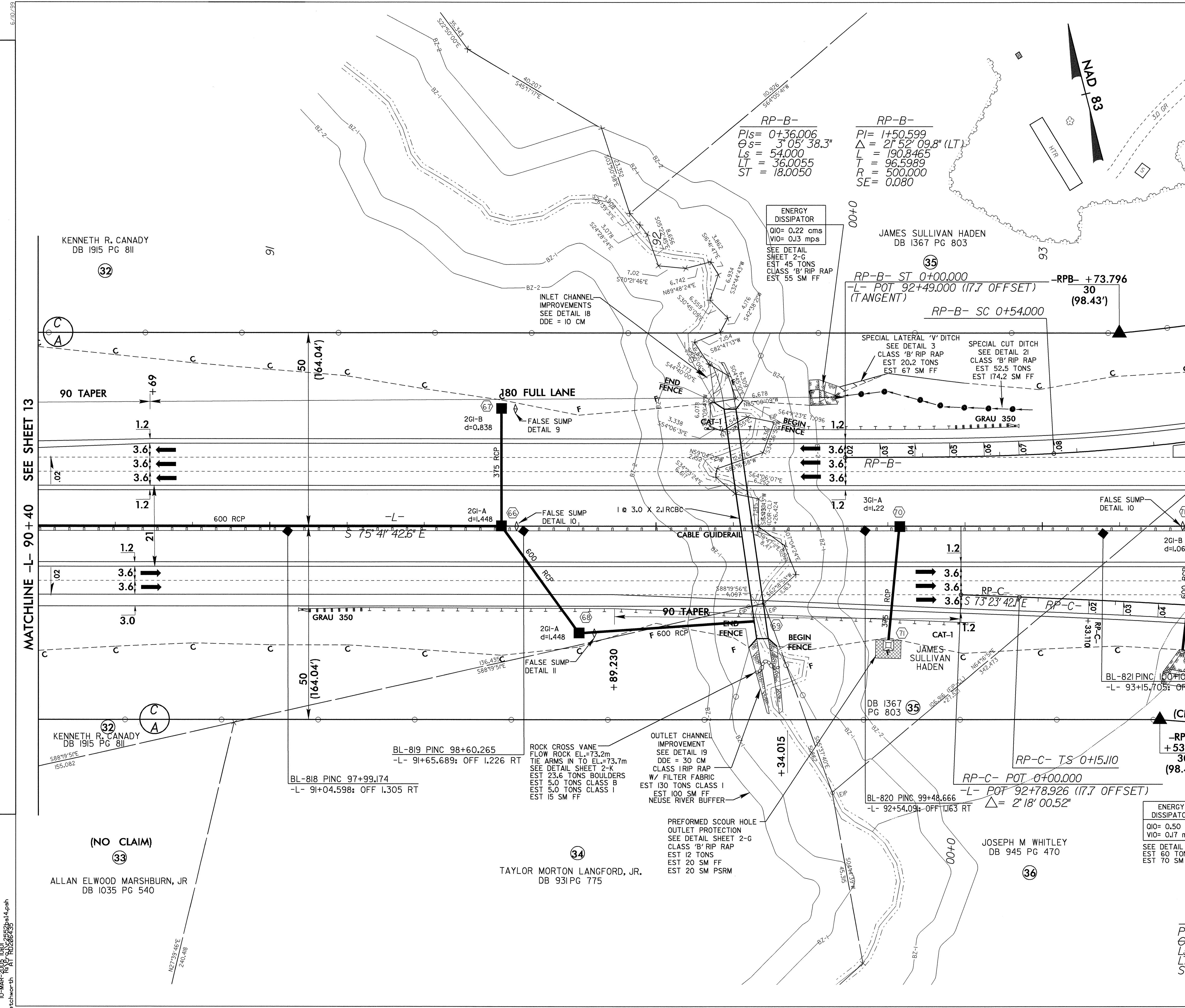
METRIC

PROJECT REFERENCE NO. R-2552B SHEET NO. 14
R/W SHEET NO.

ROADWAY DESIGN ENGINEER
NORTH CAROLINA PROFESSIONAL SEAL 14493
STAFFORD GOODENOUGH, JR.
7-18-05

HYDRAULICS ENGINEER
NORTH CAROLINA PROFESSIONAL SEAL 026480
LARRY D. ROBINSON
3-17-05

CONST. REV.
R/W REV.



RP-B-
PIs= 0+36.006
θs= 3° 05' 38.3"
Ls= 54.000
LT= 36.0055
ST= 18.0050

RP-B-
PI= 1+50.599
Δ= 2° 52' 09.8" (LT)
L= 190.8465
T= 96.5989
R= 500.000
SE= 0.080

ENERGY DISSIPATOR
Q10= 0.50 cms
V10= 0.17 mps
SEE DETAIL SHEET 2-G
EST 60 TONS CLASS 'B' RIP RAP
EST 70 SM FF

RP-C-
PIs= 0+63.119
θs= 3° 26' 15.9"
Ls= 72.000
LT= 48.009
ST= 24.008

CULVERT DETAILS SEE SHEETS C-1 THRU C-16
FOR DITCH DETAILS SEE SHEET 2-F
-RP-A ALIGNMENT SEE PROFILE 42
-RP-B ALIGNMENT SEE PROFILE 42 & 43
-L- ALIGNMENT SEE PROFILE 30 & 31

REVISIONS

MATCHLINE -L- 90 + 40 SEE SHEET 13

MATCHLINE -L- 93 + 60 SEE SHEET 15

ID-MAR-2005 10:01 RD206435.dwg
R:R: MBLetchworth
AT RD206435