

METRIC

PROJECT REFERENCE NO. R-2552B SHEET NO. 22

R/W SHEET NO.

ROADWAY DESIGN ENGINEER: NORTH CAROLINA PROFESSIONAL SEAL 14493

HYDRAULICS ENGINEER: NORTH CAROLINA PROFESSIONAL SEAL 026480

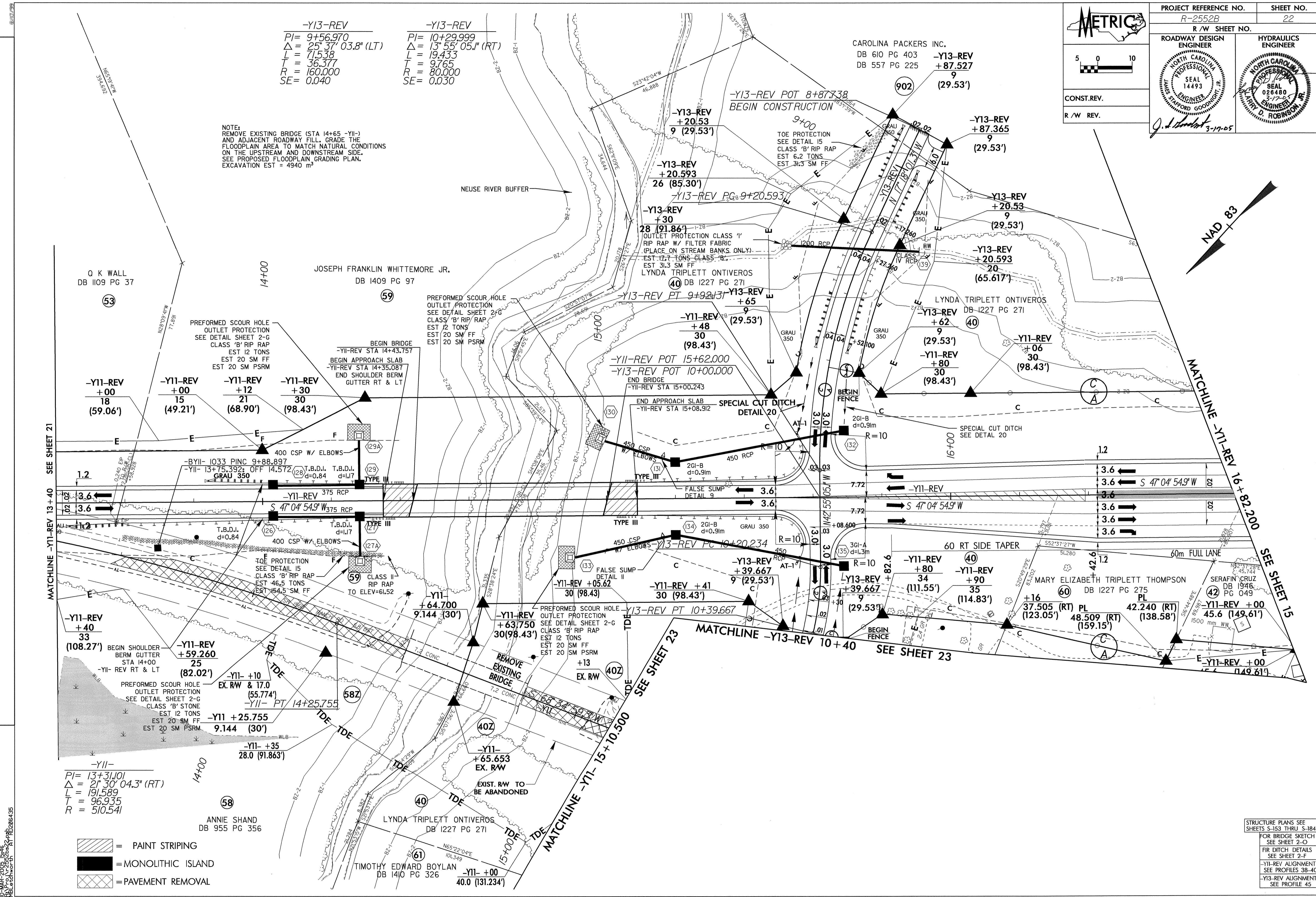
CONST. REV. R/W REV.

3-17-05

-Y13-REV
 $PI = 9+56.970$
 $\Delta = 25' 37" 03.8" (LT)$
 $L = 71.538$
 $R = 36.377$
 $R = 160.000$
 $SE = 0.040$

-Y13-REV
 $PI = 10+29.999$
 $\Delta = 13' 55" 05.1" (RT)$
 $L = 19.433$
 $T = 9.765$
 $R = 80.000$
 $SE = 0.030$

NOTE: REMOVE EXISTING BRIDGE (STA 14+65 -Y11-) AND ADJACENT ROADWAY FILL. GRADE THE FLOODPLAIN AREA TO MATCH NATURAL CONDITIONS ON THE UPSTREAM AND DOWNSTREAM SIDE. SEE PROPOSED FLOODPLAIN GRADING PLAN. EXCAVATION EST = 4940 m³



REVISIONS

- = PAINT STRIPING
- = MONOLITHIC ISLAND
- = PAVEMENT REMOVAL

STRUCTURE PLANS SEE SHEETS S-153 THRU S-184

FOR BRIDGE SKETCH SEE SHEET 2-O

FOR DITCH DETAILS SEE SHEET 2-F

-Y11-REV ALIGNMENT SEE PROFILES 38-40

-Y13-REV ALIGNMENT SEE PROFILE 45