

PROJECT REFERENCE NO. R-2552B SHEET NO. 24

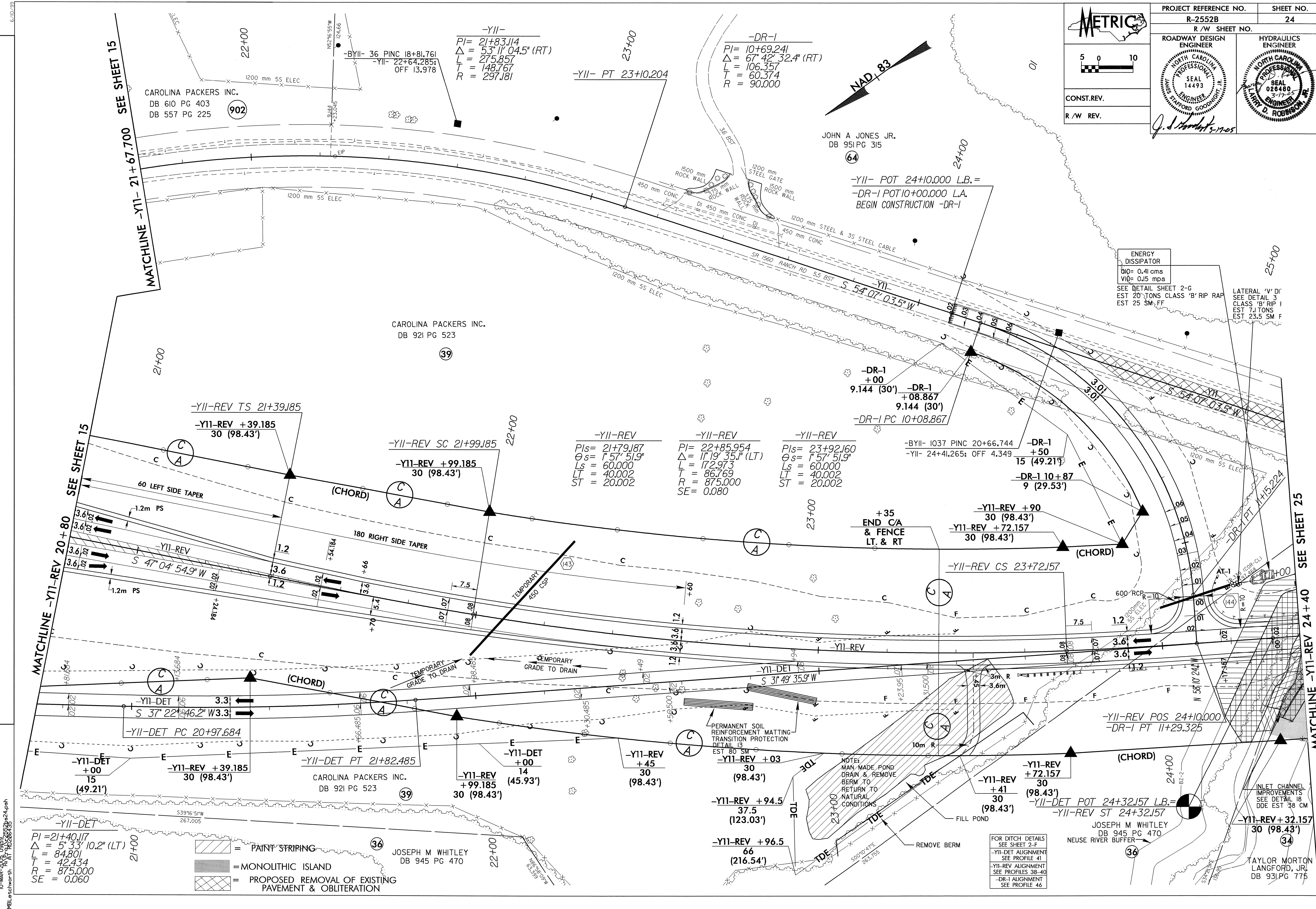
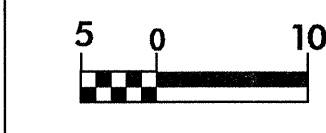
R/W SHEET NO.

ROADWAY DESIGN ENGINEER  
 NORTH CAROLINA PROFESSIONAL ENGINEER  
 SEAL 14493

HYDRAULICS ENGINEER  
 NORTH CAROLINA PROFESSIONAL ENGINEER  
 SEAL 024480  
 3-17-05  
 W. D. ROBINSON

CONST. REV.  
 R/W REV.

Q. J. [Signature] 3-17-05



10-MAR-2005 09:55  
 MBLetchworth rd-04oce34.psh  
 AT RD206435

-YII-DET  
 $PI = 21+40.17$   
 $\Delta = 53' 33'' 10.2''$  (LT)  
 $L = 84.801$   
 $T = 42.434$   
 $R = 875.000$   
 $SE = 0.060$

- = PAINT STRIPING
- = MONOLITHIC ISLAND
- = PROPOSED REMOVAL OF EXISTING PAVEMENT & OBLITERATION

FOR DITCH DETAILS  
 SEE SHEET 2-F  
 -YII-DET ALIGNMENT  
 SEE PROFILE 41  
 -YII-REV ALIGNMENT  
 SEE PROFILES 38-40  
 -DR-1 ALIGNMENT  
 SEE PROFILE 46

TAYLOR MORTON  
 LANGFORD, JR.  
 DB 931 PG 775