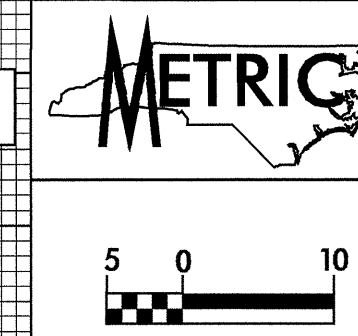
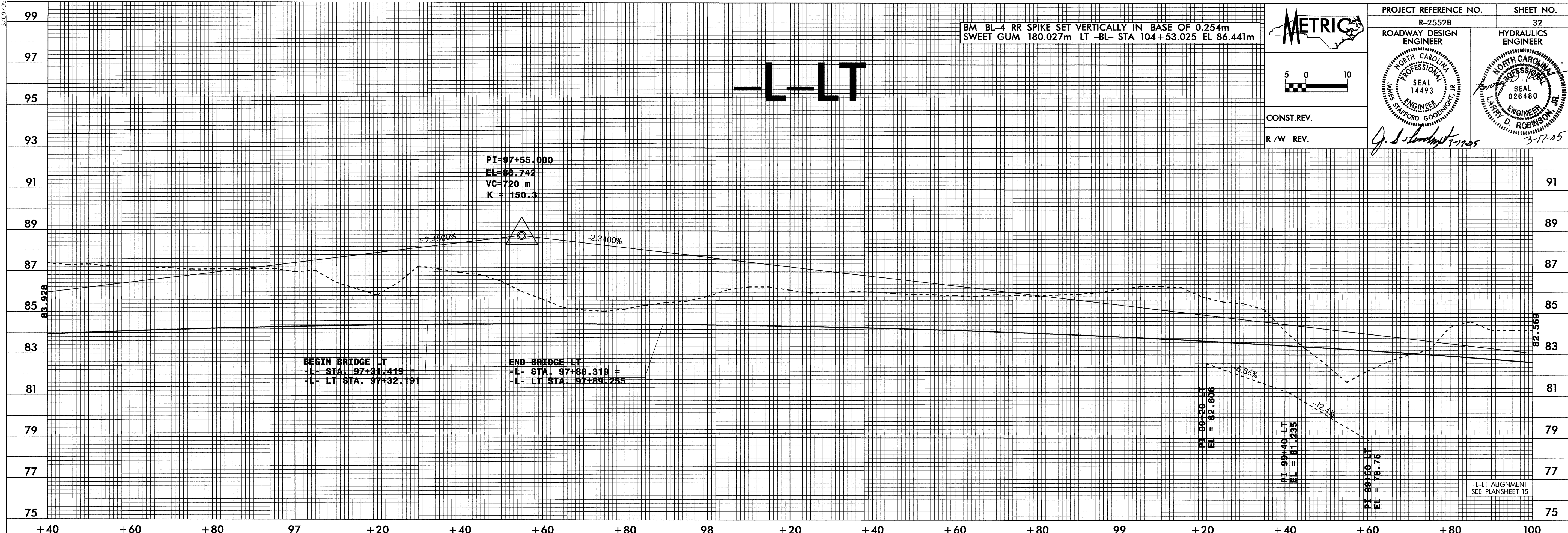


BM BL-4 RR SPIKE SET VERTICALLY IN BASE OF 0.254m
SWEET GUM 180.027m LT-BL- STA 104+53.025 EL 86.441m

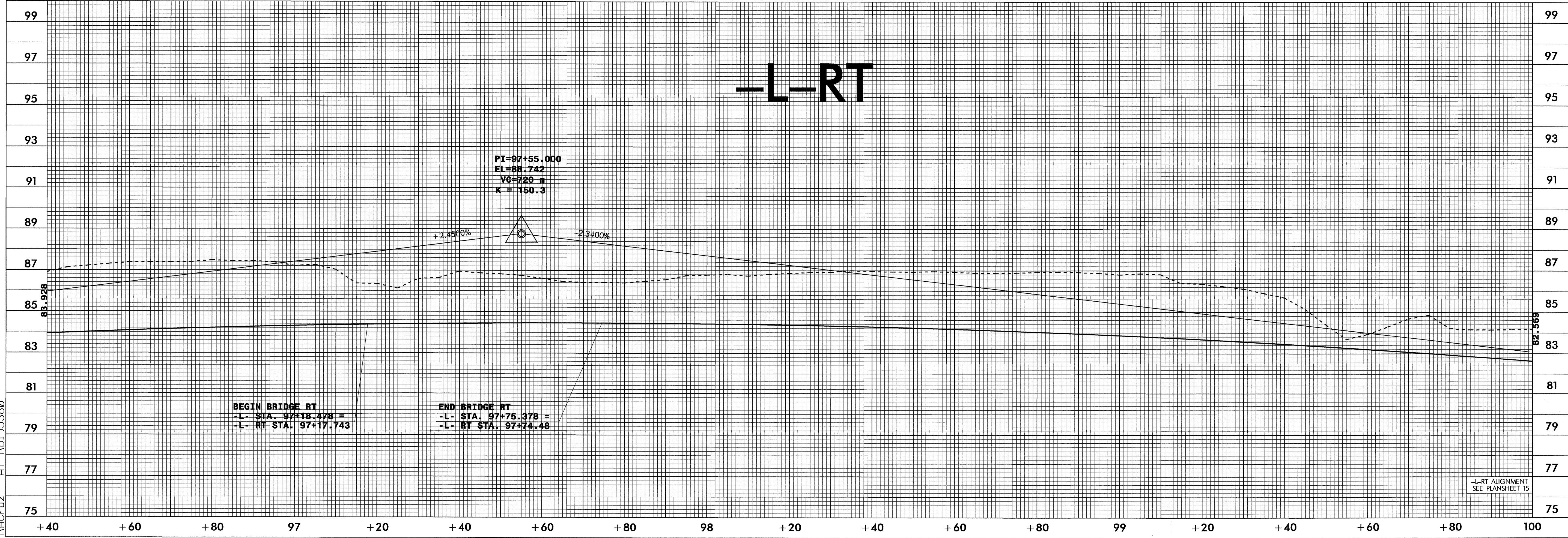


PROJECT REFERENCE NO. R-2552B	SHEET NO. 32
ROADWAY DESIGN ENGINEER	HYDRAULICS ENGINEER
CONST. REV.	
R / W REV.	

-L-LT



-L-RT



31-JAN-2005 15:00
RACRuz AT RD195380