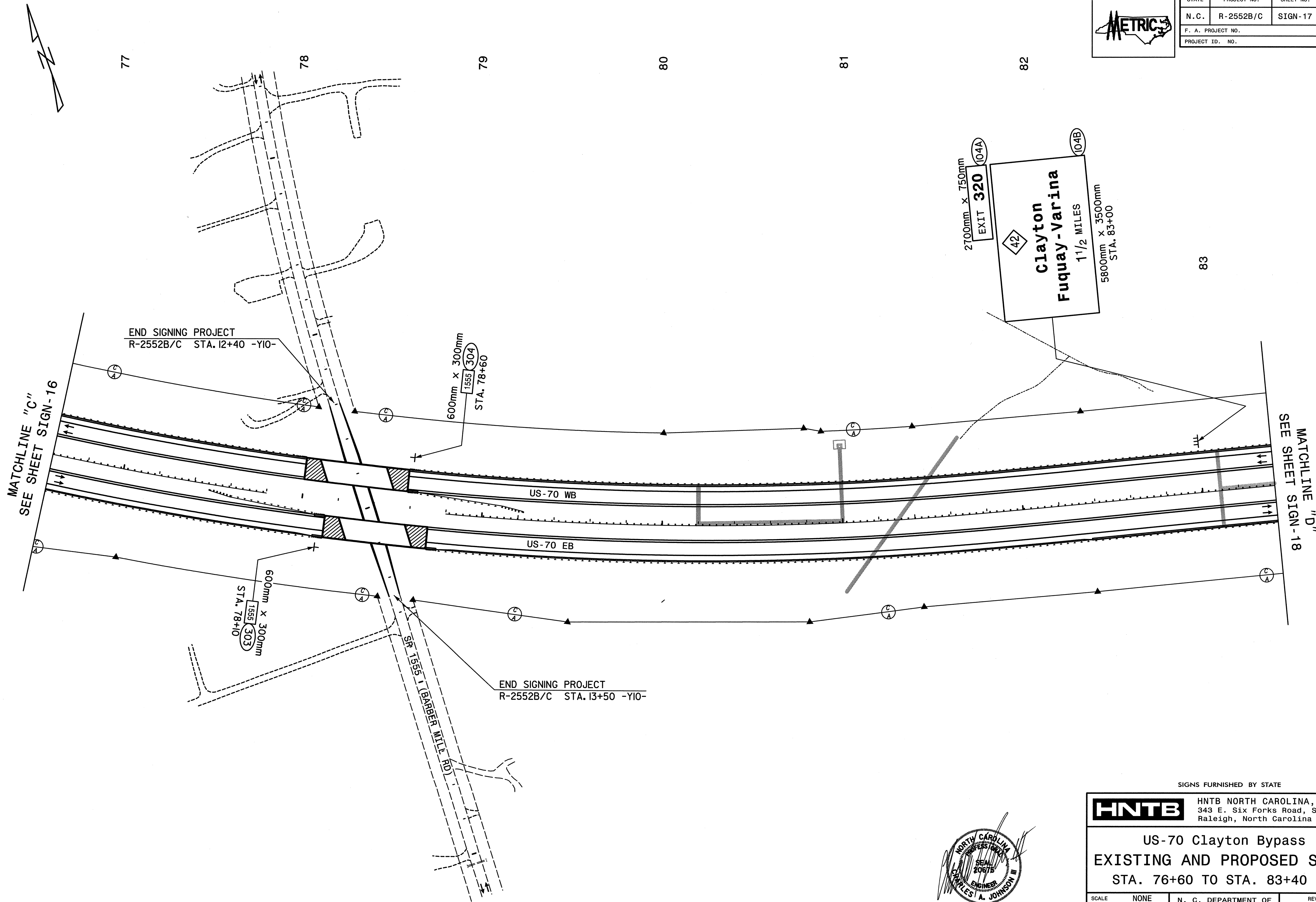


STATE	PROJECT NO.	SHEET NO.	TOTAL SHTS.
N.C.	R-2552B/C	SIGN-17	
F. A. PROJECT NO.			
PROJECT ID. NO.			



MATCHLINE "C"  
SEE SHEET SIGN-16

MATCHLINE "D"  
SEE SHEET SIGN-18

END SIGNING PROJECT  
R-2552B/C STA. 12+40 -Y10-

END SIGNING PROJECT  
R-2552B/C STA. 13+50 -Y10-

2700mm x 750mm  
EXIT 320 (O4A)

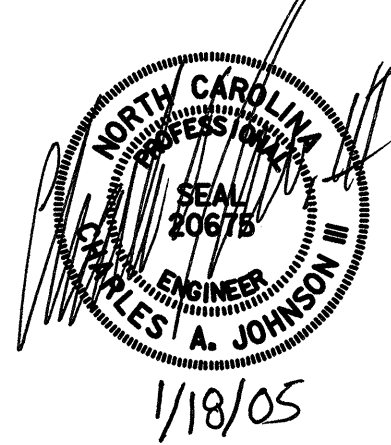
42

Clayton - Varina  
1 1/2 MILES

5800mm x 3500mm  
STA. 83+00

600mm x 300mm  
1565 (303)  
STA. 78+10

600mm x 300mm  
1565 (304)  
STA. 78+60



SIGNS FURNISHED BY STATE

**HNTB** HNTB NORTH CAROLINA, P.C.  
343 E. Six Forks Road, Suite 200  
Raleigh, North Carolina 27609

**US-70 Clayton Bypass  
EXISTING AND PROPOSED SIGNS  
STA. 76+60 TO STA. 83+40 -L-**

SCALE	NONE	N. C. DEPARTMENT OF TRANSPORTATION DIVISION OF HIGHWAYS TRAFFIC ENGINEERING BRANCH	REVISIONS	
DATE	12/2004			
DWG. BY	KHI			
DESIGN BY	KHI			
APPROVED	CAJ			