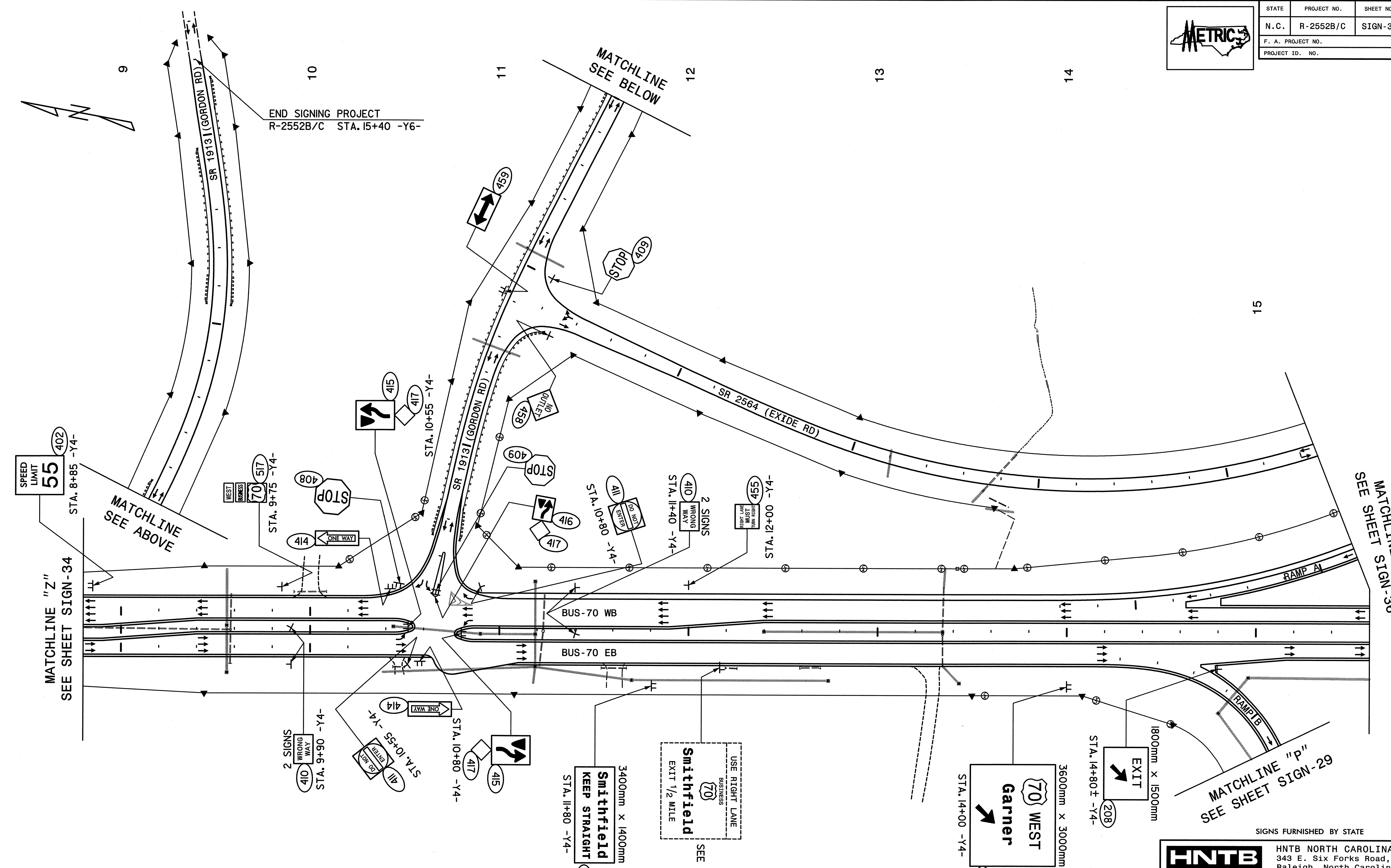


STATE	PROJECT NO.	SHEET NO.	TOTAL SHTS.
N. C.	R-2552B/C	SIGN-35	
F. A. PROJECT NO.			
PROJECT ID. NO.			



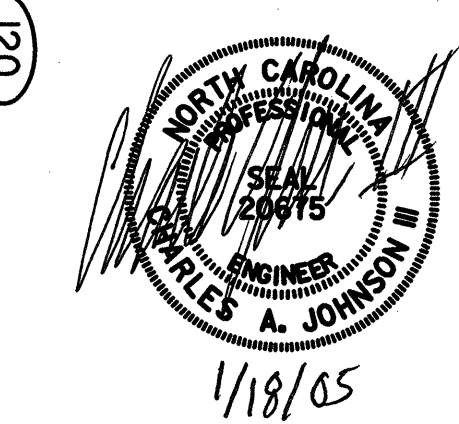
NOTE: REMOVE ALL EXISTING TYPE D, E, AND F SIGNS FROM THE AREA COVERED BY THIS PLAN SHEET.

SIGNS FURNISHED BY STATE

**HNTB** HNTB NORTH CAROLINA, P.C.  
343 E. Six Forks Road, Suite 200  
Raleigh, North Carolina 27609

**US-70 Clayton Bypass  
EXISTING AND PROPOSED SIGNS  
STA. 8+80 TO STA. 15+60 -Y4-**

SCALE	NONE	N. C. DEPARTMENT OF TRANSPORTATION DIVISION OF HIGHWAYS TRAFFIC ENGINEERING BRANCH	REVISIONS
DATE	12/2004		
DWG. BY	KHI		
DESIGN BY	KHI		
APPROVED	CAJ		



Smithfield  
BUSINESS  
70  
EXIT 1/2 MILE  
SEE NOTE 1

3400mm X 1400mm  
Smithfield  
KEEP STRAIGHT  
119  
STA. 11+80 -Y4-

3600mm X 3000mm  
70 WEST  
Garner  
120  
STA. 14+00 -Y4-

1800mm X 1500mm  
EXIT  
208  
STA. 14+80 ± -Y4-