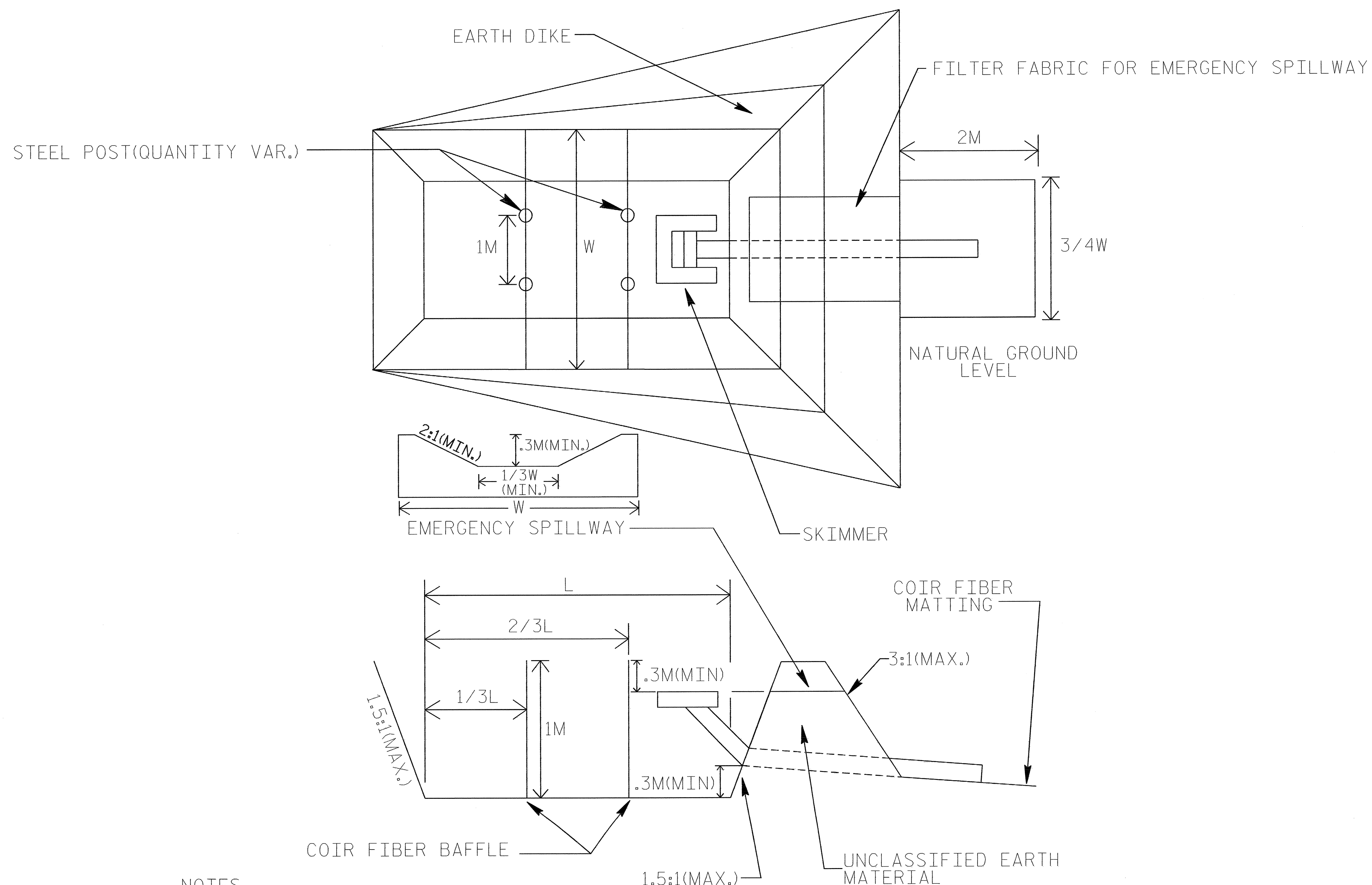


PROJECT REFERENCE NO.	SHEET NO.
R-2552B	EC-3
R / W SHEET NO.	
ROADWAY DESIGN ENGINEER	HYDRAULICS ENGINEER
CONST. REV.	
R / W REV.	



SKIMMER BASIN WITH BAFFLE DETAIL



NOTES

ALL COIR FIBER SHALL BE CONSTRUCTED WITH 700 G/M₂ COIR, NORTH AMERICAN GREEN C-125BN COIR BLANKET, OR EQUIVALENT SPECIFICATIONS.

COIR FIBER BAFFLE MUST BE STAPLED INTO SIDESLOPES OF BASIN.