
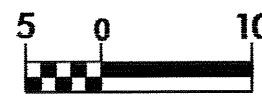


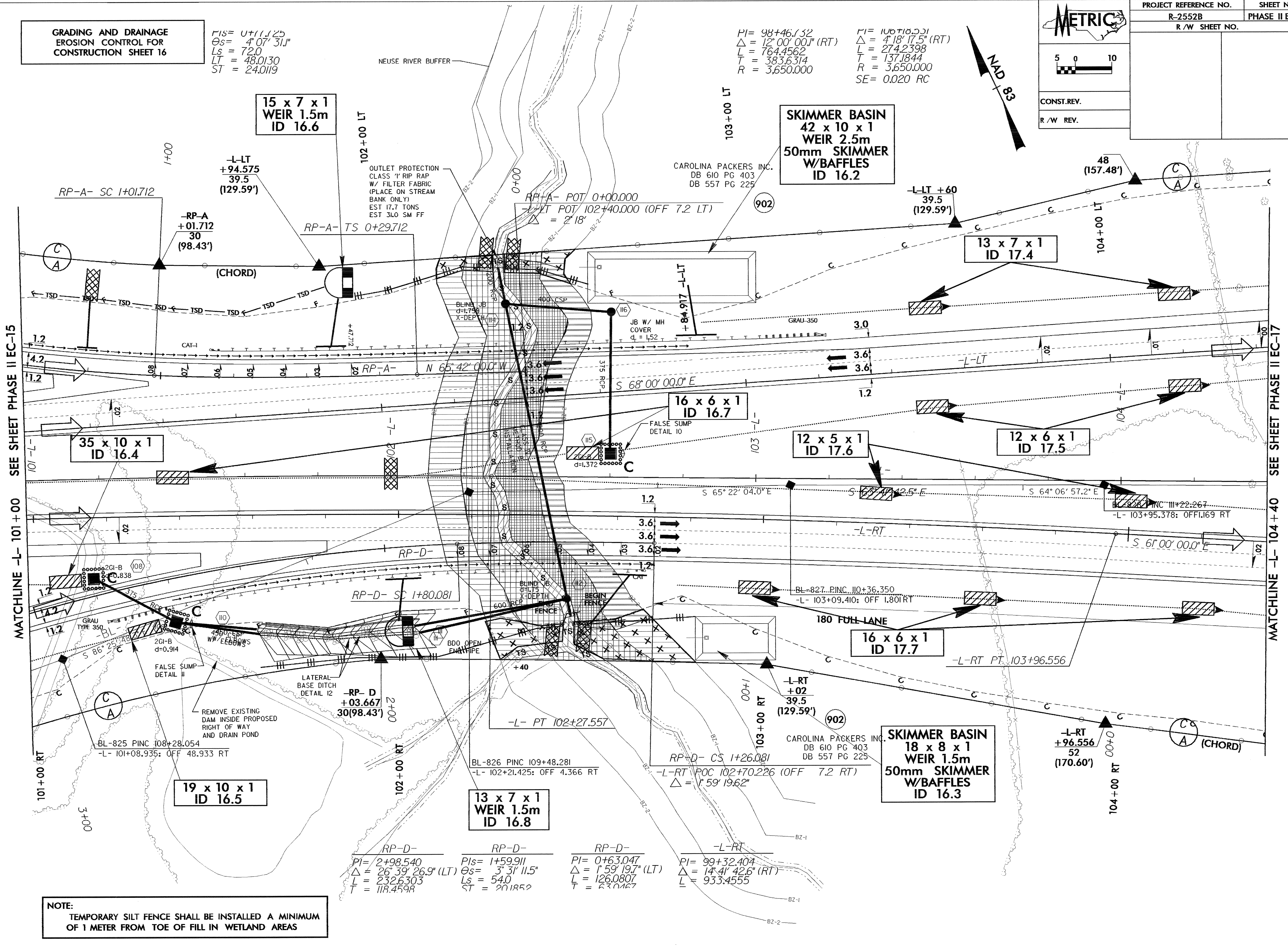
**GRADING AND DRAINAGE
EROSION CONTROL FOR
CONSTRUCTION SHEET 16**

$PI = 0+111.25$
 $\Delta s = 4' 07" 31"$
 $Ls = 72.0$
 $LT = 48.0130$
 $ST = 24.0119$

$PI = 98+46.32$
 $\Delta = 12' 00" 00" (RT)$
 $L = 764.4562$
 $T = 383.6314$
 $R = 3,650.000$

$PI = 100+18.531$
 $\Delta = 4' 18" 17.5" (RT)$
 $L = 274.2398$
 $T = 137.1844$
 $R = 3,650.000$
 $SE = 0.020 RC$

  CONST. REV. R/W REV.	PROJECT REFERENCE NO.	SHEET NO.
	R-2552B	PHASE II EC-16
	R/W SHEET NO.	



NOTE:
TEMPORARY SILT FENCE SHALL BE INSTALLED A MINIMUM OF 1 METER FROM TOE OF FILL IN WETLAND AREAS