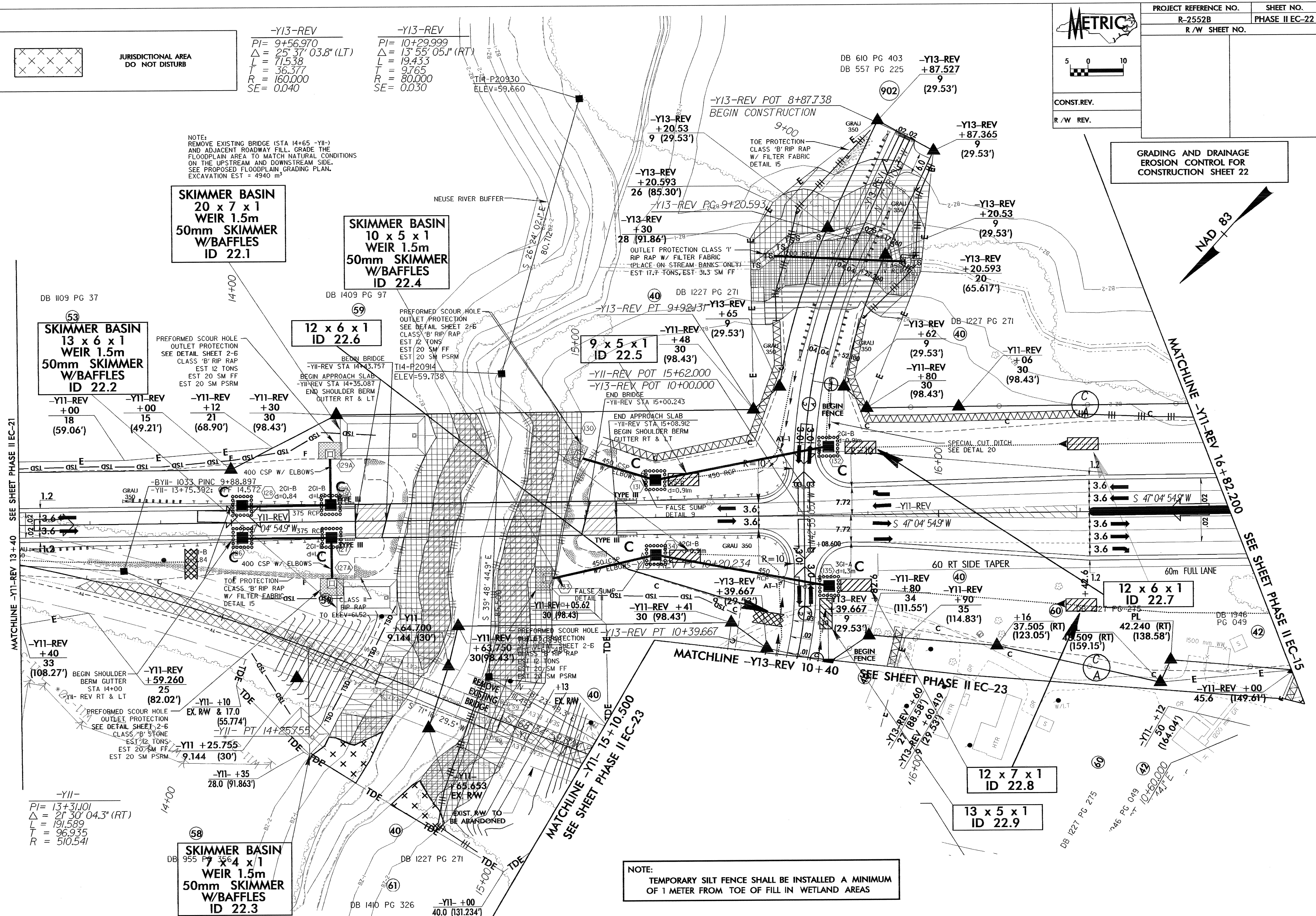

**JURISDICTIONAL AREA
DO NOT DISTURB**

-Y13-REV
 PI= 9+56.970
 Δ = 25° 37' 03.8" (LT)
 L = 71.538
 T = 36.377
 R = 160.000
 SE = 0.040

-Y13-REV
 PI= 10+29.999
 Δ = 13° 55' 05.1" (RT)
 L = 19.433
 T = 9.765
 R = 80.000
 SE = 0.030

NOTE:
 REMOVE EXISTING BRIDGE (STA 14+65 -Y11-)
 AND ADJACENT ROADWAY FILL. GRADE THE
 FLOODPLAIN AREA TO MATCH NATURAL CONDITIONS
 ON THE UPSTREAM AND DOWNSTREAM SIDE.
 SEE PROPOSED FLOODPLAIN GRADING PLAN.
 EXCAVATION EST = 4940 m³

**GRADING AND DRAINAGE
EROSION CONTROL FOR
CONSTRUCTION SHEET 22**



MATCHLINE -Y11-REV 13+40 SEE SHEET PHASE II EC-21

MATCHLINE -Y11-REV 16+82.200 SEE SHEET PHASE II EC-15

NOTE:
 TEMPORARY SILT FENCE SHALL BE INSTALLED A MINIMUM
 OF 1 METER FROM TOE OF FILL IN WETLAND AREAS