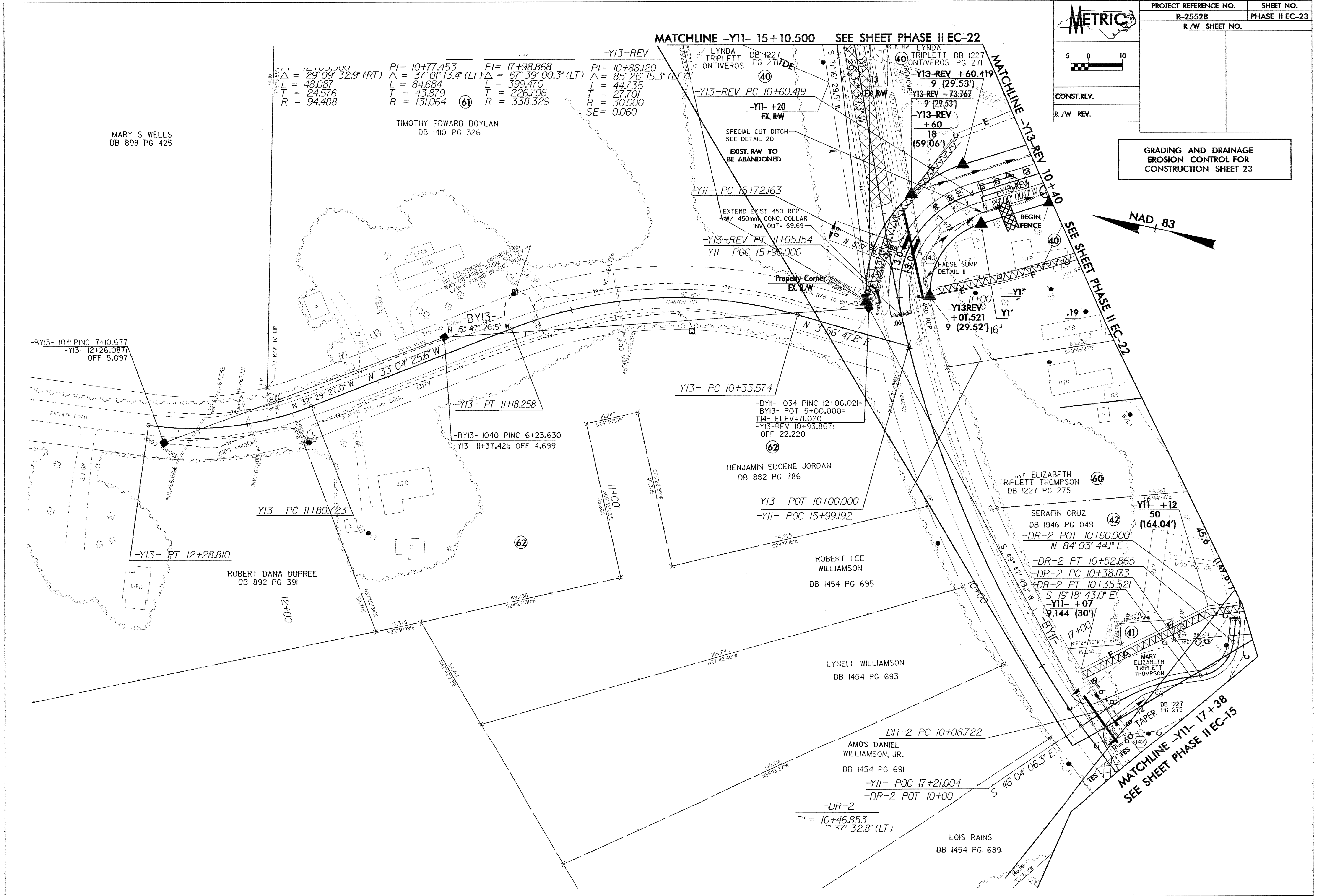
 CONST. REV.	PROJECT REFERENCE NO.	SHEET NO.
	R-2552B	PHASE II EC-23
	R/W SHEET NO.	

**GRADING AND DRAINAGE
EROSION CONTROL FOR
CONSTRUCTION SHEET 23**



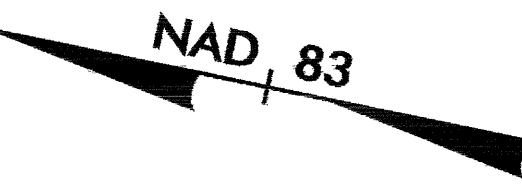
MARY S WELLS
DB 898 PG 425

$\Delta = 29^{\circ}09'32.9"$ (RT) $PI = 10+77.453$ $PI = 17+98.868$ $PI = 10+88.120$
 $L = 48.087$ $\Delta = 37^{\circ}01'13.4"$ (LT) $\Delta = 67^{\circ}39'00.3"$ (LT) $\Delta = 85^{\circ}26'15.3"$ (LT)
 $T = 24.576$ $L = 84.684$ $L = 399.470$ $L = 447.35$
 $R = 94.488$ $T = 43.879$ $T = 226.706$ $T = 27.701$
 $R = 131.064$ (61) $R = 338.329$ $R = 30.000$
 $SE = 0.060$

TIMOTHY EDWARD BOYLAN
DB 1410 PG 326

MATCHLINE -Y11- 15+10.500 SEE SHEET PHASE II EC-22

MATCHLINE -Y13-REV 10+40 SEE SHEET PHASE II EC-22



-BY13- 1041 PINC 7+10.677
-Y13- 12+26.087
OFF 5.097

-Y13- PC 11+807.23

-Y13- PT 12+28.810

ROBERT DANA DUPREE
DB 892 PG 391

-Y13- PT 11+18.258

-BY13- 1040 PINC 6+23.630
-Y13- 11+37.421; OFF 4.699

-Y13- PC 10+33.574

-BY11- 1034 PINC 12+06.021=
-BY13- POT 5+00.000=
T14- ELEV=71.020
-Y13-REV 10+93.867;
OFF 22.220

BENJAMIN EUGENE JORDAN
DB 882 PG 786

-Y13- POT 10+00.000
-Y11- POC 15+99.192

ROBERT LEE WILLIAMSON
DB 1454 PG 695

LYNELL WILLIAMSON
DB 1454 PG 693

AMOS DANIEL WILLIAMSON, JR.
DB 1454 PG 691

-Y11- POC 17+21.004
-DR-2 POT 10+00

-DR-2
 $\Delta = 10+46.853$
 $\Delta = 77^{\circ}32.8"$ (LT)

LOIS RAINS
DB 1454 PG 689

MARY ELIZABETH TRIPLETT THOMPSON
DB 1227 PG 275

SERAFIN CRUZ
DB 1946 PG 049
-DR-2 POT 10+60.000
N 84°03'44" E

-DR-2 PT 10+52.865
-DR-2 PC 10+38.173
-DR-2 PT 10+35.521
S 19°18'43.0" E

-Y11- +07
9.144 (30')

MARY ELIZABETH TRIPLETT THOMPSON
DB 1227 PG 275

MATCHLINE -Y11- 17+38
SEE SHEET PHASE II EC-15