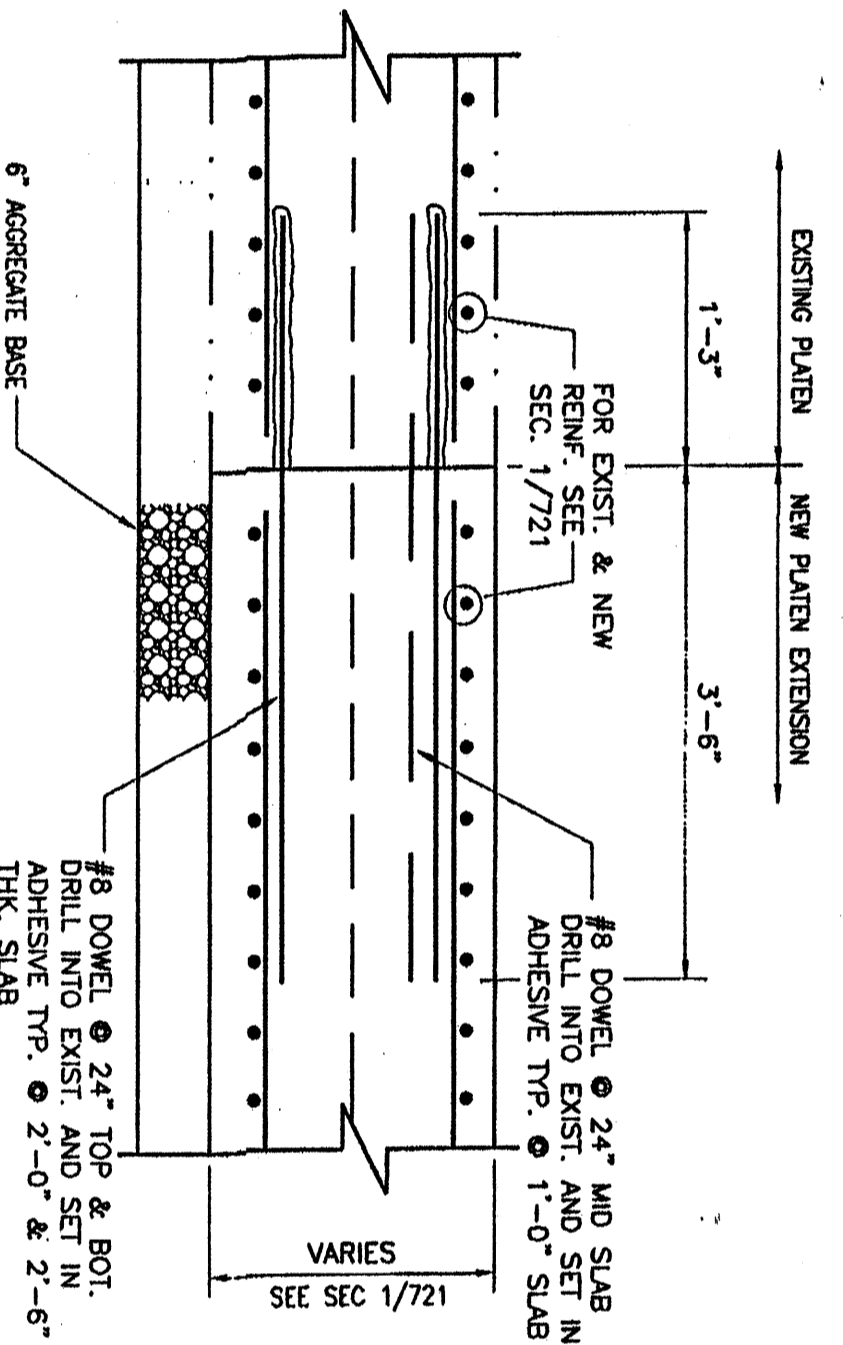
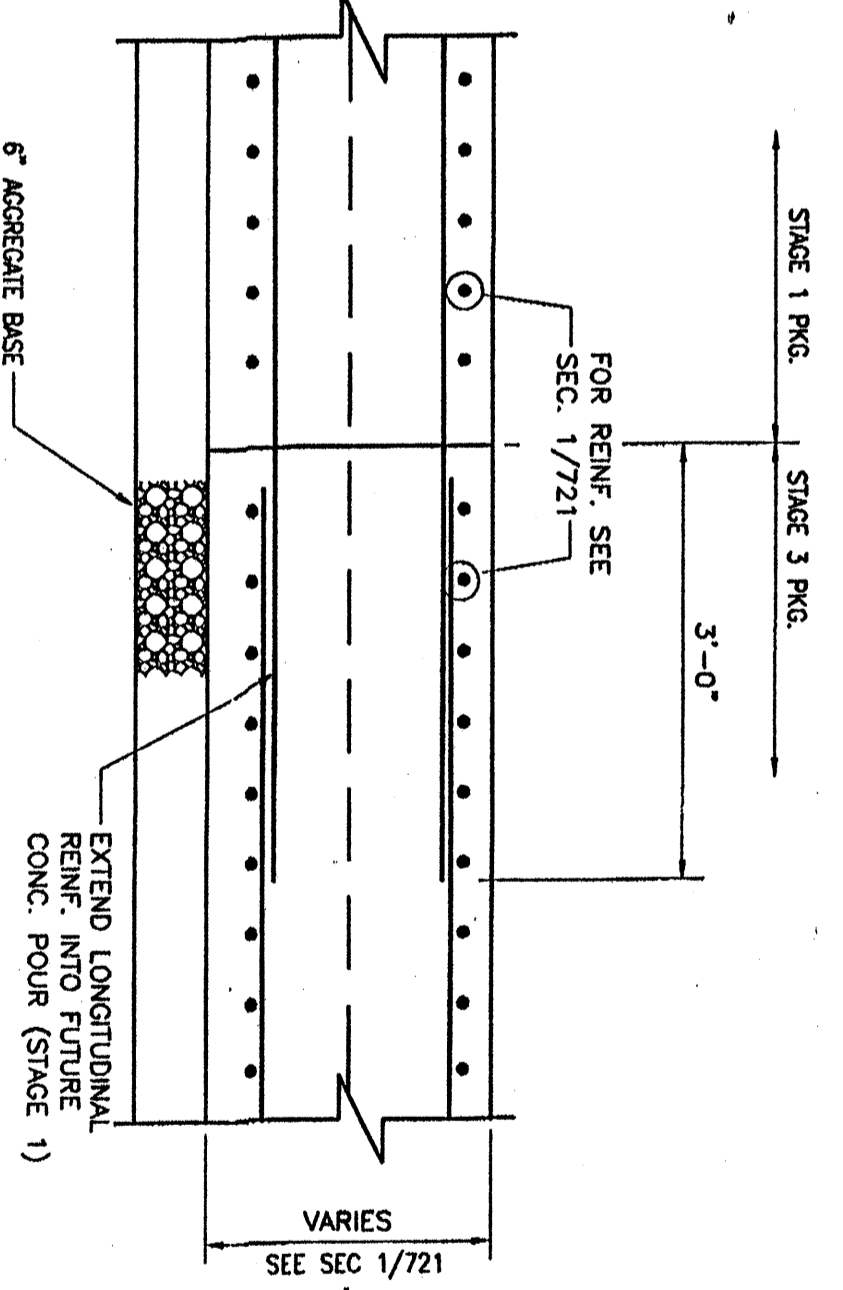


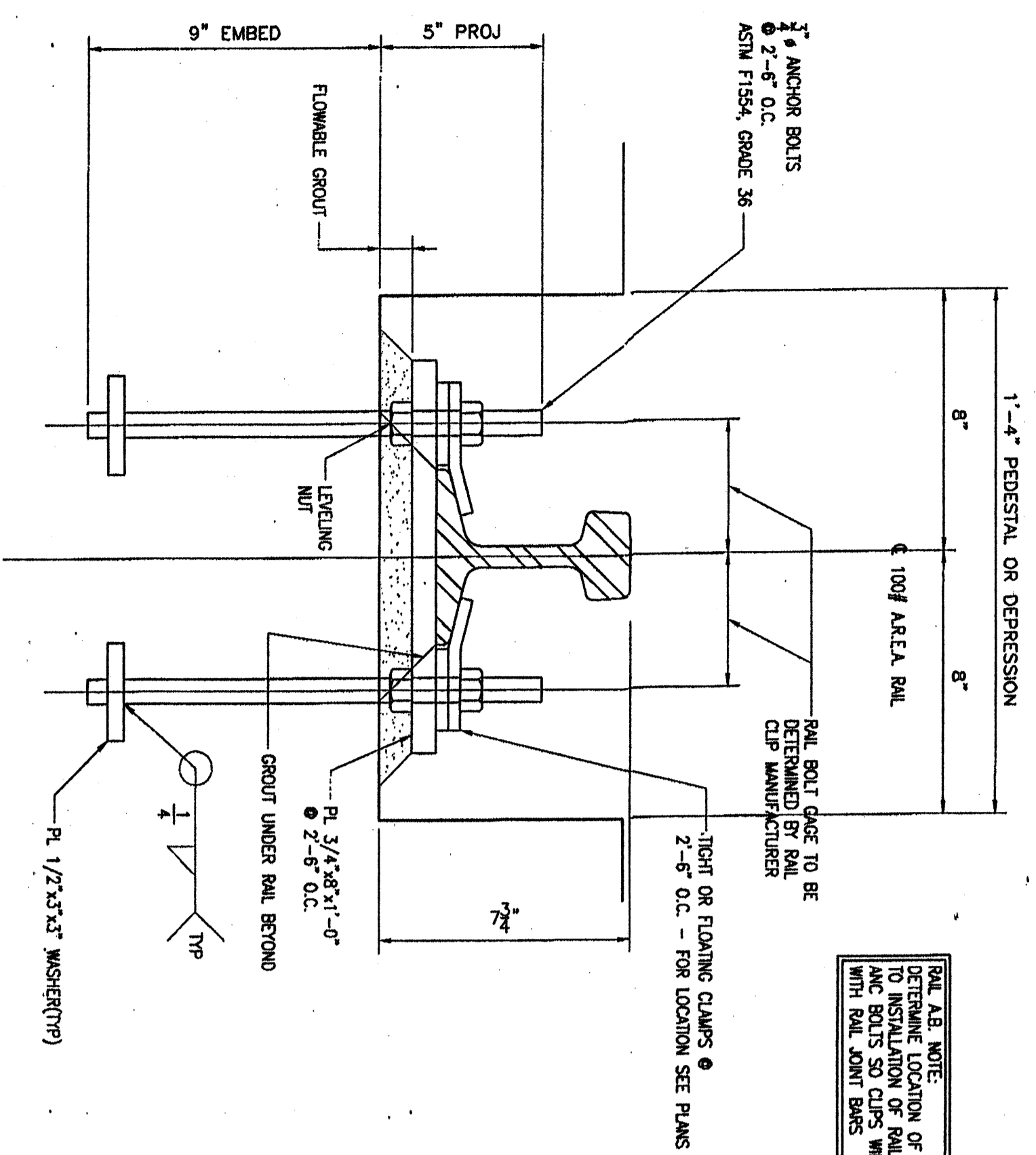
SECTION 1  
SCALE 3/4" = 1'-0" S-720



SECTION 3  
SCALE 3/4" = 1'-0" S-721

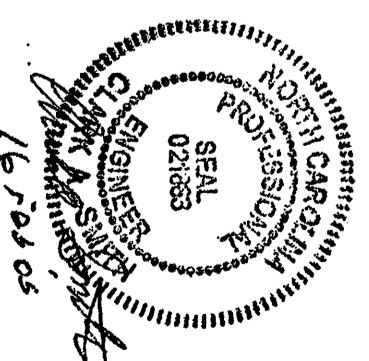


SECTION 4  
SCALE 3/4" = 1'-0" S-721



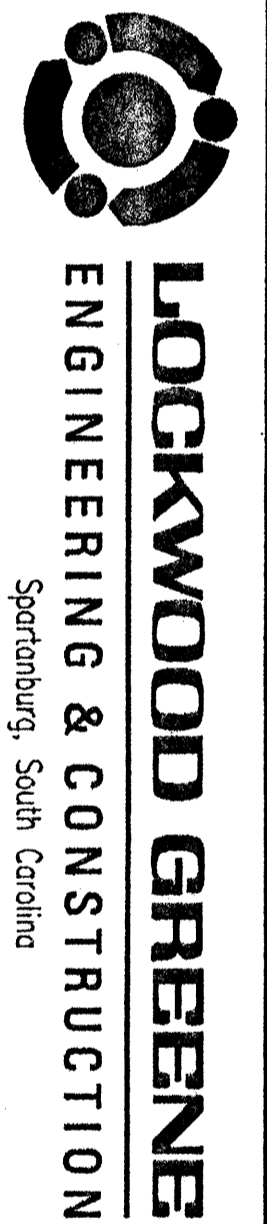
DETAIL 2  
SCALE 3/4" = 1'-0" S-721

- NOTES:
1. ALL RAIL JOINT DETAILS AND JOINTING SHALL BE CONFORMANT WITH THE REQUIREMENTS OF THE RAILROAD CONSTRUCTION MANUAL, SECTION 5-3.5.4.1 (ASPHALTIC CONCRETE INTERLOCKING).
  2. ASPHALTIC CONCRETE - ASPHERON ASPHERON 610 FOR TYPE S-3.5.4 ASPHALTIC CONCRETE INTERLOCKING.
  3. TIE-DOWNS TO BE R-346-A BY NEWARK FOUNDRY COMPANY OR APPROVED EQUAL.



NO.	DATE	DESCRIPTION	BY	CHK.
0	16 FEB 2008	ISSUED FOR BID/CONSTRUCTION - STAGE 1 PACKAGE	BAZ	JGC

DESIGNED BY	BAZ
CHECKED BY	L. GRIFFIN
DRAWN BY	L. GRIFFIN
CLEARANCE	



MISCELLANEOUS SECTIONS AND DETAILS

PHASE VII  
MARINE MAINTENANCE FACILITY  
NORTH CAROLINA DEPARTMENT OF TRANSPORTATION  
MANNING HARBOR, NC

JOB NO.	019054.03	REV. NO.	0
PROJECT NO.	S-721.049	DATE	
SCALE	AS NOTED	NO.	S-721