

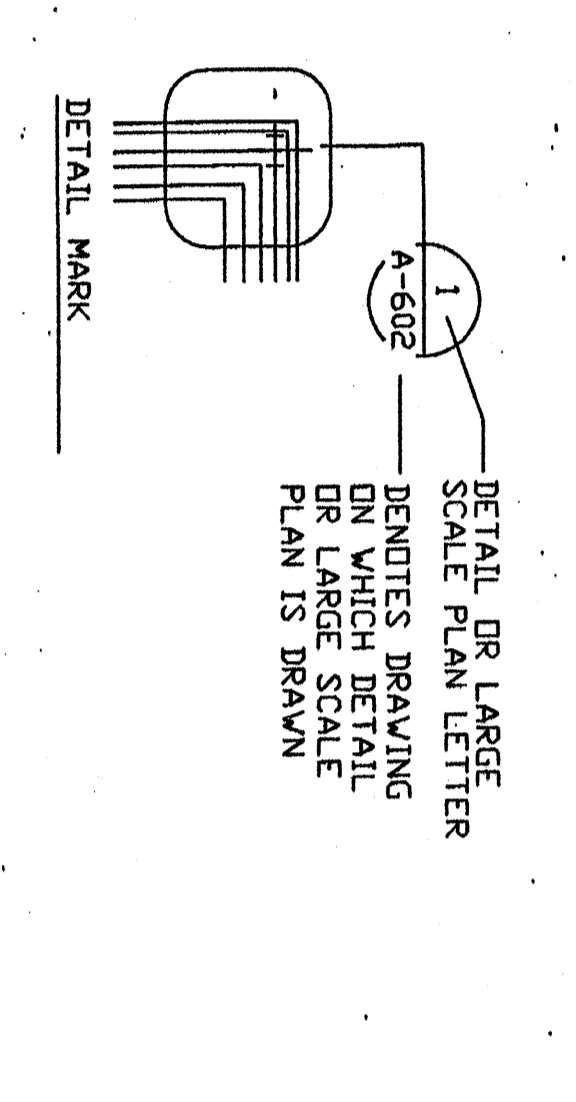
ABBREVIATIONS:
NOTE: ALL ABBREVIATIONS ARE GENERAL AND MAY NOT NECESSARILY APPEAR WITHIN THIS SET OF DRAWINGS.

4	ANGLE	HTG	HEATING
5	CENTRALINE	HVAC	HEATING/VENTILATING/AIR CONDITIONING
6	CHANNEL	HT	HEIGHT
7	CONCRETE	HC	HOLLOW CORE
8	CONCRETE	HDL	HOLLOW DECK
9	CONCRETE	HDK (CS)	HOLLOW DECK (CONCRETE)
10	CONCRETE	HVHZ	HORIZONTAL
11	CONCRETE	HVHZ	HORIZONTAL
12	CONCRETE	HVHZ	HORIZONTAL
13	CONCRETE	HVHZ	HORIZONTAL
14	CONCRETE	HVHZ	HORIZONTAL
15	CONCRETE	HVHZ	HORIZONTAL
16	CONCRETE	HVHZ	HORIZONTAL
17	CONCRETE	HVHZ	HORIZONTAL
18	CONCRETE	HVHZ	HORIZONTAL
19	CONCRETE	HVHZ	HORIZONTAL
20	CONCRETE	HVHZ	HORIZONTAL
21	CONCRETE	HVHZ	HORIZONTAL
22	CONCRETE	HVHZ	HORIZONTAL
23	CONCRETE	HVHZ	HORIZONTAL
24	CONCRETE	HVHZ	HORIZONTAL
25	CONCRETE	HVHZ	HORIZONTAL
26	CONCRETE	HVHZ	HORIZONTAL
27	CONCRETE	HVHZ	HORIZONTAL
28	CONCRETE	HVHZ	HORIZONTAL
29	CONCRETE	HVHZ	HORIZONTAL
30	CONCRETE	HVHZ	HORIZONTAL
31	CONCRETE	HVHZ	HORIZONTAL
32	CONCRETE	HVHZ	HORIZONTAL
33	CONCRETE	HVHZ	HORIZONTAL
34	CONCRETE	HVHZ	HORIZONTAL
35	CONCRETE	HVHZ	HORIZONTAL
36	CONCRETE	HVHZ	HORIZONTAL
37	CONCRETE	HVHZ	HORIZONTAL
38	CONCRETE	HVHZ	HORIZONTAL
39	CONCRETE	HVHZ	HORIZONTAL
40	CONCRETE	HVHZ	HORIZONTAL
41	CONCRETE	HVHZ	HORIZONTAL
42	CONCRETE	HVHZ	HORIZONTAL
43	CONCRETE	HVHZ	HORIZONTAL
44	CONCRETE	HVHZ	HORIZONTAL
45	CONCRETE	HVHZ	HORIZONTAL
46	CONCRETE	HVHZ	HORIZONTAL
47	CONCRETE	HVHZ	HORIZONTAL
48	CONCRETE	HVHZ	HORIZONTAL
49	CONCRETE	HVHZ	HORIZONTAL
50	CONCRETE	HVHZ	HORIZONTAL
51	CONCRETE	HVHZ	HORIZONTAL
52	CONCRETE	HVHZ	HORIZONTAL
53	CONCRETE	HVHZ	HORIZONTAL
54	CONCRETE	HVHZ	HORIZONTAL
55	CONCRETE	HVHZ	HORIZONTAL
56	CONCRETE	HVHZ	HORIZONTAL
57	CONCRETE	HVHZ	HORIZONTAL
58	CONCRETE	HVHZ	HORIZONTAL
59	CONCRETE	HVHZ	HORIZONTAL
60	CONCRETE	HVHZ	HORIZONTAL
61	CONCRETE	HVHZ	HORIZONTAL
62	CONCRETE	HVHZ	HORIZONTAL
63	CONCRETE	HVHZ	HORIZONTAL
64	CONCRETE	HVHZ	HORIZONTAL
65	CONCRETE	HVHZ	HORIZONTAL
66	CONCRETE	HVHZ	HORIZONTAL
67	CONCRETE	HVHZ	HORIZONTAL
68	CONCRETE	HVHZ	HORIZONTAL
69	CONCRETE	HVHZ	HORIZONTAL
70	CONCRETE	HVHZ	HORIZONTAL
71	CONCRETE	HVHZ	HORIZONTAL
72	CONCRETE	HVHZ	HORIZONTAL
73	CONCRETE	HVHZ	HORIZONTAL
74	CONCRETE	HVHZ	HORIZONTAL
75	CONCRETE	HVHZ	HORIZONTAL
76	CONCRETE	HVHZ	HORIZONTAL
77	CONCRETE	HVHZ	HORIZONTAL
78	CONCRETE	HVHZ	HORIZONTAL
79	CONCRETE	HVHZ	HORIZONTAL
80	CONCRETE	HVHZ	HORIZONTAL
81	CONCRETE	HVHZ	HORIZONTAL
82	CONCRETE	HVHZ	HORIZONTAL
83	CONCRETE	HVHZ	HORIZONTAL
84	CONCRETE	HVHZ	HORIZONTAL
85	CONCRETE	HVHZ	HORIZONTAL
86	CONCRETE	HVHZ	HORIZONTAL
87	CONCRETE	HVHZ	HORIZONTAL
88	CONCRETE	HVHZ	HORIZONTAL
89	CONCRETE	HVHZ	HORIZONTAL
90	CONCRETE	HVHZ	HORIZONTAL
91	CONCRETE	HVHZ	HORIZONTAL
92	CONCRETE	HVHZ	HORIZONTAL
93	CONCRETE	HVHZ	HORIZONTAL
94	CONCRETE	HVHZ	HORIZONTAL
95	CONCRETE	HVHZ	HORIZONTAL
96	CONCRETE	HVHZ	HORIZONTAL
97	CONCRETE	HVHZ	HORIZONTAL
98	CONCRETE	HVHZ	HORIZONTAL
99	CONCRETE	HVHZ	HORIZONTAL
100	CONCRETE	HVHZ	HORIZONTAL

MATERIAL INDICATIONS:
NOTE: ALL MATERIAL INDICATIONS MAY NOT NECESSARILY APPEAR WITHIN THIS SET OF DRAWINGS.

	EARTH
	CONCRETE
	GROUT
	CONCRETE MASONRY UNITS
	METAL
	PLYWOOD
	WOOD FINISHED
	WOOD ROUGH
	BATT INSULATION
	RIGID INSULATION
	GLASS
	ACoustical TILE
	GYPSUM WALL BOARD
	RESILIENT FLOORING
	CONCRETE FLOOR TOPPING

DRAWING SYMBOLS:



NOTES:

1. LINTELS ARE DESIGNED FOR CMU/BRICK OR LIGHTER WALL CONSTRUCTION ONLY AND ARE NOT TO CARRY FLOOR OR ROOF LOAD.
2. LINTELS ARE DESIGNED TO CARRY RUNNINGS BAND CONSTRUCTION.
3. LINTELS ARE REQUIRED ABOVE ALL OPENINGS, PENETRATIONS, RECESSED WALL FIXTURES, DOOR FRAMES, ETC.
4. FOR SPANS GREATER THAN THOSE INDICATED, CONTACT ARCHITECT/ENGINEER.

GENERAL NOTES: (WHERE APPLICABLE AND INDICATED)

1. DIMENSIONS:
 - 11 WALL DIMENSIONS ARE FROM FACE OF STUDOR FACE OF CMU OR WALL FINISHED UNLESS NOTED (IE DO NOT INCLUDE THICKNESS UNLESS OTHERWISE NOTED).
 - 12 ALL DOORS ARE DIMENSIONED TO CENTERLINE OF DOOR UNLESS OTHERWISE NOTED.
 - 13 ITEMS NOT LOCATED BY DIMENSION (GIRTS, ETC) MAY BE MOVED SLIGHTLY TO ACCOMMODATE CONSTRUCTION (SUCH AS CMU TRADES FOR INTERFERENCES MUST BE COORDINATED WITH OTHER TRADES FOR INTERFERENCES).
2. MASONRY:
 - 21 CMU SHALL BE LAID IN RUNNING BOND AND HAVE FLUSH JOINTS AT CMU TO BE COATED WITH ELASTOMERIC PAINT SYSTEM AND SLIGHTLY CONCAVE TOOLED JOINTS AT ALL OTHER LOCATIONS EXCEPT WHERE OTHERWISE INDICATED.
 - 22 UNLESS OTHERWISE NOTED OR DETAILED, HORIZONTAL WALL REINFORCING SHALL BE PLACED AT 16" VERTICALLY AND 16" HORIZONTALLY. STOP REINFORCING EACH SIDE OF CONTROL JOINTS.
 - 23 ALL CMU WALLS SHALL HAVE CONTINUOUS 8" DEEP BOND BEAMS (WITH 2-#5 BARS AS NEAR TOP OF WALL AS PRACTICABLE) AND OTHER REINFORCING AS DETAILED IN PARTITIONS AND CONTROL JOINTS AND EXPANSION JOINTS UNLESS OTHERWISE DETAILED.
 - 24 ALL CMU WALLS SHALL HAVE CONTINUOUS LINTEL BLOCK AT TOP AND BOTTOM OF ALL OPENINGS, EXTEND 8" BEYOND EACH JAMB REINFORCE BOTTOM LINTEL BLOCK WITH #5 BARS. REINFORCE TOP PER LINTEL SCHEDULE. CMU WALLS SHALL BE REINFORCED VERTICALLY WITH #5 BARS AT 16" O.C. WITH DOVELS INTO FOUNDATION AND AT THE FOLLOWING LOCATIONS: CORNERS, ENDS, INTERSECTIONS, EACH SIDE OF OPENINGS AND EACH SIDE OF CONTROL JOINTS. GROUT CMU CELLS SOLID WITH GROUT AT REINFORCING.
 - 25 WALLS SHALL BE ANCHORED TO ALL ADJACENT COLUMNS, GIRTS, BEAMS AS INDICATED ON DRAWINGS WITH ADJUSTABLE ANCHORS AT 32" O.C. VERTICALLY AND HORIZONTALLY.
 - 26 PROVIDE ALL OPENINGS AS REQUIRED FOR PIPES, CONDUITS, DUCTS, STRUCTURAL BEAMS, ETC. COORDINATE WITH HVAC, ELECTRICAL, MECHANICAL AND STRUCTURAL DRAWINGS.
 - 27 LOCATE CONTROL JOINTS AS INDICATED ON DRAWINGS AND INCLUDING THE FOLLOWING LOCATIONS: AT A SPACING OF NOT MORE THAN 32' AT AS CHANGED IN WALL HEIGHT AT CHANGES IN WALL THICKNESS, ABOVE JOINTS IN FOUNDATIONS AND FLOORS.
3. BRICKWALL:
 - 31 ALL STUDS ARE 3 5/8" METAL SPACED AT 16" O.C. UNLESS OTHERWISE NOTED.
 - 32 ALL GYPSUM WALLBOARD (GWB) IS 5/8" THICK UNLESS OTHERWISE NOTED.
 - 33 LOCATE CONTROL JOINTS AS INDICATED ON DRAWINGS AND INCLUDING THE FOLLOWING LOCATIONS: PARTITIONS - 32" MAXIMUM IN EITHER DIRECTION, AT EXPANSION OR CONTROL JOINTS IN THE BASE WALL CONSTRUCTION.
 - 34 ITEMS ATTACHED TO, OR SUPPORTED BY, GYPSUM WALLBOARD PARTITIONS ARE TO HAVE CONCEALED REINFORCING PLATES, BOLTS, OR OTHER ATTACHMENTS IN ACCORDANCE WITH THE PARTITIONS MANUFACTURER'S RECOMMENDATIONS.
4. MISCELLANEOUS:
 - 41 FOR PENETRATIONS THROUGH THE ROOF, COORDINATE SIZE AND LOCATION WITH HVAC, MECHANICAL, ELECTRICAL, AND STRUCTURAL DRAWINGS.

BUILDING INSULATION TYPES: (WHERE INDICATED)

- INSUL-1 BATT TYPE INSULATION WITH HEAVY-DUTY VINYL SCRM, R11 MIN.
- INSUL-2 BATT TYPE INSULATION WITH HEAVY-DUTY VINYL SCRM, R19 MIN.
- INSUL-3 MOLDED POLYSTYRENE INSULATED UNITS
- INSUL-4 POLYSTYRENE INSULATION
- INSUL-5 SOUND ATTENUATION BLANKET
- INSUL-6 NOT USED
- INSUL-7 1 1/2" THICK PERIMETER INSULATION
- INSUL-8 GLASS FIBER BOARD INSULATION
- INSUL-9 FIRE SAFING INSULATION

GLASS TYPES:

- GL-1 NOT USED
- GL-2 1/4" CLEAR TEMPERED SAFETY GLASS
- GL-3 1" INSULATED GLASS

16-FEB-2004 ISSUED FOR BID/ CONSTRUCTION - STAGE 1 PACKAGE

LOGKWOOD GREENE ENGINEERING & CONSTRUCTION

GENERAL NOTES, SYMBOLS AND LEGENDS

PHASE VII MARINE MAINTENANCE FACILITY NORTH CAROLINA DEPARTMENT OF TRANSPORTATION MANN'S HARBOR, NC

DATE: 01/20/05

SCALE: NONE

LOGKWOOD GREENE ENGINEERING & CONSTRUCTION