

REVISIONS

-L- CURVE DATA

PI Sta 11+11.55	PI Sta 14+4.64
$\Delta = 7^{\circ} 10' 24.1''$ (RT)	$\Delta = 39^{\circ} 20' 30.2''$ (LT)
$D = 4^{\circ} 14' 38.9''$	$D = 10^{\circ} 59' 50.2''$
$L = 169.02'$	$L = 357.74'$
$T = 84.62'$	$T = 186.25'$
$R = 1,350.00'$	$R = 521.00'$
SUPER = AS SHOWN	

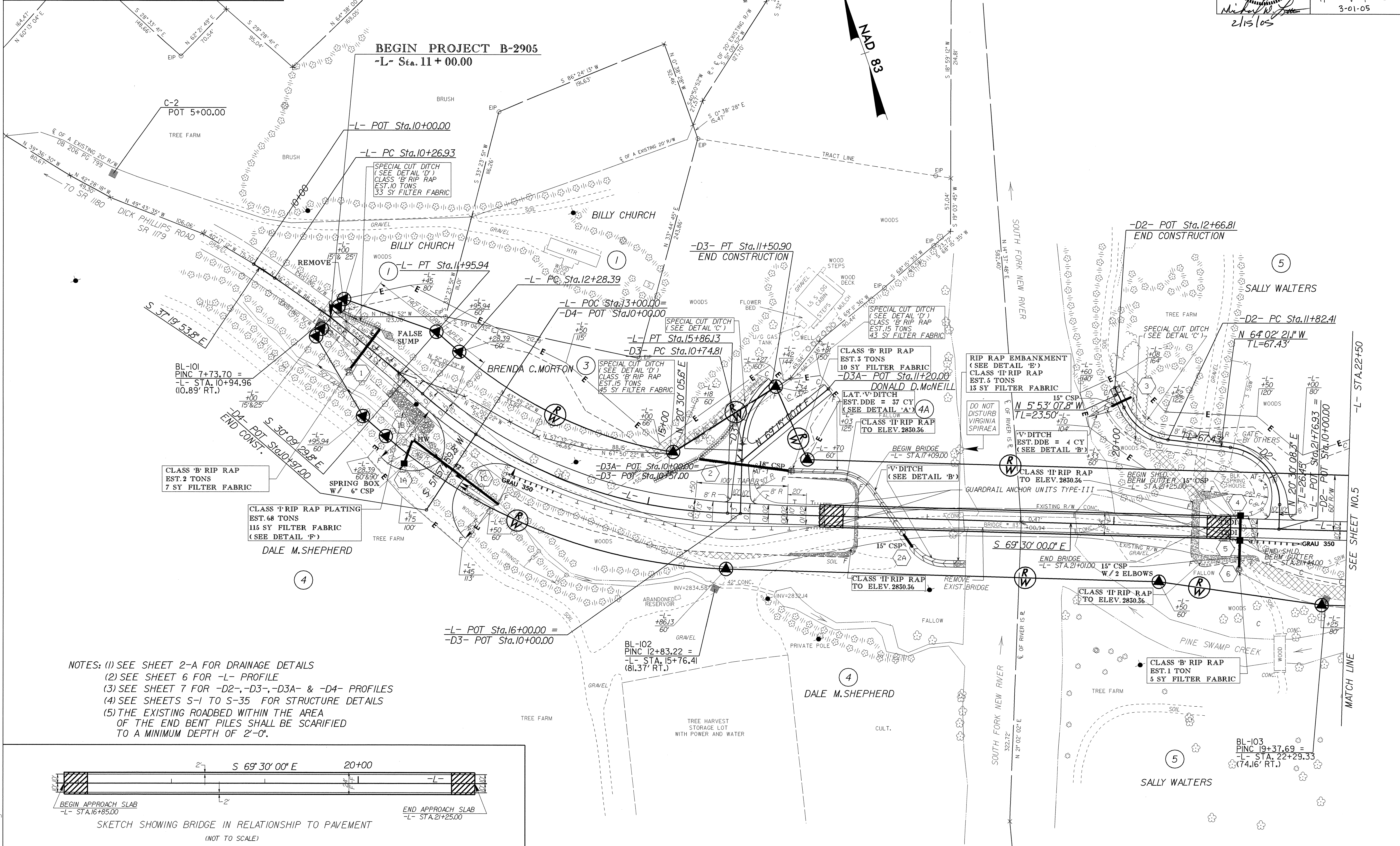
-D2- CURVE DATA

PI Sta 10+80.99	PI Sta 12+5.78
$\Delta = 84^{\circ} 32' 29.4''$ (LT)	$\Delta = 58^{\circ} 09' 13.4''$ (RT)
$D = 95^{\circ} 29' 34.7''$	$D = 95^{\circ} 29' 34.7''$
$L = 88.53'$	$L = 60.90'$
$T = 54.54'$	$T = 33.36'$
$R = 60.00'$	$R = 60.00'$

-D3- CURVE DATA

PI Sta 11+5.30
$\Delta = 48^{\circ} 26' 31.8''$ (RT)
$D = 63^{\circ} 39' 43.1''$
$L = 76.09'$
$T = 40.49'$
$R = 90.00'$

PROJECT REFERENCE NO. B-2905	SHEET NO. 4
RW SHEET NO.	
ROADWAY DESIGN ENGINEER	HYDRAULICS ENGINEER
2/15/05	3-01-05



15-FEB-2005 08:25:30 544.psh
F:\Young