
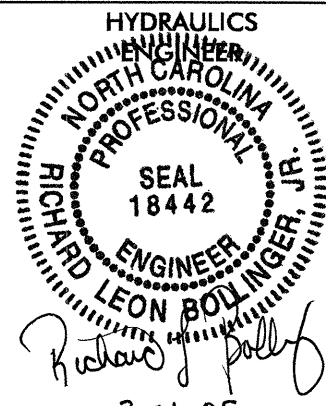
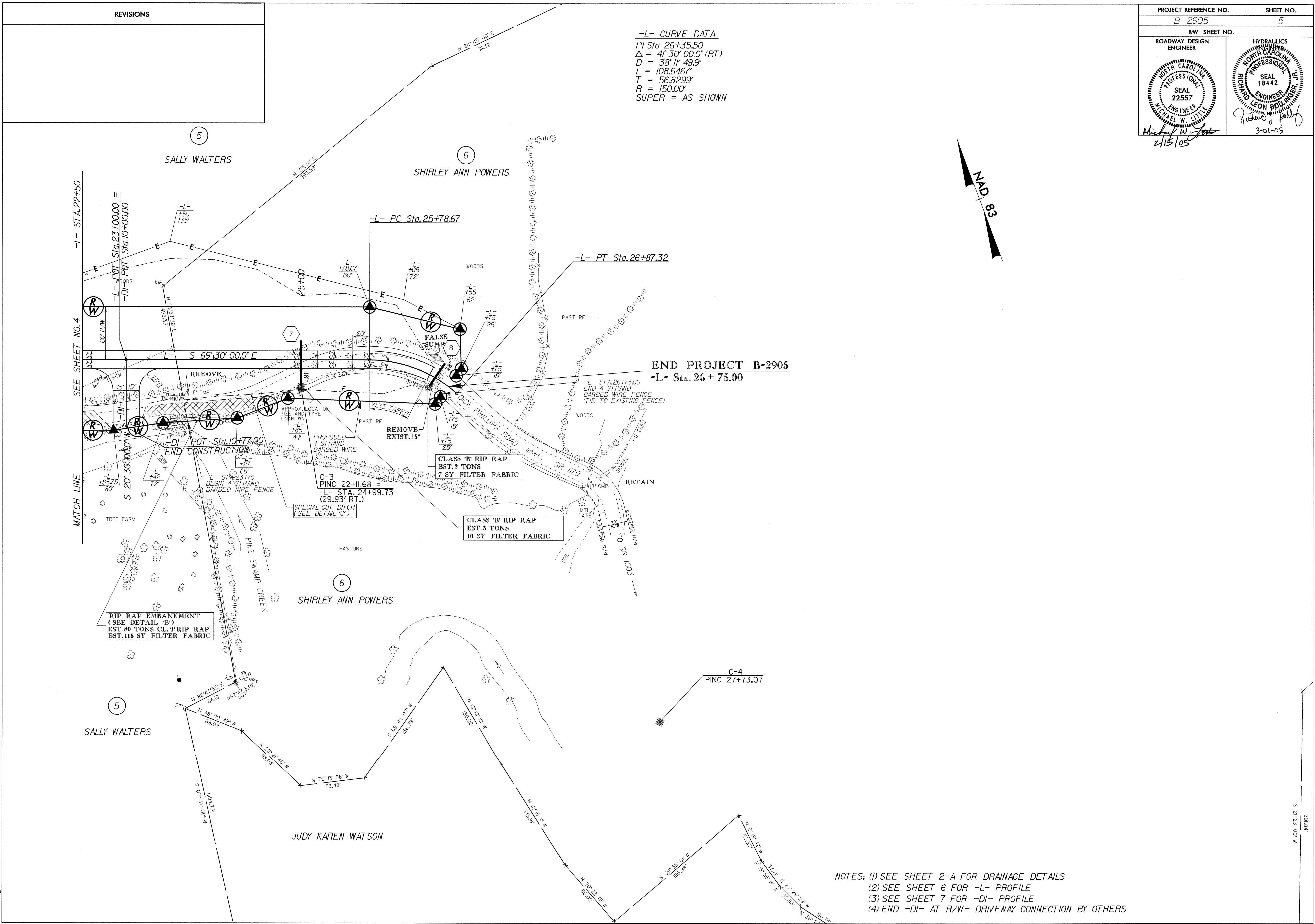
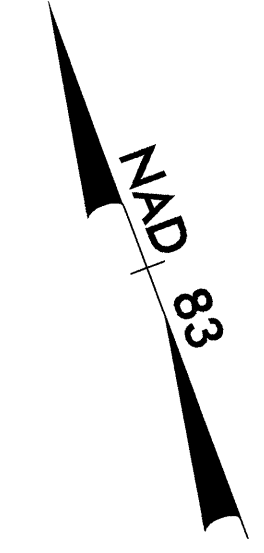


REVISIONS

PROJECT REFERENCE NO. B-2905	SHEET NO. 5
RW SHEET NO.	
ROADWAY DESIGN ENGINEER 	HYDRAULICS ENGINEER 
Michael W. Little 2/15/05	Richard Leon Bolinger 3-01-05

-L- CURVE DATA
 PI Sta 26+35.50
 $\Delta = 41^{\circ} 30' 00.0''$ (RT)
 $D = 38^{\circ} 11' 49.9''$
 $L = 108.6467'$
 $T = 56.8299'$
 $R = 150.00'$
 SUPER = AS SHOWN



NOTES: (1) SEE SHEET 2-A FOR DRAINAGE DETAILS
 (2) SEE SHEET 6 FOR -L- PROFILE
 (3) SEE SHEET 7 FOR -DI- PROFILE
 (4) END -DI- AT R/W- DRIVEWAY CONNECTION BY OTHERS

15-FEB-2005 09:28
 R:\proj\A126\F2905\esh
 FMYoung AT 10223221

301.84'
 S 21° 23' 00.00" W