

CROSS SECTION THROUGH BENT FOUR

8-271130
B-2905
ASHE CO.

¢

B4-A
20+25, 7' LT

B4-B
20+25, 7' RT

2830

2830

2820

2820

2810

2810

2800

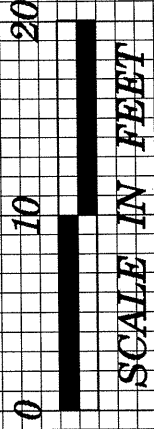
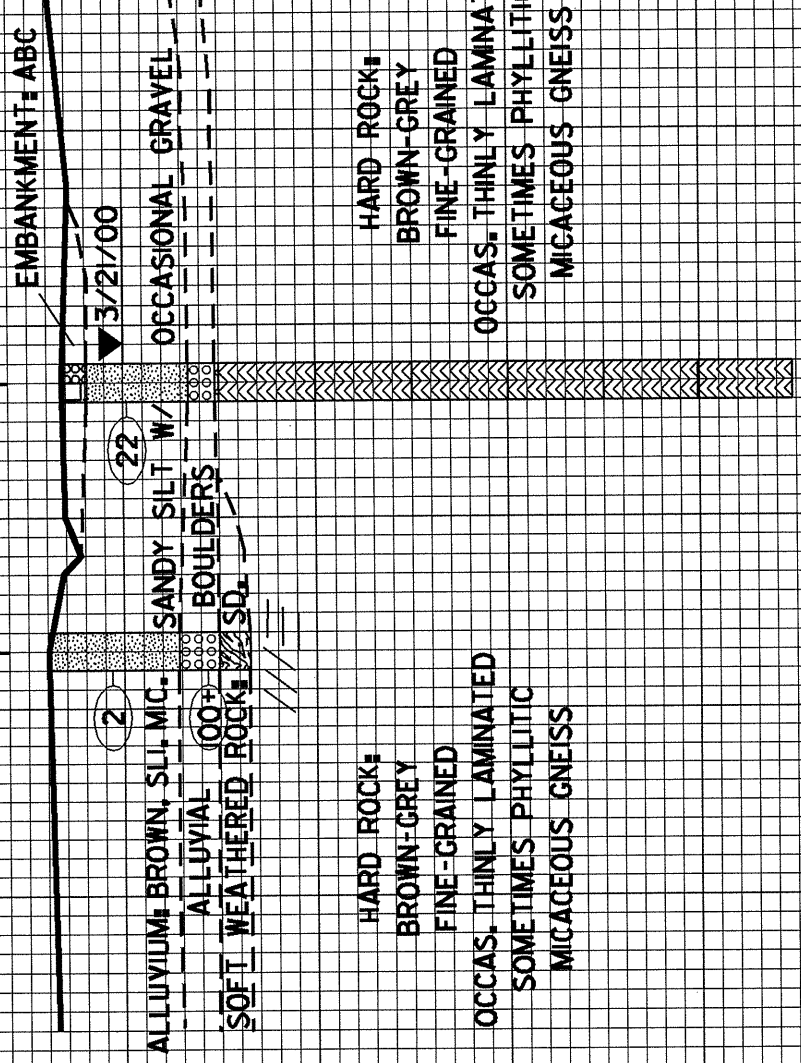
2800

2790

2790

2780

2780



CROSS SECTION THROUGH END BENT TWO

8-271130
B-2905
ASHE CO.

¢

EB2-A
21+00, 15' LT

EB2-B
21+00, 15' RT

2830

2830

2820

2820

2810

2810

2800

2800

2790

2790

