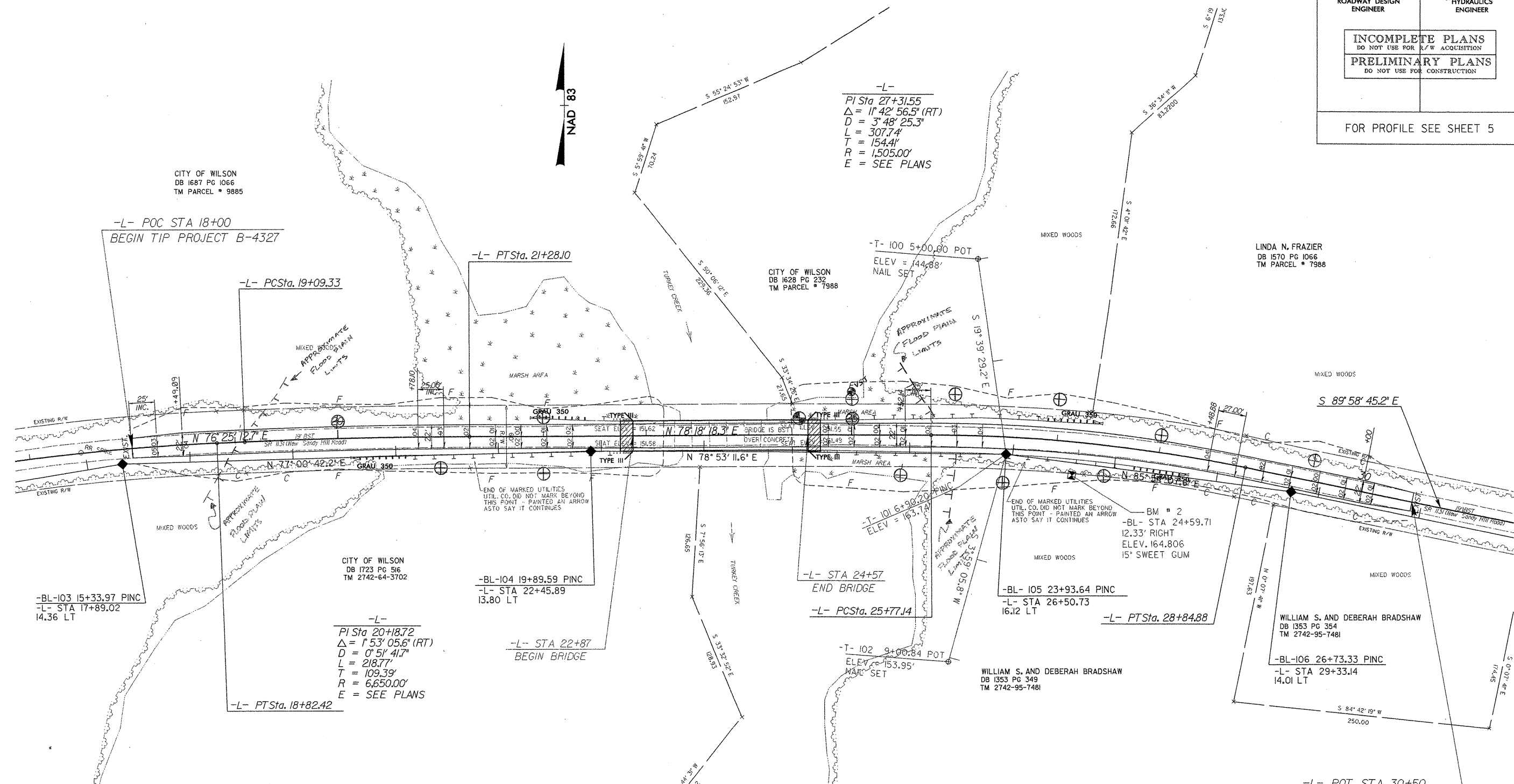


PROJECT REFERENCE NO. B-4327	SHEET NO. 4
RW SHEET NO.	
ROADWAY DESIGN ENGINEER	HYDRAULICS ENGINEER
INCOMPLETE PLANS DO NOT USE FOR R/W ACQUISITION PRELIMINARY PLANS DO NOT USE FOR CONSTRUCTION	
FOR PROFILE SEE SHEET 5	

8/17/99



REVISIONS

-BL-103 15+33.97 PINC
-L- STA 17+89.02
14.36 LT

-L-
PI Sta 20+18.72
Δ = 1°53'05.6" (RT)
D = 0'51" 41.7"
L = 218.77'
T = 109.39'
R = 6,650.00'
E = SEE PLANS
-L- PTSta. 18+82.42

-BL-104 19+89.59 PINC
-L- STA 22+45.89
13.80 LT

-L- STA 22+87
BEGIN BRIDGE

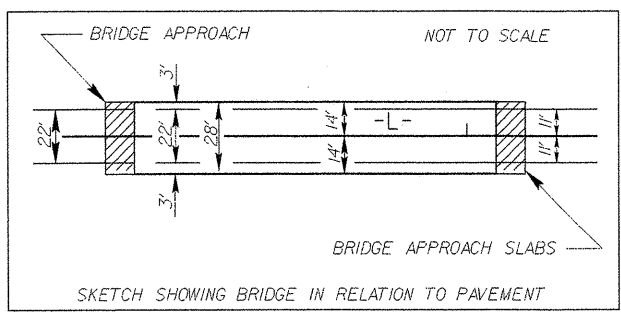
-L- STA 24+57
END BRIDGE
-L- PCSta. 25+77.14

-BL-105 23+93.64 PINC
-L- STA 26+50.73
16.12 LT

-L- PTSta. 28+84.88

-BL-106 26+73.33 PINC
-L- STA 29+33.14
14.01 LT

-L- POT STA 30+50
END TIP PROJECT B-4327



-L-
PI Sta 17+36.85
Δ = 8°29'00.8" (RT)
D = 2'54" 30.3"
L = 291.69'
T = 146.11'
R = 1,970.00'
e = EXIST

DATUM DESCRIPTION
 THE LOCALIZED COORDINATE SYSTEM DEVELOPED FOR THIS PROJECT IS BASED ON THE STATE PLANE COORDINATES ESTABLISHED BY NCDOT FOR MONUMENT "GPS B4327-1" WITH NAD 83 STATE PLANE GRID COORDINATES OF NORTHING: 725061.0695(11) EASTING: 2246440.2250(11) THE AVERAGE COMBINED GRID FACTOR USED ON THIS PROJECT (GROUND TO GRID) IS: 0.99990586 THE N.C. LAMBERT GRID BEARING AND LOCALIZED HORIZONTAL GROUND DISTANCE FROM "GPS B4327-1" TO -L- STATION 18+00.00 IS N 69° 04' 20.09" E 1,331.7551' ALL LINEAR DIMENSIONS ARE LOCALIZED HORIZONTAL DISTANCES VERTICAL DATUM USED IS NAVD 88

I:\411C-2003\2208
 B:\Roadway\Proj\B4327-rdy-par\04.dgn
 JBT\thompson AT RD13:3:67