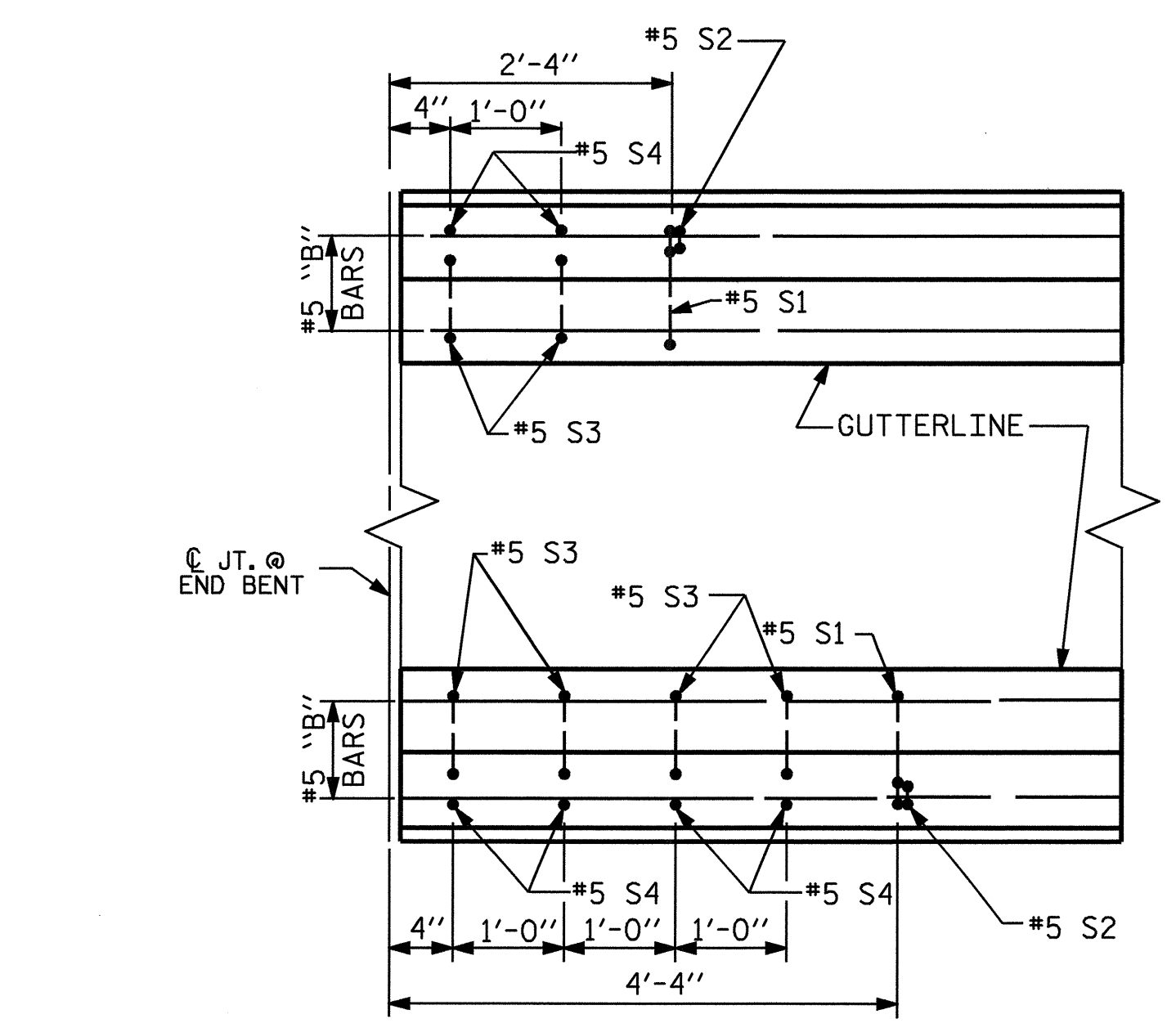
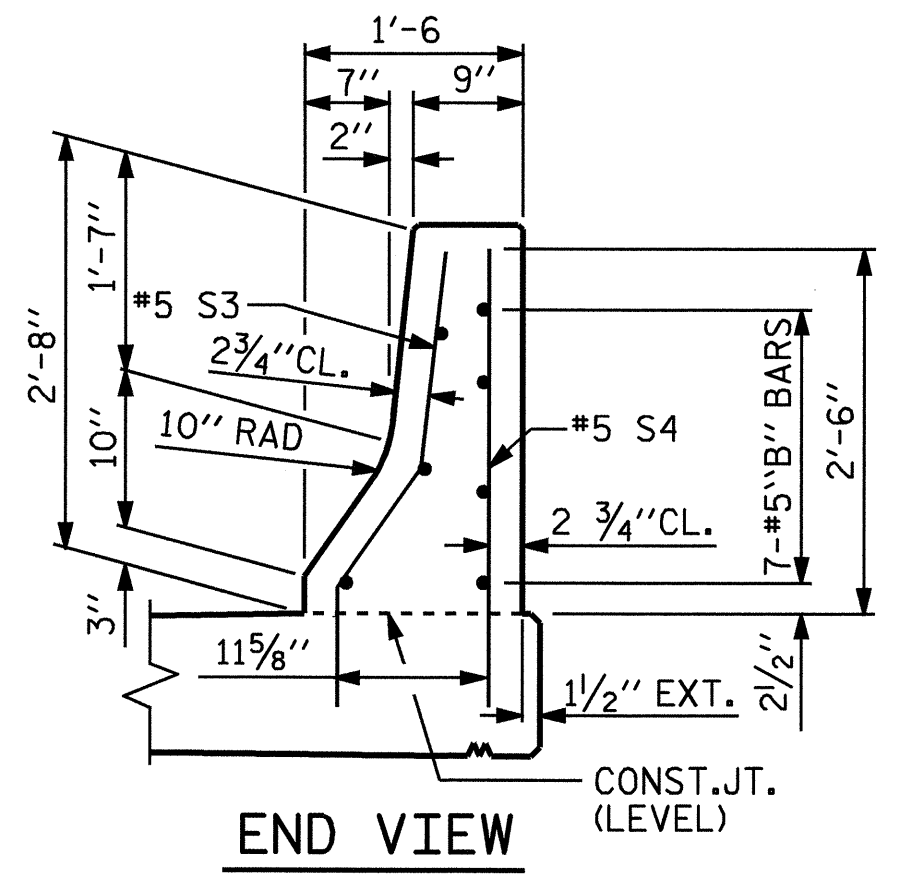


**PLAN OF BARRIER RAIL**  
 ▲ FOR ADDITIONAL REINFORCING IN BARRIER RAIL, SEE END OF RAIL DETAILS.



**PLAN**



**END VIEW**

**END OF RAIL DETAILS**  
 FOR ADHESIVE ANCHORING AT SAWED JOINTS

**NOTES**

BARRIER RAIL IN THE SPAN SHALL NOT BE CAST UNTIL ALL SLAB CONCRETE IN THE SPAN HAS BEEN CAST AND HAS REACHED A MINIMUM COMPRESSIVE STRENGTH OF 3,000 PSI.

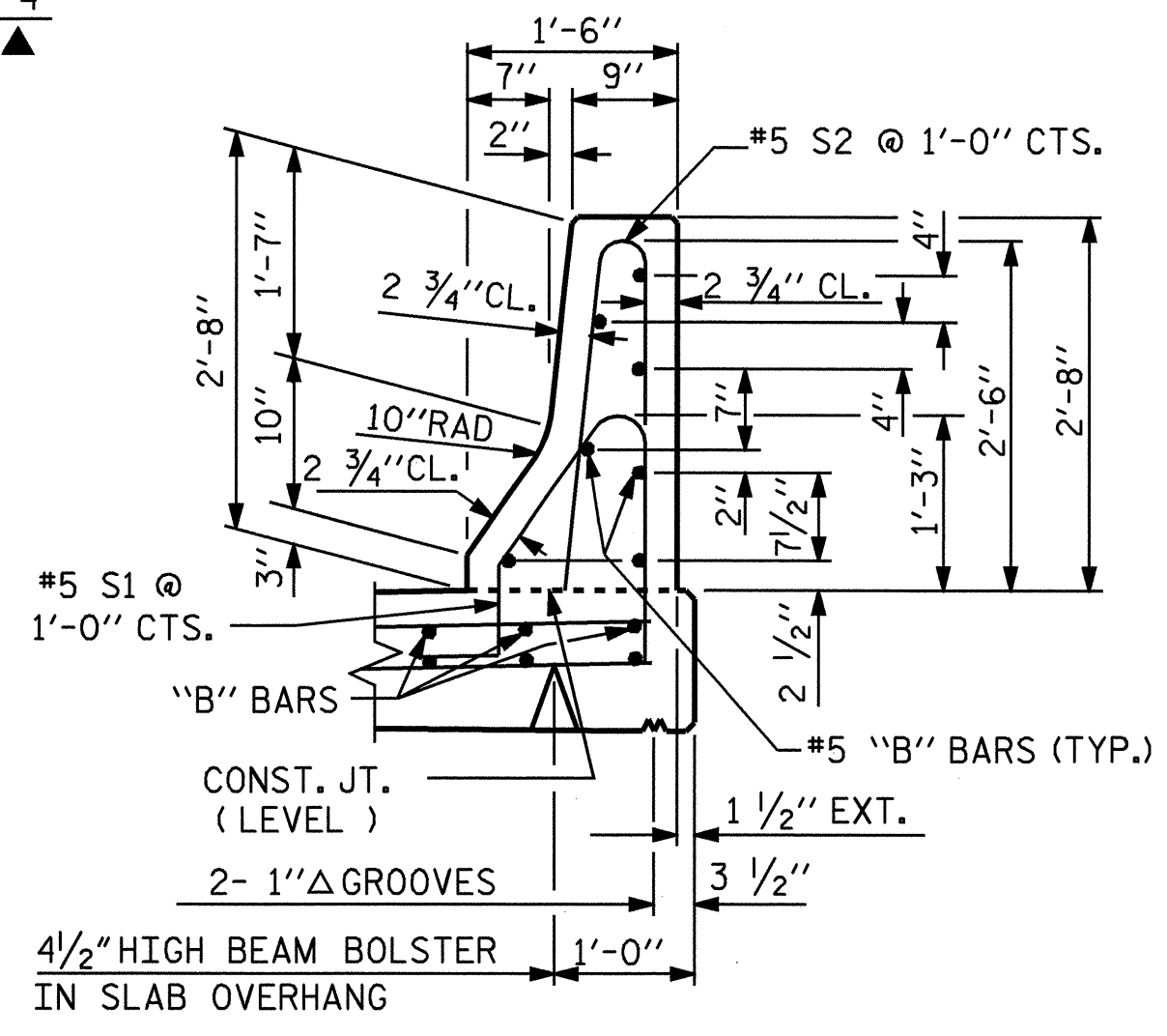
WHEN EVAZOTE JOINT SEAL IS REQUIRED, THE JOINT IN THE DECK SHALL BE SAWED PRIOR TO THE CASTING OF BARRIER RAIL.

ALL REINFORCING STEEL IN BARRIER RAILS SHALL BE EPOXY COATED.

THE #5 S3 AND #5 S4 BARS SHALL BE INSTALLED, USING AN ADHESIVE ANCHORING SYSTEM, AFTER SAWING THE JOINT. FOR ADHESIVELY ANCHORED ANCHOR BOLTS OR DOWELS, SEE SPECIAL PROVISIONS. THE YIELD LOAD FOR THE #5 S3 AND #5 S4 BARS IS 18.6 KIPS. FIELD TESTING FOR THE ADHESIVE BONDING SYSTEM IS NOT REQUIRED.

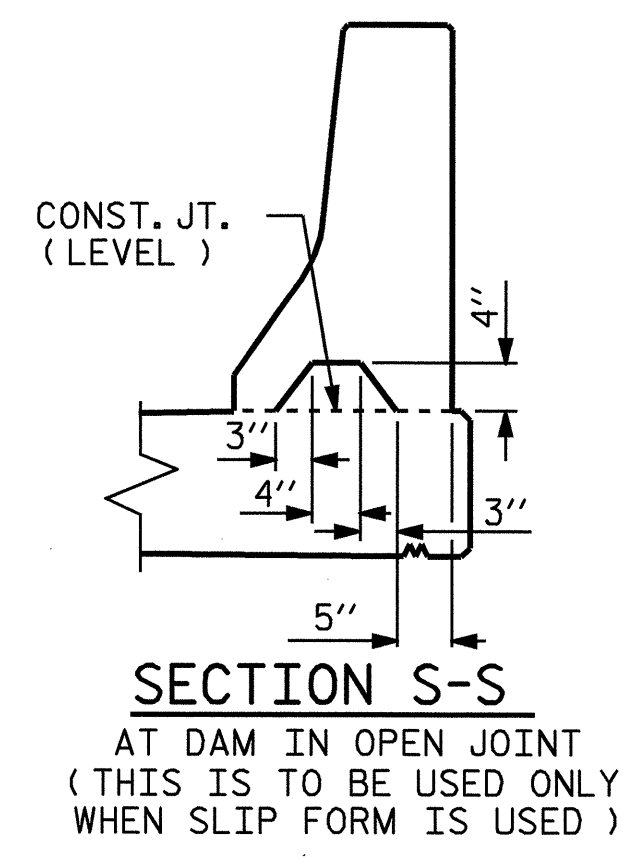
VERTICAL GROOVED CONTRACTION JOINTS, 1/2" IN DEPTH, SHALL BE TOOLED IN ALL EXPOSED FACES OF THE BARRIER RAIL AND IN ACCORDANCE WITH ARTICLE 825-10(B) OF THE STANDARD SPECIFICATIONS. THE CONTRACTION JOINT SHALL BE LOCATED AT EACH THIRD POINT BETWEEN BARRIER RAIL EXPANSION JOINTS. ONLY ONE CONTRACTION JOINT IS REQUIRED AT MIDPOINT OF BARRIER RAIL SEGMENTS LESS THAN 20 FEET IN LENGTH AND NO CONTRACTION JOINTS ARE REQUIRED FOR THOSE SEGMENTS LESS THAN 10 FEET IN LENGTH.

#5 S1 & #5 S2 MAY BE SHIFTED SLIGHTLY AS NECESSARY TO MAINTAIN 2" COVER AT 1/2" EXPANSION JOINTS IN RAIL.



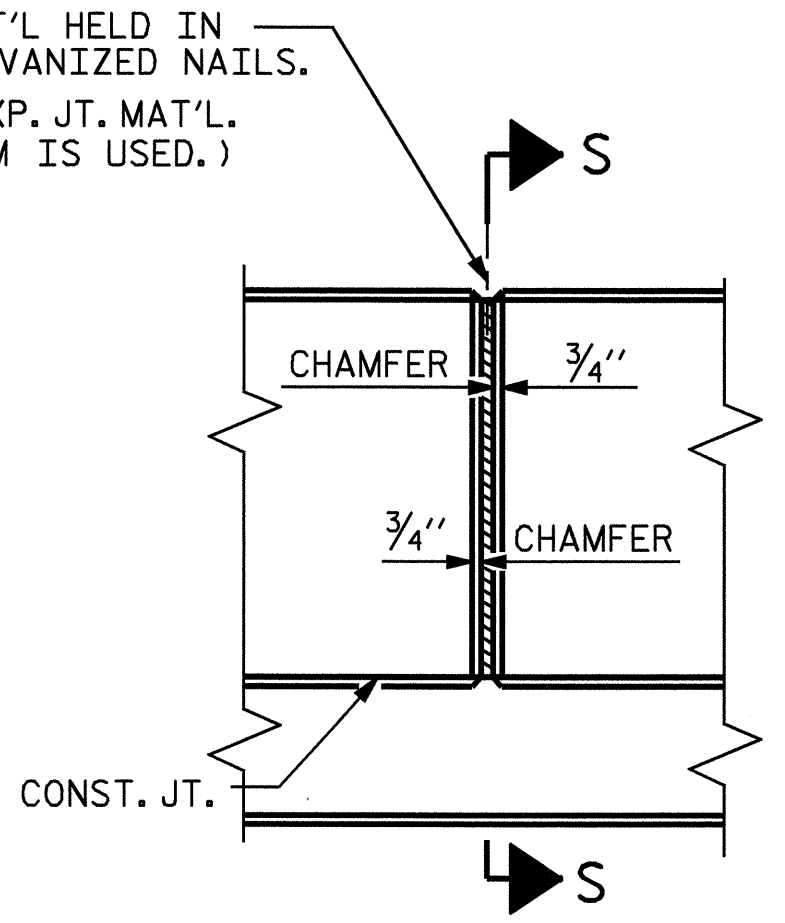
**SECTION THRU RAIL**

1/2" EXP. JT. MAT'L HELD IN PLACE WITH GALVANIZED NAILS.  
 (NOTE: OMIT EXP. JT. MAT'L. WHEN SLIP FORM IS USED.)

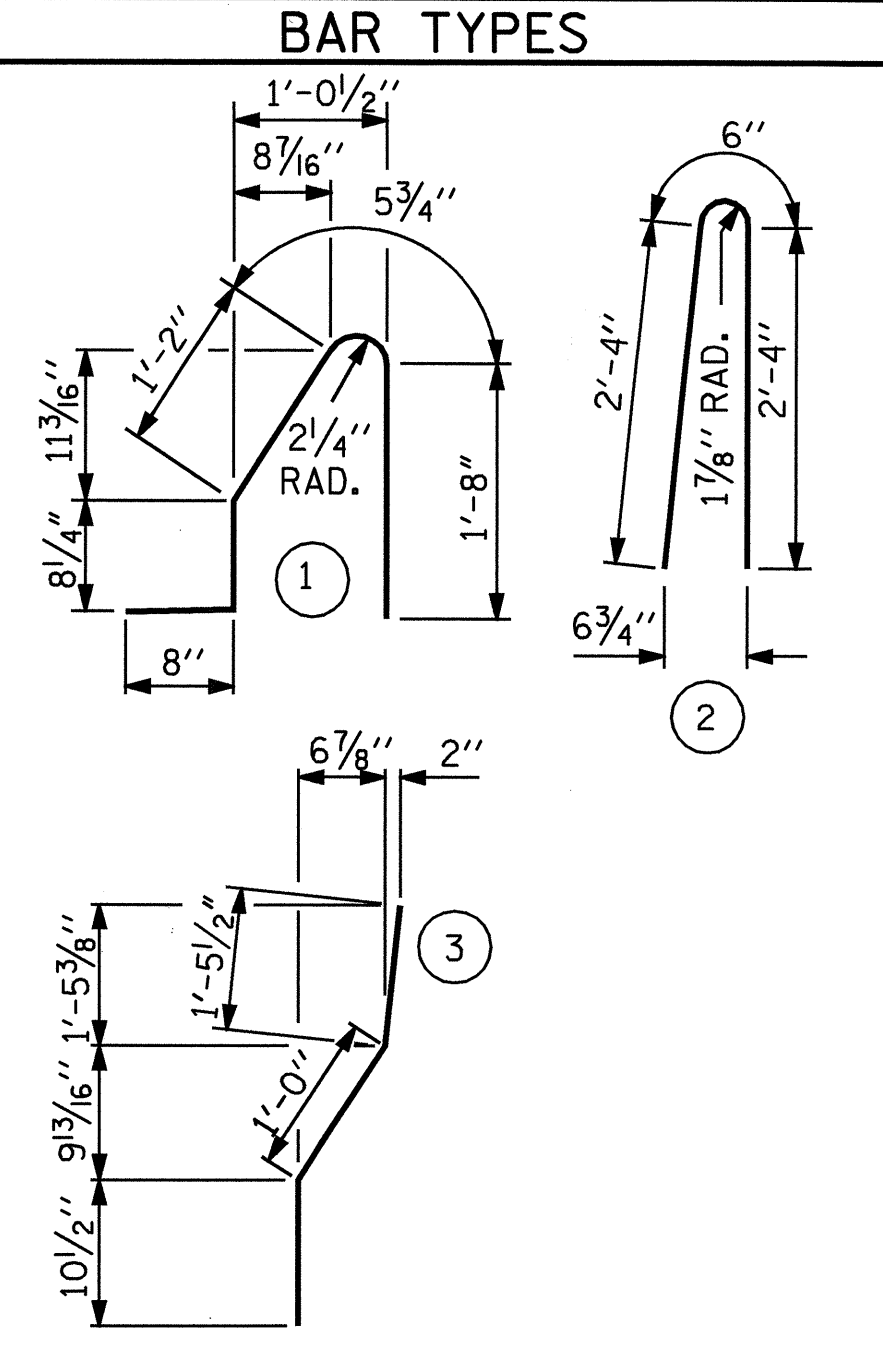


**SECTION S-S**

AT DAM IN OPEN JOINT  
 (THIS IS TO BE USED ONLY WHEN SLIP FORM IS USED)



**ELEVATION AT EXPANSION JOINTS**  
**BARRIER RAIL DETAILS**

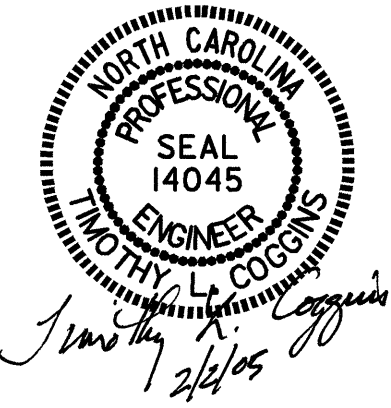


ALL BAR DIMENSIONS ARE OUT TO OUT

BILL OF MATERIAL					
FOR CONCRETE BARRIER RAIL ONLY					
BAR NO.	NO.	SIZE	TYPE	LENGTH	WEIGHT
* B1	70	#5	STR	25'-2"	1837
* S1	246	#5	1	4'-8"	1197
* S2	246	#5	2	5'-2"	1326
* S3	12	#5	3	3'-4"	42
* S4	12	#5	STR	3'-2"	40
* EPOXY COATED REINFORCING STEEL 4442 LBS.					
CLASS AA CONCRETE 25.6 CU. YDS.					
CONCRETE BARRIER RAIL 255.83 LIN. FT.					

PROJECT NO. B-4327  
WILSON COUNTY  
 STATION: 23+80.00 -L-

STATE OF NORTH CAROLINA DEPARTMENT OF TRANSPORTATION RALEIGH					
STANDARD CONCRETE BARRIER RAIL					
OCTOBER			1987		
REVISIONS					
NO.	BY:	DATE:	NO.	BY:	DATE:
1			3		
2			4		



ASSEMBLED BY : PEGGY ADKINS	DATE : 10-04
CHECKED BY : M.M. PARSONS	DATE : 12-04
DRAWN BY : ARB	5/87
CHECKED BY : SJD	9/87
REV. 8/16/99	RWW/LES
REV. 10/17/00	RWW/LES
REV. 5/7/03R	RWW/JTE