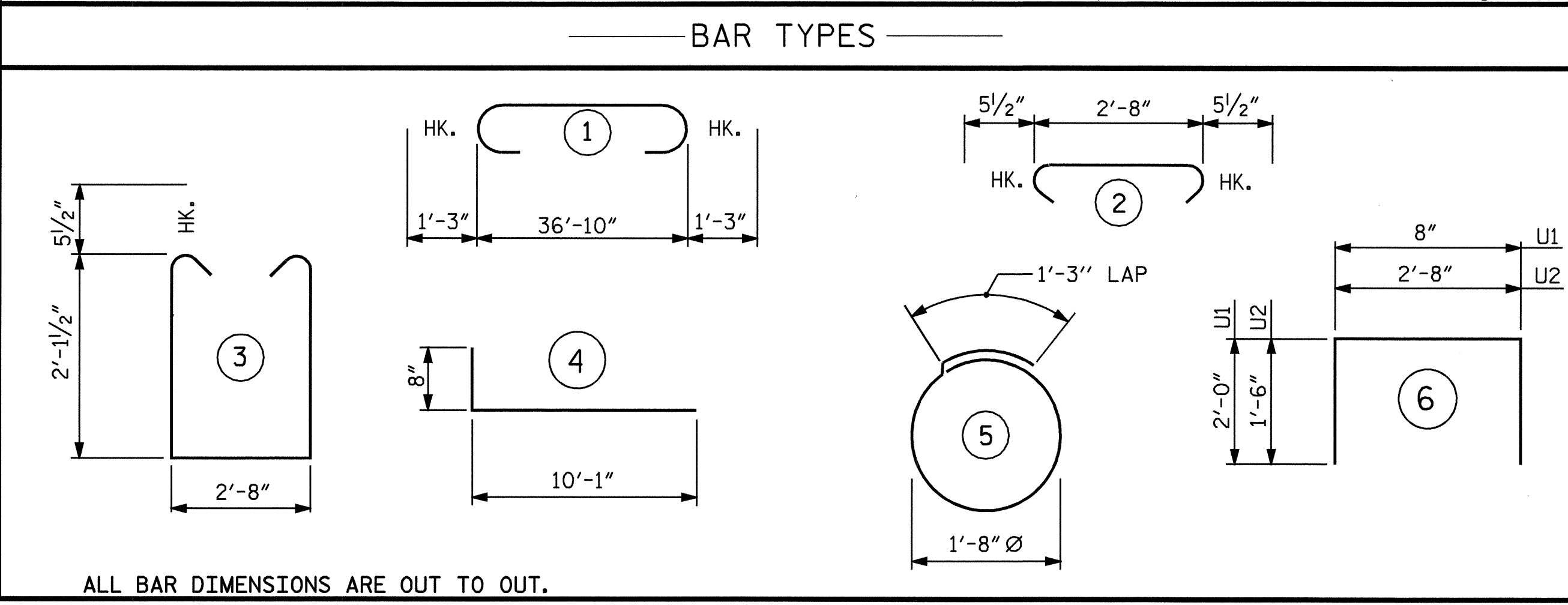
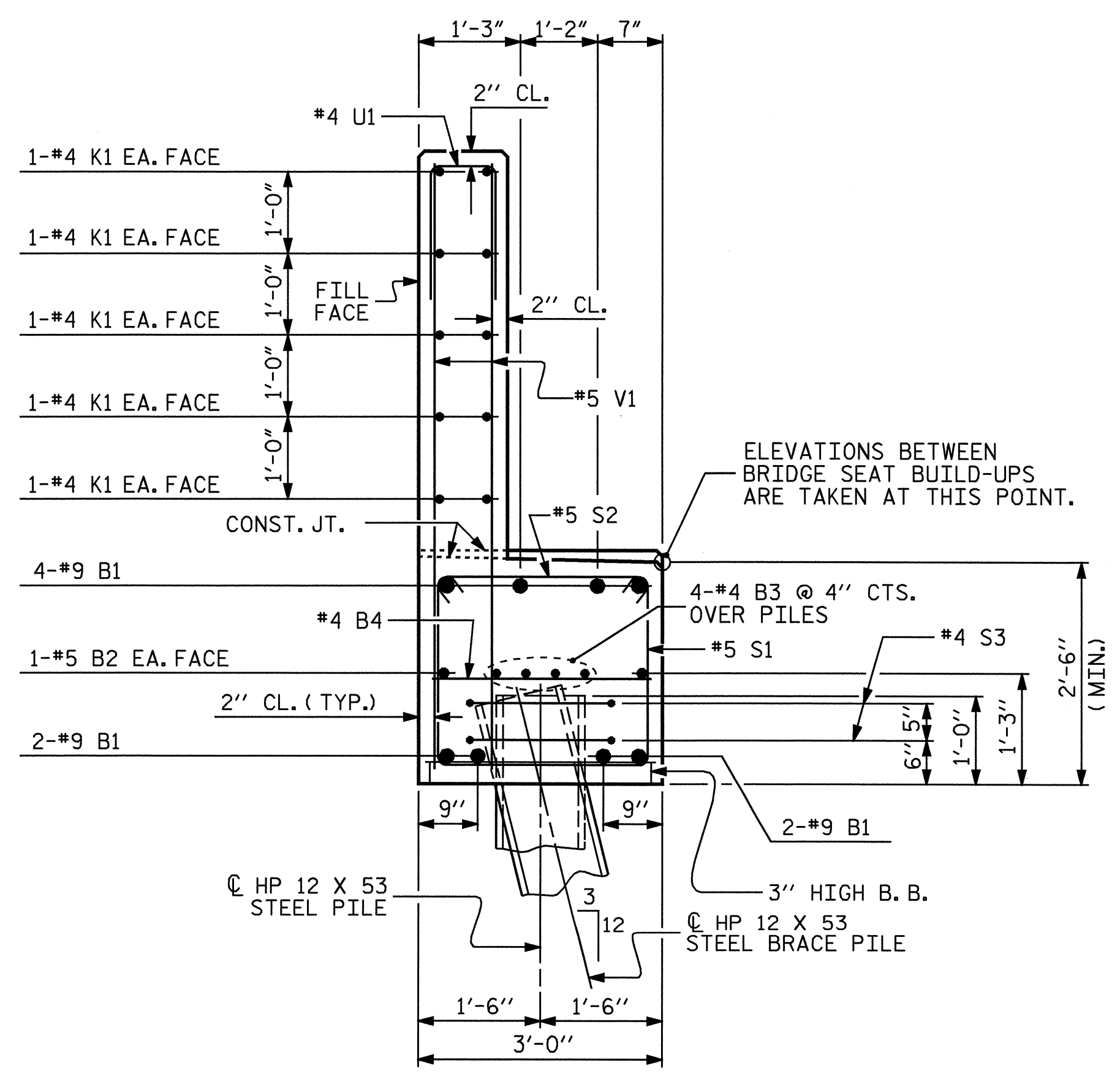


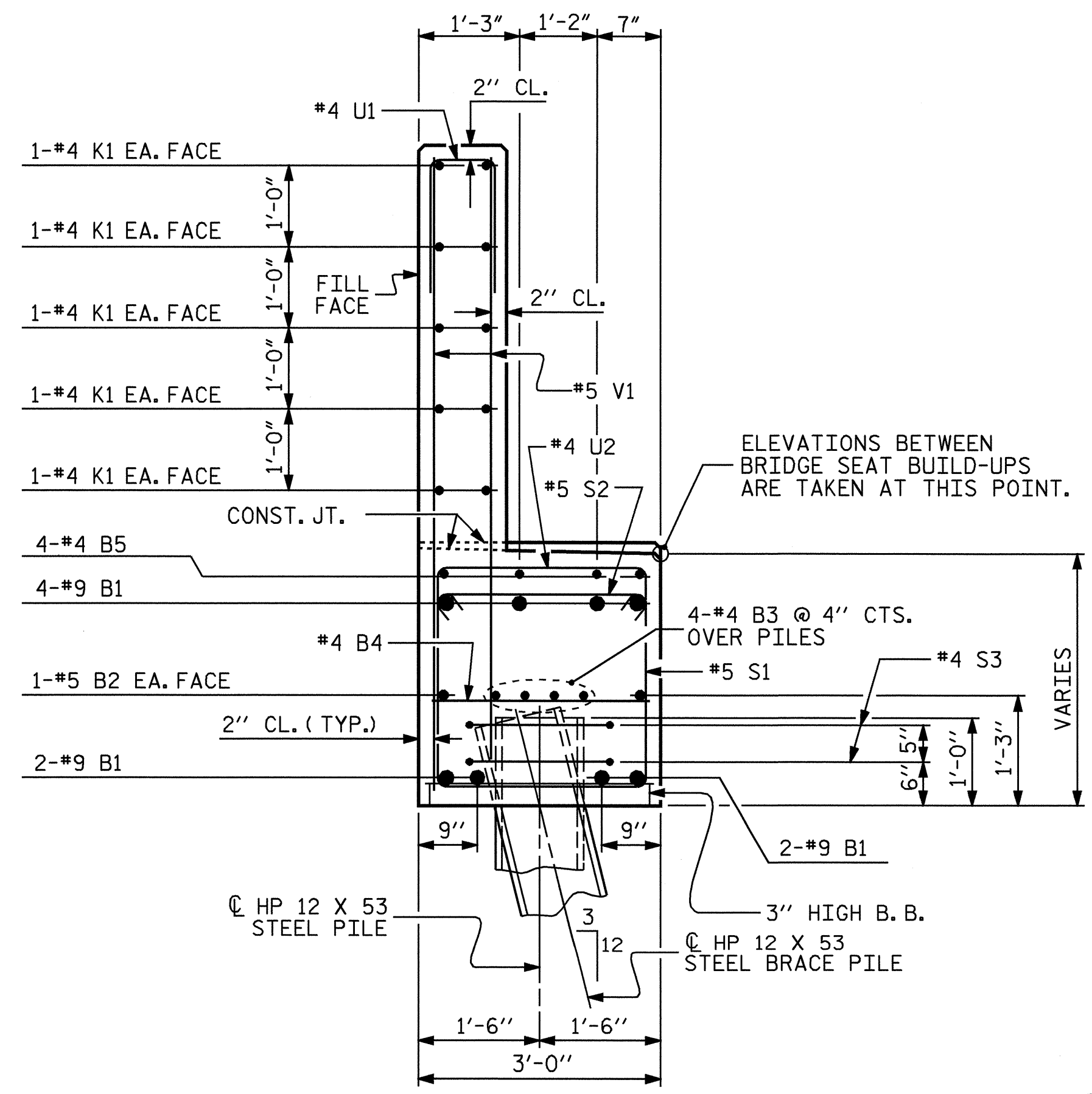
\* POSITION OF PILE DURING WELDING.  
**PILE SPLICE DETAILS**



BILL OF MATERIAL				
END BENT #2				
BAR	NO.	SIZE	TYPE	WEIGHT
B1	8	9	1	1070
B2	2	5	STR	77
B3	8	4	STR	105
B4	10	4	STR	18
B5	4	4	STR	28
H1	40	6	4	646
K1	20	4	STR	263
K2	8	4	STR	14
S1	34	5	3	278
S2	34	5	2	127
S3	18	4	5	78
U1	32	4	6	100
U2	7	4	6	26
V1	64	5	STR	439
V2	36	5	STR	300
V3	20	5	STR	172
TOTAL REINFORCING STEEL				3741 LBS.
CLASS "A" CONCRETE BREAKDOWN				
POUR #1 CAP & LOWER WING				12.4 CU. YD.
POUR #2 BACKWALL & UPPER WING				10.7 CU. YD.
TOTAL CLASS "A" CONCRETE				23.1 CU. YD.
HP 12 X 53 STEEL PILES				360 LIN. FT.
NO. 9				



**SECTION A-A**



**SECTION B-B**

PROJECT NO. B-4327  
WILSON COUNTY  
STATION: 23+80.00 -L-

SHEET 3 OF 3  
STATE OF NORTH CAROLINA  
DEPARTMENT OF TRANSPORTATION  
RALEIGH  
SUBSTRUCTURE  
END BENT #2



DRAWN BY : PEGGY ADKINS DATE : 11-04  
CHECKED BY : G. KOUCHEKI DATE : 11-04

REVISIONS						SHEET NO.
NO.	BY:	DATE:	NO.	BY:	DATE:	S-19
1			3			TOTAL SHEETS
2			4			24