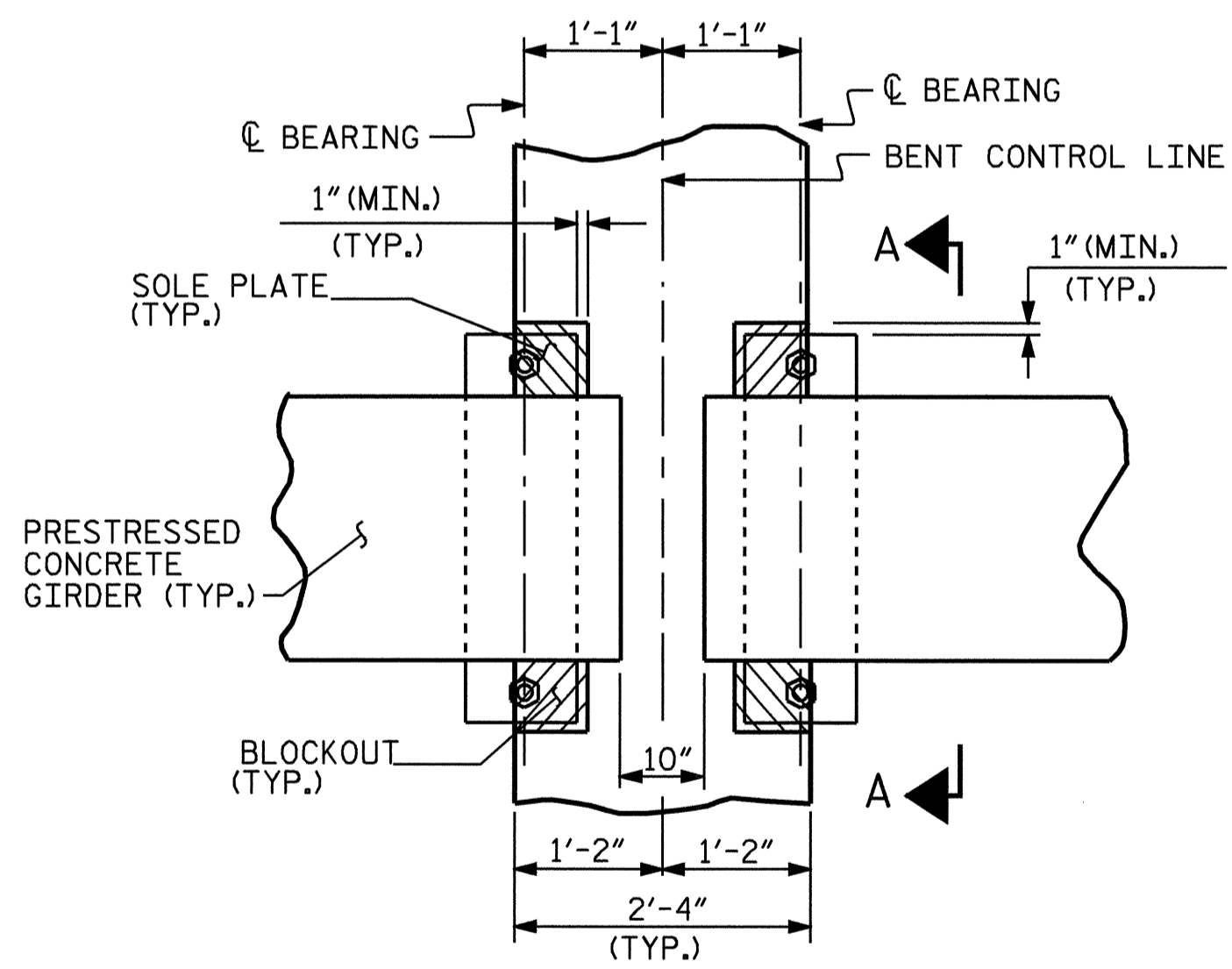
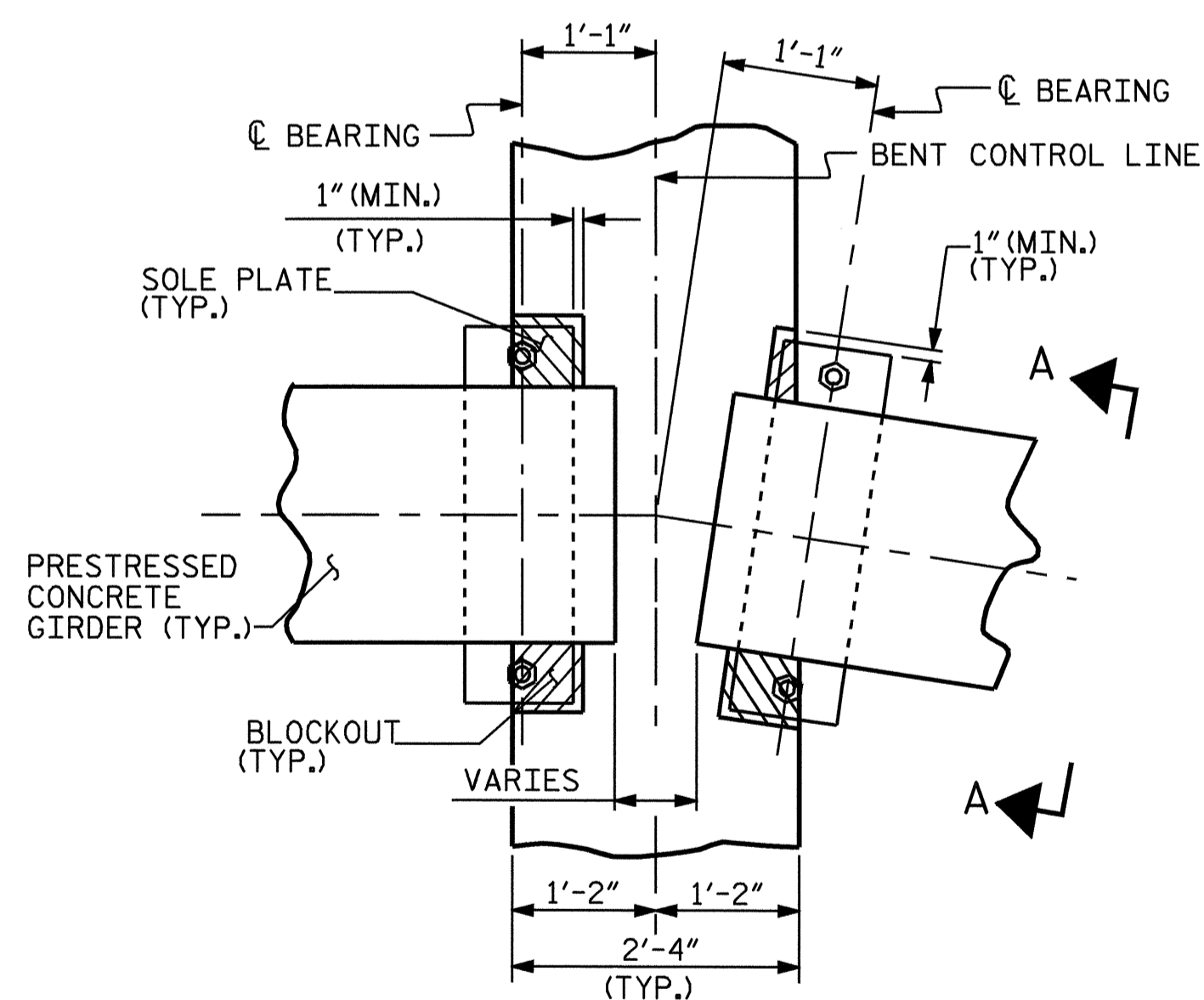


PLAN OF DIAPHRAGMS

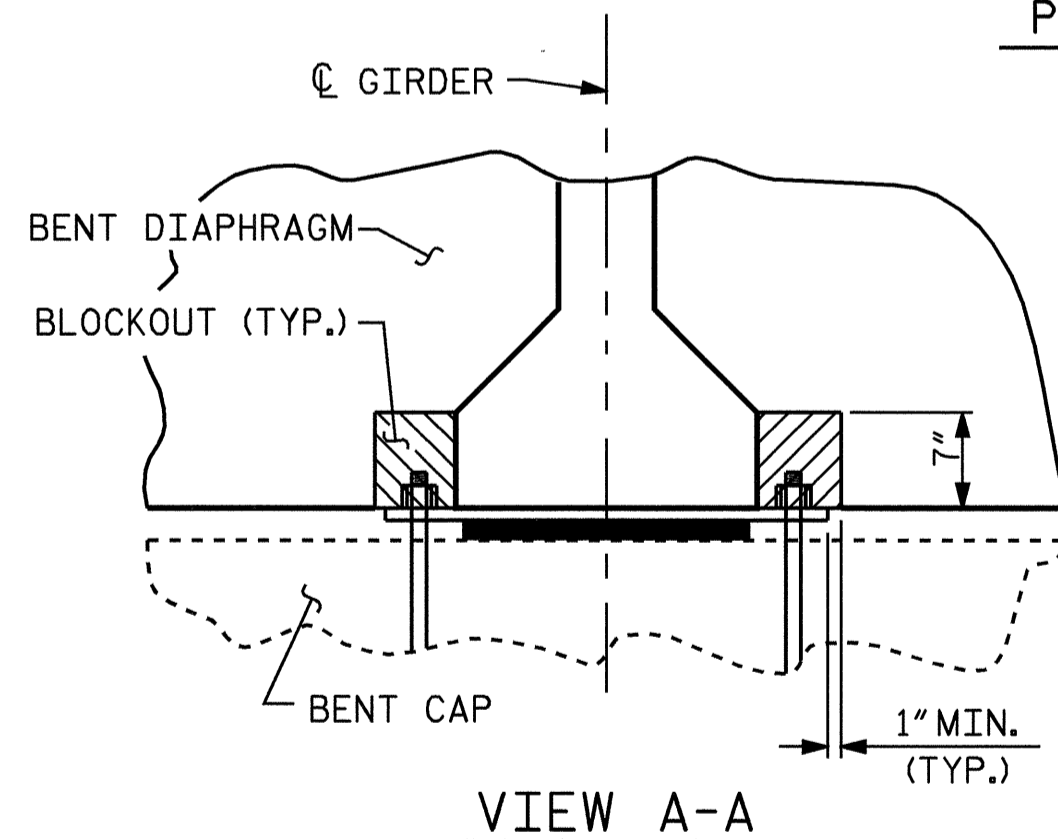


PLAN @ BENT No. 1

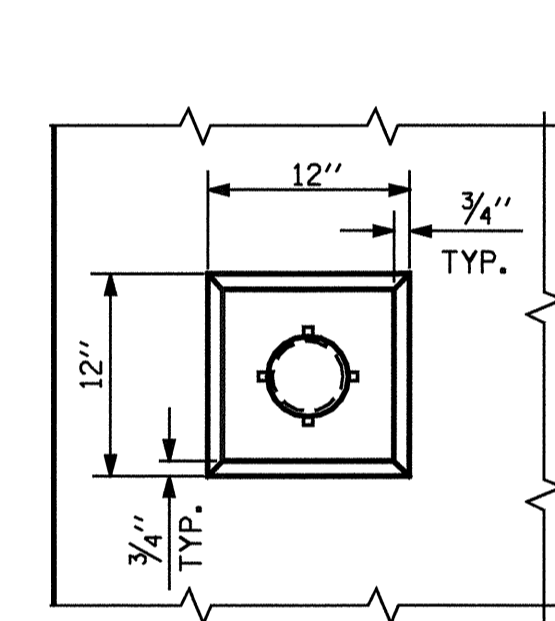


PLAN @ BENT No. 2

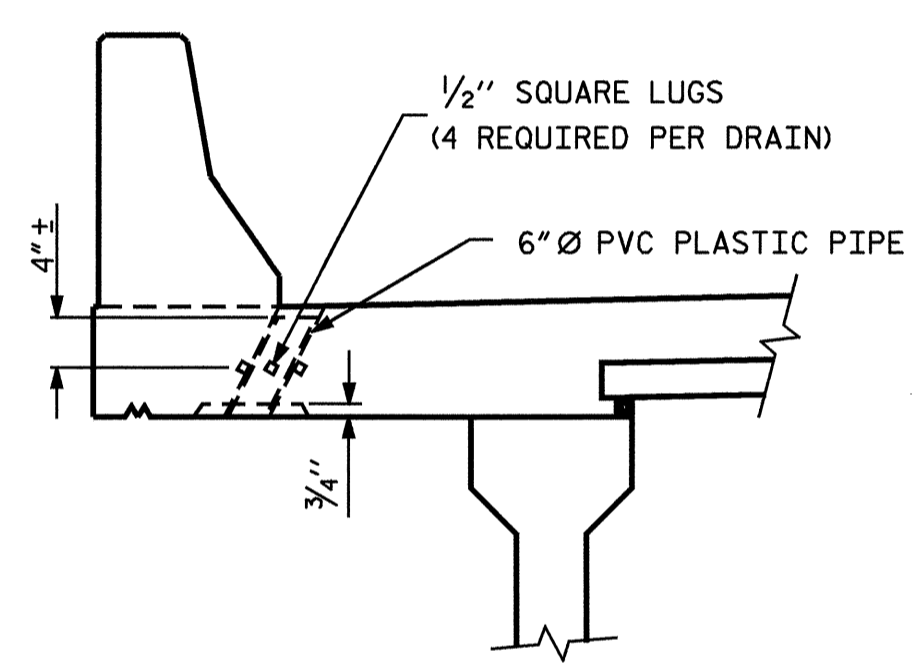
BENT DIAPHRAGM BLOCKOUT DETAIL



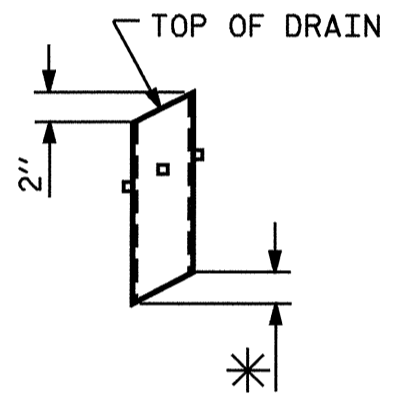
VIEW A-A



PLAN OF RECESS



ELEVATION



PIPE DETAIL

TOP OF FLOOR DRAINS TO BE SET 3/8" BELOW SURFACE OF SLAB.
 4 - 1/2" SQUARE LUGS TO BE GLUED TO THE P.V.C. PLASTIC PIPE AT EQUAL SPACES AROUND THE PIPE DRAIN APPROXIMATELY 4" FROM THE TOP OF THE PIPE.
 THE 6" Ø PVC PLASTIC PIPE AND FITTINGS SHALL BE SCHEDULE 40 AND CONFORM TO ASTM D1785.

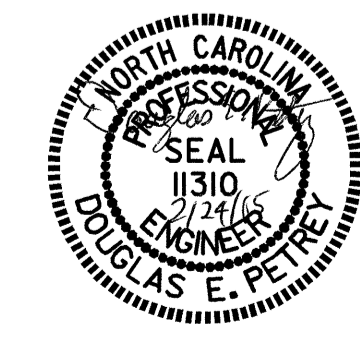
PIPE DRAIN DETAILS

PROJECT NO. B-3922
WATAUGA COUNTY
 STATION: 11+06.50 -L-

SHEET 3 OF 3

STATE OF NORTH CAROLINA
 DEPARTMENT OF TRANSPORTATION
 RALEIGH

SUPERSTRUCTURE
 TYPICAL SECTION
 DETAILS



DRAWN BY : A.R.CHESSON DATE : 7-04
 CHECKED BY : B.N. GRADY DATE : 9-04

REVISIONS						SHEET NO.
NO.	BY:	DATE:	NO.	BY:	DATE:	S-6
1			3			TOTAL SHEETS
2			4			41