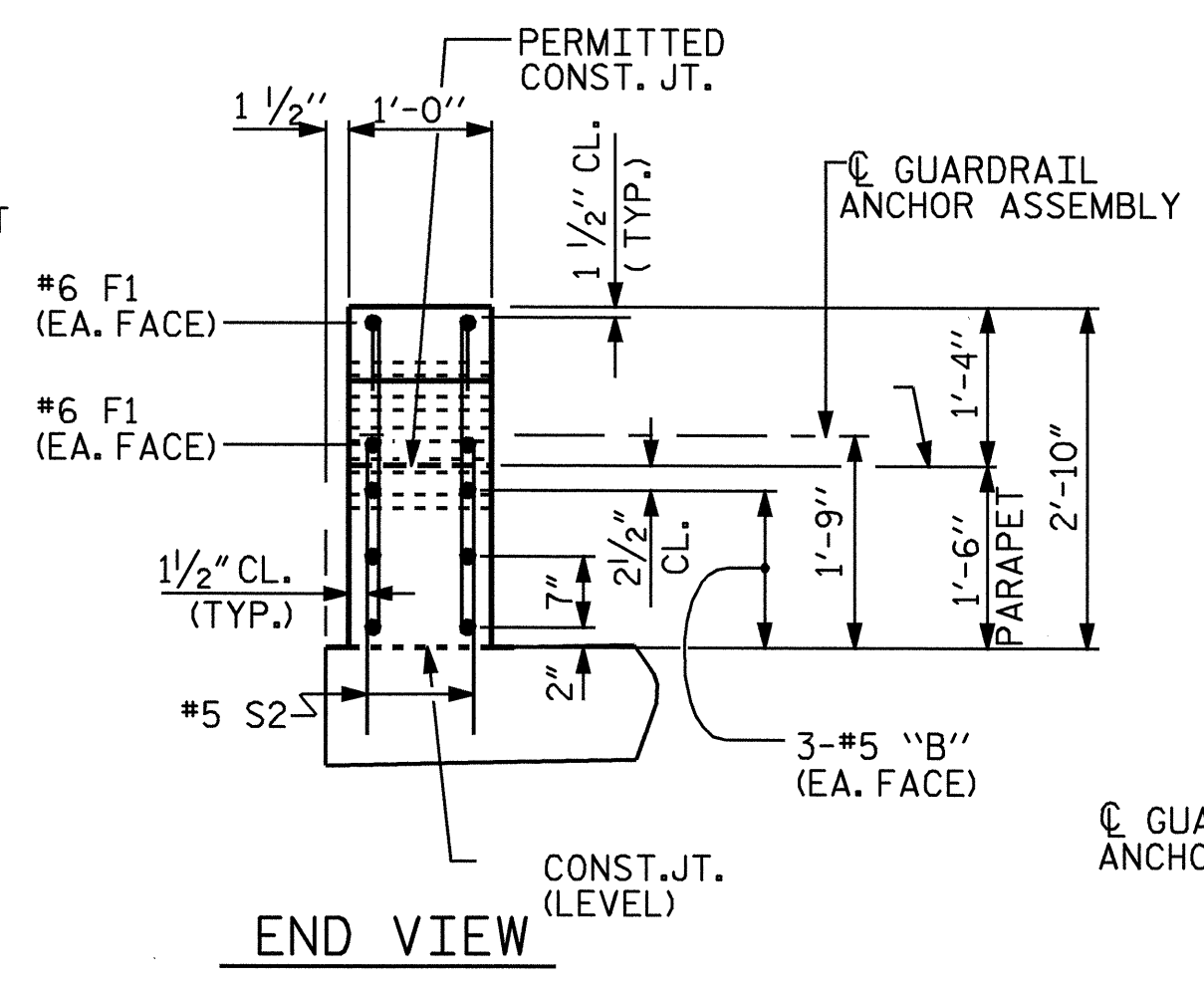
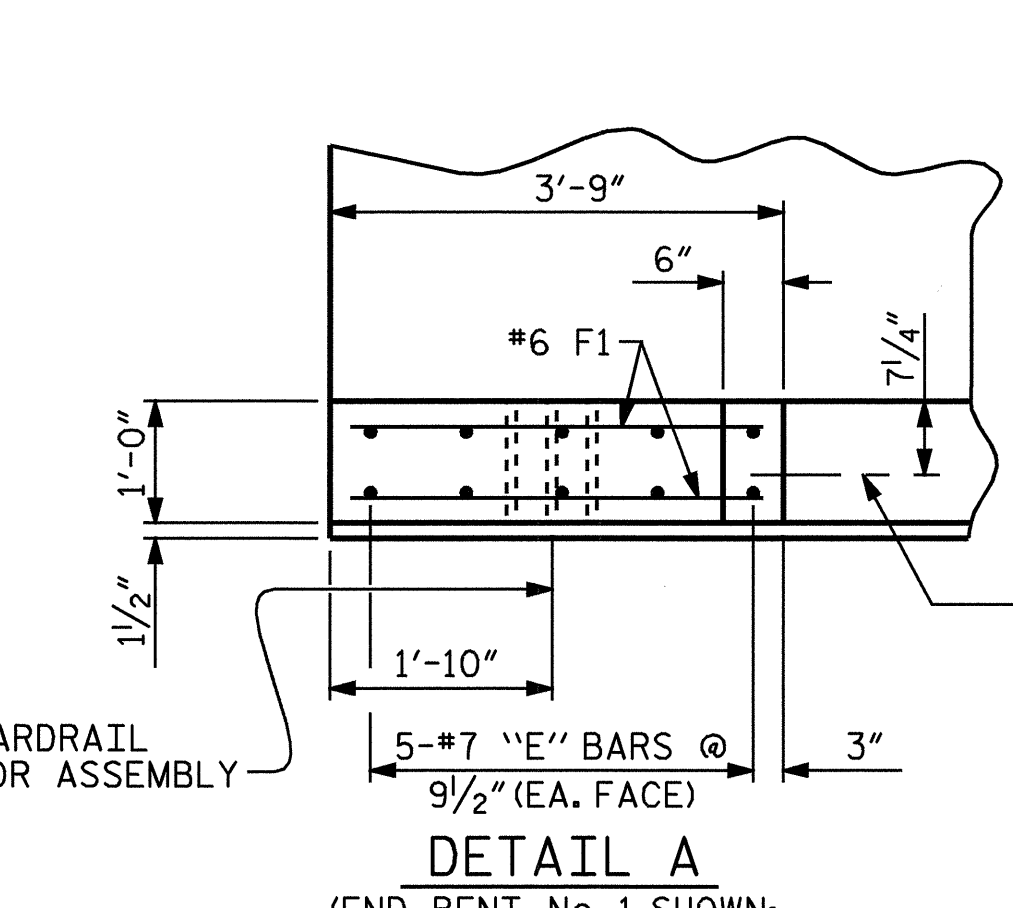


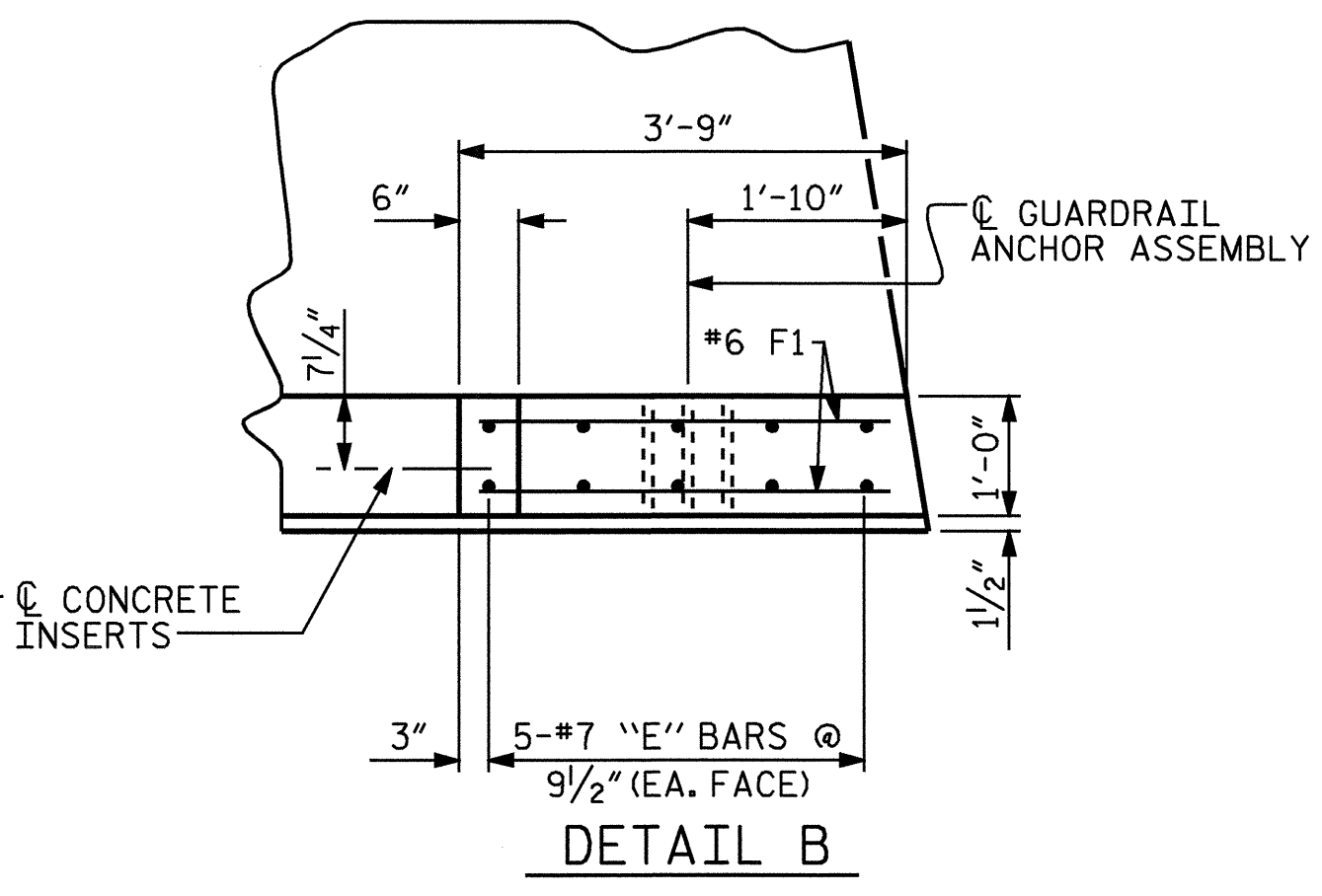
ELEVATION



END VIEW



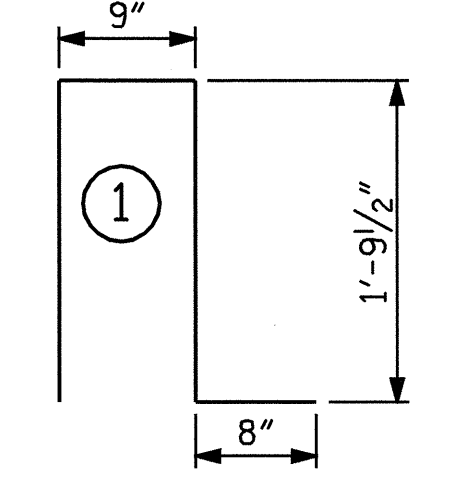
DETAIL A
(END BENT No. 1 SHOWN;
END BENT No. 2 SIMILAR)



DETAIL B

END POST DETAILS

BAR TYPE



BAR DIMENSIONS ARE OUT TO OUT

BILL OF MATERIAL

FOR TWO PARAPETS AND FOUR END POSTS FOR ONE BAR METAL RAIL

BAR	NO.	SIZE	TYPE	LENGTH	WEIGHT
*E1	8	#7	STR	2'-0"	33
*E2	8	#7	STR	2'-2"	35
*E3	8	#7	STR	2'-4"	38
*E4	8	#7	STR	2'-6"	41
*E5	8	#7	STR	2'-7"	42
*F1	16	#6	STR	3'-5"	82
*B1	12	#5	STR	23'-6"	294
*B2	36	#5	STR	21'-3"	798
*B3	12	#5	STR	19'-1"	239
*B4	12	#5	STR	19'-4"	242
*B5	12	#5	STR	24'-7"	308
*S1	292	#5	1	5'-0"	1523
*S2	32	#5	STR	2'-0"	67

* THESE BARS ARE EPOXY COATED.
EPOXY COATED REINF. STEEL = 3742 LBS

CLASS AA CONCRETE TOTAL C.Y. 17.6

1'-0" X 1'-6" CONCRETE PARAPET LIN. FT. 306.33

NOTES

THE CONCRETE PARAPETS IN A CONTINUOUS UNIT SHALL NOT BE CAST UNTIL ALL SLAB CONCRETE IN THE UNIT HAS BEEN CAST AND HAS REACHED A MINIMUM COMPRESSIVE STRENGTH OF 3,000 PSI.

ALL REINFORCING STEEL IN CONCRETE PARAPETS SHALL BE EPOXY COATED.

THE JOINT IN THE DECK SHALL BE SAWS PRIOR TO CASTING THE CONCRETE PARAPET.

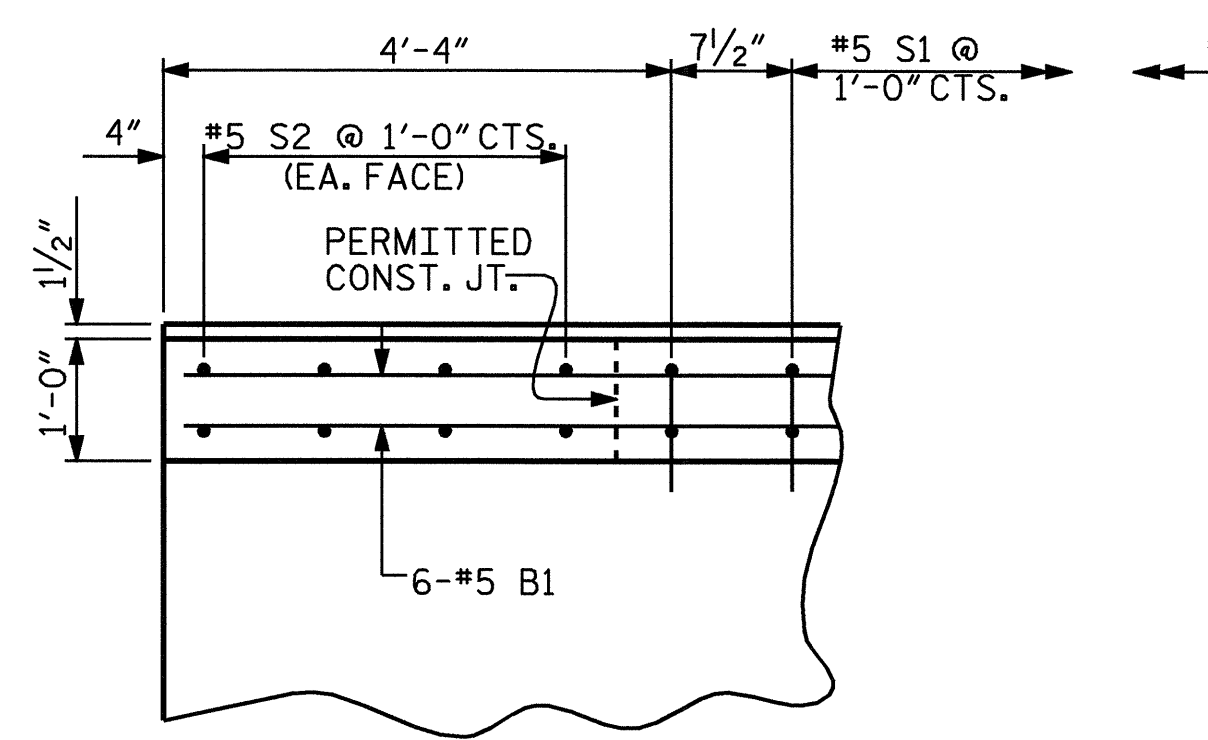
THE #5 S2 BARS SHALL BE INSTALLED USING AN ADHESIVE ANCHORING SYSTEM AFTER SAWING THE JOINT. FOR ADHESIVELY ANCHORED BOLTS OR DOWELS, SEE SPECIAL PROVISIONS. THE YIELD LOAD OF THE #5 S2 BARS IS 18.6 KIPS. FIELD TESTING OF THE ADHESIVE BONDING SYSTEM IS NOT REQUIRED.

FOR THE DETAILS OF THE CONCRETE INSERTS, SEE "RAIL POST SPACINGS AND END OF RAIL DETAILS" SHEET.

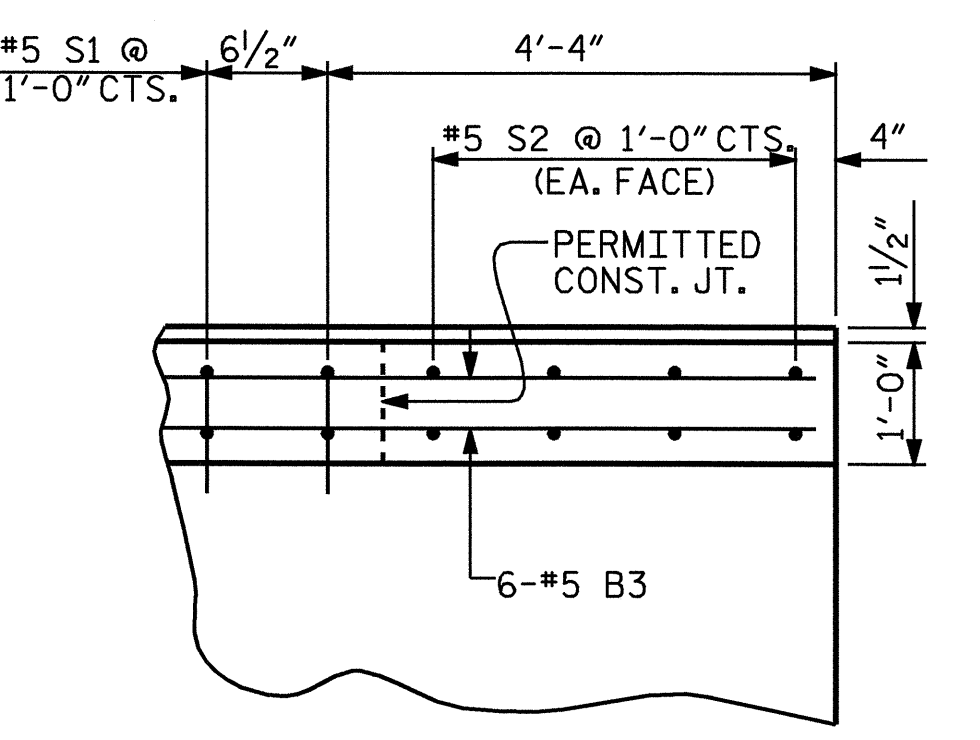
FOR DETAILS OF GUARDRAIL ANCHOR ASSEMBLIES, SEE "GUARDRAIL ANCHORAGE DETAILS FOR METAL RAILS" SHEET.

THE REINFORCING STEEL MAY BE SHIFTED SLIGHTLY AS NECESSARY TO CLEAR THE ANCHOR ASSEMBLY FOR ONE BAR METAL RAIL.

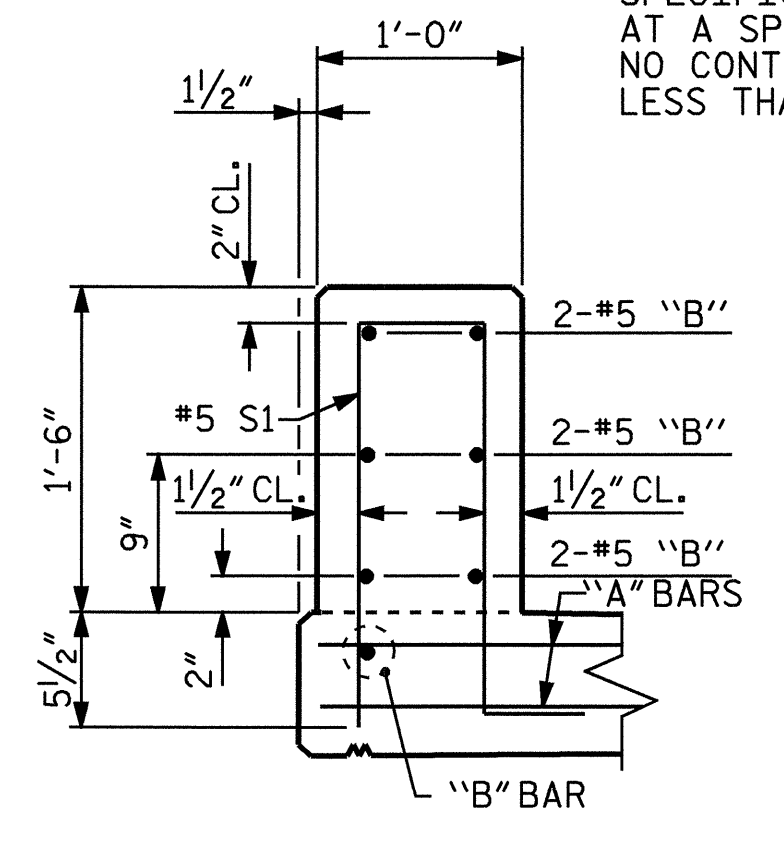
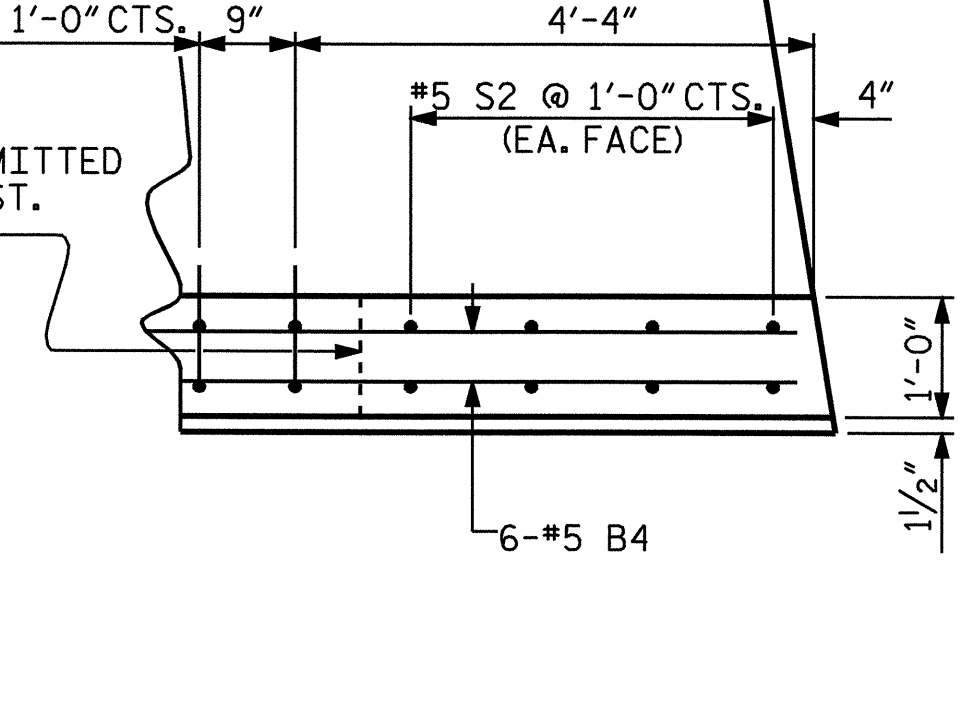
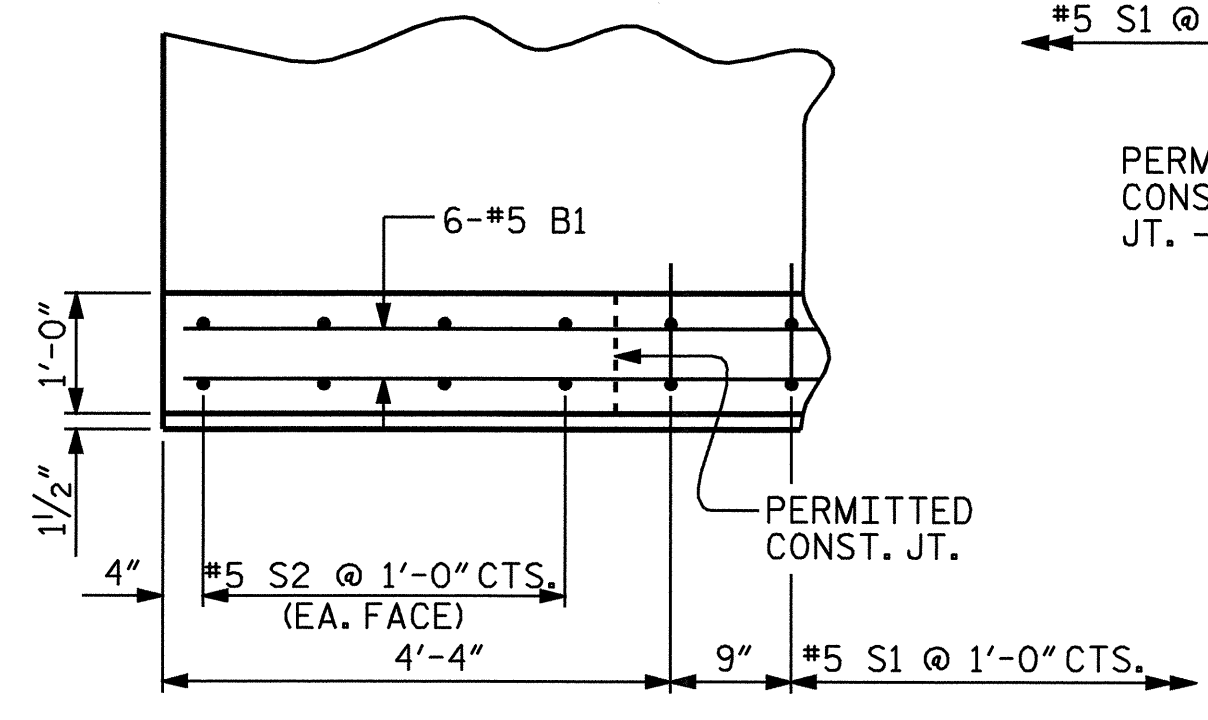
GROOVED CONTRACTION JOINTS, 1/2" IN DEPTH, SHALL BE TOOLED IN ALL EXPOSED FACES OF THE PARAPET AND IN ACCORDANCE WITH ARTICLE 825-10(B) OF THE STANDARD SPECIFICATIONS. THE CONTRACTION JOINTS SHALL BE LOCATED AT A SPACING OF 8 FT. TO 10 FT. BETWEEN EXPANSION JOINTS. NO CONTRACTION JOINTS WILL BE REQUIRED FOR SEGMENTS LESS THAN 10 FT. IN LENGTH.



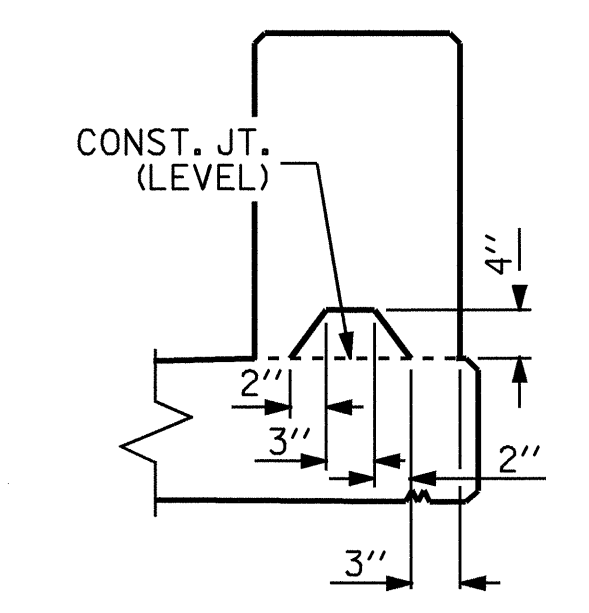
PLAN @ END BENT No.1



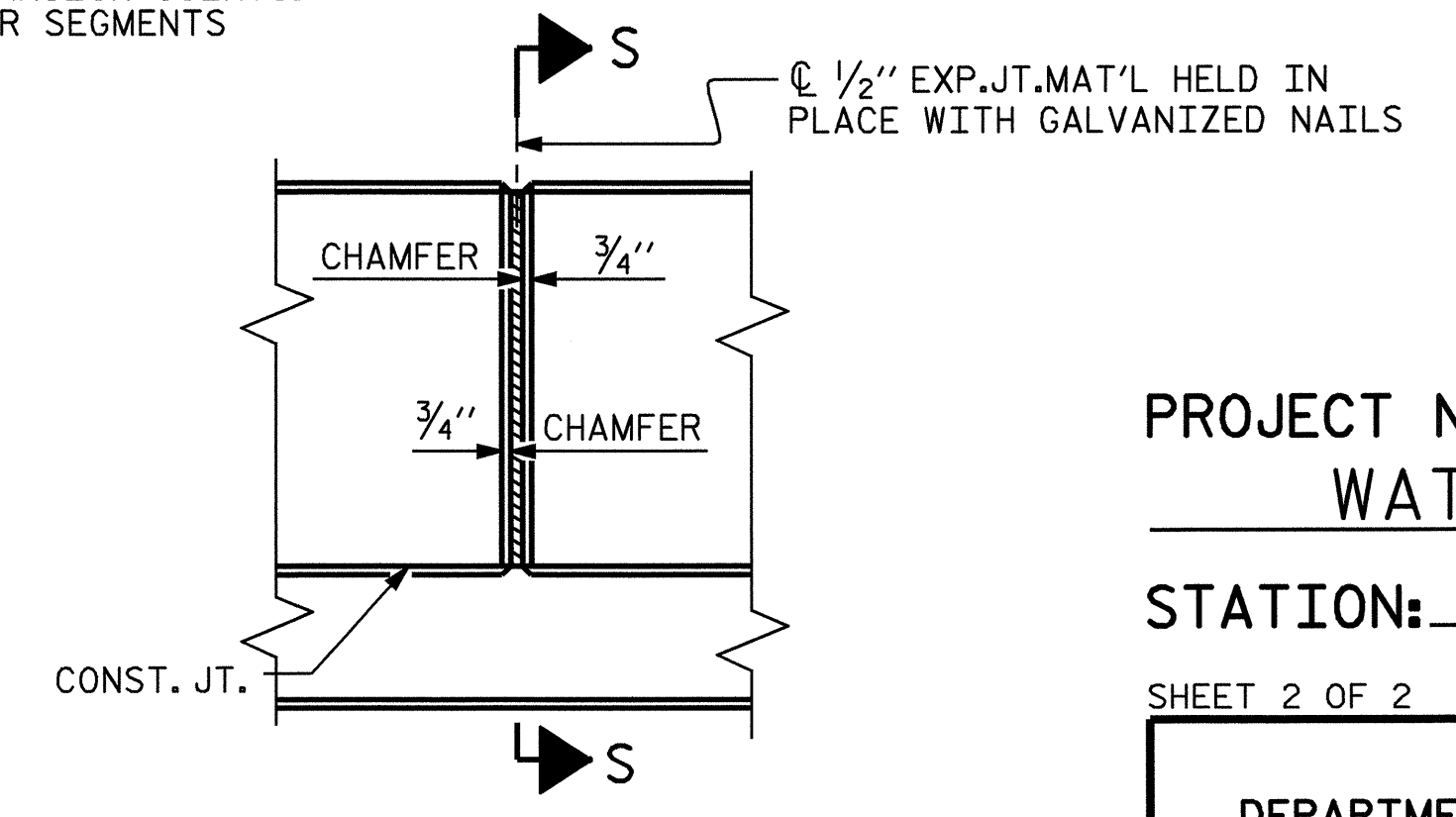
PLAN @ END BENT No.2



SECTION THRU PARAPET



SECTION S-S
AT DAM IN OPEN JOINT
(THIS IS TO BE USED ONLY
WHEN SLIP FORM IS USED)



ELEVATION AT EXPANSION JOINTS
EMIT EXPANSION JT. MAT'L WHEN SLIP FORM IS USED)

ASSEMBLED BY : A.R.CHESSON DATE : 7-04
CHECKED BY : B.N.GRADY DATE : 9-04
DRAWN BY : LES 8/01
CHECKED BY : RDR 8/01



PROJECT NO. B-3922
WATAUGA COUNTY
STATION: 11+06.50 -L-
SHEET 2 OF 2

REVISIONS					SHEET NO.
NO.	BY:	DATE:	NO.	BY:	DATE:
1			3		
2			4		

STATE OF NORTH CAROLINA
DEPARTMENT OF TRANSPORTATION
RALEIGH

**CONCRETE PARAPET
DETAILS**

TOTAL SHEETS 41