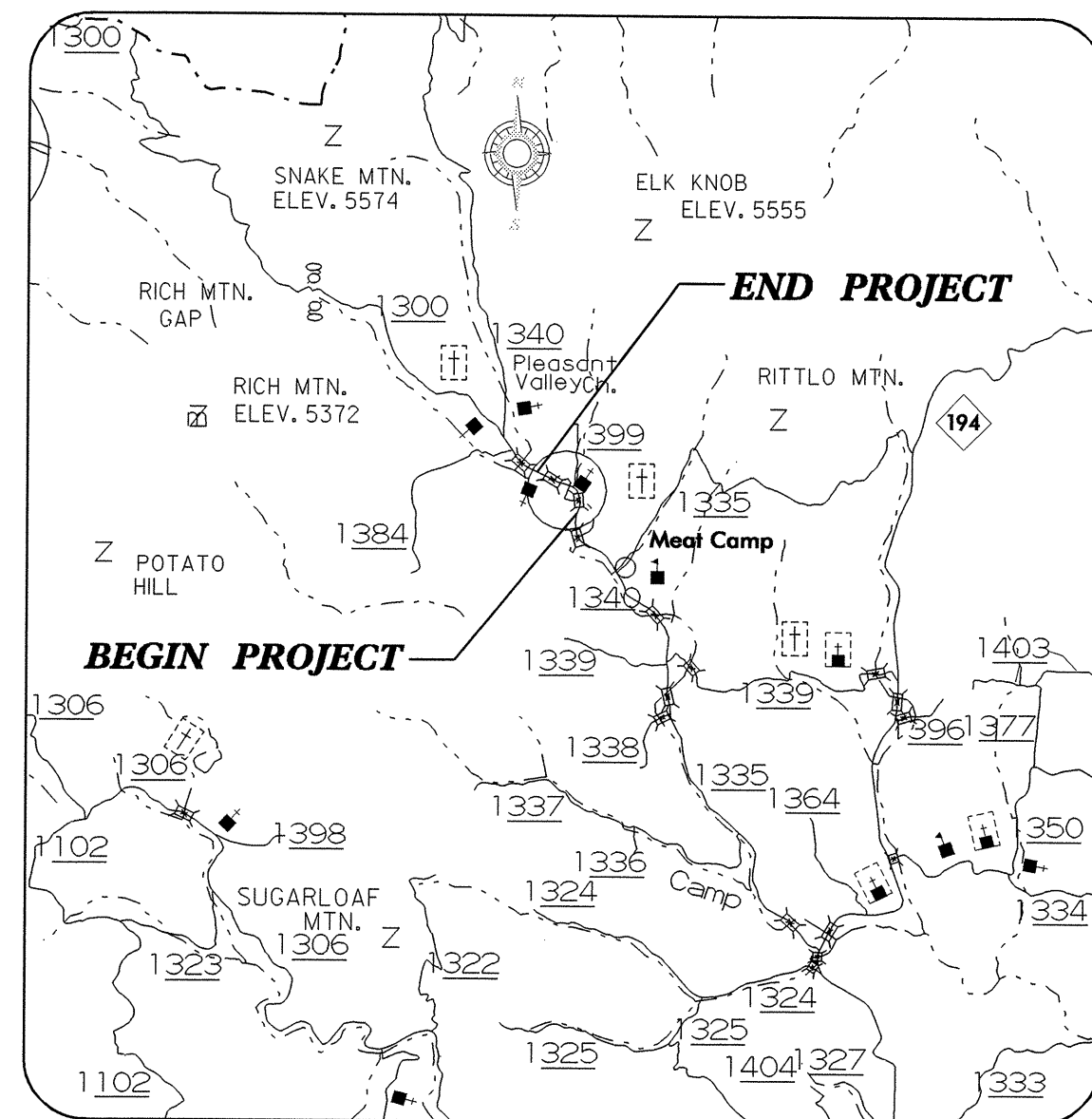


See Sheet 1-A For Index of Sheets
See Sheet 1-B For Conventional Symbols



VICINITY MAP

STATE OF NORTH CAROLINA
DIVISION OF HIGHWAYS

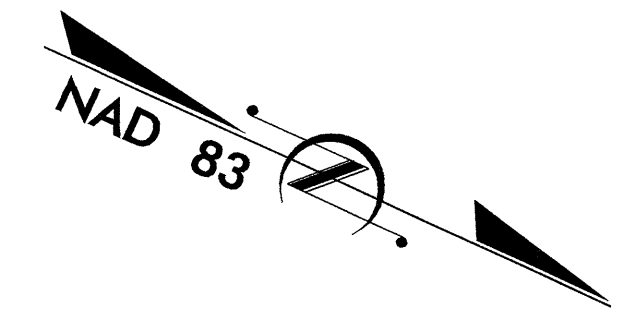
**UTILITY CONSTRUCTION PLANS
WATAUGA COUNTY**

LOCATION: BRIDGE Nos. 35 & 36 OVER MEAT CAMP CREEK ON SR 1340

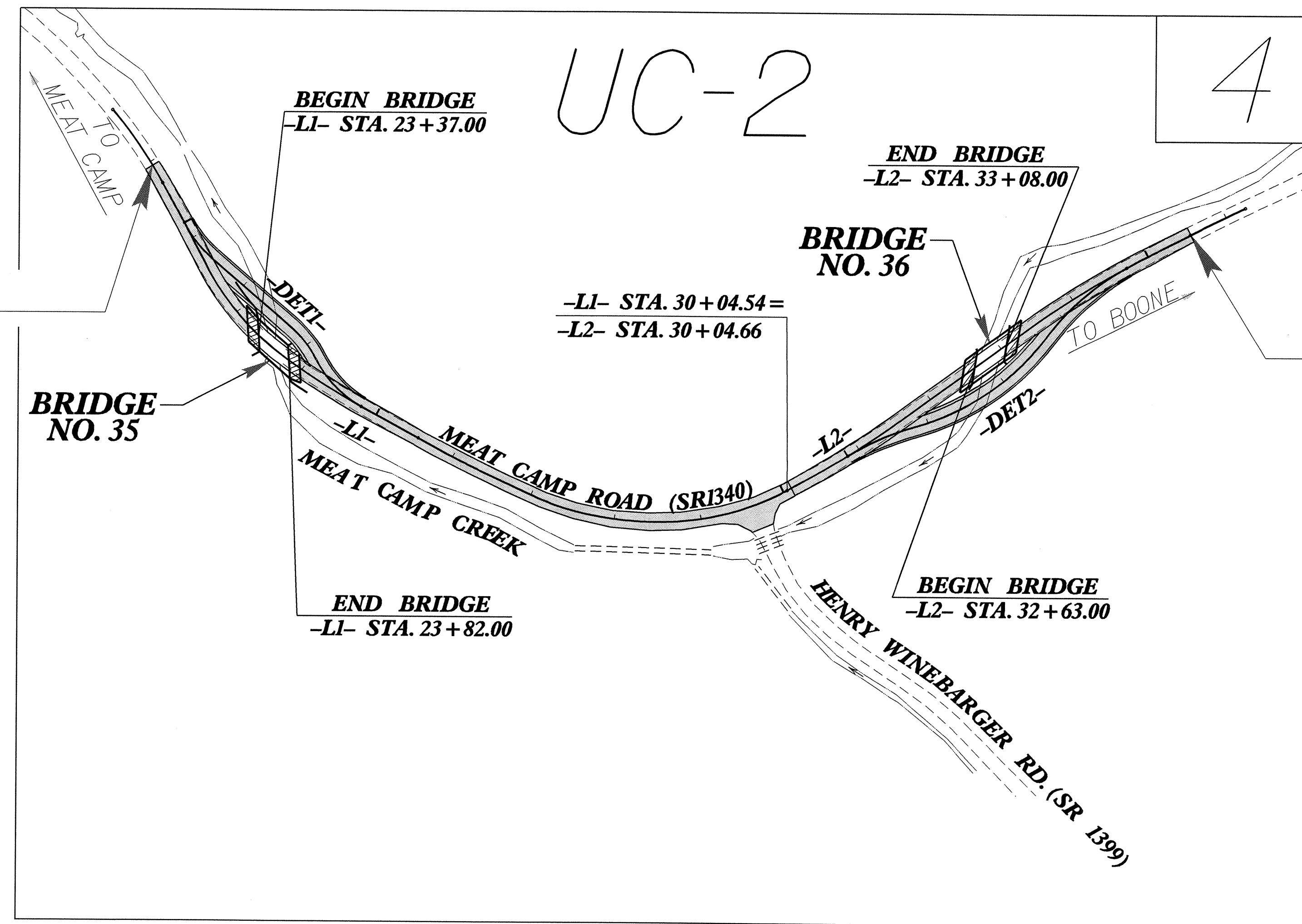
TYPE OF WORK: INSTALL 6" INCASTMENT
STEEL PIPE

T.I.P. NO.	SHEET NO.
B-3926	UC-1

TIP: B-3926



STA. 21+05.00 -L1- BEGIN
TIP PROJECT B-3926

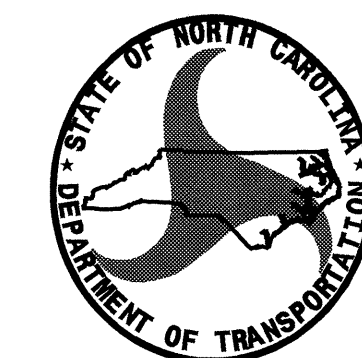


STA. 35+55.00 -L2- END
TIP PROJECT B-3926

SHEET NO.	DESCRIPTION
UC-1	TITLE SHEET
UC-2	UTILITY CONSTRUCTION PLAN SHEET

WATER AND SEWER OWNERS ON PROJECT

- (1) WATER LINE, Mrs Wilcox
- (2)



PREPARED IN THE OFFICE OF:
DIVISION OF HIGHWAYS
DESIGN SERVICES
UTILITY SECTION
1591 MAIL SERVICES CENTER
RALEIGH NC 27699-1591
PHONE (919) 250-4128
FAX (919) 250-4119

Roger Worthington, P.E. UTILITIES SECTION ENGINEER
Corey Bousquet, P.E. UTILITIES SQUAD LEADER PROJECT ENGINEER
Jamshid Hafshejani UTILITIES PROJECT DESIGNER