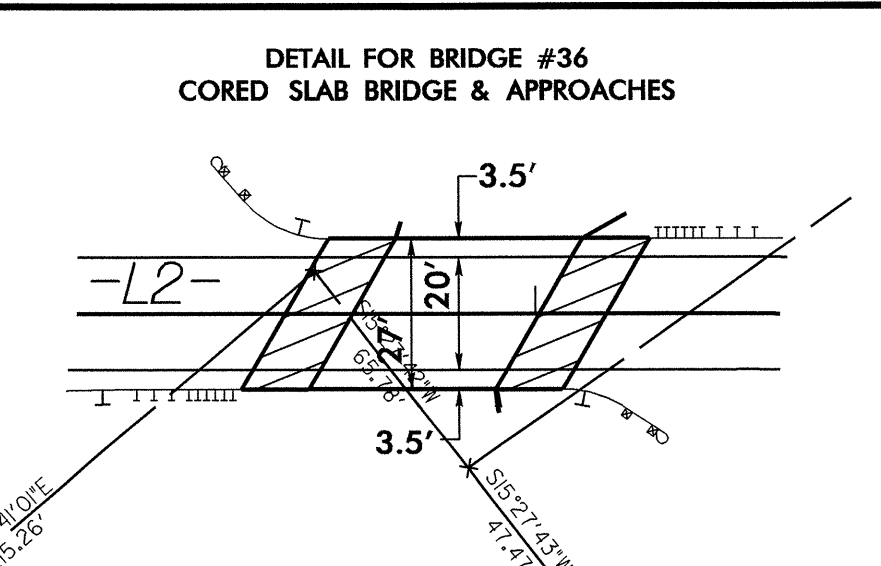
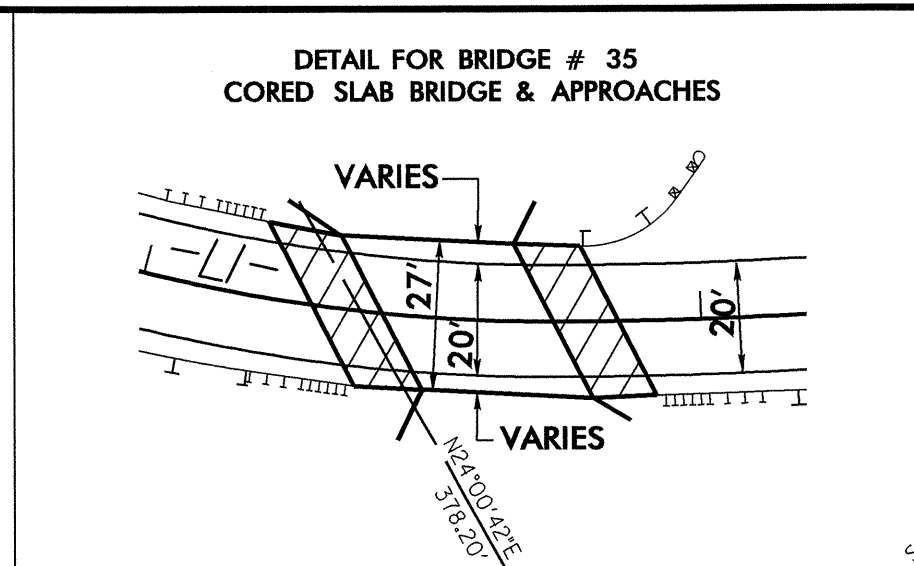


8/17/99

25-OCT-2004 09:00
C:\pdp\B3926-UTL\UC2.dgn
Utilities\Reg\UC2.dwg
ALL DIMENSIONS IN FEET

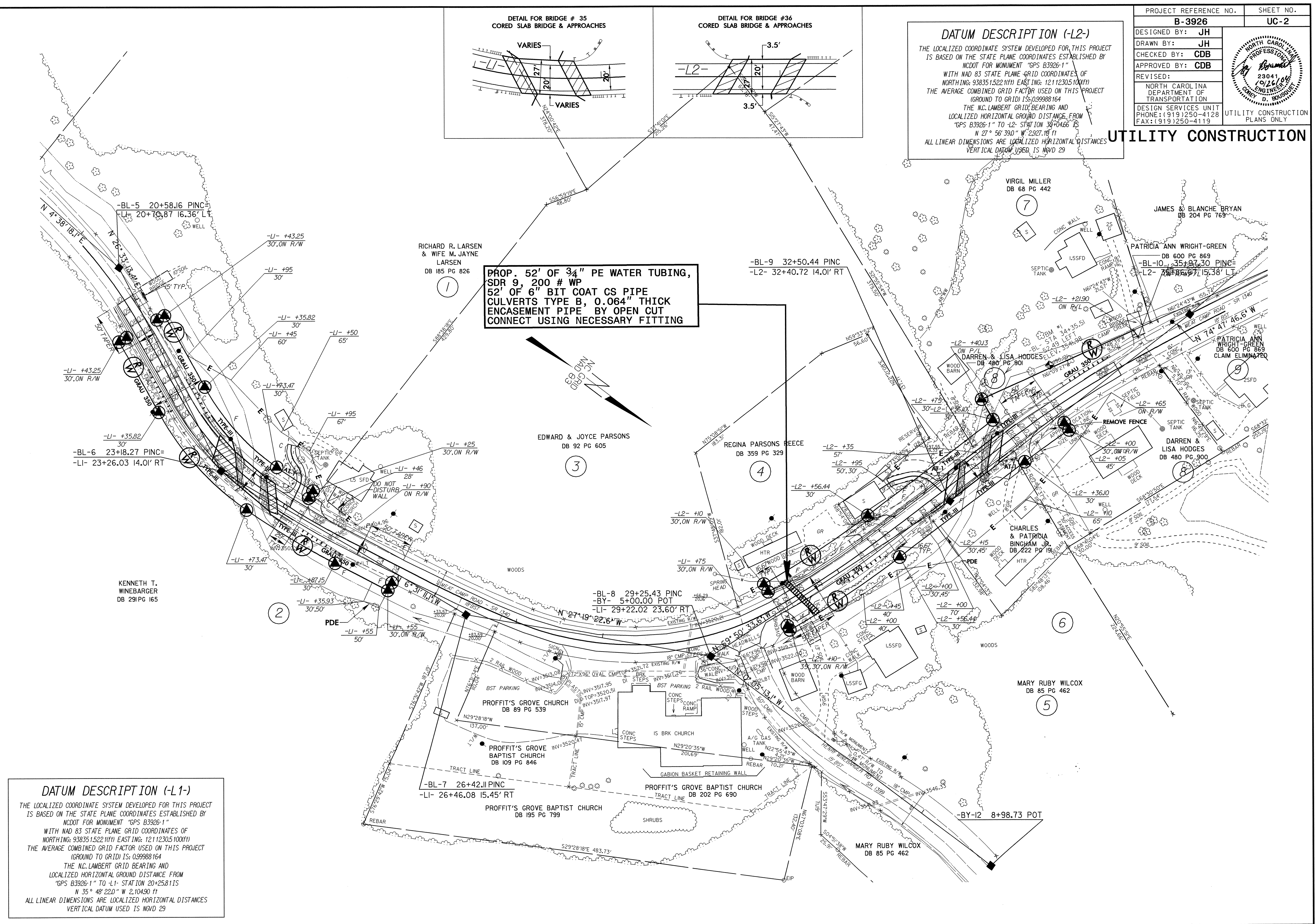
PROJECT REFERENCE NO.	SHEET NO.
B-3926	UC-2
DESIGNED BY: JH	
DRAWN BY: JH	
CHECKED BY: CDB	
APPROVED BY: CDB	
REVISED:	
NORTH CAROLINA DEPARTMENT OF TRANSPORTATION	
DESIGN SERVICES UNIT PHONE: (919) 250-4128 FAX: (919) 250-4119	
UTILITY CONSTRUCTION PLANS ONLY	

DATUM DESCRIPTION (-L2-)
 THE LOCALIZED COORDINATE SYSTEM DEVELOPED FOR THIS PROJECT IS BASED ON THE STATE PLANE COORDINATES ESTABLISHED BY NCDOT FOR MONUMENT "GPS B3926-1" WITH NAD 83 STATE PLANE GRID COORDINATES OF NORTHING: 938351.522(111) EASTING: 12112305.100(11) THE AVERAGE COMBINED GRID FACTOR USED ON THIS PROJECT (GROUND TO GRID) IS: 0.99988164 THE N.C. LAMBERT GRID BEARING AND LOCALIZED HORIZONTAL GROUND DISTANCE FROM "GPS B3926-1" TO L2- STATION 38+04.66 IS N 27° 56' 39.0" W 2,927.18 (1) ALL LINEAR DIMENSIONS ARE LOCALIZED HORIZONTAL DISTANCES VERTICAL DATUM USED IS NGVD 29



**PROP. 52' OF 3/4" PE WATER TUBING,
SDR 9, 200 # WP
52' OF 6" BIT COAT CS PIPE
CULVERTS TYPE B, 0.064" THICK
ENCASEMENT PIPE, BY OPEN CUT
CONNECT USING NECESSARY FITTING**

DATUM DESCRIPTION (-L1-)
 THE LOCALIZED COORDINATE SYSTEM DEVELOPED FOR THIS PROJECT IS BASED ON THE STATE PLANE COORDINATES ESTABLISHED BY NCDOT FOR MONUMENT "GPS B3926-1" WITH NAD 83 STATE PLANE GRID COORDINATES OF NORTHING: 938351.522(111) EASTING: 12112305.100(11) THE AVERAGE COMBINED GRID FACTOR USED ON THIS PROJECT (GROUND TO GRID) IS: 0.99988164 THE N.C. LAMBERT GRID BEARING AND LOCALIZED HORIZONTAL GROUND DISTANCE FROM "GPS B3926-1" TO L1- STATION 20+25.81 IS N 35° 48' 22.0" W 2,104.90 (1) ALL LINEAR DIMENSIONS ARE LOCALIZED HORIZONTAL DISTANCES VERTICAL DATUM USED IS NGVD 29



UTILITY CONSTRUCTION