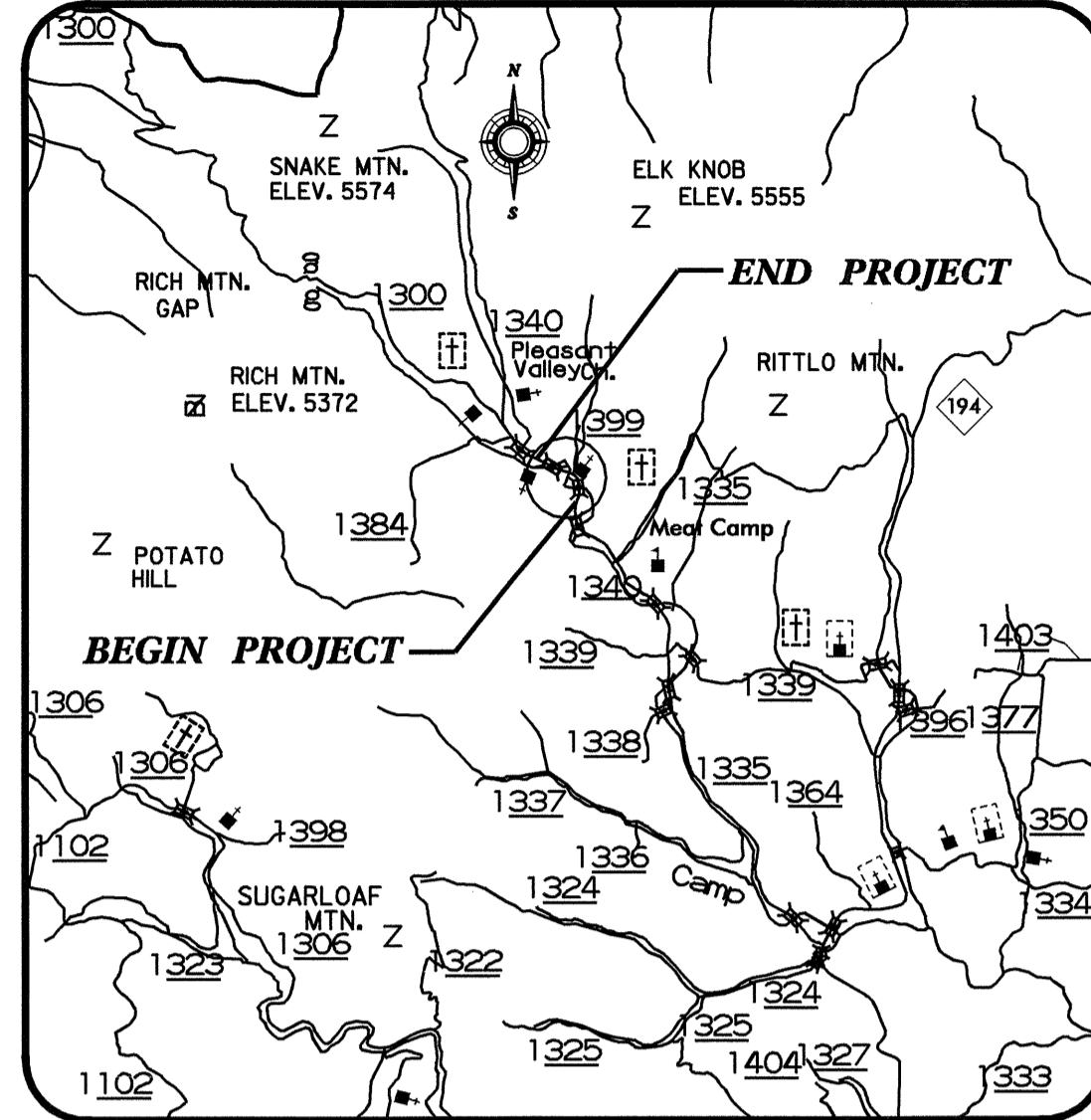


TIP PROJECT: B-3926

CONTRACT: C201168

STRUCTURES



VICINITY MAP

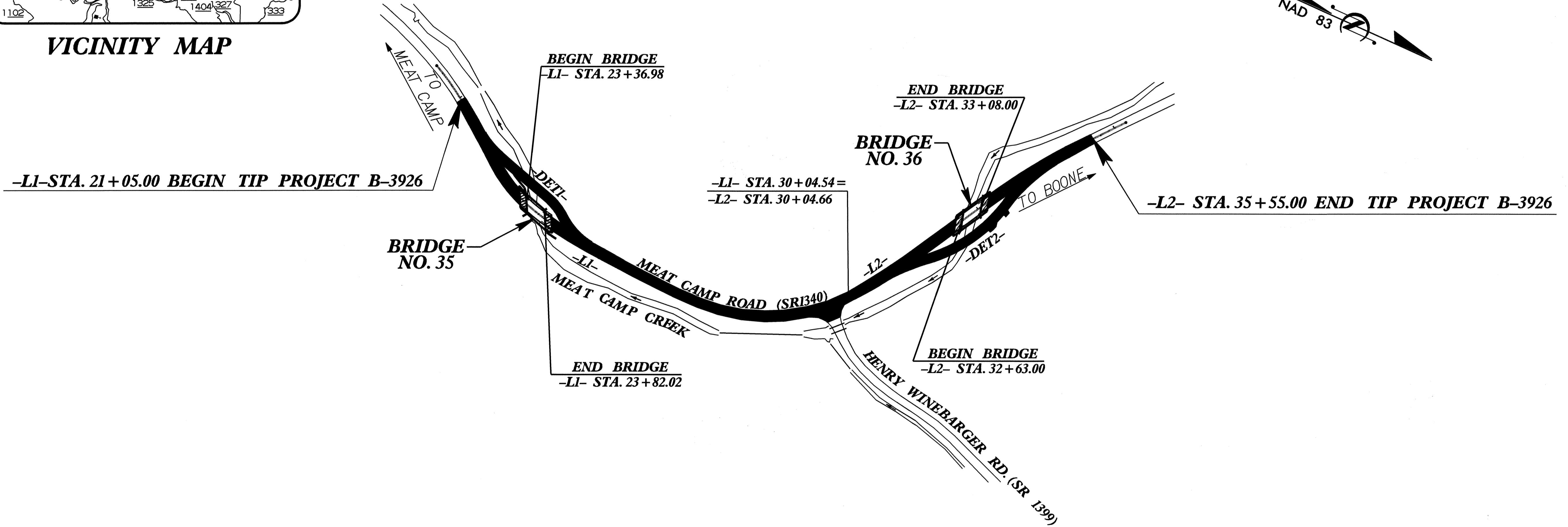
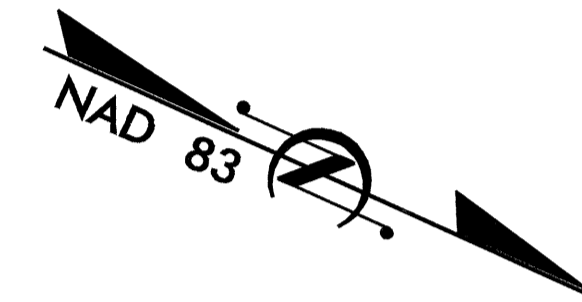
STATE OF NORTH CAROLINA
DIVISION OF HIGHWAYS

WATAUGA COUNTY

LOCATION: REPLACES BRIDGES No. 35 & No. 36 & APPROACHES ON SR 1340, MEAT CAMP ROAD, OVER MEAT CAMP CREEK

TYPE OF WORK: GRADING, DRAINAGE, STRUCTURES & PAVING

STATE	STATE PROJECT REFERENCE NO.	SHEET NO.	TOTAL SHEETS
N.C.	B-3926		
STATE PROJ. NO.	F.A. PROJ. NO.	DESCRIPTION	
33360.1.1	BRZ-1340(4)	PE	
33360.2.1	BRZ-1340(7)	R/W, UTILITIES	
33360.3.1	BRZ-1340(8)	CONSTRUCTION	



DESIGN DATA

ADT 2004 =	960
ADT 2025 =	1,400
DHV =	15 %
D =	60 %
* T =	3 %
** V =	30 MPH

* (1 % TTST & 2% DUAL)
** (DESIGN EXCEPTION REQUIRED)

PROJECT LENGTH

Length Roadway TIP Project B-3926.....	0.258 mi.
Length Structure TIP Project B-3926.....	0.017 mi.
Total Length of TIP Project B-3926	0.275 mi.

Prepared In the Office of:
DEPARTMENT OF TRANSPORTATION
DIVISION OF HIGHWAYS
1000 Birch Ridge Drive, Raleigh, N. C. 27610

2002 STANDARD SPECIFICATIONS

LETTING DATE :
APRIL 19, 2005

B.S. COX, P.E.
PROJECT ENGINEER

D.E. PETREY, P.E.
PROJECT DESIGN ENGINEER

STRUCTURE DESIGN

Gregory R. Perety
1-6-05

DIVISION OF HIGHWAYS
STATE OF NORTH CAROLINA

P.E.
STATE HIGHWAY ENGINEER - DESIGN

DEPARTMENT OF TRANSPORTATION
FEDERAL HIGHWAY ADMINISTRATION

APPROVED FOR _____ DATE _____
DIVISION ADMINISTRATOR