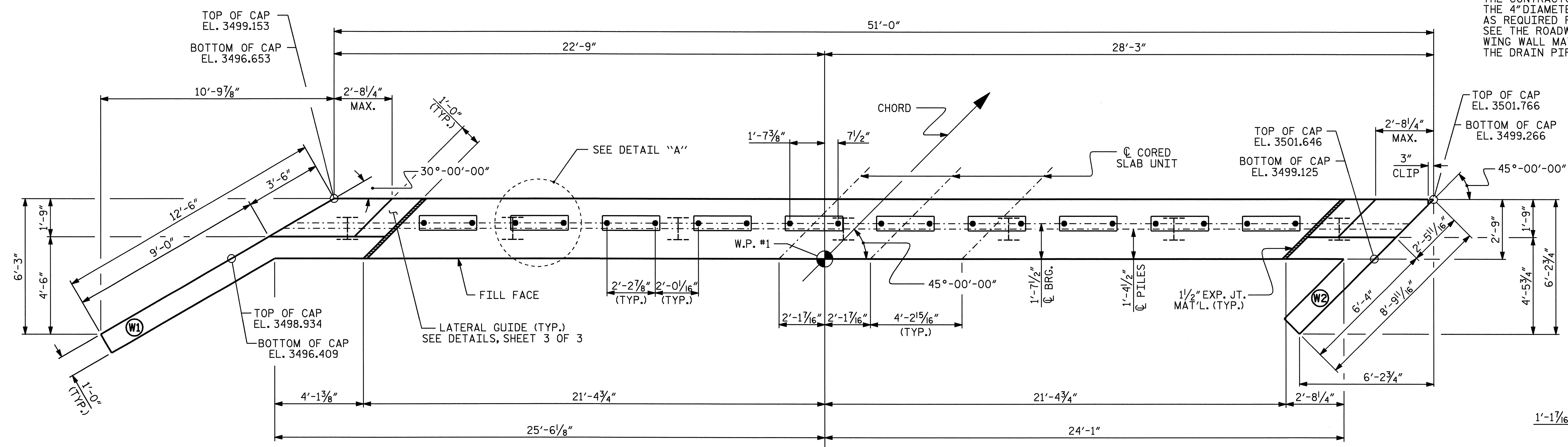


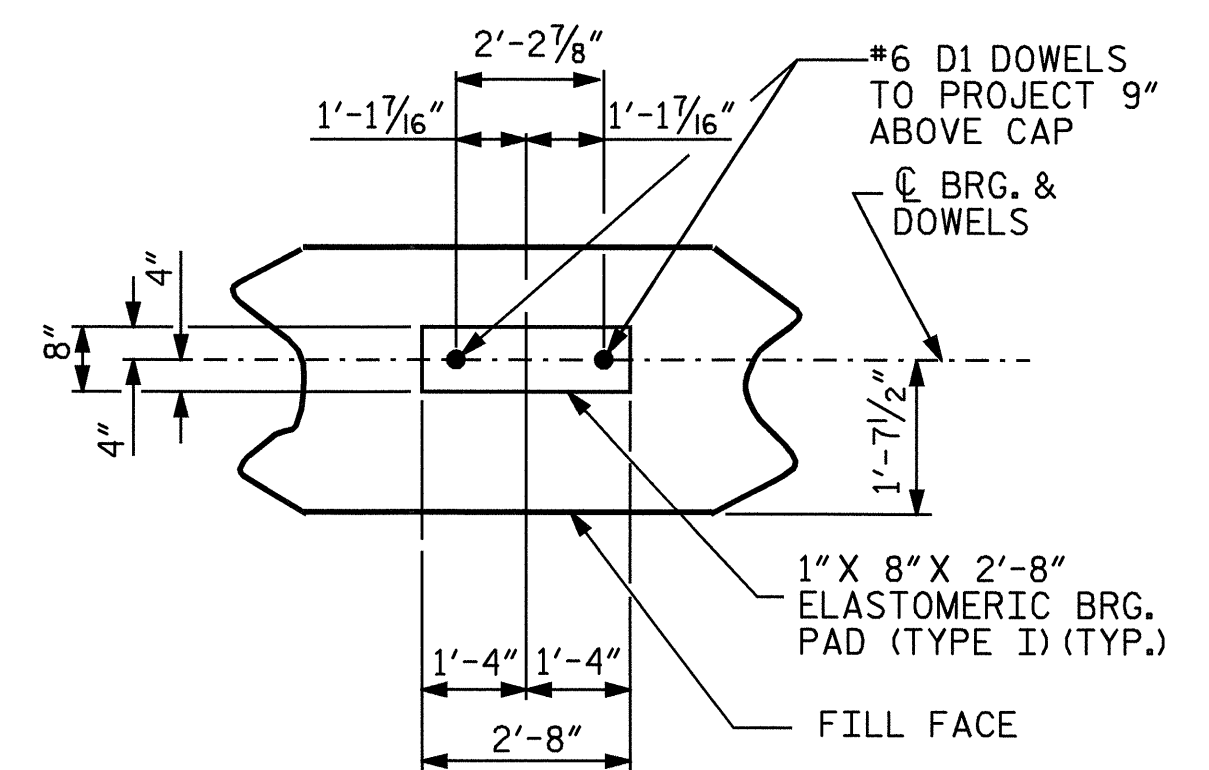
NOTES:
 STIRRUPS IN CAP MAY BE SHIFTED AS NECESSARY TO CLEAR DOWELS.
 THE LATERAL GUIDES ARE NOT TO BE POURED UNTIL AFTER THE CORED SLAB UNITS ARE IN PLACE.
 THE TOP SURFACE OF THE END BENT CAP IS SLOPED LONGITUDINALLY ALONG \bar{C} CORED SLAB UNIT TO MATCH GRADE.
 FOR SECTION A-A, SEE SHEET 3 OF 3.

THE CONTRACTOR SHALL PROVIDE FOR INSTALLATION OF THE 4" DIAMETER DRAIN PIPE THROUGH THE WING WALL AS REQUIRED FOR REINFORCED BRIDGE APPROACH FILLS. SEE THE ROADWAY PLANS. REINFORCING STEEL IN THE WING WALL MAY BE SHIFTED AS NECESSARY TO CLEAR THE DRAIN PIPE.

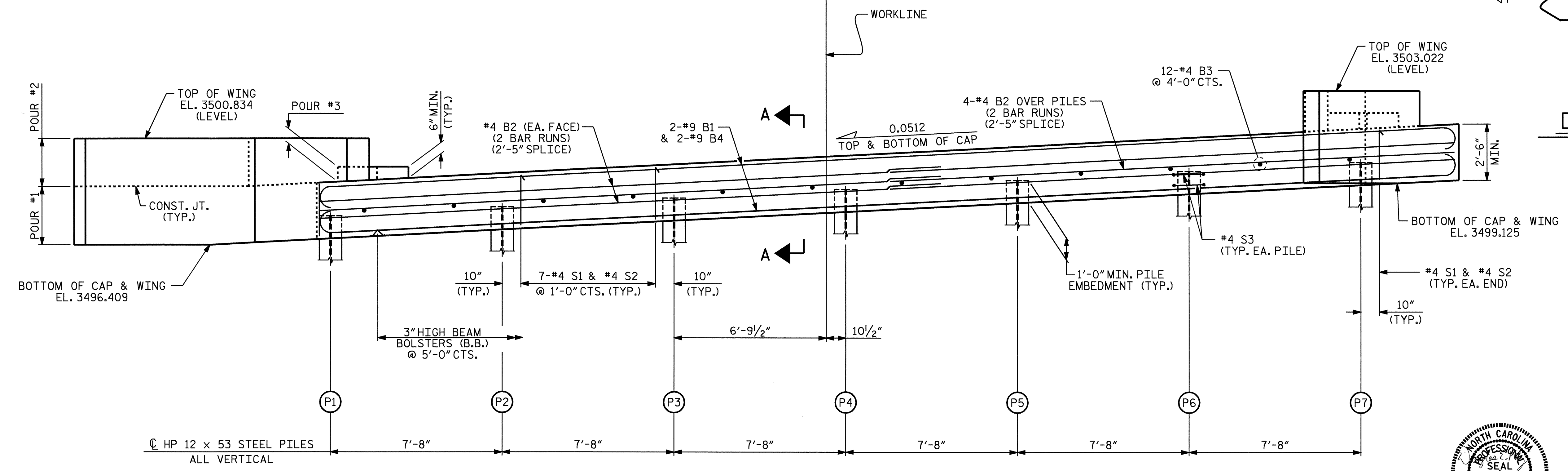
| TOP OF PILE ELEVATION | |
|-----------------------|-----------|
| PILE | ELEVATION |
| P1 | 3497.711 |
| P2 | 3498.104 |
| P3 | 3498.497 |
| P4 | 3498.890 |
| P5 | 3499.283 |
| P6 | 3499.676 |
| P7 | 3500.069 |



PLAN



DETAIL "A"
(TYP. EA. BEARING)



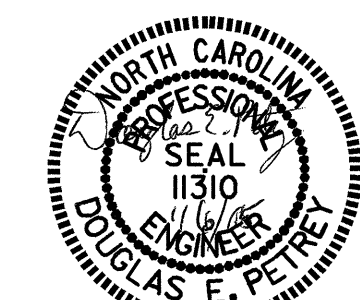
ELEVATION

PROJECT NO. **B-3926**
WATAUGA COUNTY
 STATION: **23+59.50 -L1-**

SHEET 1 OF 3

STATE OF NORTH CAROLINA
 DEPARTMENT OF TRANSPORTATION
 RALEIGH

SUBSTRUCTURE
 END BENT No. 1



| REVISIONS | | | | | | TOTAL SHEETS |
|-----------|-----|-------|-----|-----|-------|--------------|
| NO. | BY: | DATE: | NO. | BY: | DATE: | 36 |
| 1 | | | 3 | | | |
| 2 | | | 4 | | | |

DRAWN BY : **B.N. GRADY** DATE : **11/04**
 CHECKED BY : **P.C. BREWER** DATE : **11/04**

06-JAN-2005 10:41
 W:\sqad\w\3926\bng\grady\Mforstation\3926_sd_eb_01.dgn
 bng\grady