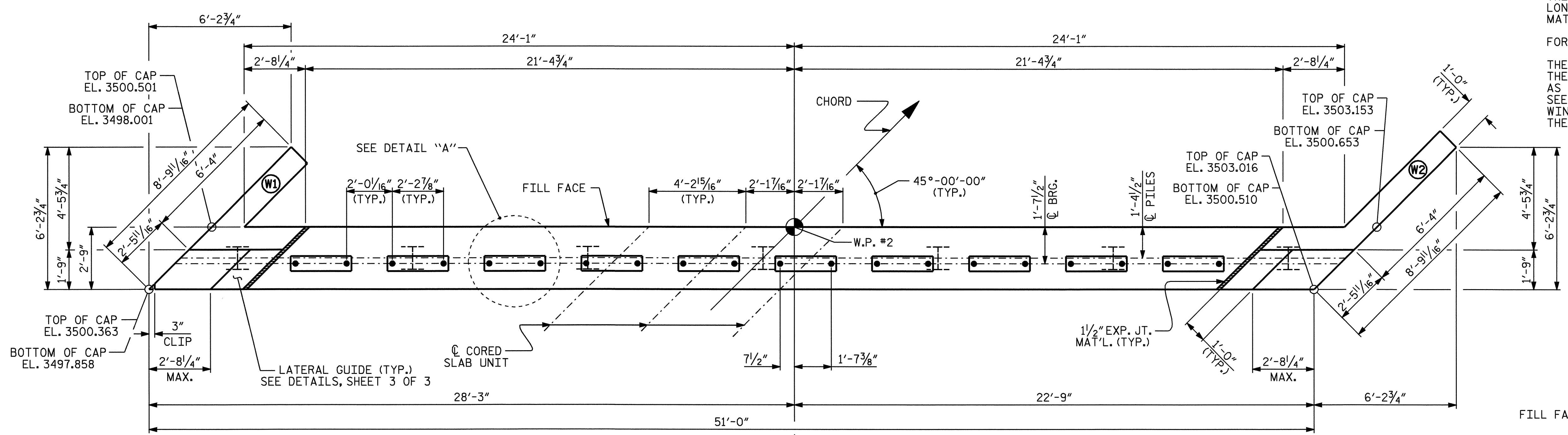
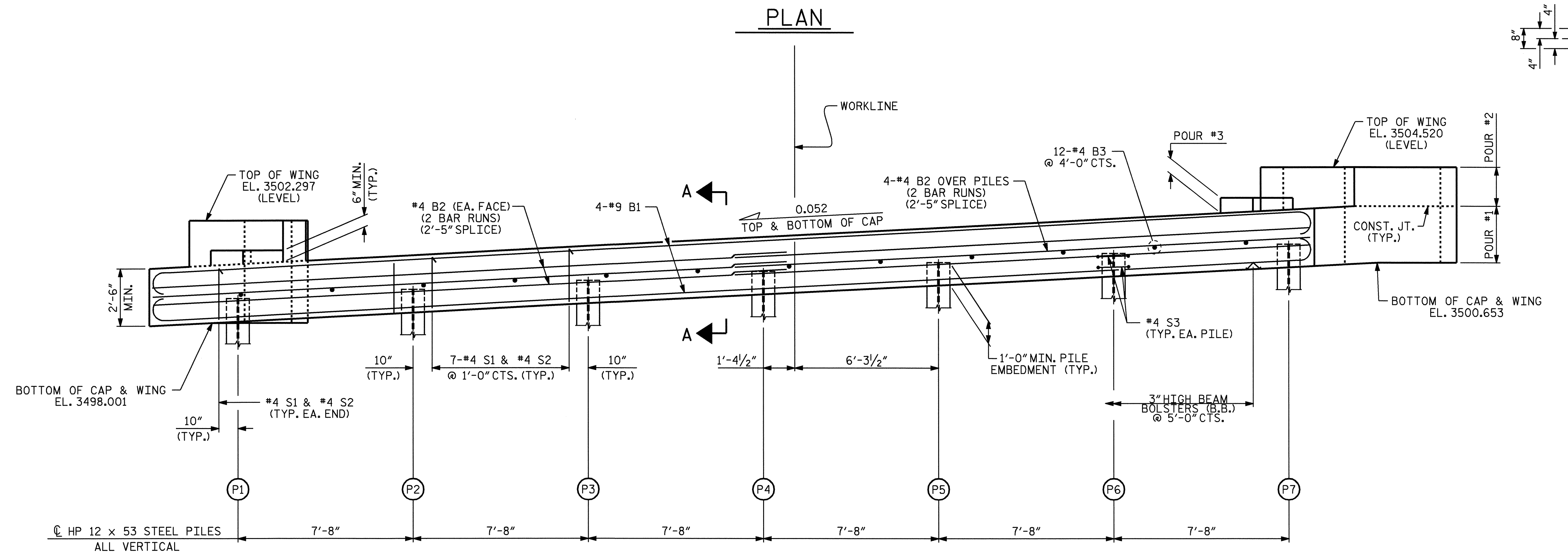
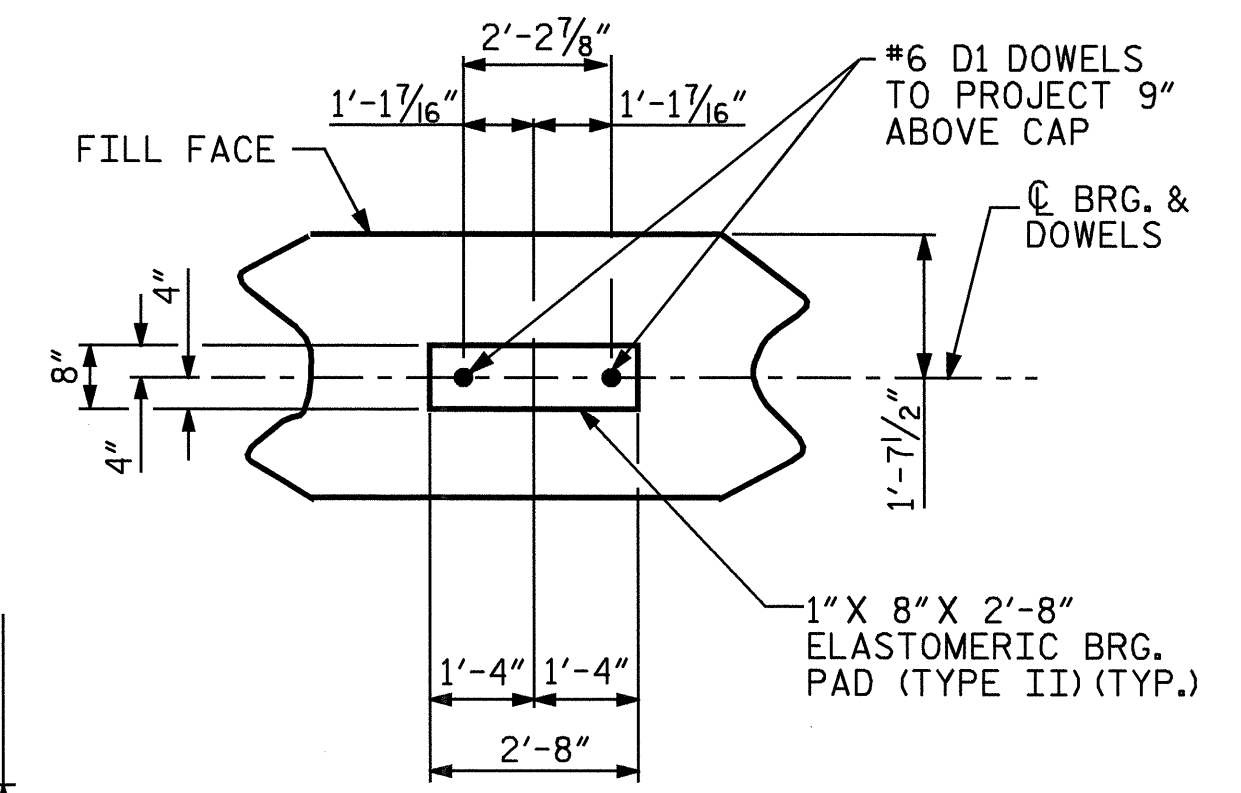


**NOTES:**  
 STIRRUPS IN CAP MAY BE SHIFTED AS NECESSARY TO CLEAR DOWELS.  
 THE LATERAL GUIDES ARE NOT TO BE POURED UNTIL AFTER THE CORED SLAB UNITS ARE IN PLACE.  
 THE TOP SURFACE OF THE END BENT CAP IS SLOPED LONGITUDINALLY ALONG C CORED SLAB UNIT TO MATCH GRADE.  
 FOR SECTION A-A, SEE SHEET 3 OF 3.

THE CONTRACTOR SHALL PROVIDE FOR INSTALLATION OF THE 4" DIAMETER DRAIN PIPE THROUGH THE WING WALL AS REQUIRED FOR REINFORCED BRIDGE APPROACH FILLS, SEE THE ROADWAY PLANS. REINFORCING STEEL IN THE WING WALL MAY BE SHIFTED AS NECESSARY TO CLEAR THE DRAIN PIPE.



TOP OF PILE ELEVATION	
PILE	ELEVATION
P1	3499.085
P2	3499.484
P3	3499.882
P4	3500.281
P5	3500.680
P6	3501.078
P7	3501.477



PROJECT NO. B-3926  
WATAUGA COUNTY  
 STATION: 23+59.50 -L1-

SHEET 1 OF 3

STATE OF NORTH CAROLINA  
 DEPARTMENT OF TRANSPORTATION  
 RALEIGH

SUBSTRUCTURE  
 END BENT No. 2



REVISIONS						SHEET NO.	
NO.	BY:	DATE:	NO.	BY:	DATE:	S-10	
1			3			TOTAL SHEETS 36	
2			4				

DRAWN BY: B.N. GRADY DATE: 11/04  
 CHECKED BY: P.C. BREWER DATE: 11/04

06-JAN-2005 10:42  
 W:\squadw\3926\bngrady\Microstation\b3926.sd\_eb\_01.dgn  
 bngrady