

8/17/99

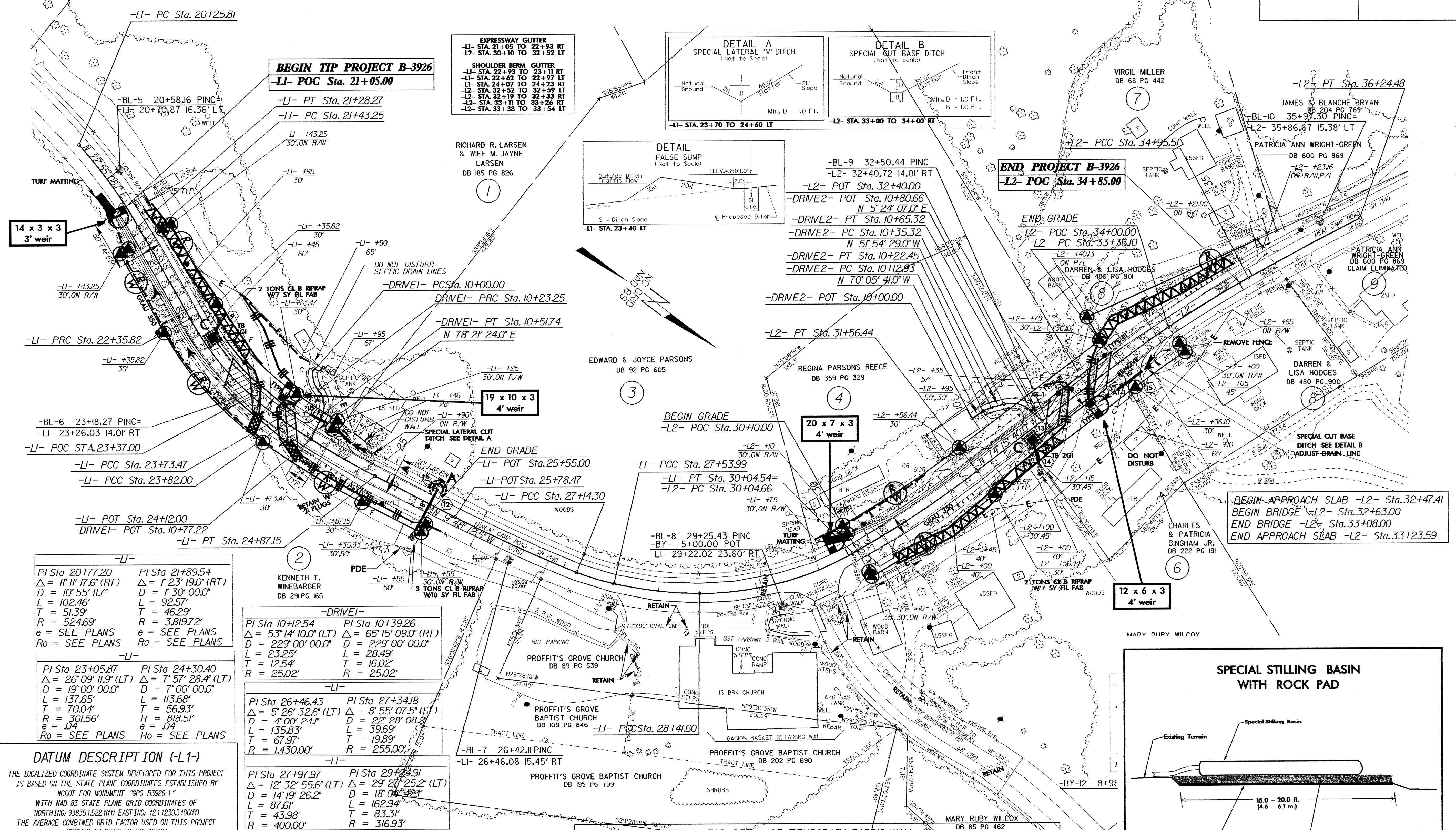
PROJECT REFERENCE NO. B-3926		SHEET NO. EC-6/CONST. 4	
RW SHEET NO.			
ROADWAY DESIGN ENGINEER		HYDRAULICS ENGINEER	

NOTE: INSTALL VEGETATED BERMS (MIN 1 FT HEIGHT) TO ROUTE OFFSITE RUNOFF AROUND EXPOSED PROJECT AREAS. MATT BERMS AS NEEDED TO ESTABLISH VEGETATION.

NOTE: UTILIZE TEMPORARY ROCK SEDIMENT DAM TYPE-B AND/OR SPECIAL STILLING BASIN AS STILLING BASIN WHERE APPLICABLE.

BEGIN APPROACH SLAB -L1- Sta.23+03.97
 BEGIN BRIDGE -L1- Sta.23+36.98
 END BRIDGE -L1- Sta.23+82.02
 END APPROACH SLAB -L1- Sta.23+94.15

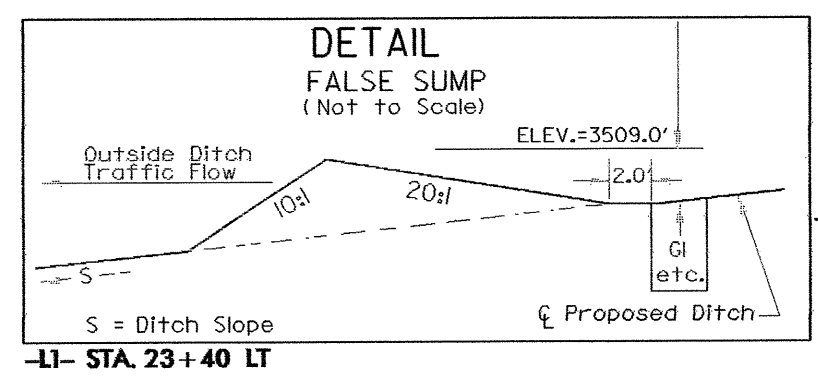
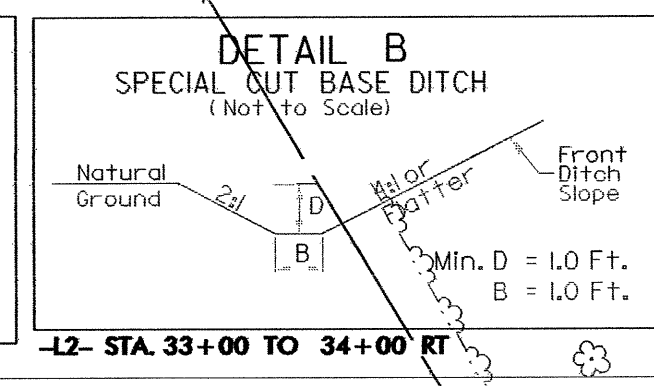
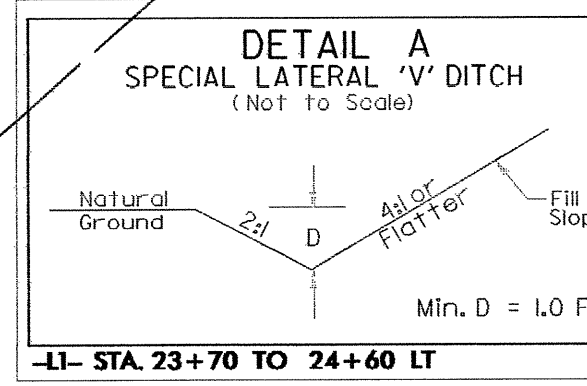
NOT TO SCALE



14 x 3 x 3 3' weir

EXPRESSWAY GUTTER
 -L1- STA. 21+05 TO 22+93 RT
 -L2- STA. 30+10 TO 32+52 LT

SHOULDER BERM GUTTER
 -L1- STA. 22+93 TO 23+11 RT
 -L1- STA. 22+62 TO 22+97 LT
 -L1- STA. 24+07 TO 24+23 RT
 -L2- STA. 32+52 TO 32+59 LT
 -L2- STA. 32+19 TO 32+33 RT
 -L2- STA. 33+11 TO 33+26 RT
 -L2- STA. 33+38 TO 33+54 LT



END PROJECT B-3926
 -L2- POC Sta. 34+85.00

-L1-

PI Sta 20+77.20 Δ = 11' 11" 17.6" (RT) D = 10' 55' 11.7" L = 102.46' T = 51.39' R = 524.69' e = SEE PLANS Ro = SEE PLANS	PI Sta 21+89.54 Δ = 1' 23' 19.0" (RT) D = 1' 30' 00.0" L = 92.57' T = 46.29' R = 3,819.72' e = SEE PLANS Ro = SEE PLANS
---	--

-L1-

PI Sta 23+05.87 Δ = 26' 09' 11.9" (LT) D = 19' 00' 00.0" L = 137.65' T = 70.04' R = 301.56' e = .04 Ro = SEE PLANS	PI Sta 24+30.40 Δ = 7' 57' 28.4" (LT) D = 7' 00' 00.0" L = 113.68' T = 56.93' R = 818.51' e = .04 Ro = SEE PLANS
---	---

DATUM DESCRIPTION (-L1-)

THE LOCALIZED COORDINATE SYSTEM DEVELOPED FOR THIS PROJECT IS BASED ON THE STATE PLANE COORDINATES ESTABLISHED BY NCDOT FOR MONUMENT "GPS B3926-1" WITH NAD 83 STATE PLANE GRID COORDINATES OF NORTHING: 938351522.1111 EASTING: 12112305100111 THE AVERAGE COMBINED GRID FACTOR USED ON THIS PROJECT (GROUND TO GRID) IS: 0.98988164

THE N.C. LAMBERT GRID BEARING AND LOCALIZED HORIZONTAL GROUND DISTANCE FROM "GPS B3926-1" TO -L1- STATION 20+25.8115 IS N 35° 48' 22.0" W 2,104.90 FT

ALL LINEAR DIMENSIONS ARE LOCALIZED HORIZONTAL DISTANCES VERTICAL DATUM USED IS NGVD 29

-DRIVE1-

PI Sta 10+12.54 Δ = 53' 14' 10.0" (LT) D = 229' 00' 00.0" L = 23.25' T = 12.54' R = 25.02'	PI Sta 10+39.26 Δ = 65' 15' 09.0" (RT) D = 229' 00' 00.0" L = 28.49' T = 16.02' R = 25.02'
---	---

-L1-

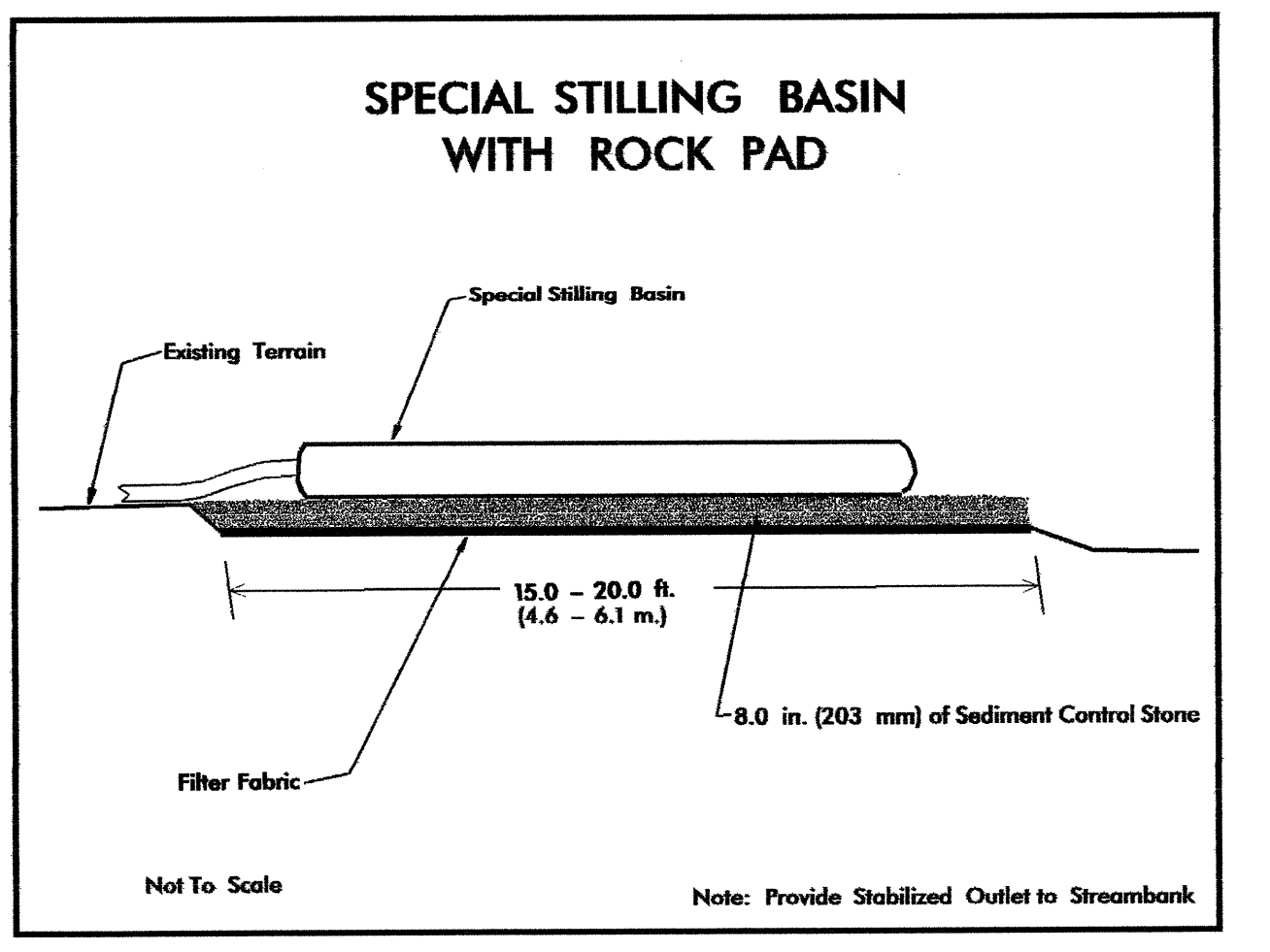
PI Sta 26+46.43 Δ = 5' 26' 32.6" (LT) D = 4' 00' 24.1" L = 135.83' T = 67.97' R = 1,430.00'	PI Sta 27+34.18 Δ = 8' 55' 07.5" (LT) D = 22' 28' 08.2" L = 39.69' T = 19.89' R = 255.00'
--	--

-L1-

PI Sta 27+97.97 Δ = 12' 32' 55.6" (LT) D = 14' 19' 26.2" L = 87.61' T = 43.98' R = 400.00'	PI Sta 29+24.91 Δ = 29' 21' 25.2" (LT) D = 18' 04' 42.3" L = 162.94' T = 83.31' R = 316.93'
---	--

NOTE: SEE SHEET 2 FOR DETAIL OF TEMPORARY FABRIC WALL SEE SHEET 5 FOR -L1- & -L2- PROFILES SEE SHEET 6 FOR -DRIVE1- & -DRIVE2- PROFILES.

NOTE: 2.5in OVERLAY FROM -L1- STA.25+55.00 TO -L1- STA. 30+04.54, -L2- STA.30+04.66 TO -L2- STA.30+10.00, AND -L2- STA.34+00.00 TO -L2- STA.34+85.00 ALL DRIVEWAY RADII ARE 5' UNLESS OTHERWISE SPECIFIED



09-DEC-2004 09:24 dr:\REL\p\bridge\B-3926\Roadway\Pro_b3926.rdw..._b3926-1.dwg