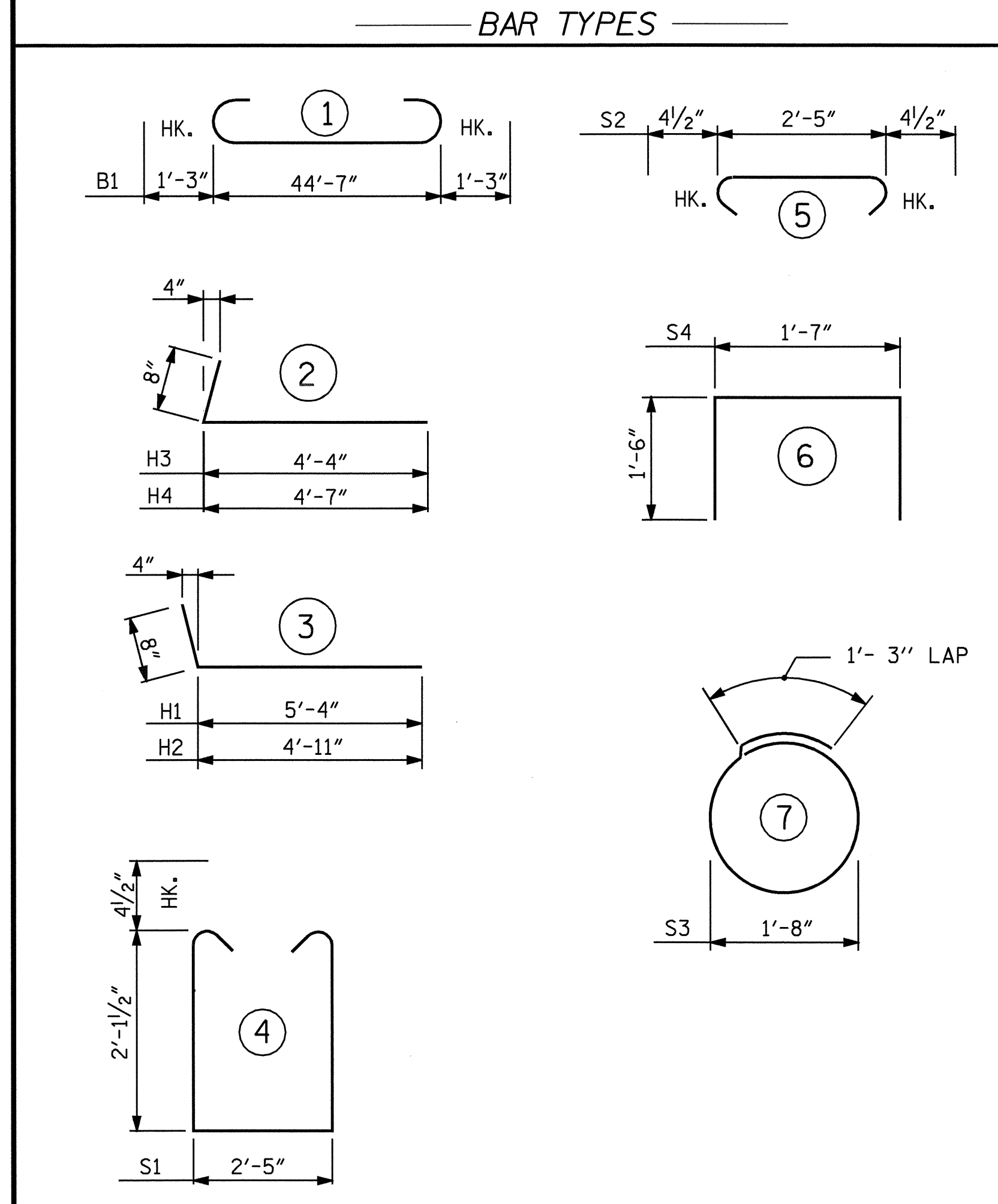


SECTION A-A



ALL BAR DIMENSIONS ARE OUT TO OUT.

BILL OF MATERIAL

END BENT NO. 2

BAR	NO.	SIZE	TYPE	LENGTH	WEIGHT
B1	8	#9	1	47'-1"	1281
B2	12	#4	STR	23'-7"	189
B3	11	#4	STR	2'-5"	18
D1	22	#6	STR	1'-6"	50
H1	5	#4	3	6'-0"	20
H2	5	#4	3	5'-7"	19
H3	5	#4	2	5'-0"	17
H4	5	#4	2	5'-3"	18
S1	42	#4	4	7'-5"	208
S2	42	#4	5	3'-2"	89
S3	12	#4	7	6'-6"	52
S4	4	#4	6	4'-7"	12
K1	8	#4	STR	2'-11"	16
V1	20	#4	STR	3'-11"	52
V2	20	#4	STR	4'-1"	55

REINFORCING STEEL = 2096 LB.
 CLASS A CONCRETE

POUR #1
 CAP AND LOWER PART OF WINGS CU. YDS. 12.5

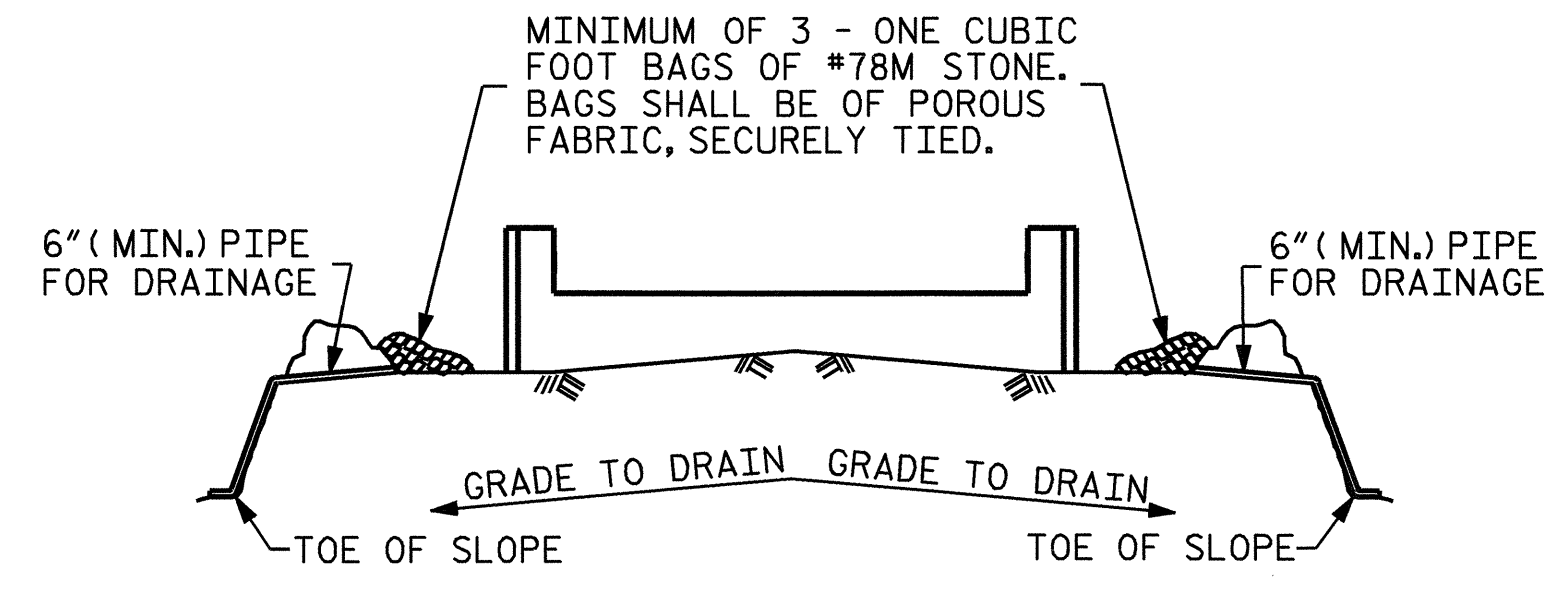
POUR #2
 UPPER PART OF WINGS CU. YDS. 1.0

POUR #3
 LATERAL GUIDES CU. YDS. 0.1

TOTAL CU. YDS. 13.5

HP 12x53 STEEL PILES

NO.	6	LIN. FT.	150
-----	---	----------	-----



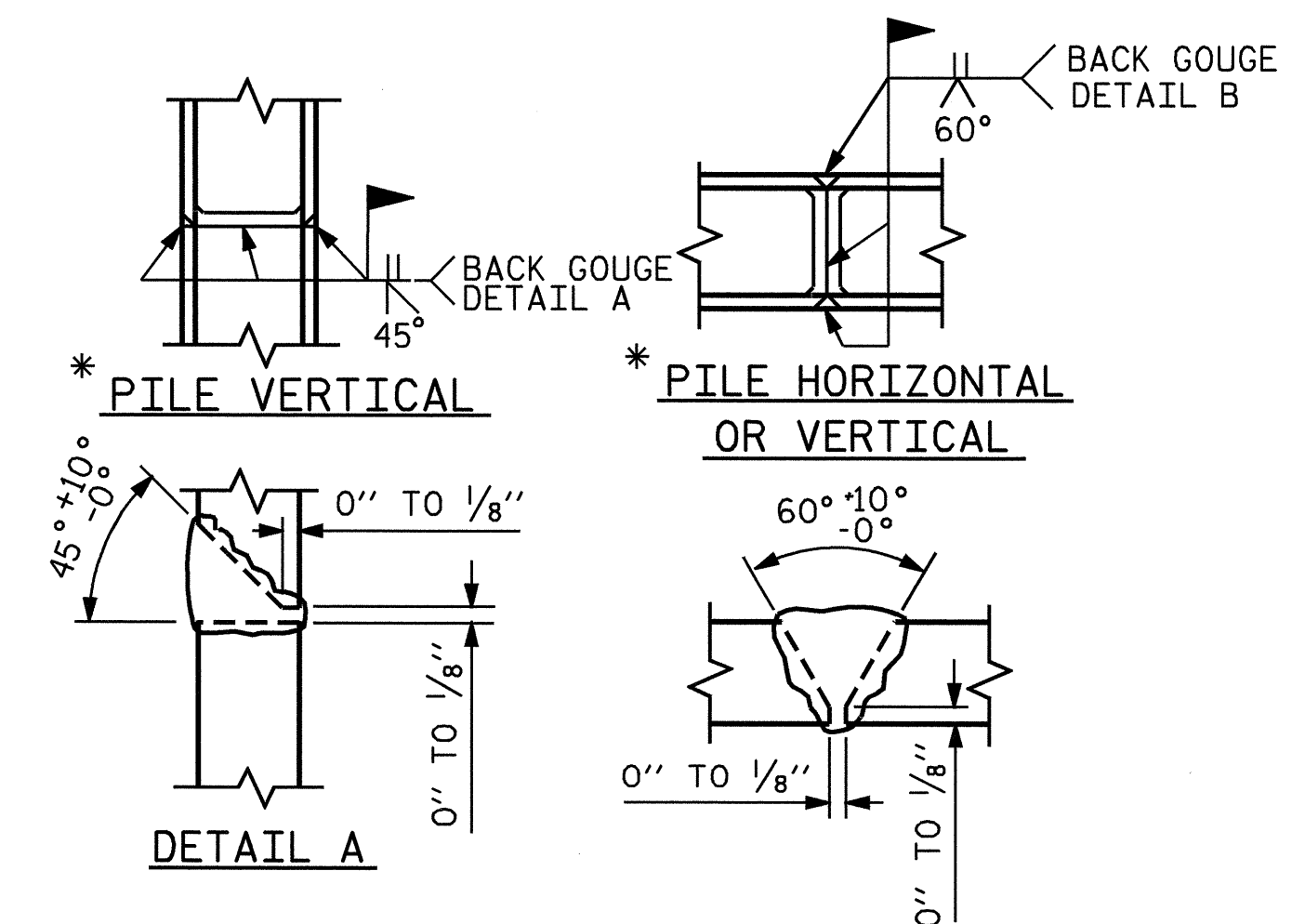
MINIMUM OF 3 - ONE CUBIC FOOT BAGS OF #78M STONE. BAGS SHALL BE OF POROUS FABRIC, SECURELY TIED.

BAGGED STONE AND PIPE SHALL BE PLACED IMMEDIATELY AFTER COMPLETION OF END BENT EXCAVATION. PIPE MAY BE EITHER CONCRETE, CORRUGATED STEEL, CORRUGATED ALUMINUM ALLOY, OR CORRUGATED PLASTIC. PERFORATED PIPE WILL NOT BE ALLOWED.

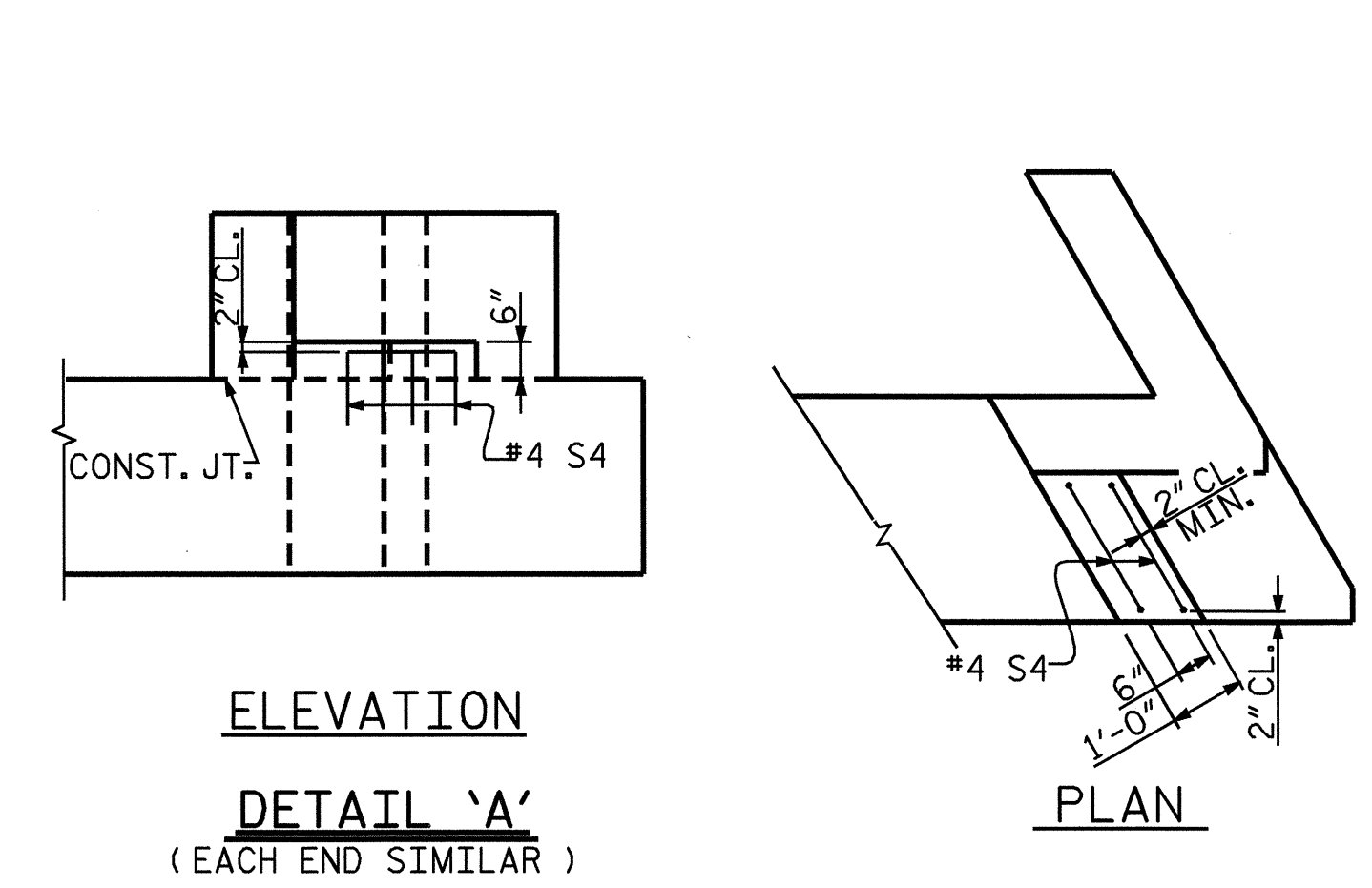
BAGGED STONE SHALL REMAIN IN PLACE UNTIL THE ENGINEER DIRECTS THAT IT BE REMOVED. THE CONTRACTOR SHALL REMOVE AND DISPOSE OF SILT ACCUMULATIONS AT BAGGED STONE WHEN SO DIRECTED BY THE ENGINEER. BAGS SHALL BE REMOVED AND REPLACED WHENEVER THE ENGINEER DETERMINES THAT THEY HAVE DETERIORATED AND LOST THEIR EFFECTIVENESS.

NO SEPARATE PAYMENT WILL BE MADE FOR THIS WORK AND THE ENTIRE COST OF THIS WORK SHALL BE INCLUDED IN THE UNIT CONTRACT PRICE BID FOR THE SEVERAL PAY ITEMS.

TEMPORARY DRAINAGE AT END BENT



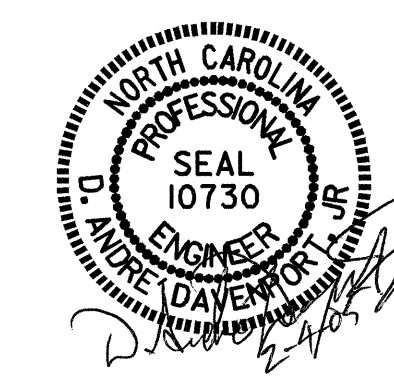
PILE SPLICE DETAILS



PROJECT NO. B-4260
 RUTHERFORD COUNTY
 STATION: 16+23.47 -L-
 SHEET 3 OF 3

STATE OF NORTH CAROLINA
 DEPARTMENT OF TRANSPORTATION
 RALEIGH

**SUBSTRUCTURE
 END BENT 2**



REVISIONS				SHEET NO.	
NO.	BY:	DATE:	NO.	BY:	DATE:
1			3		
2			4		

TOTAL SHEETS: 22