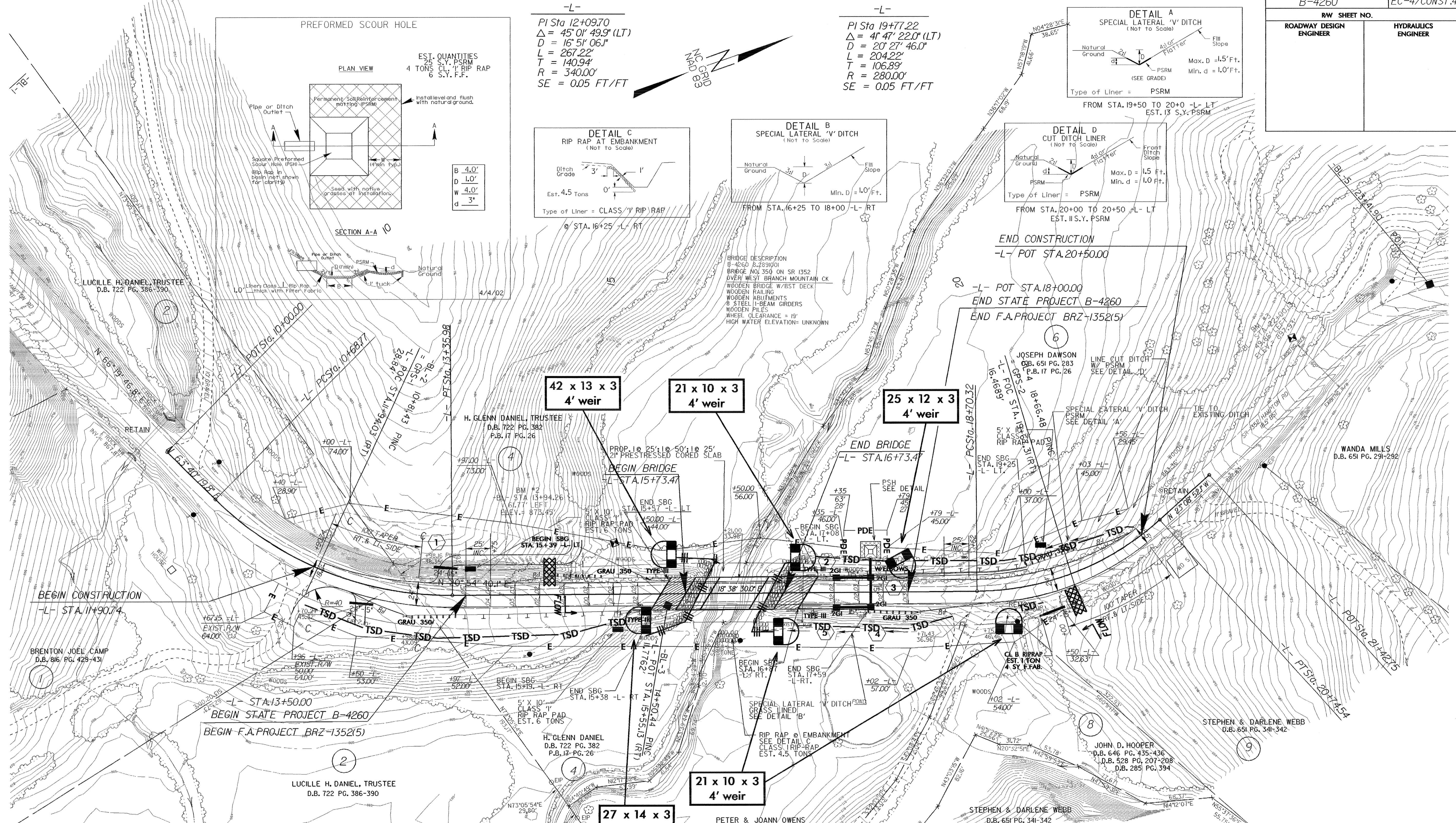
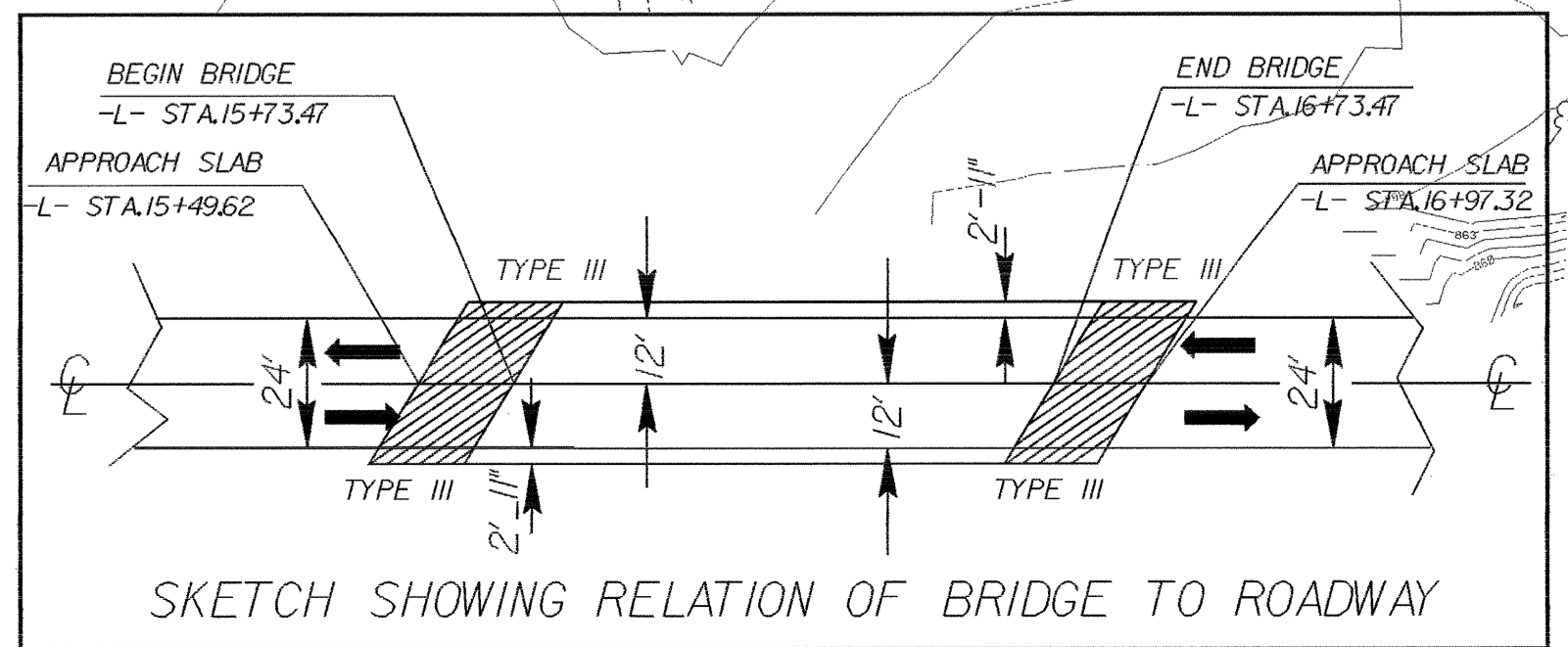
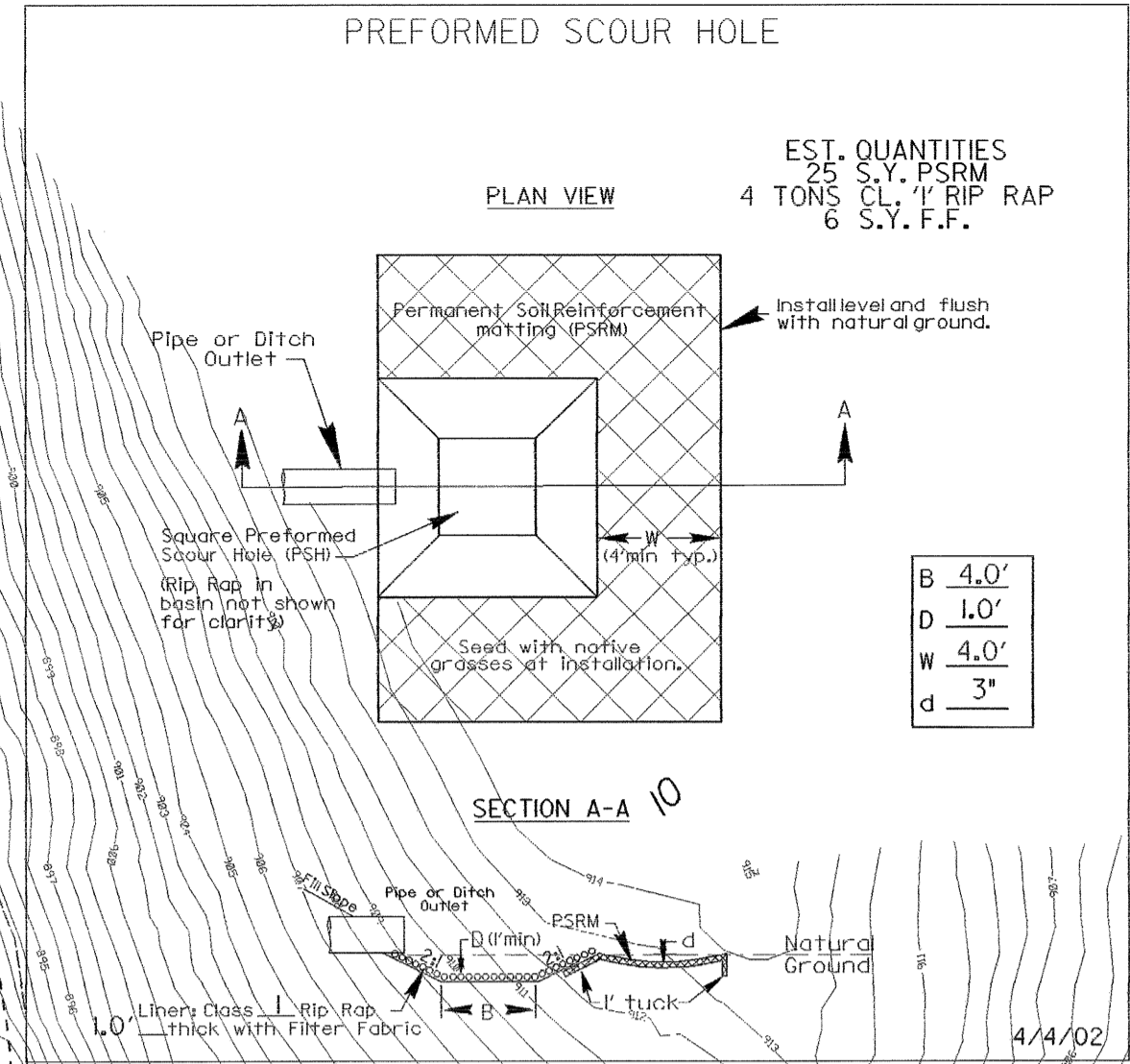
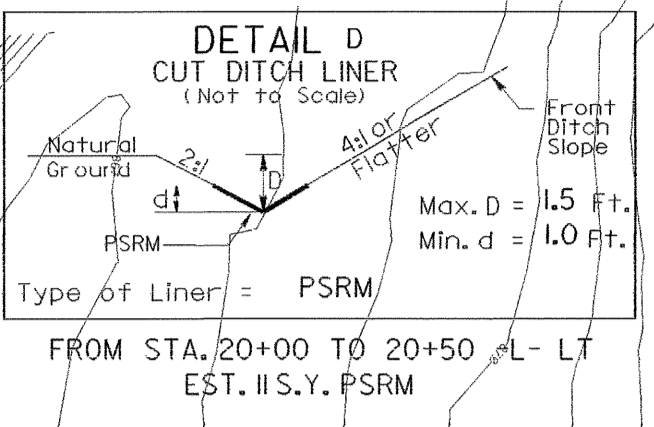
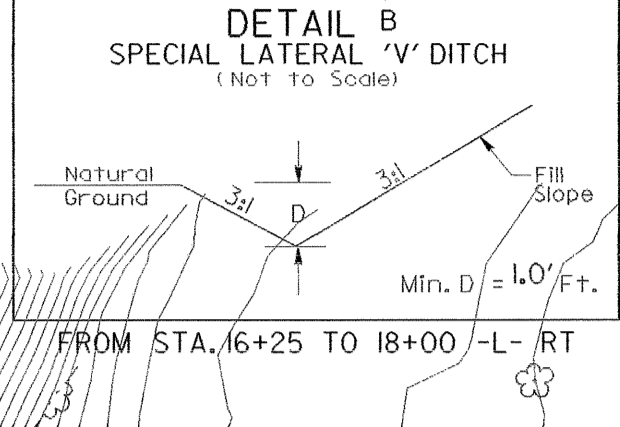
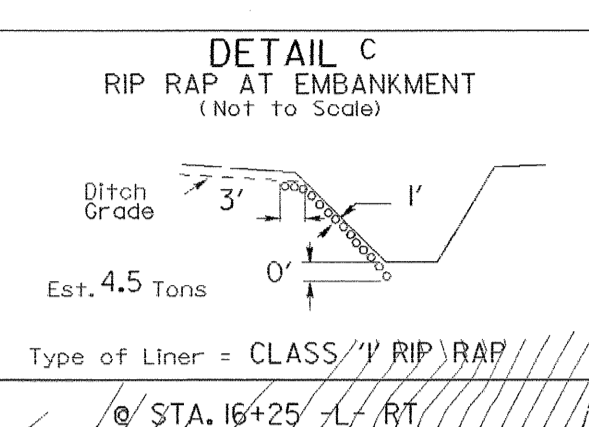
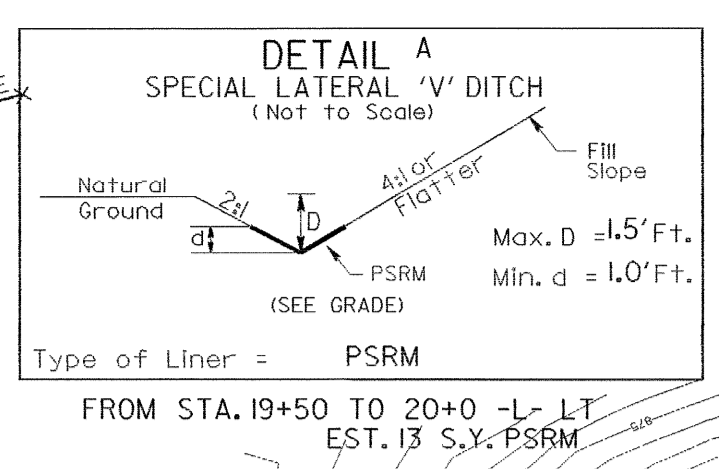


PROJECT REFERENCE NO. B-4260		SHEET NO. EC-4/CONST.4	
RW SHEET NO.			
ROADWAY DESIGN ENGINEER		HYDRAULICS ENGINEER	



-L-  
 PI Sta 12+09.70  
 $\Delta = 45' 01'' 49.9''$  (LT)  
 $D = 16' 51'' 06.1''$   
 $L = 267.22'$   
 $T = 140.94'$   
 $R = 340.00'$   
 $SE = 0.05$  FT/FT

-L-  
 PI Sta 19+77.22  
 $\Delta = 41' 47'' 22.0''$  (LT)  
 $D = 20' 27'' 46.0''$   
 $L = 204.22'$   
 $T = 106.89'$   
 $R = 280.00'$   
 $SE = 0.05$  FT/FT

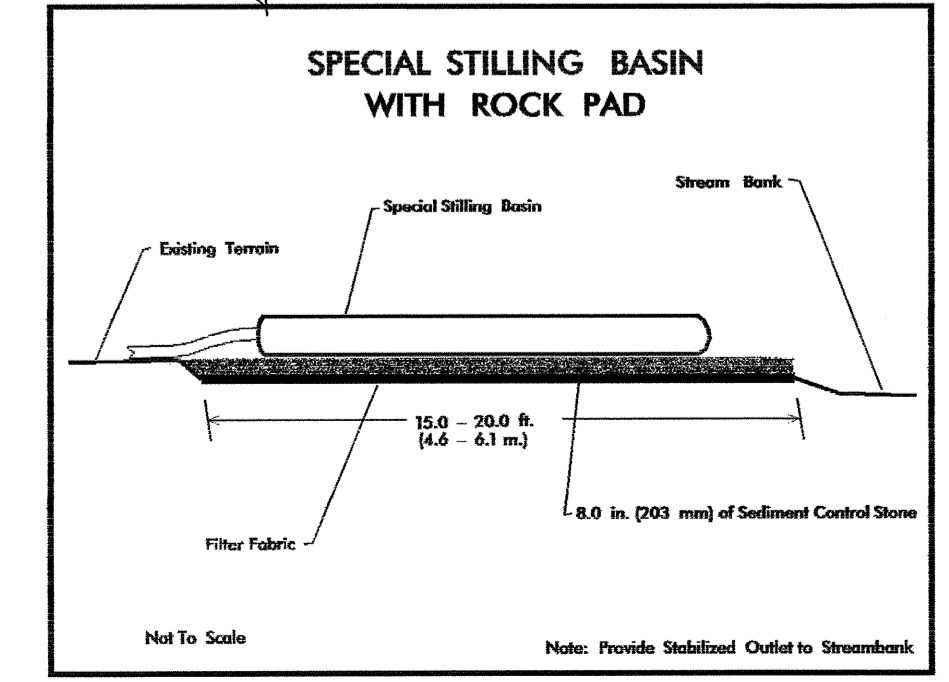


NOTE:  
 PLACE TEMPORARY ROCK SEDIMENT DAMS TYPE - B AND TEMPORARY ROCK SILT CHECKS TYPE - A AT DRAINAGE OUTLETS.

CLEARING AND GRUBBING EROSION CONTROL FOR CONSTRUCTION SHEET 4

NOTE: UTILIZE SPECIAL STILLING BASIN OR TEMPORARY ROCK SEDIMENT DAM TYPE - B AS STILLING BASIN WHERE APPLICABLE.

**DATUM DESCRIPTION**  
 THE LOCALIZED COORDINATE SYSTEM DEVELOPED FOR THIS PROJECT IS BASED ON THE STATE PLANE COORDINATES ESTABLISHED BY NCDOT FOR MONUMENT "B-4260-1" WITH NAD 83 STATE PLANE GRID COORDINATES OF NORTHING: 624913452(11) EASTING: 1066112356(11) THE AVERAGE COMBINED GRID FACTOR USED ON THIS PROJECT (GROUND TO GRID) IS: 0.999835577 THE N.C. LAMBERT GRID BEARING AND LOCALIZED HORIZONTAL GROUND DISTANCE FROM "B-4260-1" TO -L- STATION (10+00) IS N 89°59'57.93" DIST: 386468.5770 ALL LINEAR DIMENSIONS ARE LOCALIZED HORIZONTAL DISTANCES VERTICAL DATUM USED IS: NAVD 88



\*\*NOTE: DESIGN REQUESTED FOR DESIGN SPEED (30 MPH)

\*\*NOTE: SEE SHEET 5 FOR -L- PROFILE