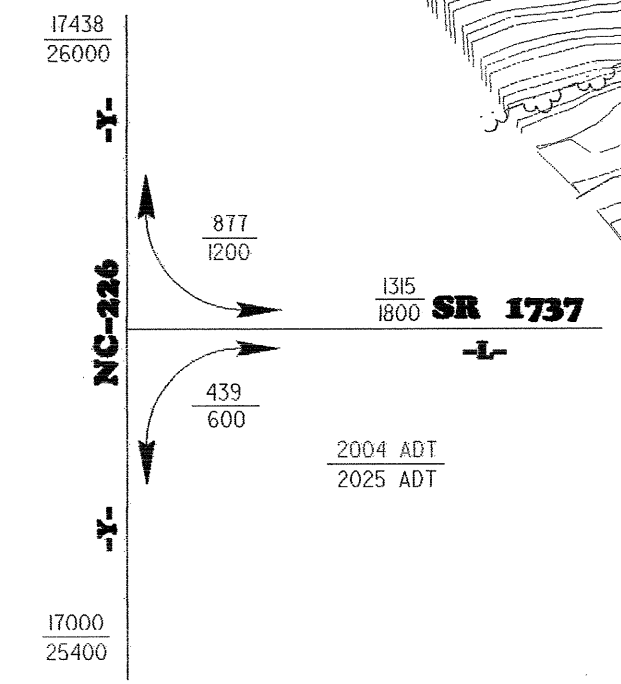
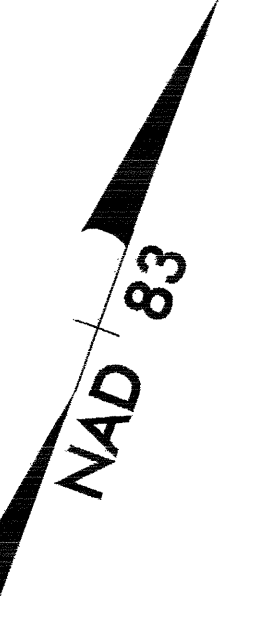
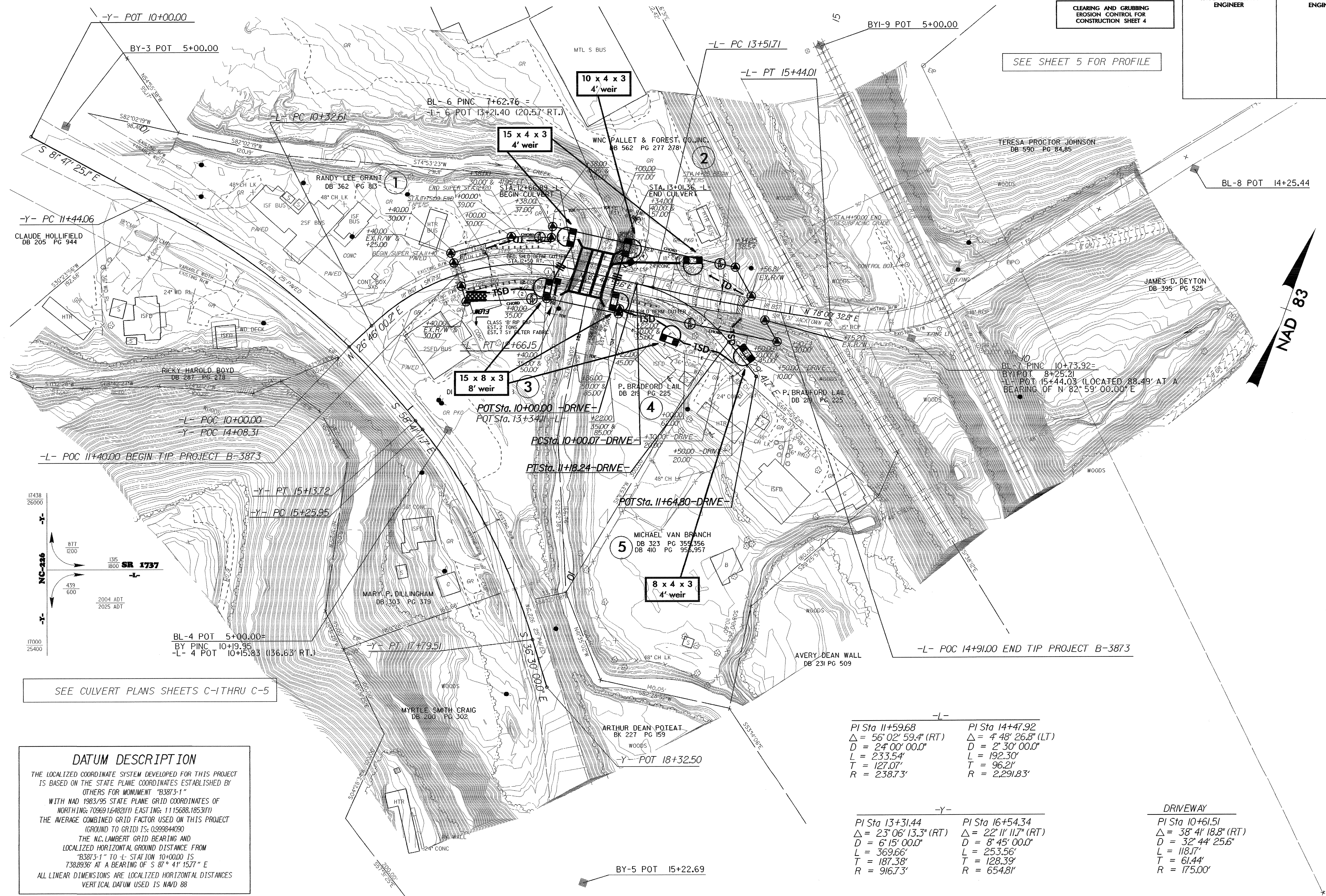


PROJECT REFERENCE NO.	SHEET NO.
B-3873	EC-3/CONST.4
RW SHEET NO.	HYDRAULICS ENGINEER
ROADWAY DESIGN ENGINEER	

NOTE: PLACE TEMPORARY ROCK SEDIMENT DAMS TYPE-B AND TEMPORARY ROCK SILT CHECKS TYPE-A AT DRAINAGE OUTLETS.

CLEARING AND GRUBBING EROSION CONTROL FOR CONSTRUCTION SHEET 4

SEE SHEET 5 FOR PROFILE



SEE CULVERT PLANS SHEETS C-1 THRU C-5

DATUM DESCRIPTION
 THE LOCALIZED COORDINATE SYSTEM DEVELOPED FOR THIS PROJECT IS BASED ON THE STATE PLANE COORDINATES ESTABLISHED BY OTHERS FOR MONUMENT "B3873-1" WITH NAD 1983/95 STATE PLANE GRID COORDINATES OF NORTHING: 70969.16482(11) EASTING: 1115688.1853(11) THE AVERAGE COMBINED GRID FACTOR USED ON THIS PROJECT (GROUND TO GRID) IS: 0.999844090 THE N.C. LAMBERT GRID BEARING AND LOCALIZED HORIZONTAL GROUND DISTANCE FROM "B3873-1" TO -L- STATION 10+00.00 IS 738.8936' AT A BEARING OF S 87° 41' 15.77" E ALL LINEAR DIMENSIONS ARE LOCALIZED HORIZONTAL DISTANCES VERTICAL DATUM USED IS NAVD 88

-L-
 PI Sta 11+59.68 Δ = 56° 02' 59.4" (RT) D = 24' 00" 00.0" L = 233.54' T = 127.07' R = 238.73'
 PI Sta 14+47.92 Δ = 4° 48' 26.8" (LT) D = 2' 30" 00.0" L = 192.30' T = 96.21' R = 2,291.83'

-Y-
 PI Sta 13+31.44 Δ = 23° 06' 13.3" (RT) D = 6' 15" 00.0" L = 369.66' T = 187.38' R = 916.73'
 PI Sta 16+54.34 Δ = 22° 11' 11.7" (RT) D = 8' 45" 00.0" L = 253.56' T = 128.39' R = 654.81'

DRIVEWAY
 PI Sta 10+61.51 Δ = 38° 41' 18.8" (RT) D = 32' 44" 25.6" L = 118.17' T = 61.44' R = 175.00'