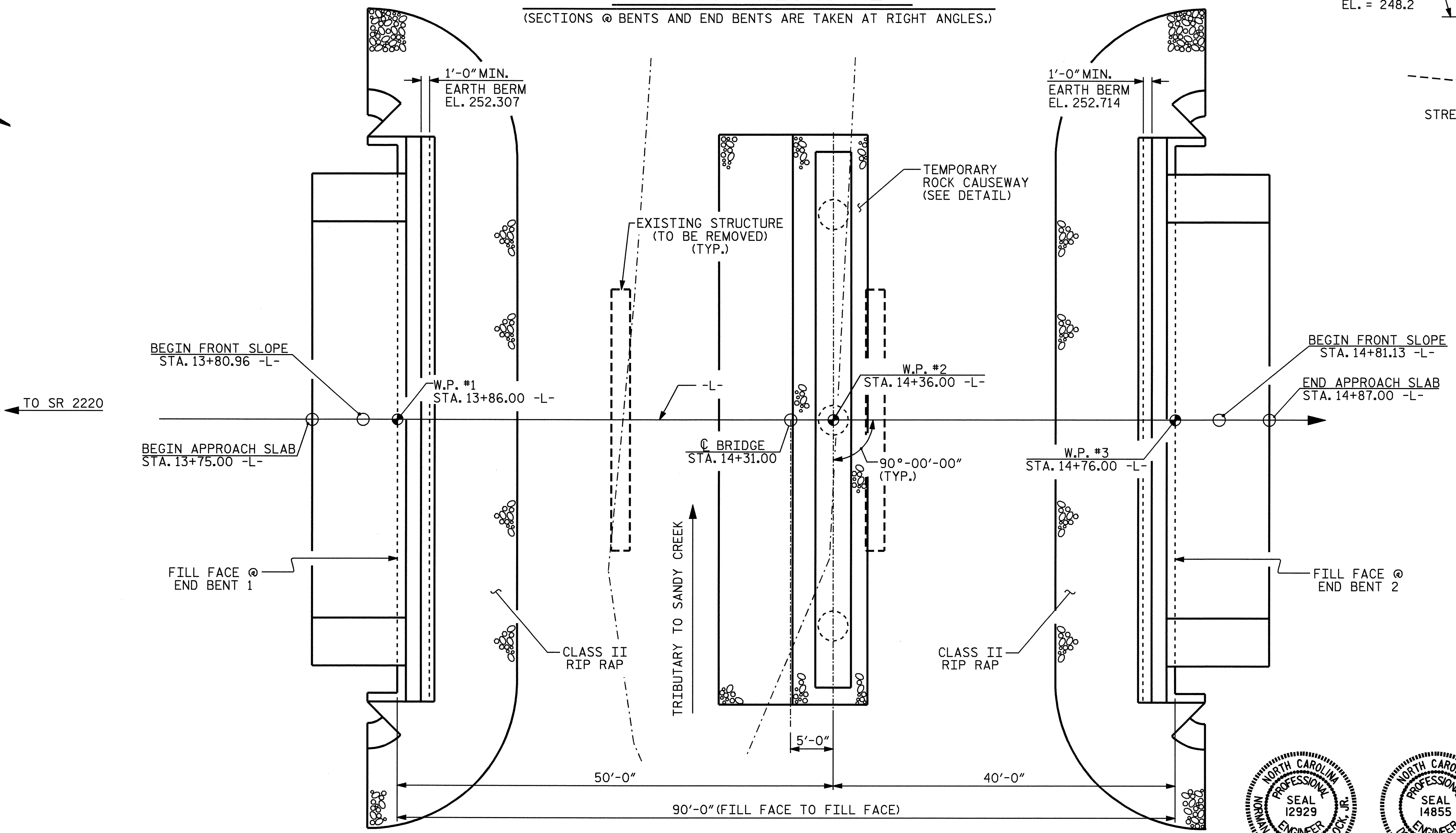
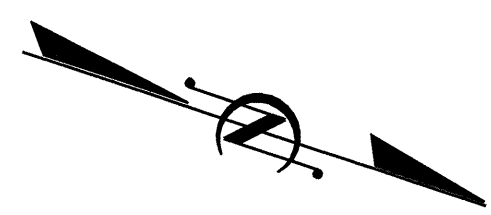
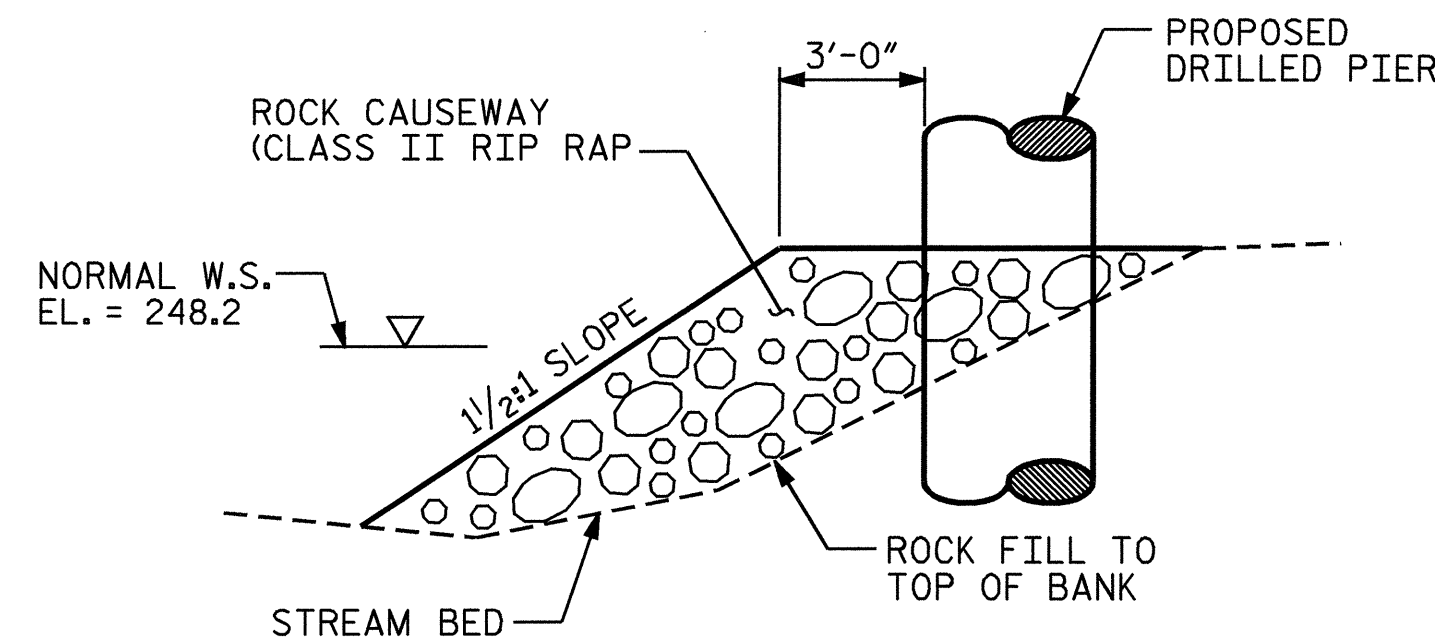
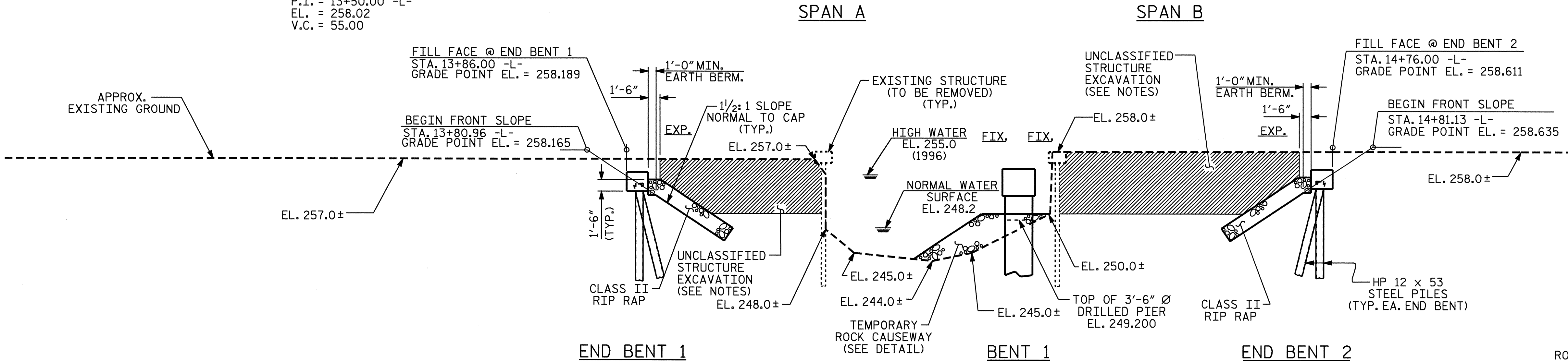


260
250
240
230



PROJECT NO. B-3450
DURHAM COUNTY
STATION: 14+31.00 -L-

SHEET 1 OF 3 REPLACES BRIDGE #217

STATE OF NORTH CAROLINA
DEPARTMENT OF TRANSPORTATION
RALEIGH

GENERAL DRAWING
BRIDGE OVER TRIBUTARY
TO SANDY CREEK ON SR 1116
BETWEEN SR 2220
AND US 15/501

PROFESSIONAL ENGINEER
SEAL 12929
NORBERT J. BUCKLEY JR.
3/1/05

PROFESSIONAL ENGINEER
SEAL 14855
NORTH CAROLINA
DANIEL R. CALDWELL
3-1-05

REVISIONS						SHEET NO.
NO.	BY:	DATE:	NO.	BY:	DATE:	S-1
1			3			TOTAL SHEETS
2			4			53

DRAWN BY: A. MEADOWS DATE: 6/28/02
CHECKED BY: K. MCCAULEY DATE: 8/06/02