

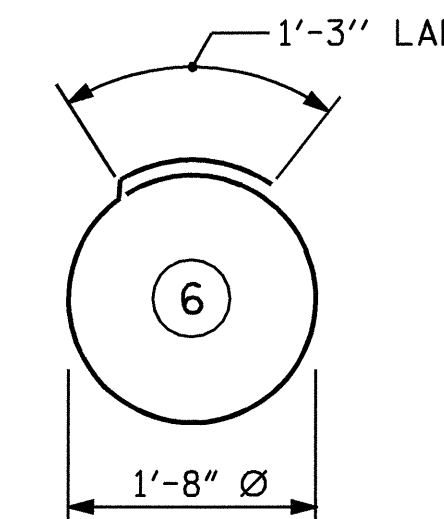
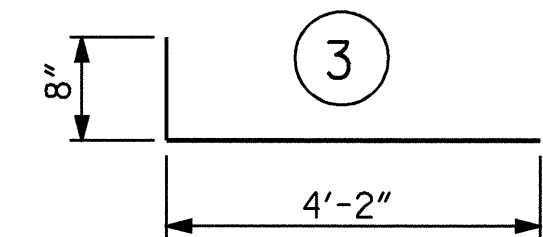
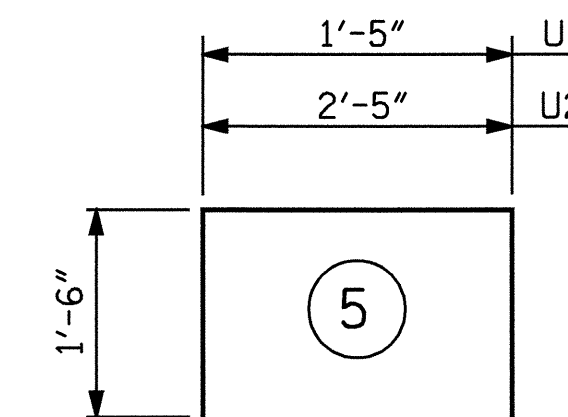
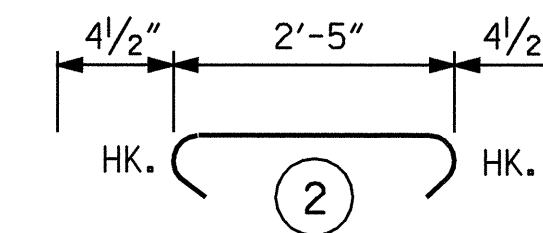
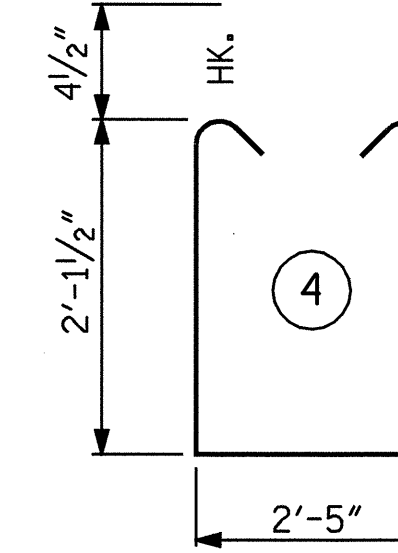
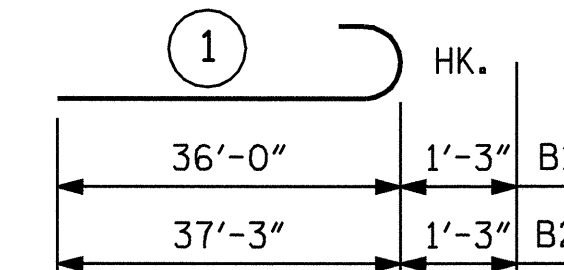
BAGGED STONE AND PIPE SHALL BE PLACED IMMEDIATELY AFTER COMPLETION OF END BENT EXCAVATION. PIPE MAY BE EITHER CONCRETE, CORRUGATED STEEL, CORRUGATED ALUMINUM ALLOY, OR CORRUGATED PLASTIC. PERFORATED PIPE WILL NOT BE ALLOWED.

BAGGED STONE SHALL REMAIN IN PLACE UNTIL THE ENGINEER DIRECTS THAT IT BE REMOVED. THE CONTRACTOR SHALL REMOVE AND DISPOSE OF SILT ACCUMULATIONS AT BAGGED STONE WHEN SO DIRECTED BY THE ENGINEER. BAGS SHALL BE REMOVED AND REPLACED WHENEVER THE ENGINEER DETERMINES THAT THEY HAVE DETERIORATED AND LOST THEIR EFFECTIVENESS.

NO SEPARATE PAYMENT WILL BE MADE FOR THIS WORK AND THE ENTIRE COST OF THIS WORK SHALL BE INCLUDED IN THE UNIT CONTRACT PRICE FOR THE SEVERAL PAY ITEMS.

### TEMPORARY DRAINAGE AT END BENT

### BAR TYPES



ALL BAR DIMENSIONS ARE OUT TO OUT.

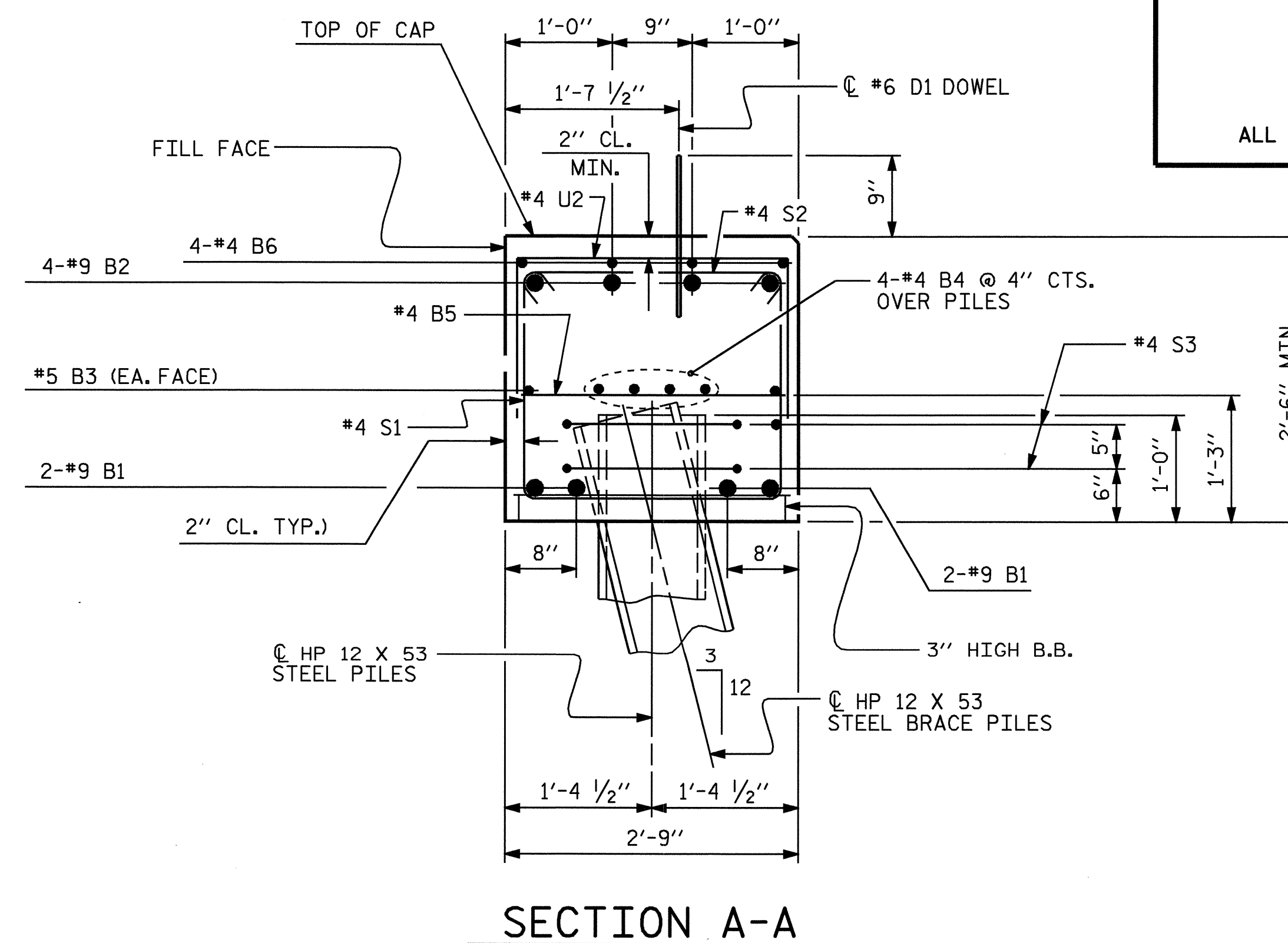
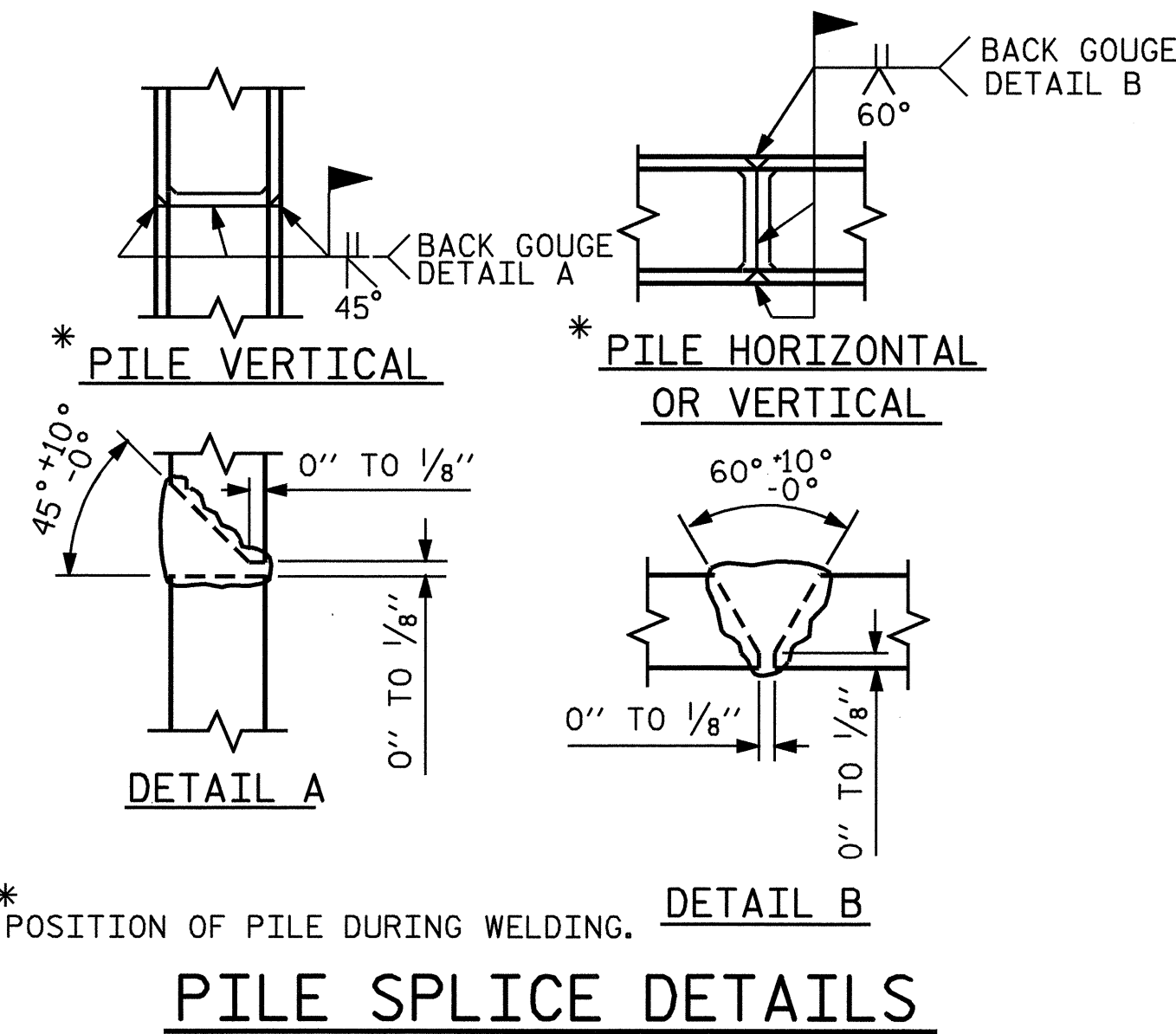
### BILL OF MATERIAL

#### END BENT 2

BAR NO.	NO.	SIZE	TYPE	LENGTH	WEIGHT
B1	8	9	1	37-3	1013
B2	8	9	1	38-6	1047
B3	4	5	STR	34-4	143
B4	12	4	STR	23-6	188
B5	17	4	STR	2-5	27
B6	4	4	STR	28-4	76
D1	40	6	STR	1-6	90
H1	28	4	3	4-10	90
K1	16	4	STR	3-11	42
S1	62	4	4	7-5	307
S2	62	4	2	3-2	131
S3	22	4	6	6-6	96
U1	4	4	5	4-5	12
U2	19	4	5	5-5	69
V1	40	4	STR	5-8	151
REINFORCING STEEL					3482 LBS.

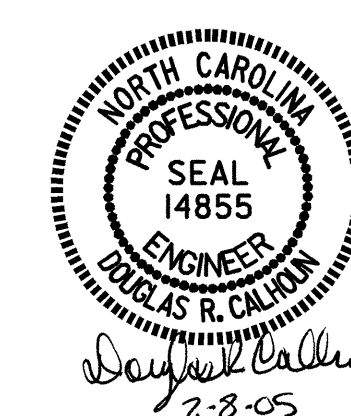
CLASS A CONCRETE	
POUR 1 CAP & LOWER PART OF WINGS	19.7 C.Y.
POUR 2 UPPER PART OF WINGS	2.0 C.Y.
POUR 3 LATERAL GUIDE	0.1 C.Y.
TOTAL	21.8 C.Y.

HP 12 x 53 STEEL PILES	
NO. 11	LIN. FT. 220



PROJECT NO. B-3450  
 DURHAM COUNTY  
 STATION: 14+31.00 -L-  
 SHEET 3 OF 3

STATE OF NORTH CAROLINA DEPARTMENT OF TRANSPORTATION RALEIGH					
SUBSTRUCTURE END BENT 2					
REVISIONS					SHEET NO.
NO.	BY:	DATE:	NO.	BY:	DATE:
1			3		
2			4		
TOTAL SHEETS					53



DRAWN BY: A.L.MEADOWS DATE: 7/10/02  
 CHECKED BY: T.A.HARRIS DATE: 9/27/02