

FOUNDATION NOTES:

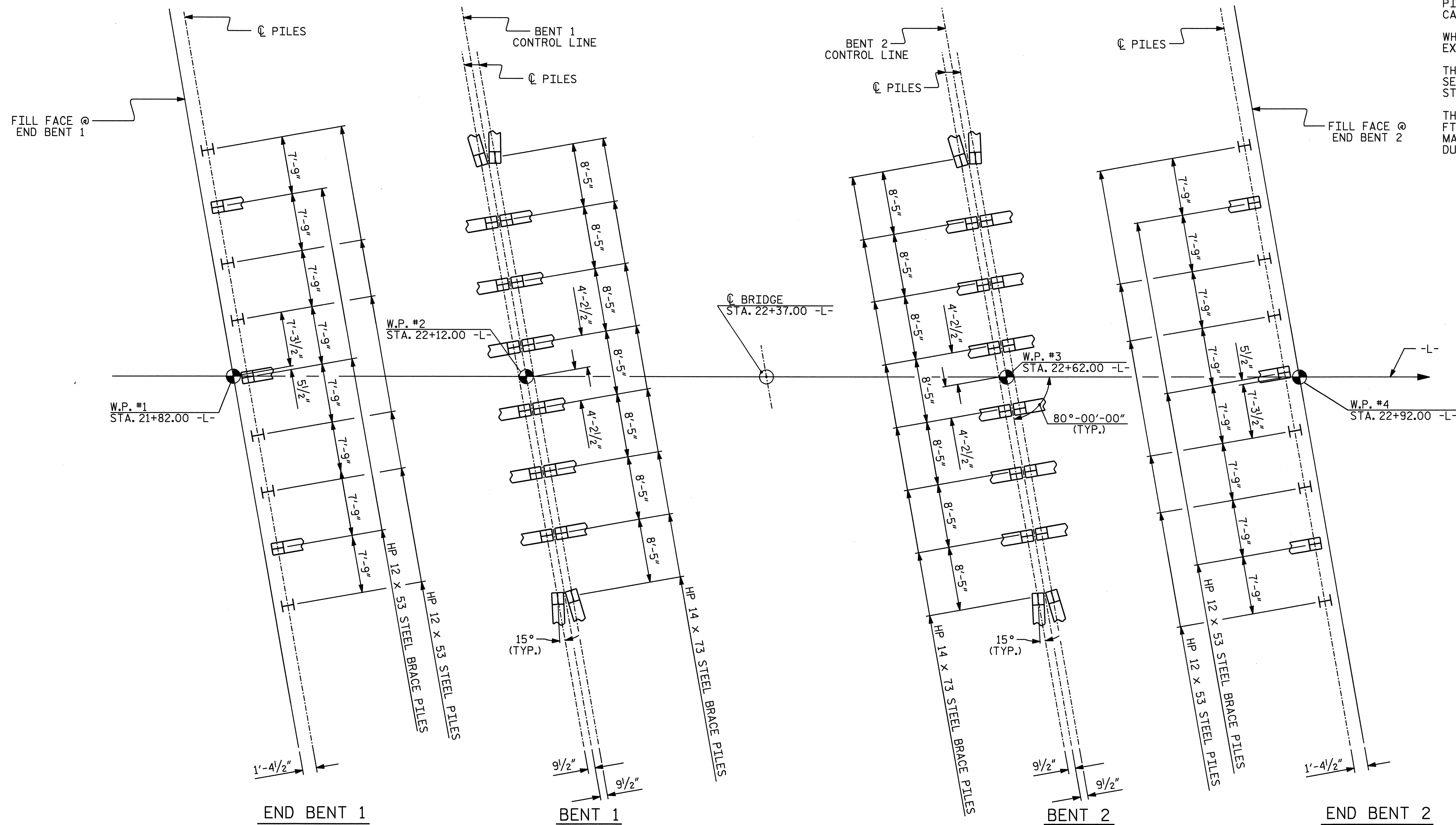
PILES AT END BENTS 1 & 2 SHALL BE DRIVEN TO A MINIMUM BEARING CAPACITY OF 50 TONS EACH.

PILES AT BENTS 1 & 2 SHALL BE DRIVEN TO A MINIMUM BEARING CAPACITY OF 50 TONS.

WHEN DRIVING PILES, THE MAXIMUM BLOW COUNT SHALL NOT BE EXCEEDED.

THE STEEL PILES SHALL BE GALVANIZED IN ACCORDANCE WITH SECTION 1076 OF THE STANDARD SPECIFICATIONS. FOR GALVANIZING STEEL PILES, SEE SPECIAL PROVISIONS.

THE SCOUR CRITICAL ELEVATION FOR BENT 1 & 2 IS ELEVATION 236.5 FT. THE SCOUR CRITICAL ELEVATIONS ARE FOR USE BY MAINTENANCE FORCES TO MONITOR POSSIBLE SCOUR PROBLEMS DURING THE LIFE OF THE STRUCTURE.



FOUNDATION LAYOUT

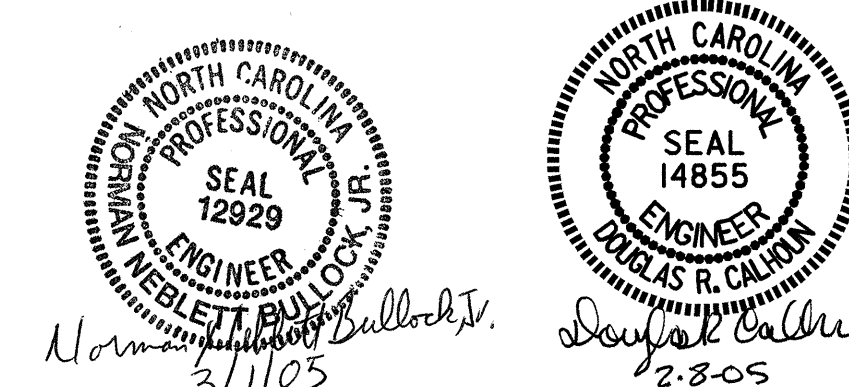
DIMENSIONS LOCATING PILES ARE SHOWN TO PILE CENTERLINE.
 PILES AT END BENTS 1 AND 2 ARE HP 12x53 STEEL PILES.
 ALL END BENT BRACE PILES ARE BATTERED 3:12.
 PILES AT BENTS 1 AND 2 ARE HP 14x73 STEEL PILES.
 ALL BENT PILES ARE BATTERED 1/2:12. PILES AT ENDS OF BENTS TO BE ROTATED AS SHOWN.

PROJECT NO. B-3450
 DURHAM COUNTY
 STATION: 22+37.00 -L-

SHEET 2 OF 3

STATE OF NORTH CAROLINA
 DEPARTMENT OF TRANSPORTATION
 RALEIGH

GENERAL DRAWING
 BRIDGE ON SR 1116 OVER
 SANDY CREEK BETWEEN
 SR 2220 AND US 15/501



DRAWN BY : A.L.MEADOWS DATE : 8/19/02
 CHECKED BY : T.A.HARRIS DATE : 2/9/04

08-FEB-2005 08:32
 W:\sq\do\B3450\Taharris\Microstation\STR. 2\B3450.sd_FL.02.dgn
 TAHarris

REVISIONS						SHEET NO.
NO.	BY:	DATE:	NO.	BY:	DATE:	S-27
1			3			TOTAL SHEETS
2			4			53