

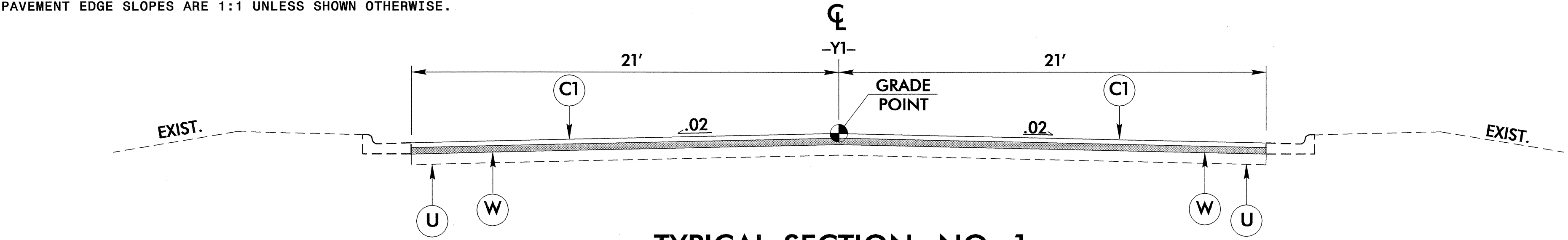
6/2/99

PROJECT REFERENCE NO. U-3302	SHEET NO. 2
ROADWAY DESIGN ENGINEER H. F. DUNCAN	PAVEMENT DESIGN ENGINEER CHI CHEUNG

### PAVEMENT SCHEDULE (FINAL PAVEMENT DESIGN)

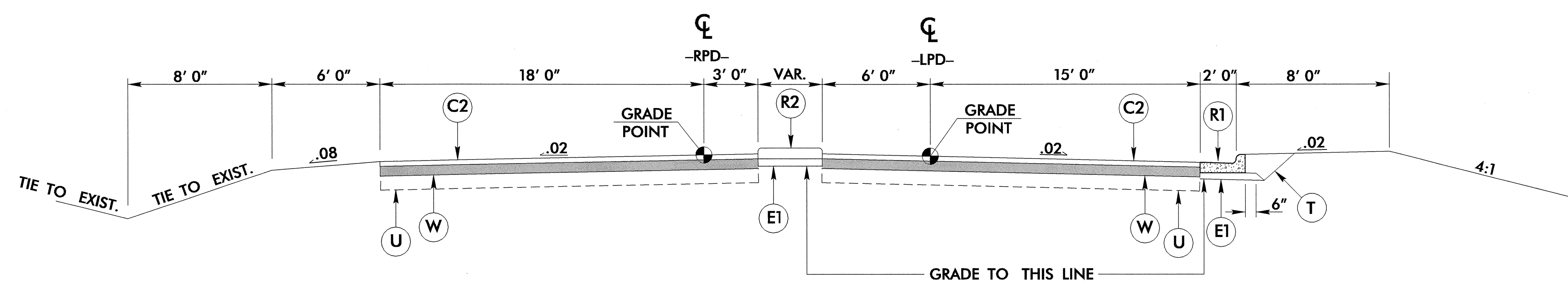
C1	PROP. APPROX. 1 1/2" ASPHALT CONCRETE SURFACE COURSE, TYPE S9.5B, AT AN AVERAGE RATE OF 168 LBS. PER SQ. YD.	E1	PROP. APPROX. 4" ASPHALT CONCRETE BASE COURSE, TYPE B25.0B, AT AN AVERAGE RATE OF 456 LBS. PER SQ. YD.	T	EARTH MATERIAL.
C2	PROP. APPROX. 3" ASPHALT CONCRETE SURFACE COURSE, TYPE S9.5B, AT AN AVERAGE RATE OF 168 LBS. PER SQ. YD. IN EACH OF TWO LAYERS.	E2	PROP. VAR. DEPTH ASPHALT CONCRETE BASE COURSE, TYPE B25.0B, AT AN AVERAGE RATE OF 114 LBS. PER SQ. YD. PER 1" DEPTH. TO BE PLACED IN LAYERS NOT LESS THAN 3" IN DEPTH OR GREATER THAN 5 1/2" IN DEPTH.	U	EXISTING PAVEMENT.
C3	PROP. VAR. DEPTH ASPHALT CONCRETE SURFACE COURSE, TYPE S9.5B, AT AN AVERAGE RATE OF 112 LBS. PER SQ. YD. PER 1" DEPTH. TO BE PLACED IN LAYERS NOT TO EXCEED 1 1/2" IN DEPTH.	R1	2' - 6" CONCRETE CURB AND GUTTER.	V	MILLING ASPHALT PAVEMENT 1 1/2" DEPTH.
D1	PROP. APPROX. 4" ASPHALT CONCRETE INTERMEDIATE COURSE, TYPE I19.0B, AT AN AVERAGE RATE OF 456 LBS. PER SQ. YD.	R2	5" MONOLITHIC CONCRETE ISLAND.	W	VARIABLE DEPTH ASPHALT PAVEMENT. (SEE WEDGING DETAIL)
D2	PROP. VAR. DEPTH ASPHALT CONCRETE INTERMEDIATE COURSE, TYPE I19.0B, AT AN AVERAGE RATE OF 114 LBS. PER SQ. YD. PER 1" DEPTH, TO BE PLACED IN LAYERS NOT LESS THAN 2 1/4" IN DEPTH OR GREATER THAN 4" IN DEPTH.	S1	4" CONCRETE SIDEWALK.		

NOTE: PAVEMENT EDGE SLOPES ARE 1:1 UNLESS SHOWN OTHERWISE.



**TYPICAL SECTION NO. 1**

TRANSITION FROM INSET NO. 2 TO TYPICAL SECTION NO. 1  
-Y1- STA 17+43.46 TO 19+13.25



**TYPICAL SECTION NO. 2**

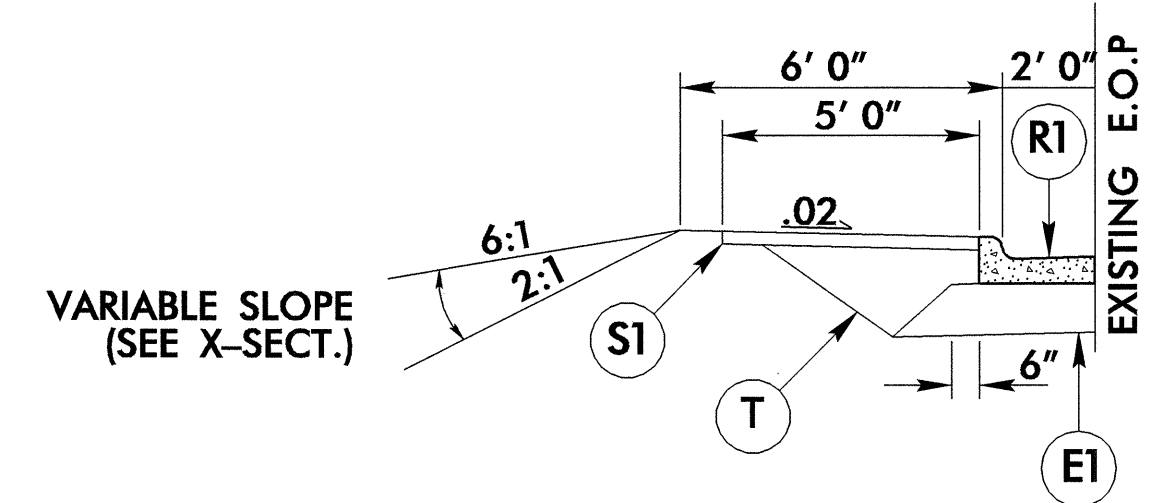
**TYPICAL SECTION NO. 1**

-Y1- STA 19+13.25 TO 21+19.34

**TYPICAL SECTION NO. 2**

-RPD- STA 8+23.27 TO 9+08.57

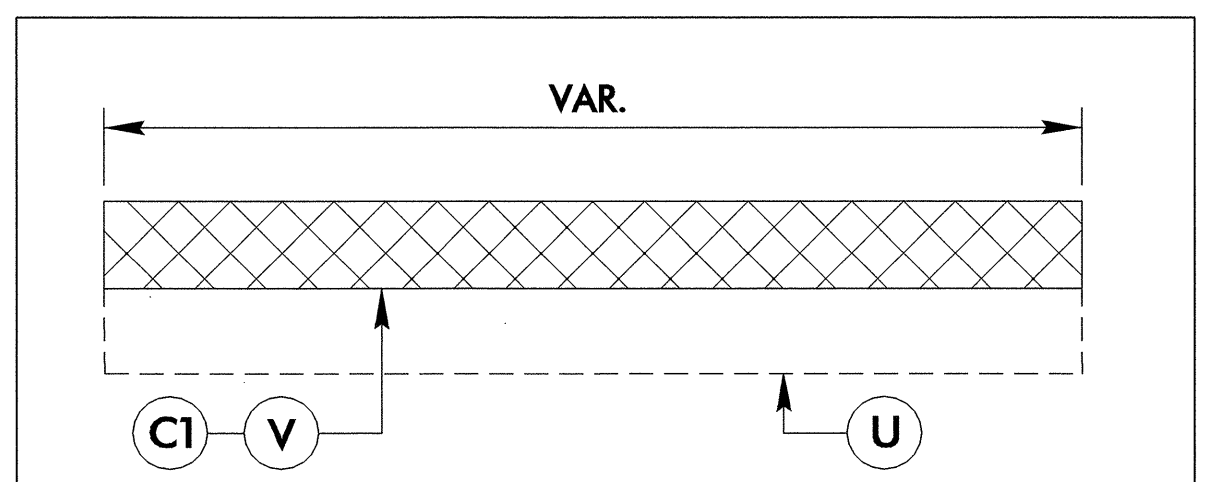
TRANSITION FROM TYPICAL SECTION NO. 2 TO TYPICAL SECTION NO. 3  
-RPD- STA 9+08.57 TO 10+08.57



**INSET NO. 1**

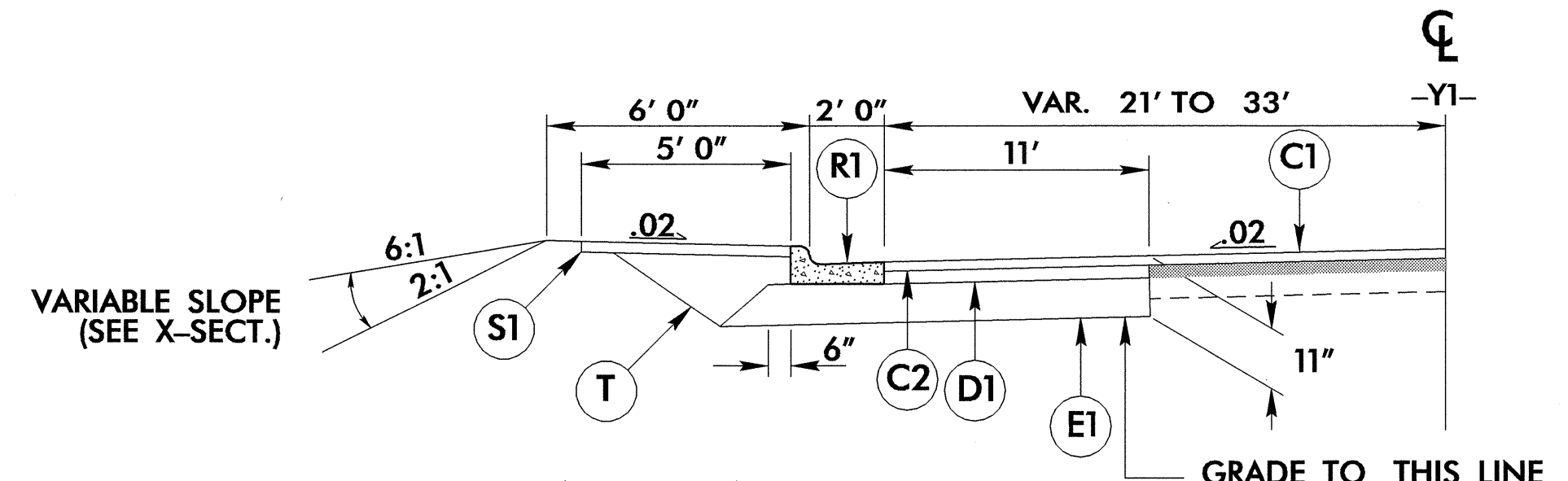
**INSET NO. 1**

-Y1- STA 16+17.01 TO 16+50.80



DETAIL SHOWING MILLING

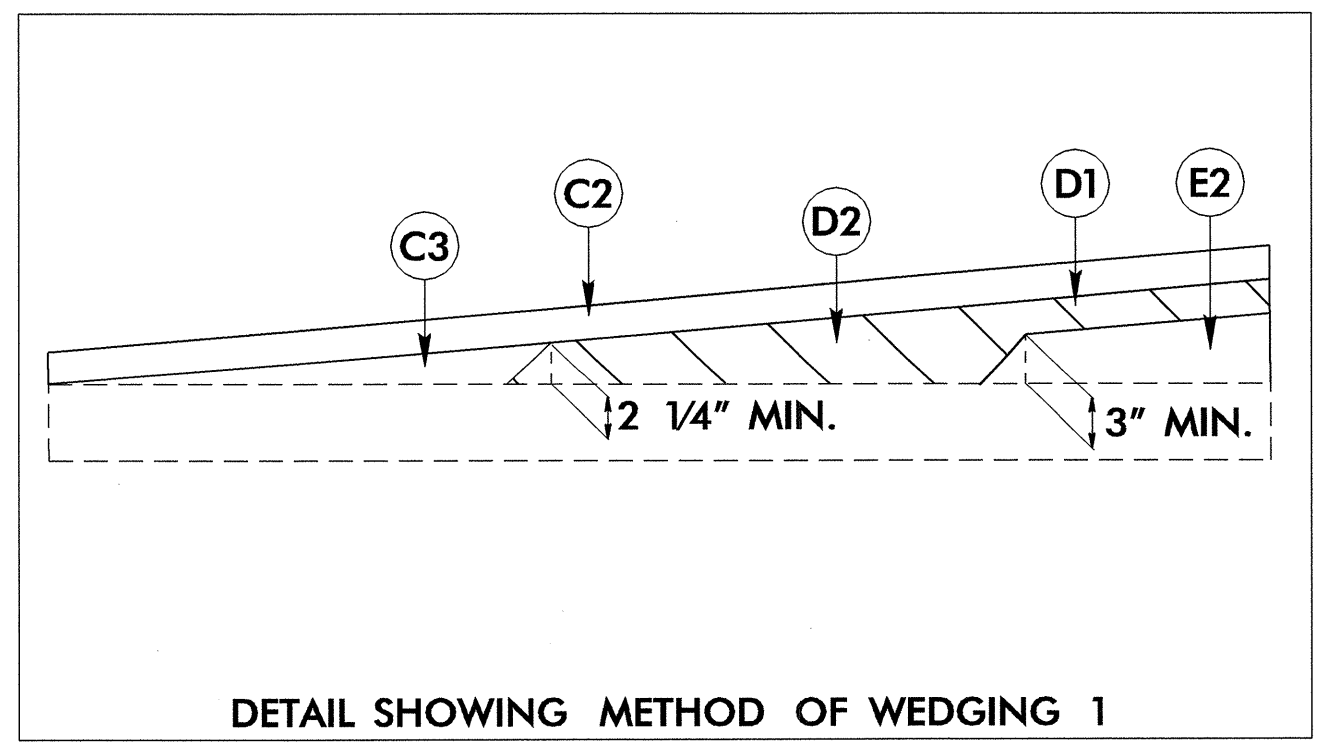
STATIONS	AVG. WIDTH
-Y1- 16+50.80 TO 18+60	55'
-Y1- 18+60 TO 21+19.34	42'



**INSET NO. 2**

**INSET NO. 2**

-Y1- STA 16+50.80 TO 17+43.46



DETAIL SHOWING METHOD OF WEDGING 1  
USE WITH TYPICAL SECTION NO. 1 & 2

25-JAN-2005 09:20  
ri:\proj\03302.tup  
NNHILL