

5/14/99  
 I:\SEP-2004\0027  
 W:\Special Details\ward\stds\02\stds to Special Details\english\422d10\0422d10.dgn  
 er-ward H:\DSC2280

**ENGLISH DETAIL DRAWING FOR REINFORCED BRIDGE APPROACH FILLS**

STATE OF NORTH CAROLINA DEPT. OF TRANSPORTATION DIVISION OF HIGHWAYS RALEIGH, N.C.

SHEET 3 OF 4  
**422D10**

**SECTION A-A**

**ENGLISH DETAIL DRAWING FOR REINFORCED BRIDGE APPROACH FILLS**

STATE OF NORTH CAROLINA DEPT. OF TRANSPORTATION DIVISION OF HIGHWAYS RALEIGH, N.C.

SHEET 3 OF 4  
**422D10**

**ENGLISH DETAIL DRAWING FOR REINFORCED BRIDGE APPROACH FILLS**

STATE OF NORTH CAROLINA DEPT. OF TRANSPORTATION DIVISION OF HIGHWAYS RALEIGH, N.C.

SHEET 4 OF 4  
**422D10**

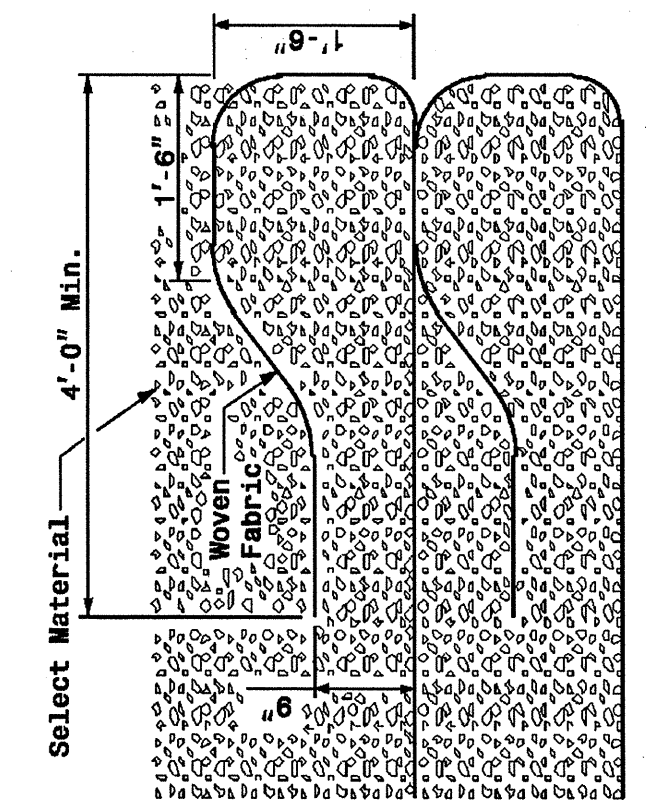
**SECTION B-B**

**SECTION C-C**

**ENGLISH DETAIL DRAWING FOR REINFORCED BRIDGE APPROACH FILLS**

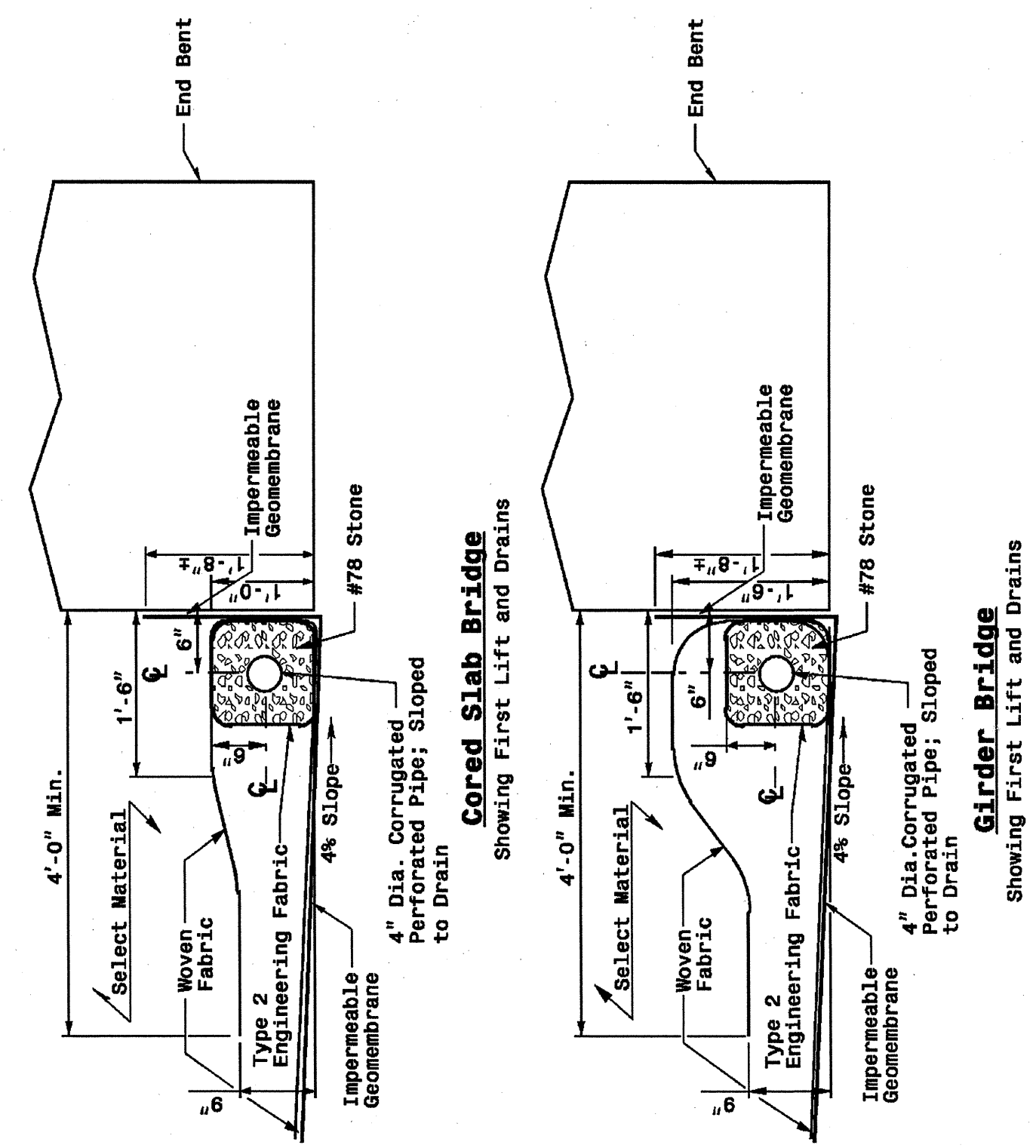
STATE OF NORTH CAROLINA DEPT. OF TRANSPORTATION DIVISION OF HIGHWAYS RALEIGH, N.C.

SHEET 4 OF 4  
**422D10**



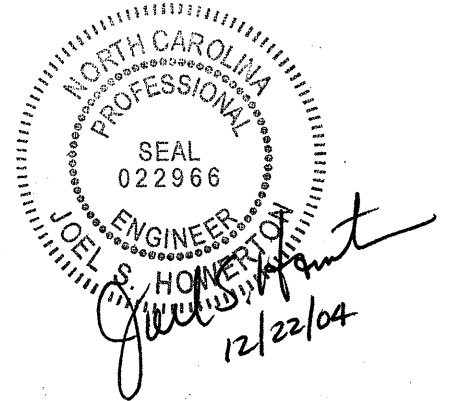
Height of Backwall	Number of Fabric Layers
4'-6" - 5'-9"	3
5'-10" - 7'-2"	4
7'-3" - 8'-8"	5
8'-9" - 10'-1"	6
10'-2" - 11'-8"	7

Note: Cored Slab Structures Require 2 Fabric Layers.



**Inset 'B'**

Length of Bridge End Bent Inside Wingwalls  
 If Bridge Skew is Less Than or Equal to 90°:  
 (Roadway Width + 7'-0") = Dis. Between Wingwalls  
 Sin (Bridge Skew Angle) = Dis. Between Wingwalls  
 If Bridge Skew is Greater Than 90°:  
 (Roadway Width + 7'-0") = Dis. Between Wingwalls  
 Cos (Bridge Skew Angle - 90°)



**DESIGN SERVICES UNIT  
STANDARDS AND SPECIAL DESIGN**  
Office 919-250-4128 FAX 919-250-4119

**SEE PLATE FOR TITLE**

ORIGINAL BY: 2002 STANDARDS DATE: 01-15-02  
 MODIFIED BY: E.E. WARD DATE: 09-15-04  
 CHECKED BY: DATE:  
 FILE SPEC.: stds/02stdstodetails/english/422d10.dgn